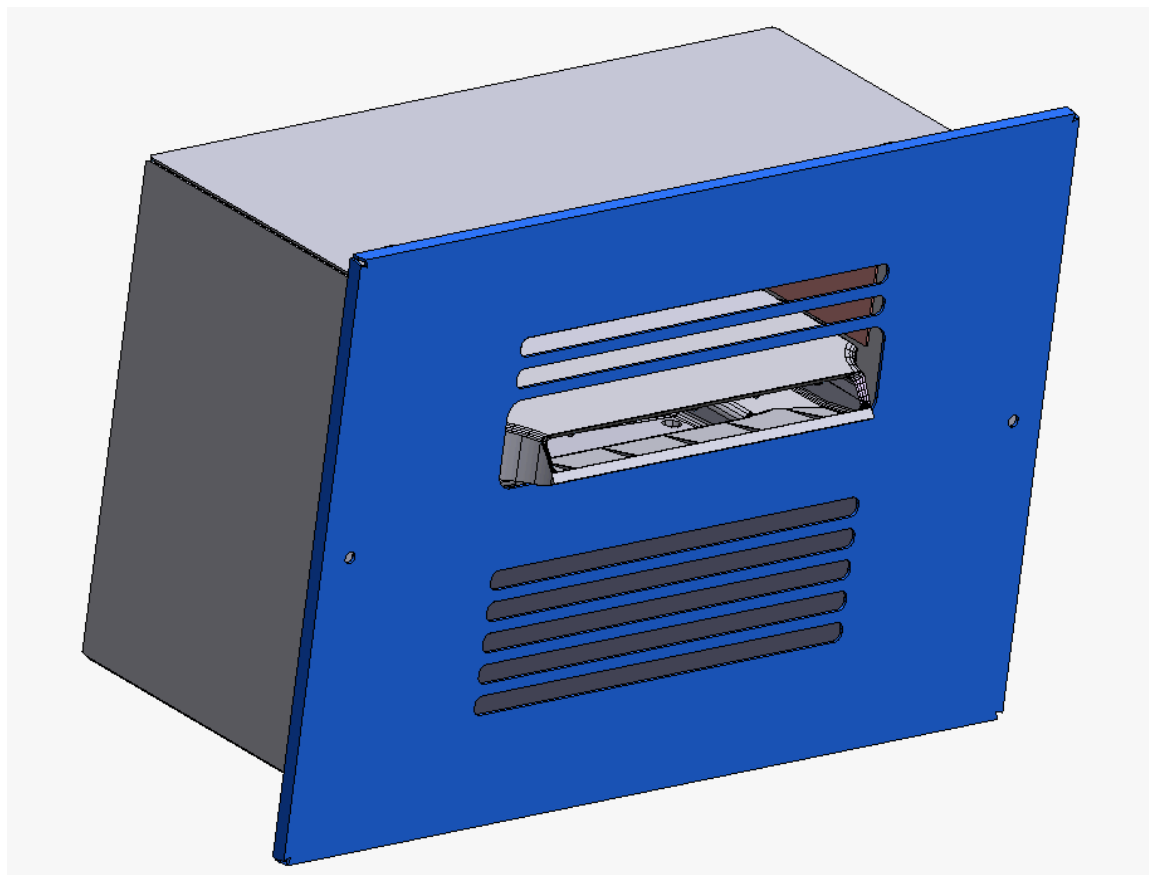


Elite Steam Remote Wall Blower



User manual

→ **LEGGI E CONSERVA
QUESTE ISTRUZIONI** ←
**READ AND SAVE
THESE INSTRUCTIONS**





We wish to save you time and money!

We can assure you that the thorough reading of this manual will guarantee correct installation and safe use of the product described

WARNINGS



BEFORE INSTALLING OR HANDLING THE REMOTE BLOWER PLEASE CAREFULLY READ AND FOLLOW THE INSTRUCTIONS AND SAFETY STANDARDS DESCRIBED IN THIS MANUAL AND ON THE LABELS ATTACHED TO THE REMOTE BLOWER.

CAUTION: ALWAYS DISCONNECT THE MAIN POWER TO THE HUMIDIFIER BEFORE OPENING OR SERVICING THE HUMIDIFIER OR REMOTE BLOWER!

IMPORTANT: BEFORE beginning installation:

- Check for shipping damage to cartons. Mark the shipping waybill accordingly.
- Open cartons and check for any hidden damage. Mark the shipping waybill accordingly.
- Check packing slip to ensure all items have been received. Notify General Filters of any shortages or damaged parts. **You must notify General Filters within 5 working days of any shortages.**

The conditions of the environment and the power supply voltage must comply with the specified values listed on the data label in the humidifier.

All other uses and modifications made to the humidifier that are not authorized by the manufacturer are considered incorrect, and the manufacturer assumes no liability for the consequences of any such unauthorized use.

Please note that the humidifier contains powered electrical devices and hot surfaces.

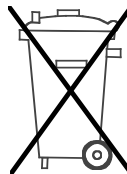
All service and/or maintenance operations must be performed by qualified personnel who are aware of the necessary precautions and are capable of performing the operations correctly.

Disconnect the humidifier from the main power supply before accessing any internal parts.

The humidifier must be installed in accordance with all local and national standards.

The humidifier is made of metallic and plastic parts. All parts must be disposed of according to the local and national standards for waste disposal.

WARNING: Your humidifier requires water to operate. Do NOT mount it above materials or machinery that could be damaged if a leak occurs. Carel assumes no responsibility for consequential or inconsequential damage as a result of any leaks.



Disposal of the parts of the humidifier: the humidifier is made up of metallic and plastic parts. All parts must be disposed of according to the local standards on waste disposal. Warranty on materials: 2 years (from the date of production, excluding the consumable parts).

CONTENTS

<u>1.</u>	<u>MODELS AVAILABLE</u>	1
<u>2.</u>	<u>OPERATION</u>	1
<u>3.</u>	<u>ACCESSORIES</u>	1
<u>3.1</u>	<u>Assembly accessories supplied</u>	1
<u>4.</u>	<u>LOCATING THE REMOTE BLOWER ASSEMBLY</u>	1
<u>4.1</u>	<u>Positioning</u>	1
<u>5.</u>	<u>WALL MOUNTING</u>	2
<u>5.1</u>	<u>Wall cutout</u>	2
<u>5.2</u>	<u>Housing</u>	3
<u>6.</u>	<u>ELECTRICAL CONNECTIONS</u>	5
<u>6.1</u>	<u>Power supply connections</u>	5
<u>7.</u>	<u>HOSE CONNECTIONS</u>	6
<u>7.1</u>	<u>Steam Hose Connection</u>	6
<u>7.2</u>	<u>Condensate Hose Connection</u>	6
<u>8.</u>	<u>GRILL INSTALLATION</u>	6
<u>9.</u>	<u>MAINTENANCE AND START UP</u>	6
<u>10.</u>	<u>TABLE OF SPARE PARTS</u>	7
<u>11.</u>	<u>TABLE OF TECHNICAL SPECIFICATIONS</u>	7
<u>12.</u>	<u>DIMENSIONS</u>	7

1. MODELS AVAILABLE

There are 2 models available

RMB35 - 230VAC 1~ for use with DS35

RMB15 - 110VAC 1~ for use with DS15

The product code RMB35 AND RMB15, designed and built to distribute steam into the room being treated, is suitable for use with DS35 and DS15 Elite Steam electrode humidifiers.

The ventilated distributors are powered at

RMB35 - 230VAC 1~ for use with DS35

RMB15 - 110VAC 1~ for use with DS15

The ventilated steam distributor may be installed in the wall only distributing steam horizontal to the floor.

2. OPERATION

The fan in the RMB35 AND RMB15 starts operating when the humidifier receives a call for steam. The fan will stop operation when there is no longer a demand for humidification. The grill is designed to distribute steam outward and slightly down to avoid condensing on the ceiling. A cleanable filter is located behind the grill to eliminate any large particles from coming in contact with the internal components of the unit. An inline fuse is used for safety and is located in the RMB housing power wire. If the blower does not operate check the fuse.

3. ACCESSORIES

3.1 Assembly accessories supplied

The following table lists the assembly accessories supplied in the packaging for distributor and humidifier installation:

<i>n.</i>	<i>description</i>
1	<i>12' Steam Hose</i>
2	<i>14' Condensate Hose</i>
3	<i>1 strain relief for power wire to remote blower</i>
4	<i>2 large hose clamps for steam hose and 1 small hose clamp for condensate hose</i>
5	<i>Screw for the ground terminal in remote blower</i>
6	<i>White grill and 2 screws</i>
7	<i>Grill Filter with velcro</i>
8	<i>E2 humidistat</i>
9	<i>Water fill connection for DS unit</i>
10	<i>Saddle valve water supply kit for DS unit</i>
11	<i>Water supply tubing for DS unit</i>
12	

Table. 3.1.1

4. LOCATING THE REMOTE BLOWER ASSEMBLY

4.1 Positioning

The steam distributor may be positioned in the wall (Fig. 4.1.2) and connected to the humidifier by a steam hose supplied (see Table. 3.1.2).

The following rules should be regarded:

- the path of the steam pipe must exploit gravity to drain the condensed steam back to the humidifier or the distributor; pockets or traps must also be avoided, as the condensate may accumulate there, and the pipe must not be choked due to sharp bends or twisting;*

- b) the length of the steam pipe from the humidifier to the distributor must be less than 12 feet;
- c) Figs. 4.1.1 and 4.1.2 indicate the minimum recommended distances to prevent the humidified air flow from coming into direct contact with people, electrical equipment, false ceilings and cold surfaces before the steam has been completely absorbed by the environment.

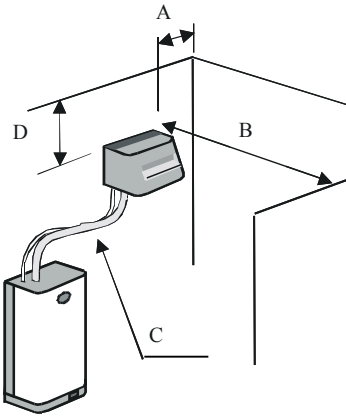


Fig. 4.1.1

dimensions	
A	>18"
B	>5'
C	≤12'
D	>12"

Fig. 4.1.2

5. WALL MOUNTING

5.1 Wall opening

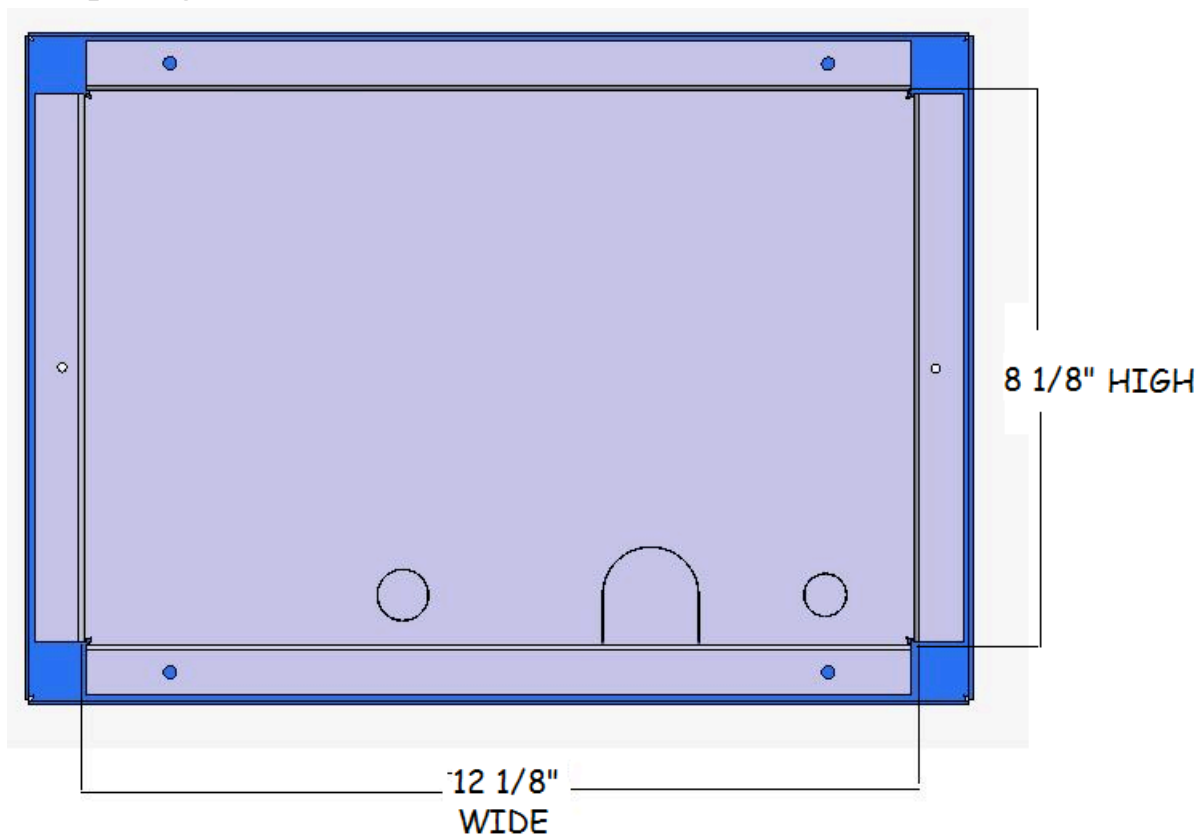


Fig. 5.1.1 Wall opening (distances in INCHES).

The housing will fit in a standard 2x6 wall with " drywall. If installing in a 2x4 wall with " drywall then both the front and back sections of the drywall must be removed and the housing will protrude out the back of the wall.

5.2 Housing

5.2.1 Determine if the steam will be entering the housing from the back or bottom. Remove the knockouts for the steam hose, condensate hose and electrical strain relief for the desired installation (Fig 5.2.1 and Fig 5.2.2).

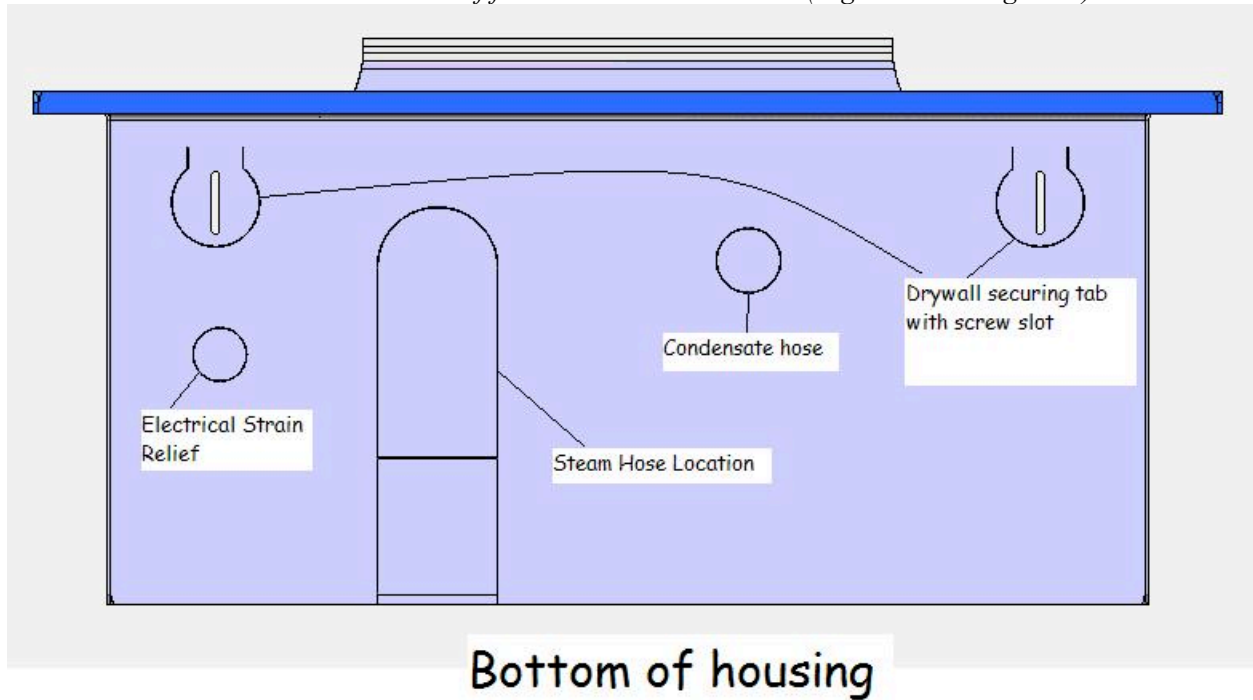


Fig. 5.2.1

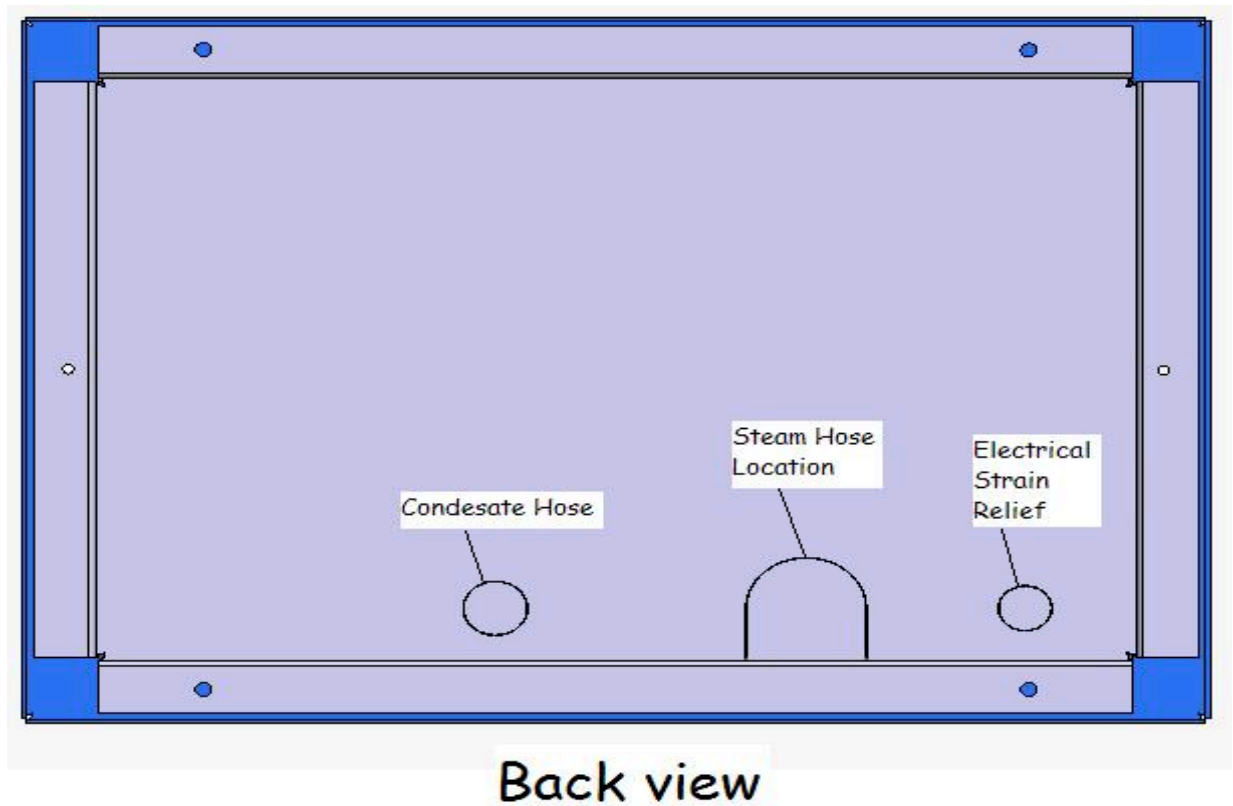


Fig. 5.2.2

5.2.2 Install the provided electrical strain relief to the housing with the wire tightening screws located inside the housing (Fig 5.2.1 and Fig 5.2.2).

5.2.2 Insert RMB housing into the wall and bend the 4 fastening tabs (Fig. 5.2.3) around the back of the drywall.

5.2.3 Secure the housing to the wall using predrilled holes located in front of drywall tabs. The screw should penetrate the wall and pass through the slot in the securing tab behind the drywall (Fig. 5.2.3).

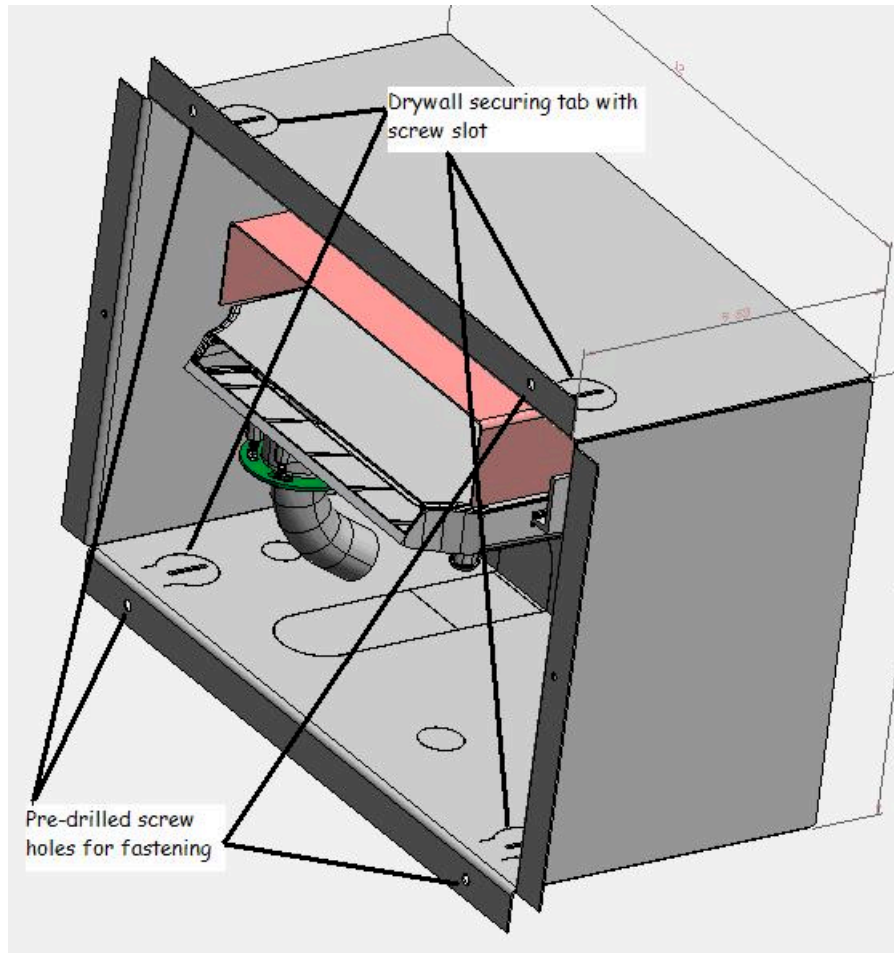


Fig 5.2.3

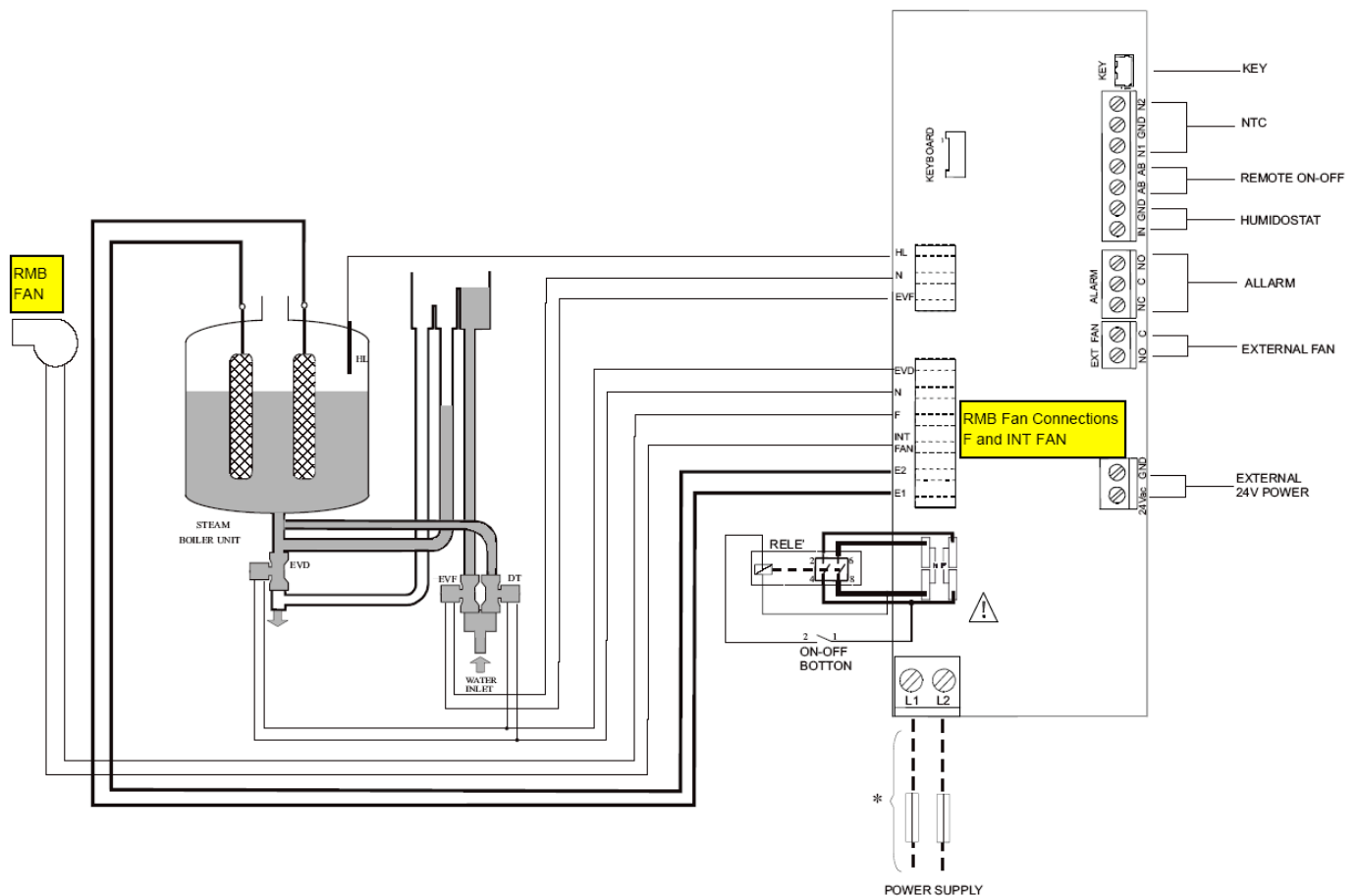
6. ELECTRICAL CONNECTIONS

The electrical connections must be performed by expert and qualified personnel, who are capable of completing the work correctly and in compliance with the standards in force in the place of installation.

6.1 Power supply connections

The fan is fitted with a power supply terminal block with 2 terminals and a screw terminal located on the RMB housing for connecting the ground wire. The power wire should be 16 gauge or larger shielded cable with ground. Power wiring should be run through the strain relief that was installed in step 5.2.2.

The power supply will come from terminals F and INT FAN located on the back side of the humidifier board. The power wire must enter the humidifier on the bottom or back and then be secured with electrical strain relief bridge provided in the humidifier. Faston connectors are provided for the power wire connection to the board. Please note the 2 spade connection leads on the humidifier control board have factory protective caps that must be removed. The Steam cylinder can be removed for better access to the electrical collections located on the back of the control board.



7. HOSE CONNECTIONS

7.1 Steam Hose Connection

Steam hose should be connected to the stainless fitting located at the bottom of the manifold. Stainless fitting should be inserted into hose and a hose clamp is to be used to secure the steam hose to the fitting. (Fig 7.1.1)

Please refer to the DS manual for steam hose connections on the humidifier and proper steam hose piping.

7.2 Condensate Hose Connection

Condensate hose should be connected to the molded barbed fitting located on the bottom right of the manifold. The molded fitting should be inserted into hose and a hose clamp is to be used to secure the condensate hose to the fitting. The condensate hose needs to be trapped immediately under the blower housing or directly above the steam humidifier. (Fig 7.1.1)

Please refer to the DS manual for condensate hose connection on the humidifier and proper condensate hose piping.

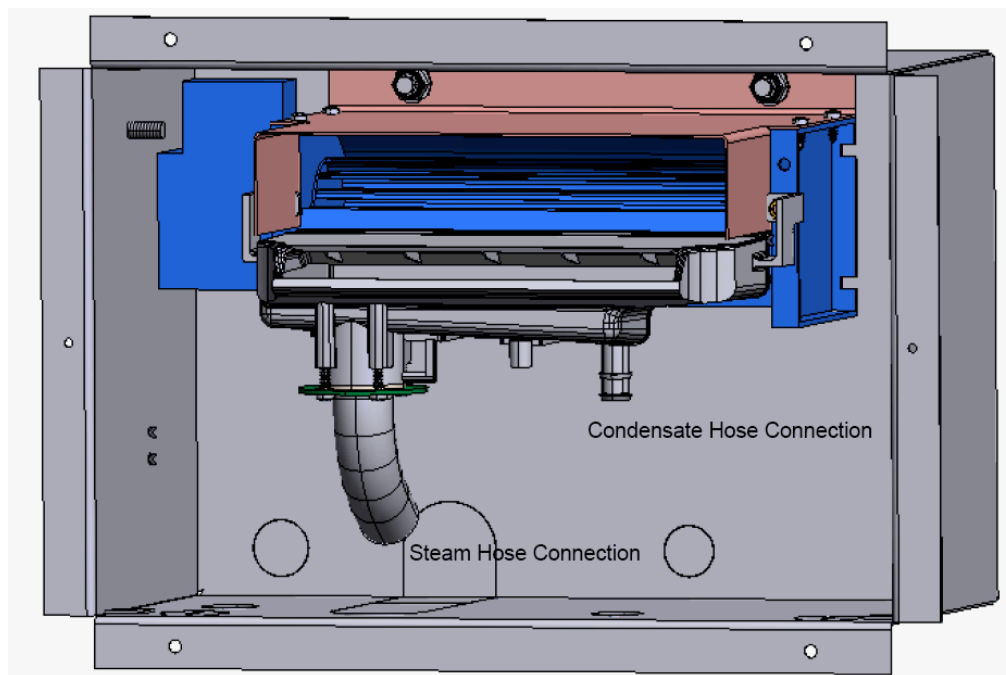


Fig 7.1.1

8. GRILL INSTALLATION

Attach the air filter to the grill, install the grill over the housing face and use the provide screws and pre-drilled holes to secure the grill to the housing. The steam manifold will extend out past the face of the grill.

9. MAINTENANCE AND START UP

The first time the appliance is started and when maintenance is performed, the operation of the following devices must be understood:

- A. Air filter. The cleanliness of the air filter is essential for ensuring a constant flow of air to the distributor. Neglecting the maintenance of the filter (cleaning and/or replacement) will seriously affect the operation of the steam distributor. Maintenance is the responsibility of the user: it must be performed at least once a year, and, in any case, according to the amount of dust in the air.*
- B. An inline fuse is used in the remote blower housing and if the fan does not operate check for a failed fuse.*

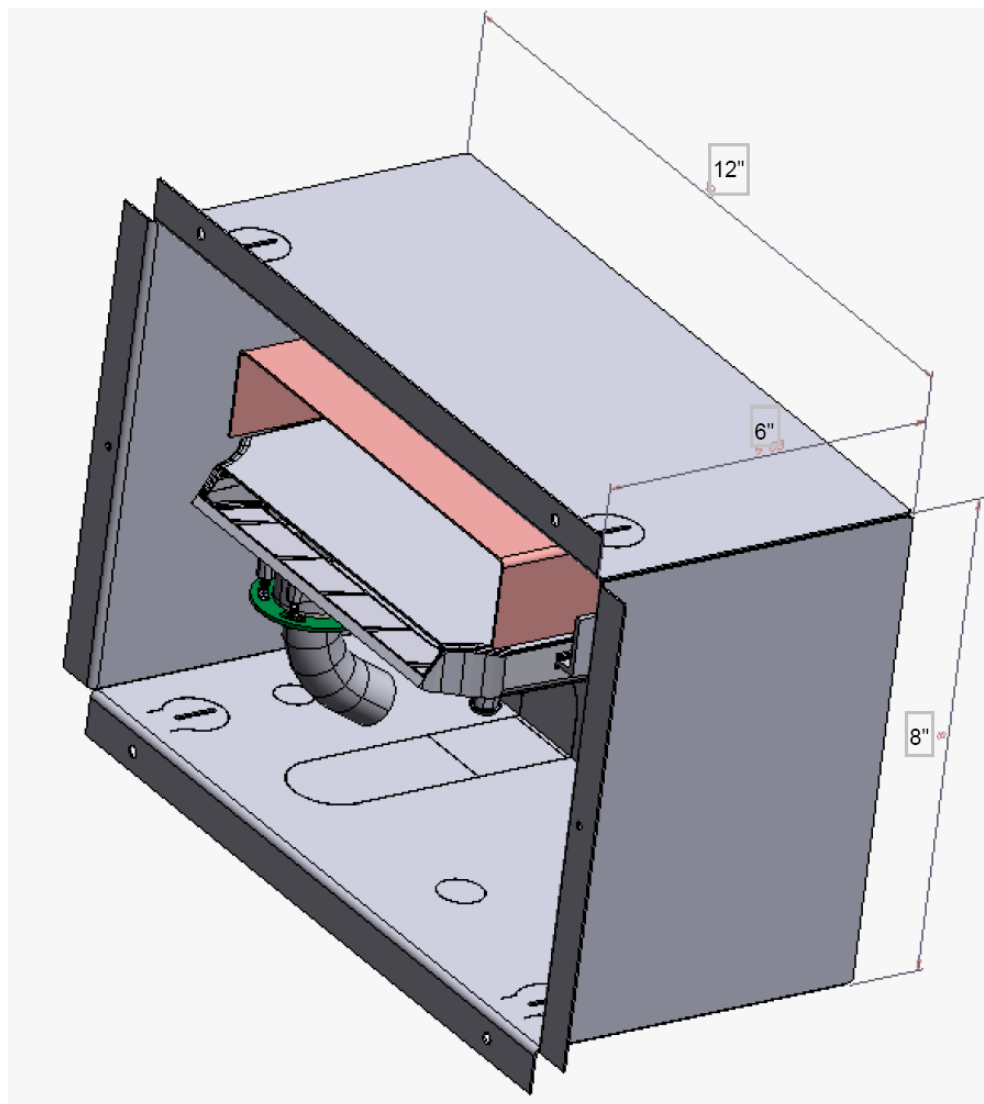
10. TABLE OF SPARE PARTS

<i>spare part</i>	<i>code</i>
<i>Fan 220 VAC 1~ (35-2)</i>	7535
<i>Fan 110 VAC 1~ (15-2)</i>	7534
<i>Air filter</i>	
<i>Steam manifold (35-20)</i>	7536
<i>In Line Fuse</i>	<i>AMP</i>

11. TABLE OF TECHNICAL SPECIFICATIONS

<i>description</i>	<i>value or range</i>
<i>steam output (lb/hr)</i>	0-12
<i>internal fuse</i>	<i>AMP</i>
<i>storage temperature (°C)</i>	-10 to 70
<i>rated power (W)</i>	24
<i>rated air flow-rate (cfm)</i>	71
<i>noise level (open field, at maximum speed, one metre from the front panel) (dB)</i>	30

12. DIMENSIONS



This image shows a full page of blank white paper with horizontal ruling lines. The lines are evenly spaced and run across the width of the page, providing a template for writing or drawing. There are no margins, text, or other markings present.



General Filters, Inc..
43800 Grand River Novi, MI 43875 USA
Tel. 248-476-5100 Fax 248-349-2366
<http://www.GeneralAire.com> - e-mail:
Sales@GeneralFilters.com

Agency: