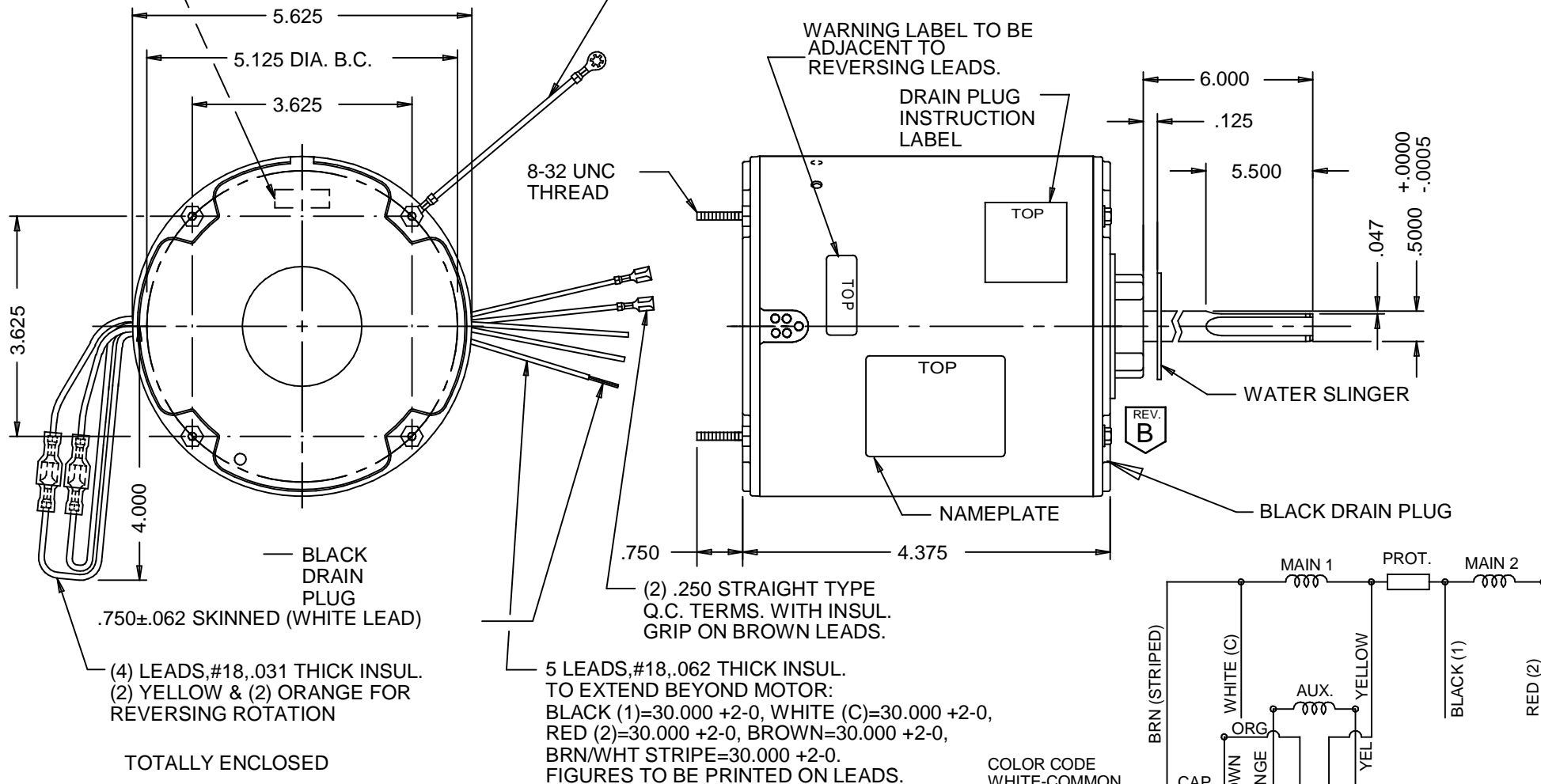


AUTOMATIC  
THERMAL  
PROTECTOR

#16 GRN/YEL GROUND LEAD  
TO BE 12.000±.250 BETWEEN  
CENTERS OF TERMS.  
TERM. TO FIT #10 SCREW

ROTATION IS C.C.W. VIEWING LEAD END  
WITH ORG TO ORG & YEL TO YEL TO  
REVERSE INTERCHANGE ORG & YEL LEADS.



© EMERSON ELECTRIC CO. 5/14/2009

CAT. NO.	BEARING	CAPACITOR
8673	SELF-ALIGNING SLEEVE	5.0 MFD 370V

MODEL	REF.	CUSTOMER	HP.	VOLTS	AMPS	HZ.	R.P.M.	ROTATION	CUST. PT. NO.
K55HXTCD-8221		STANDARD	1/6	208-230	1.0	60	825/2 SPD	CCW LD. END REV.	

SHEET NUMBER	REV	REVISION RECORD FOR:	ECO 240131
1 OF 1	B	DELETED STUD	
REVISION DATE			
14-MAY-09			

INFORMATION DISCLOSED ON THIS DOCUMENT  
IS CONSIDERED PROPRIETARY AND SHALL NOT  
BE REPRODUCED OR DISCLOSED WITHOUT WRIT-  
TEN CONSENT OF EMERSON ELECTRIC COMPANY.



ALL DIMENSIONS ARE FOR REFERENCE ONLY UNLESS TOLERANCE IS GIVEN.

ISSUED BY	REVIEWED BY	ENGINEER APPROVED	TITLE	CODE	ITEM NO.	SIZE
J. CORONADO	B. GAITAN	T. BOURQUIN	ASSEMBLED VIEW	V01	338898	A