

Outdoor Vent Cap

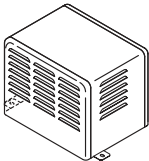
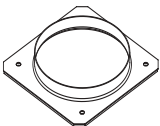
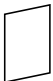
VC-100C, VC4C



Installation Instructions

Note: This vent cap is approved for use on outdoor installations only.

1. Included Accessories

Part	Shape	Q'ty	Part	Shape	Q'ty
Vent Cap		1	Vent Adapter		1
			Installation Instructions (this document)		1

2. Installation of Vent Cap

Step 1: Locate and Remove Mounting Screws and the Exhaust Adapter

The screws and the Exhaust Adapter are located on the top of the heater as shown in figure 1a. Remove the 6 screws and the Exhaust Adapter. (Discard the Exhaust Adapter only. The 6 screws will be used in steps 2 and 3.)

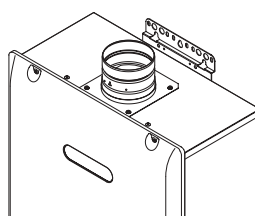


Figure 1a: Location of mounting screws and the Exhaust Adapter.

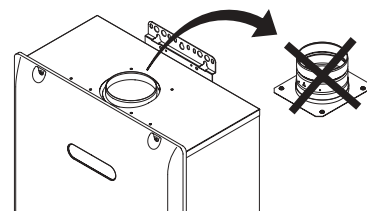


Figure 1b: Remove the screws and the Exhaust Adapter.

Step 2: Install and Secure the Vent Adapter

Secure the Vent Adapter to the heater using the 4 screws removed in step 1 as shown in figure 2.

Note: The Vent Adapter must be installed in the proper direction (ridge up) as shown in figure 2.

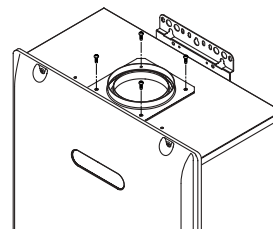


Figure 2: Vent Adapter installed.

Step 3: Install the Vent Cap

Locate the pipe on the bottom of the Vent Cap. Fit the Vent Cap to the flue of the heater (with the louvers facing forward) as shown in figures 3a and 3b. The cap will rest on the top of the heater.

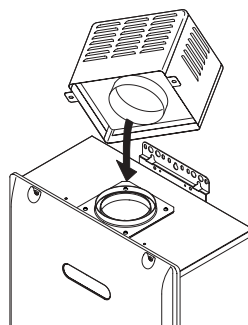


Figure 3a: Fit the Vent Cap to the flue of the heater.

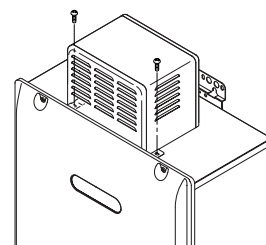


Figure 3b: Vent Cap installed.

Step 4: Secure the Vent Cap

Secure the Vent Cap to the heater using the 2 remaining screws removed in step 1.

