

HEAT CONTROLLER, INC.

INSTALLATION MANUAL

Field Installed Electric Heat Accessory for HAGV Air Handler

GENERAL

This instruction covers the physical installation of the following electric heat kits:

(Refer to applicable air handler instructions for electrical specifications)

TABLE 1. MODELS COVERED

Breaker Models				
7800-305C	7800-305D	7800-305E	208/240/1/50/60	
7800-310C	7800-310D	7800-310E	208/240/1/50/60	
—	7800-315D	7800-315E	208/240/1/50/60	
—	—	7800-320E	208/240/1/50/60	

The electric heat accessories are used for applications of cooling with electric heat and heat pump with electric heat. Each of the air handler unit models are approved for use with specific electric heat accessories. The installation instructions list the possible combinations and other important electrical data and limitations.

LINE POWER CONNECTIONS

Power may be brought into the unit through the knockout located at the top left of the cabinet.

Use the hole appropriate to the unit's orientation in each installation to bring conduit from disconnect. The power lead conduit should be terminated at the electrical control box.

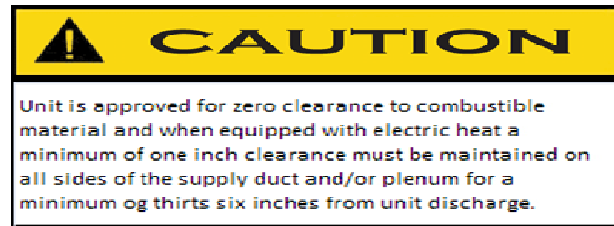
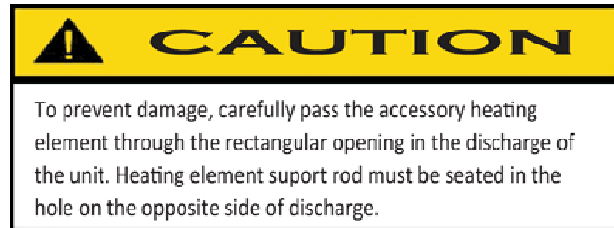
LOW VOLTAGE CONNECTIONS

The 24 volt power supply is provided by an internally wired low voltage transformer which is standard on all models. Low voltage wiring may exit the unit on the top right side of the cabinet.

Note: Wiring diagrams in this instruction are included as an example, consult factory for complete wiring diagrams on all units.

INSTALLATION

1. Turn power off to unit.
2. Remove blower access door and control panel cover.
3. Remove blankoff plate and discard. Retain screws.
4. For circuit breaker models, remove wiring from terminal block.
5. Insert electric heat kit into opening on discharge of unit. Secure with screws removed from blank off plate.
6. Connect wiring to proper terminals on circuit breaker.
See wiring diagram.
Connect male plug adapter supplied with electric heater kit to female plug adapter supplied with unit.
8. Review all wiring with wiring diagram supplied with electric heater kit.
9. Replace wiring diagram on control panel with wiring adhesive backed wiring diagram supplied with electric heater kit.
10. Replace blower door.



ELECTRICAL DATA																					
Model	Motor Data				Electric Heater Data								Minimum Circuit Ampacity / Maximum Overcurrent Protection								
	Motor HP	Volts 1 Ph	Motor Type	Motor Amps (1)	No Circuits	Kw (2)	Amps 208V	Amps 208V	Amps 240V	Amps 240V	MCA 208V	MCA 208V	MCA 240V	MCA 240V	MOCP 208V	MOCP 208V	MOCP 240V	MOCP 240V			
							Cr 1	Cr 2	Cr 1	Cr 2	Cr 1	Cr 2	Cr 1	Cr 2	Cr 1	Cr 2	(3,4) Cr 1	(3,4) Cr 2	(3,4) Cr 1	(3,4) Cr 2	
HAGV24 HAGV36	0.50	208/240	ECM	4.3	0	0	0	0	0	0	5.4	0	5.4	0	10	0	10	0			
					1	5	18.0	0	20.8	0	26.8	0	30.3	0	35	0	40	0			
					1	10	36.1	0	41.7	0	49.4	0	56.4	0	60	0	70	0			
					2	15	18.0	36.1	20.8	41.7	26.8	49.4	30.3	56.4	35	50	40	70			
HAGV48 HAGV60	0.75	208/240	ECM	6.8	0	0	0	0	0	0	8.5	0	8.5	0	15	0	15	0			
					1	5	18.0	0	20.8	0	29.3	0	32.8	0	35	0	40	0			
					1	10	36.1	0	41.7	0	51.9	0	58.9	0	60	0	70	0			
					2	15	18.0	36.1	20.8	41.7	29.3	51.9	32.8	58.9	35	60	40	70			
					2	20	36.1	36.1	41.7	41.7	51.9	51.9	58.9	58.9	60	60	70	70			

(1) Motor Nameplate Amps

(2) Nominal Kw At 240V (Derate 25% For 208V)

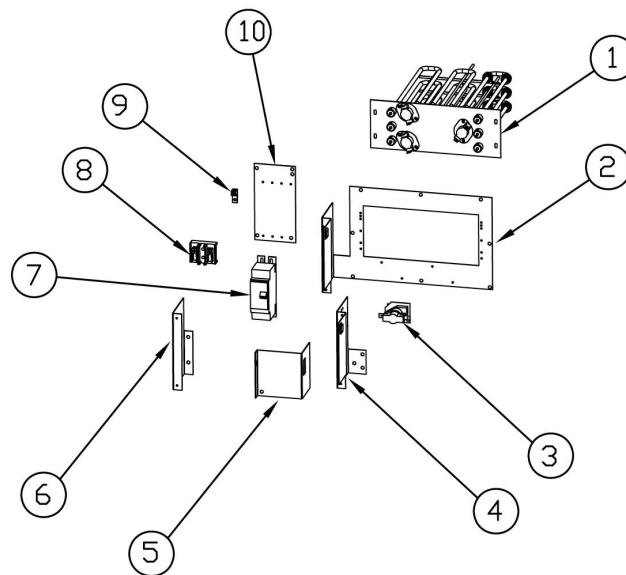
(3) Fuse or HACR Breaker

(4) Maximum Overcurrent Device, Overcurrent Protection Installed On Breaker Models Are Sized Per MCA

Heat Kit Model	Circuit Breaker	Seq.	Limits	ELEMENT
7800-305C	1 (35 amp)	1	1	5 KW
7800-310C	1 (60 amp)	1	2	10 KW

Heat Kit Model	Circuit Breaker	Seq.	Limits	ELEMENT
7800-305D	1 (35 amp)	1	1	5 KW
7800-310D	1 (60 amp)	1	2	10 KW
7800-315D	1 (40 amp & 1 (60 amp)	2	3	15 KW

Heat Kit Model	Circuit Breaker	Seq.	Limits	ELEMENT
7800-305E	1 (35 amp)	1	1	5 KW
7800-310E	1 (60 amp)	1	2	10 KW
7800-315E	1 (40 amp & 1 (60 amp)	2	3	15 KW
7800-320E	2 (60 amp)	2	4	20 KW

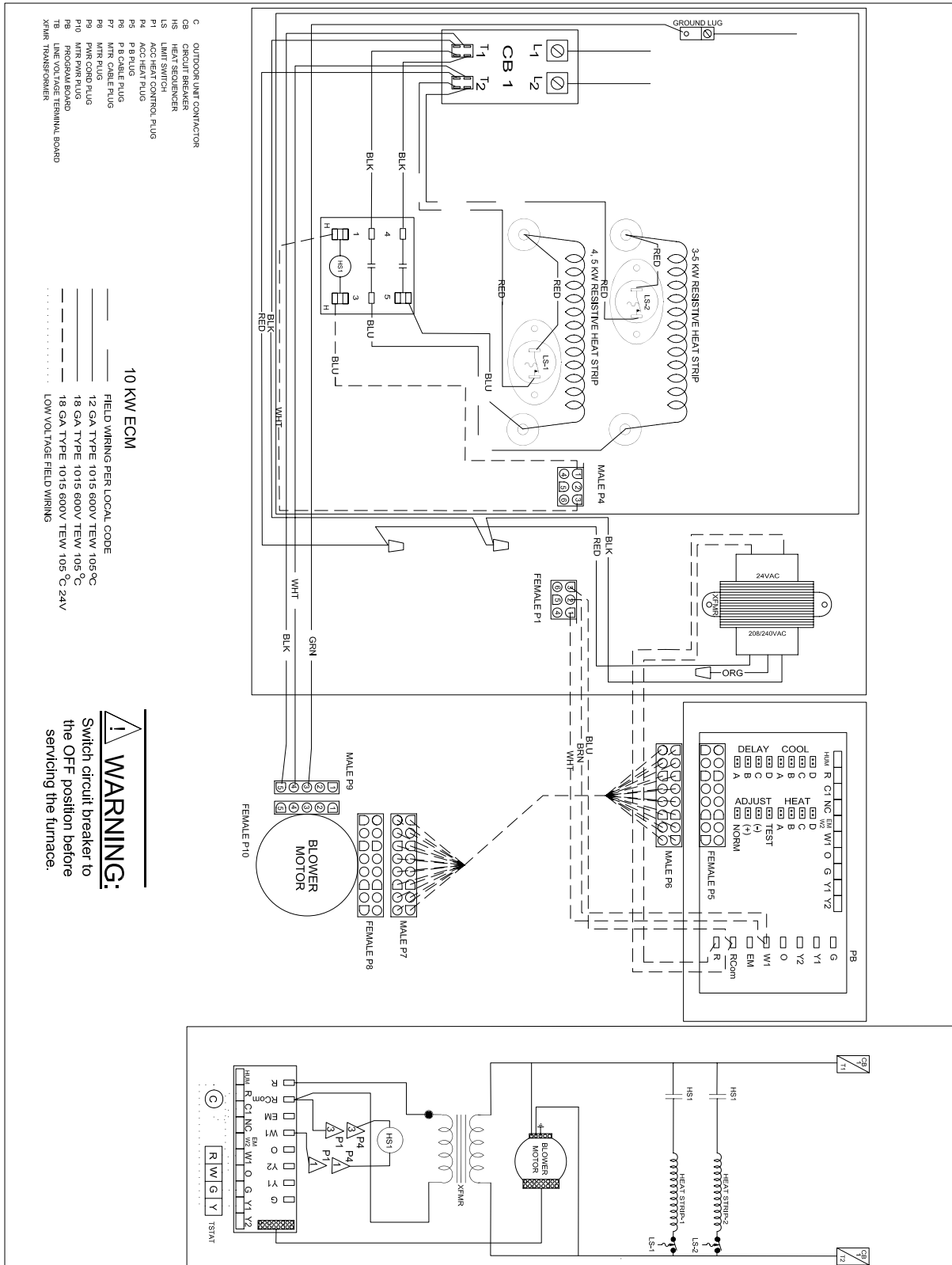


COMPONENT LIST

- 1 HEATING ELEMENT
- 2 HEAT DECK COVER
- 3 HEAT SEQUENCER
- 4 CIRCUIT BREAKER MOUNTING PLATE "A" (B MODELS)
- 5 BREAKER WIRE COVER (B MODELS)
- 6 CIRCUIT BREAKER MOUNTING PLATE "B" (B MODELS)
- 7 CIRCUIT BREAKER (B MODELS)
- 8 TERMINAL BLOCK (S MODELS)
- 9 GROUND LUG
- 10 CIRCUIT BREAKER MOUNTING PLATE (B MODELS)

FIELD INSTALLED ELECTRIC HEATER FOR HAGV AIR HANDLERS

Note: Wiring diagrams in this instruction are included as an example, consult factory for complete wiring diagrams on all units.



Design, material, performance data and components
subject to change without notice.

HEAT CONTROLLER, INC.

1900 Wellworth Ave., Jackson, MI 49203 ♦ Ph. 517-787-2100 ♦ Fax 517-787-9341

THE QUALITY LEADER IN CONDITIONING AIR

www.heatcontroller.com