

FG 10

Item no. 40410

Document type: **Product card**
Document date: **2014-05-09**
Generated by: **Systemair Online Catalogue**

Description

- Speed-controllable
- Built-in thermal overload protection with automatic reset
- Can be installed in any position and outdoors
- Maintenance-free and reliable
- Mounting bracket and hardware included
- Five-year factory warranty
- UL Listed, CSA Certified, HVI Certified, Energy Star

FG fans are equipped with backward-curved impeller blades and external rotor motors. With the motor in the airstream the fan provides the constant dissipation of heat buildup thus giving the fan first in class longevity and reliability. The FC mounting clamp (as an accessory) prevents the transfer of vibration to the duct. The fans can be speed-controlled via a stepless thyristor.

To protect the motor from overheating the fan is impedance protected. The housing is manufactured from a two-piece stamped galvanized construction. The two halves are joined using Fantech's unique folded seam closure which gives the fan the first in class, nearly air tight seal. Duct connected outdoor and wet room applications of the fan are possible due to the air tight casing.

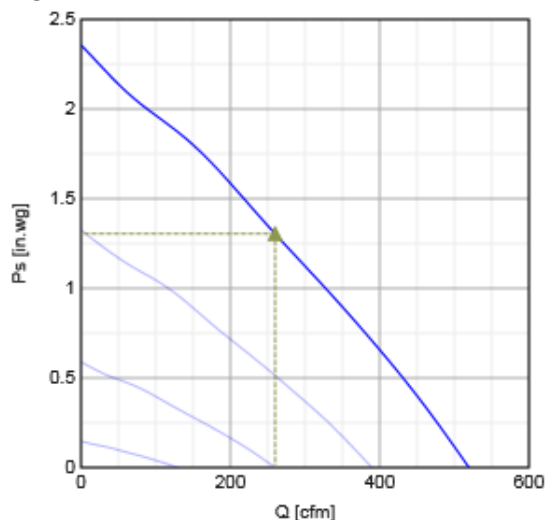


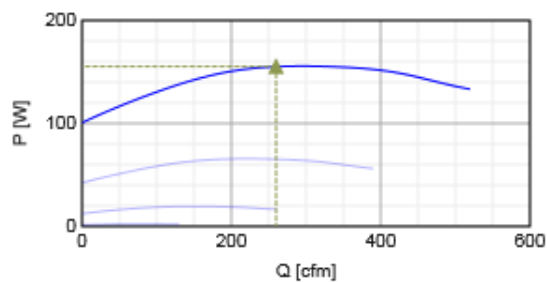
Technical parameters

Voltage	120	V
Frequency	60	Hz
Phase	1	~
Power	133	W
Current	1.43	A
Max. airflow	519	cfm
Fan impeller speed	3082	r.p.m.
Max. temperature of transported air	140	°F
Weight	12	lbs.
Insulation class, motor	B	
Enclosure class, motor	44	IP
Certificate	AMCA Air, HVI, cULus, CSA, Energy Star	

Performance

Diagrams

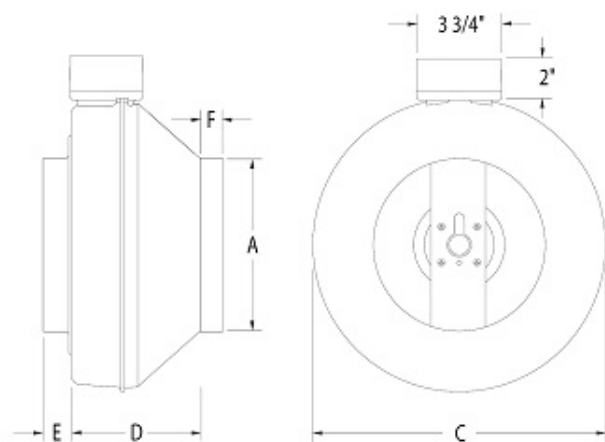




Hydraulic data

	Working point						
	Q [cfm]	Ps [in.wg]	P [W]	n [r.p.m.]	I [A]	SFP [W/l/s]	U [V]
Max efficiency	▲ 260 ▲	▲ 1.3 ▲	▲ 155 ▲	2851	-	1.27	120

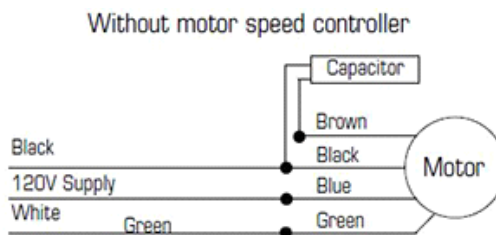
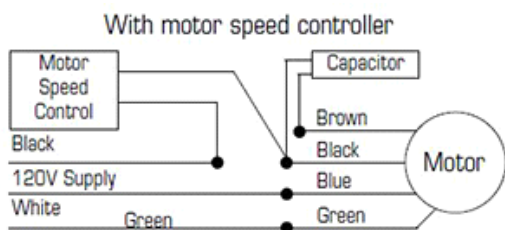
Dimensions



Model	A	C	D	E	F
4	4	8 1/2	6 1/2	1	1
4XL	4	9 3/4	6 15/16	1	1
5	5	8 5/8	6 1/2	1	1
5XL	5	9 3/4	6	1 1/8	1 1/8
6	6	11 3/8	6 1/4	1	7/8
6XL	6	13 1/8	7	1	1
6M	6	13 1/8	7	1	1
8, 8XL	8	13 1/4	6	1 1/8	1
10	10	13 1/4	4 3/4	1 1/8	1
10XL	10	13 1/4	4 13/16	1 1/4	1
12, 12XL	12	16	6 11/16	1 1/2	1

Dimensions in inches

Wiring



Accessories

Electric accessories

FD 60EM (411386)
SCD5 (411381)

WC15 (411102)

Accessories

FC 10,Clamp,2Pcs Kit (411122)

IR10,Iris Damper 10" (411238)

LD10,Silencer,10"Dia Duct (411286)

RSK10,Damper (411116)

SHL36 (411111)

SHL42 (411316)