

Residential Products Catalog

14.2



Product Catalog



Split System Air Conditioners

ASXC18	up to 19 SEER	2
ASXC16	up to 16 SEER	3
ASX16	up to 16 SEER	4
ASX13	up to 14 SEER	5
ANX13	up to 14 SEER	6

Split System Heat Pumps

ASZC18	up to 18 SEER	up to 9.5 HSPF	7
ASZC16	up to 16 SEER	up to 9.75 HSPF	8
ASZ14	up to 15 SEER	up to 9.00 HSPF	9
ASZ13	up to 13 SEER	up to 8.50 HSPF	10
ANZ13	up to 13 SEER	up to 8.50 HSPF	11

Gas Furnaces

About Our Furnaces	12
---------------------------	----

90% AFUE Gas Furnaces

AMVM96	up to 96% AFUE	13
ACVM96	up to 96% AFUE	14
AMVC95 / ACVC95	up to 96% AFUE	15
AMEH96	up to 95% AFUE	16
AMH95	up to 96% AFUE	17
ACSH96	up to 96% AFUE	18
AKSS92	up to 92% AFUE	19

80% AFUE Gas Furnaces

AMVC8 / ADVC8	80% AFUE	20
AMEH8	80% AFUE	21
AMH8	80% AFUE	22
ADSHA	80% AFUE	23
AMS8	80% AFUE	24
ADSS8	80% AFUE	25

Packaged Units

APC14H Air Conditioner	up to 14 SEER	26
APC13M Air Conditioner	13 SEER	27
APC13H Air Conditioner	13 SEER	28
APH15M Heat Pump	up to 15 SEER / up to 8.0 HSPF	29
APH14H Heat Pump	up to 14.5 SEER / up to 8.0 HSPF	30
APH13M Heat Pump	13 SEER / up to 8.0 HSPF	31
APH13H Heat Pump	13 SEER / 11.0 EER / 7.7 HSPF	32
APG15 Gas-Electric	up to 15 SEER / 80% AFUE	33
APG13M Gas-Electric	13 SEER / 80% AFUE	34
APD14 Dual-Fuel	up to 14.5 SEER / 80% AFUE	35

Air Handlers

AVPTC	Multi-Position, Variable-Speed	36
ASPT	Multi-Position Multi-Speed ECM	37
ASUF	Multi-Position Direct Drive ECM	38
ARPT	Multi-Position Direct Drive	39
ARUF	Multi-Position Direct Drive	40
MBVC/MBR	Multi-Position Modular Blowers	41
AWUF	Wall Mount	42
ACNF	Ceiling Mount	43

Indoor Coils

CAPT Cased Indoor "A" Coil, Internal TXVs	44
CAPF Cased Indoor "A" Coil	45
CHPF Cased Indoor "A" Coil	46
CAUF Uncased Indoor "A" Coil	47
CSCF Cased Indoor Slab Coil	48

Controls

ComfortNet™ Communicated Controls	49
Touchscreen Thermostats	51
Digital Thermostats	52

Accessories

Split System Air Conditioners and Heat Pumps	53
Expansion Valve Kit Match-ups	53
Gas Furnaces / Air Handlers	54
Packaged Units	54



Daikin Ductless Systems

KE Series	56
LV Series	57
Quaternity Systems	59
MXS Systems	60
Skyair Systems	62
Accessories	70

SPLIT SYSTEM AIR CONDITIONERS

ASXC18 — Two-Stage, High-Efficiency Air Conditioner / up to 19 SEER

MODEL	NOMINAL CAPACITY (TONS)	VOLTAGE-PHASE	DIMENSIONS			SERVICE VALVE		DBS	SHIP WEIGHT (LBS)
			W"	D"	H"	LIQUID"	SUCTION"		
ASXC180361*	3	208/230-1	35½	35½	38¼	¾	¾	71	228
ASXC180481*	4	208/230-1	35½	35½	38¼	¾	¾	72	290
ASXC180601*	5	208/230-1	35½	35½	38¼	¾	¾	74	296

Goodman Company, L.P., reserves the right to discontinue, or change at any time, specifications or designs without notice or without incurring obligations.

Warranty * Complete warranty details available from your local dealer or at www.amana-hac.com. To receive the Lifetime Unit Replacement Limited Warranty (good for as long as you own your home) and 10-Year Parts Limited Warranty, online registration must be completed within 60 days of installation. Online registration is not required in California or Quebec.



The Amana® brand ASXC18 Air Conditioner uses the chlorine-free R-410A refrigerant and is part of our new ComfortNet™ family of communicating units. In addition, the ASXC18 features energy efficiencies and operating sound levels that are among the best in the heating and cooling industry. The ASXC18 contains the two-stage, high-efficiency Scroll compressor, which provides improved temperature and humidity control. This unit is designed for the consumer who desires superb comfort and quiet operation.

Product Features

- R-410A chlorine-free refrigerant
- Two-stage Scroll UltraTech™ compressor
- High-density foam compressor sound blanket
- ComfortNet™ Communications System compatible
- Expanded Copeland® CoreSense diagnostics
- Set-up capable with two low-voltage wires to outdoor unit
- Diagnostic indicator lights and storage of six fault codes
- Color-coded terminal strip for non-communicating set-up
- Fully charged for 15' of tubing length
- Factory-installed filter drier
- Coil and ambient temperature sensors
- Sweat connection service valves with easy access to gauge ports
- AHRI Certified; ETL Listed
- Amana® brand sound control top design
- Wire fan discharge grille
- Steel louver coil guard
- Baked-on powder-paint finish
- Single-panel access to controls with space provided for field-installed accessories
- When properly anchored, meets the 2010 Florida Building Code unit integrity requirements for hurricane-type winds (Anchor bracket kits available.)



ASXC16 — Two-Stage, High-Efficiency Air Conditioner / up to 16 SEER

MODEL	NOMINAL CAPACITY (TONS)	VOLTAGE-PHASE	DIMENSIONS			SERVICE VALVE		DBS	SHIP WEIGHT (LBS)
			W"	D"	H"	LIQUID"	SUCTION"		
ASXC160241*	2	208/230-60-1	29	29	32¼	¾	¾	71	198
ASXC160361*	3	208/230-60-1	29	29	32¼	¾	¾	73	202
ASXC160481*	4	208/230-60-1	35½	35½	36¼	¾	¾	74	241
ASXC160601*	5	208/230-60-1	35½	35½	38¼	¾	¾	75	301

Goodman Company, L.P., reserves the right to discontinue, or change at any time, specifications or designs without notice or without incurring obligations.

Warranty * Complete warranty details available from your local dealer or at www.amana-hac.com. To receive the Lifetime Unit Replacement Limited Warranty (good for as long as you own your home) and 10-Year Parts Limited Warranty, online registration must be completed within 60 days of installation. Online registration is not required in California or Quebec.



Product Features

- R-410A chlorine-free refrigerant
- Two-stage Scroll UltraTech™ compressor
- High-density foam compressor sound blanket
- ComfortNet™ Communications System compatible
- Expanded Copeland® CoreSense diagnostics
- Simple low-voltage wiring to outdoor unit in communicating mode
- Diagnostic indicator lights and storage of six fault codes
- Color-coded terminal strip for non-communicating set-up
- Fully charged for 15' of tubing length
- Factory-installed filter drier
- Ambient temperature sensors
- Sweat connection service valves with easy access to gauge ports
- AHRI Certified; ETL Listed
- Amana® brand sound control top design
- Wire fan discharge grille
- Steel louver coil guard
- Baked-on powder paint finish
- Single-panel access to controls with space provided for field-installed accessories
- When properly anchored, meets 2010 Florida Building Code unit integrity requirements for hurricane-type winds (Anchor bracket kits available.)



The Amana® brand ASXC16 Air Conditioner uses the chlorine-free R-410A refrigerant and is part of our new ComfortNet™ family of communicating units. In addition, the ASXC16 features energy efficiencies and operating sound levels that are among the best in the heating and cooling industry. This unit contains the two-stage, high-efficiency Scroll compressor, which provides improved temperature and humidity control for the consumer who desires superb comfort and quiet operation.



ASX16 — High-Efficiency Air Conditioner / up to 16 SEER

MODEL	NOMINAL CAPACITY (TONS)	VOLTAGE-PHASE	DIMENSIONS			SERVICE VALVE		DBS	SHIP WEIGHT (LBS)
			W"	D"	H"	LIQUID"	SUCTION"		
ASX160181F*	1.5	208/230-1	29	29	32¼	¾	¾	71.5	163
ASX160241F*	2	208/230-1	29	29	32¼	¾	¾	71.5	160
ASX160301F*	2.5	208/230-1	29	29	32¼	¾	¾	71.5	167
ASX160361F*	3	208/230-1	29	29	36¼	¾	¾	71.5	180
ASX160421F*	3.5	208/230-1	35½	35½	36¼	¾	¾	73	228
ASX160481F*	4	208/230-1	35½	35½	36¼	¾	¾	73	241
ASX160601F*	5	208/230-1	35½	35½	38¼	¾	¾	73	301
ASX160611F*	5	208/230-1	35½	35½	38¼	¾	¾	73	314

Goodman Company, L.P., reserves the right to discontinue, or change at any time, specifications or designs without notice or without incurring obligations.

Warranty * Complete warranty details available from your local dealer or at www.amana-hac.com. To receive the Lifetime Unit Replacement Limited Warranty (good for as long as you own your home) and 10-Year Parts Limited Warranty, online registration must be completed within 60 days of installation. Online registration is not required in California or Quebec.



Product Features

- High-efficiency Scroll compressor
- High-density foam compressor sound blanket
- Expanded Copeland® CoreSense diagnostics
- Fully charged for 15' of tubing length
- Factory-installed filter drier
- Factory-installed high and low pressure switches
- Copper tube/enhanced aluminum fin coil
- Sweat connection service valves with easy access to gauge ports
- AHRI Certified; ETL Listed
- Amana® brand sound control top design
- Wire fan discharge grille
- Steel louver coil guard
- Baked-on powder-paint finish
- Single-panel access to controls with space provided for field-installed accessories
- When properly anchored, meets the 2010 Florida Building Code unit integrity requirements for hurricane-type winds (Anchor bracket kits available.)

The Amana® brand ASX16 High-Efficiency Air Conditioner uses R-410A chlorine-free refrigerant. This unit features energy efficiencies and operating sound levels that are among the best in the heating and cooling industry. The ASX16 features a high-efficiency Scroll compressor that provides improved temperature and humidity control.



ASX13 — Energy-Efficient Air Conditioner / up to 14 SEER

MODEL	NOMINAL CAPACITY (TONS)	VOLTAGE-PHASE	DIMENSIONS			SERVICE VALVE		DBS	SHIP WEIGHT (LBS)
			W"	D"	H"	LIQUID"	SUCTION"		
ASX130181D*	1½	208/230-1	26	26	27½	¾	¾	71	117
ASX130241C*	2	208/230-1	26	26	27½	¾	¾	71	128
ASX130301C*	2½	208/230-1	26	26	27½	¾	¾	72	132
ASX130361C*	3	208/230-1	29	29	28¾	¾	¾	74	177
ASX130361D*	3	208/230-1	26	26	27½	¾	¾	74	135
ASX130421C*	3½	208/230-1	29	29	36¼	¾	¾	74	189
ASX130481C*	4	208/230-1	29	29	36¼	¾	¾	74	193
ASX130601C*	5	208/230-1	29	29	40	¾	¾	77	202
ASX130611A*	5	208/230-1	35½	35½	38¼	¾	¾	72	233

Goodman Company, L.P., reserves the right to discontinue, or change at any time, specifications or designs without notice or without incurring obligations.

Warranty * Complete warranty details available from your local dealer or at www.amana-hac.com. To receive the 10-Year Parts Limited Warranty, online registration must be completed within 60 days of installation. Online registration is not required in California or Quebec.



Product Features

- Energy-efficient Scroll compressor
- R-410A chlorine-free refrigerant
- High-density foam compressor sound blanket
- Expanded Copeland® CoreSense diagnostics
- Factory-installed filter drier
- Copper tube/enhanced aluminum fin coil
- Sweat connection service valves with easy access to gauge ports
- 13 SEER performance with flowrate expansion device
- Contactor with lug connection
- Ground lug connection
- AHRI Certified; ETL Listed
- Amana® brand sound control top design
- Attractive Architectural Gray powder-paint finish with 500-hour salt-spray approval
- Heavy-gauge, galvanized-steel cabinet with rust-resistant screws
- Wire fan discharge grille
- Steel louver coil guard
- Single-panel access to controls with space provided for field-installed accessories
- When properly anchored, meets the 2010 Florida Building Code unit integrity requirements for hurricane-type winds (Anchor bracket kits available.)



The Amana® brand ASX13 Energy-Efficient Air Conditioner uses R-410A chlorine-free refrigerant. This unit features energy efficiencies and operating sound levels that are among the best in the heating and cooling industry. The ASX13 features an energy-efficient Scroll compressor that provides improved temperature and humidity control.



ANX13 — Split System Air Conditioner 1½ to 5 Tons

MODEL	NOMINAL CAPACITY (TONS)	VOLTAGE-PHASE	DIMENSIONS			SERVICE VALVE		DBS	SHIP WEIGHT (LBS)
			W"	D"	H"	LIQUID"	SUCTION"		
ANX130181**	1½	208/230-1	27	27	29½	¾	¾	75	120
ANX130241**	2	208/230-1	27	27	29½	¾	¾	75	130
ANX130301**	2½	208/230-1	27	27	29½	¾	¾	73	159
ANX130361**	3	208/230-1	30	30	31	¾	¾	74	157
ANX130421**	3½	208/230-1	30	30	38	¾	¾	75	206
ANX130481**	4	208/230-1	30	30	38	¾	¾	76	209
ANX130601**	5	208/230-1	30	30	42	¾	¾	77	225
ANX130611A*	5	208/230-1	37	37	39	¾	¾	72	301

Goodman Company, L.P., reserves the right to discontinue, or change at any time, specifications or designs without notice or without incurring obligations.

Warranty * Complete warranty details available from your local dealer or at www.amana-hac.com. To receive the 10-Year Parts Limited Warranty, online registration must be completed within 60 days of installation. Online registration is not required in California or Québec.



Product Features

- R-410A chlorine-free refrigerant
- Energy-efficient compressor
- Factory-installed filter drier
- Copper tube/aluminum fin coil
- Service valves with sweat connections and easy-access gauge ports
- Contactor with lug connection
- Ground lug connection
- AHRI Certified
- ETL Listed
- Amana® brand louvered sound control top design
- Steel louver coil guard
- Heavy-gauge galvanized-steel cabinet
- Attractive Architectural Gray powder-paint finish with 500-hour salt-spray approval
- Top and side maintenance access
- Single-panel access to controls with space provided for field-installed accessories
- When properly anchored, meets the 2010 Florida Building Code unit integrity requirements for hurricane-type winds (anchor bracket kits available)

ASZC18 — Two-Stage, High-Efficiency Heat Pump / up to 18 SEER & 9.5 HSPF

MODEL	NOMINAL CAPACITY (TONS)	VOLTAGE-PHASE	DIMENSIONS			SERVICE VALVE		DBS	SHIP WEIGHT (LBS)
			W"	D"	H"	LIQUID"	SUCTION"		
ASZC180361*	3	208/230-1	35½	35½	38¾	¾	¾	72	268
ASZC180481*	4	208/230-1	35½	35½	38¾	¾	1¾	73	330
ASZC180601*	5	208/230-1	35½	35½	38¾	¾	1¾	75	336

Goodman Company, L.P., reserves the right to discontinue, or change at any time, specifications or designs without notice or without incurring obligations.

Warranty * Complete warranty details available from your local dealer or at www.amana-hac.com. To receive the Lifetime Unit Replacement Limited Warranty (good for as long as you own your home) and 10-Year Parts Limited Warranty, online registration must be completed within 60 days of installation. Online registration is not required in California or Quebec.



Product Features

- R-410A chlorine-free refrigerant
- Two-stage Scroll UltraTech™ compressor
- High-density foam compressor sound blanket
- ComfortNet™ Communications System compatible
- Expanded Copeland® CoreSense diagnostics
- Simple low-voltage wiring to outdoor unit in communicating mode
- Diagnostic indicator lights and storage of six fault codes
- Color-coded terminal strip for non-communicating set-up
- SmartShift™ technology with short-cycle protection to ensure quiet, reliable defrost
- Factory-installed bi-flow liquid-line filter drier
- Factory-installed suction-line accumulator
- Factory-installed compressor crankcase heater
- Factory-installed high-capacity muffler
- Factory-installed coil and ambient temperature sensors
- Fully charged for 15' of tubing length
- Quiet ECM-style condenser fan motor
- Sweat connection service valves with easy access to gauge ports
- AHRI Certified; ETL Listed
- Amana® brand sound control top design
- Wire fan discharge grille
- Steel louver coil guard
- Baked-on powder-paint finish
- Single panel access to controls with space provided for field-installed accessories
- When properly anchored, meets the 2010 Florida Building Code unit integrity requirements for hurricane-type winds (Anchor bracket kits available.)



The Amana® brand ASZC18 Heat Pump uses the chlorine-free R-410A refrigerant and is part of our new ComfortNet™ family of communicating units. In addition, the ASZC18 contains the two-stage, high-efficiency Scroll compressor, which provides improved temperature and humidity control. This unit is designed for the consumer who desires superb comfort and quiet operation.



ASZC16 — Two-Stage, High-Efficiency Heat Pump / up to 16 SEER & 9.75 HSPF

MODEL	NOMINAL CAPACITY (TONS)	VOLTAGE-PHASE	DIMENSIONS			SERVICE VALVE		DBS	SHIP WEIGHT (LBS)
			W"	D"	H"	LIQUID"	SUCTION"		
ASZC160241*	2	208/230-1	29	29	38¾	¾	¾	72	208
ASZC160361*	3	208/230-1	35½	35½	38¾	¾	¾	73	255
ASZC160481*	4	208/230-1	35½	35½	38¾	¾	¾	74	327
ASZC160601*	5	208/230-1	35½	35½	38¾	¾	¾	75	331

Goodman Company, L.P., reserves the right to discontinue, or change at any time, specifications or designs without notice or without incurring obligations.

Warranty * Complete warranty details available from your local dealer or at www.amana-hac.com. To receive the Lifetime Unit Replacement Limited Warranty (good for as long as you own your home) and 10-Year Parts Limited Warranty, online registration must be completed within 60 days of installation. Online registration is not required in California or Quebec.



The Amana® brand ASZC16 Heat Pump uses the R-410A refrigerant and is part of our new ComfortNet™ family of communicating units. In addition, the ASZC16 features energy efficiencies and operating sound levels that are among the best in the heating and cooling industry. This unit contains the two-stage, high-efficiency Scroll compressor, which provides improved temperature and humidity control for the consumer who desires superb comfort and quiet operation.

Product Features

- R-410A chlorine-free refrigerant
- Two-stage Scroll UltraTech™ compressor
- High-density foam compressor sound blanket
- ComfortNet™ Communications System compatible
- Expanded Copeland® CoreSense diagnostics
- Simple low-voltage wiring to outdoor unit in communicating mode
- Diagnostic indicator lights and storage of six fault codes
- Color-coded terminal strip for non-communicating set-up
- SmartShift™ technology to ensure quiet, reliable defrost
- Factory-installed bi-flow liquid-line filter drier
- Factory-installed suction-line accumulator
- Factory-installed compressor crankcase heater
- Factory-installed high-capacity muffler
- Factory-installed coil and ambient temperature sensors
- Fully charged for 15' of tubing length
- Sweat connection service valves with easy access to gauge ports
- AHRI Certified; ETL Listed
- Amana® brand sound control top design
- Wire fan discharge grille
- Steel louver coil guard
- Baked-on powder paint finish
- Single-panel access to controls with space provided for field-installed accessories
- When properly anchored, meets 2010 Florida Building Code unit integrity requirements for hurricane-type winds (Anchor bracket kits available.)



ASZ14 — High-Efficiency Heat Pump / up to 15 SEER & 9.0 HSPF

MODEL	NOMINAL CAPACITY (TONS)	VOLTAGE-PHASE	DIMENSIONS			SERVICE VALVE		DBS	SHIP WEIGHT (LBS)
			W"	D"	H"	LIQUID"	SUCTION"		
ASZ140181**	1½	208/230-1	29	29	34¾	¾	¾	70	191
ASZ140241**	2	208/230-1	29	29	38¾	¾	¾	72	201
ASZ140301**	2½	208/230-1	29	29	38¾	¾	¾	72	203
ASZ140361**	3	208/230-1	29	29	38¾	¾	¾	74	210
ASZ140421**	3½	208/230-1	35½	35½	38¾	¾	¾	73	268
ASZ140481**	4	208/230-1	35½	35½	38¾	¾	¾	74	300
ASZ140601**	5	208/230-1	35½	35½	38¾	¾	¾	75	314

Goodman Company, L.P., reserves the right to discontinue, or change at any time, specifications or designs without notice or without incurring obligations.

Warranty * Complete warranty details available from your local dealer or at www.amana-hac.com. To receive the Lifetime Unit Replacement Limited Warranty (good for as long as you own your home) and 10-Year Parts Limited Warranty, online registration must be completed within 60 days of installation. Online registration is not required in California or Quebec.



Product Features

- R-410A chlorine-free refrigerant
- High-efficiency Scroll compressor
- High density foam compressor sound blanket
- SmartShift™ technology to ensure quiet reliable defrost
- Expanded Copeland® CoreSense diagnostics
- Factory-installed bi-flow liquid line filter drier
- Factory-installed suction line accumulator
- Factory-installed compressor crank case heater
- Factory-installed high capacity muffler
- Service valves with sweat connections and easy access to gauge ports
- Copper tube/enhanced aluminum fin coil
- Fully charged for 15' of tubing length
- Contactor with lug connection
- Ground lug connection
- AHRI Certified; ETL Listed
- Amana® brand sound control top design
- Wire fan discharge grille
- Steel louver coil guard
- Baked-on powder-paint finish
- Single-panel access to controls with space provided for field-installed accessories
- When properly anchored, meets the 2010 Florida Building Code unit integrity requirements for hurricane-type winds (Anchor bracket kits available.)



The Amana® brand ASZ14 High-Efficiency Heat Pump uses the chlorine-free refrigerant R-410A and features operating sound levels that are among the best in the heating and cooling industry. With its 14 SEER rating, the ASZ14 will reduce energy consumption throughout the life of the system compared to U.S. federal minimum efficiency standards for 13 SEER products.



ASZ13 — Energy-Efficient Heat Pump / up to 14 SEER & 8.5 HSPF

MODEL	NOMINAL CAPACITY (TONS)	VOLTAGE-PHASE	DIMENSIONS			SERVICE VALVE		DBS	SHIP WEIGHT (LBS)
			W"	D"	H"	LIQUID"	SUCTION"		
ASZ130181*	1½	208/230-1	26	26	32¼	¾	¾	71	162
ASZ130241*	2	208/230-1	26	26	32¼	¾	¾	73	153
ASZ130301*	2½	208/230-1	26	26	32¼	¾	¾	72	159
ASZ130361*	3	208/230-1	29	29	38¼	¾	¾	74	174
ASZ130421*	3½	208/230-1	29	29	38¼	¾	¾	74	220
ASZ130481*	4	208/230-1	29	29	34¼	¾	¾	76	237
ASZ130601*	5	208/230-1	35½	35½	34¼	¾	¾	75	290

Goodman Company, L.P., reserves the right to discontinue, or change at any time, specifications or designs without notice or without incurring obligations.

Warranty * Complete warranty details available from your local dealer or at www.amana-hac.com. To receive the 10-Year Parts Limited Warranty, online registration must be completed within 60 days of installation. Online registration is not required in California or Quebec.



The Amana® brand ASZ13 Energy-Efficient Heat Pump uses the chlorine-free refrigerant R-410A and features operating sound levels that are among the best in the heating and cooling industry. The ASZ13 features an energy-efficient Scroll compressor that provides improved temperature and humidity control.

Product Features

- R-410A chlorine-free refrigerant
- High-efficiency Scroll compressor
- Expanded Copeland® CoreSense diagnostics
- SmartShift™ technology to ensure quiet reliable defrost
- Factory-installed bi-flow liquid line filter drier
- Factory-installed suction line accumulator
- Factory-installed compressor crankcase heater
- Factory-installed high-capacity muffler
- Service valves with sweat connections and easy access to gauge ports
- Copper tube/enhanced aluminum fin coil
- Fully charged for 15' of tubing length
- Contactor with lug connection
- Ground lug connection
- AHRI Certified; ETL Listed
- Amana® brand sound control top design
- Wire fan discharge grille
- Steel louver coil guard
- Baked-on powder-paint finish
- Single-panel access to controls with space provided for field-installed accessories
- When properly anchored, meets the 2010 Florida Building Code unit integrity requirements for hurricane-type winds (Anchor bracket kits available.)



ANZ13 — Split System Heat Pump 1½ to 5 Tons

MODEL	NOMINAL CAPACITY (TONS)	VOLTAGE-PHASE	DIMENSIONS			SERVICE VALVE		DBS	SHIP WEIGHT (LBS)
			W"	D"	H"	LIQUID"	SUCTION"		
ANZ130181A*	1½	208/230-1	26	26	32¼	¾	¾	71	159
ANZ130241A*	2	208/230 - 1	26	26	32¼	¾	¾	73	159
ANZ130301A*	2½	208/230-1	26	26	32¼	¾	¾	72	169
ANZ130361A*	3	208/230 - 1	29	29	32¼	¾	¾	74	182
ANZ130421A*	3½	208/230-1	29	29	38¼	¾	¾	74	189
ANZ130481A*	4	208/230-1	29	29	34¼	¾	¾	76	198
ANZ130601A*	5	208/230-1	35½	35½	34¼	¾	¾	75	301

Goodman Company, L.P., reserves the right to discontinue, or change at any time, specifications or designs without notice or without incurring obligations.

Warranty * Complete warranty details available from your local dealer or at www.amana-hac.com. To receive the 10-Year Parts Limited Warranty, online registration must be completed within 60 days of installation. Online registration is not required in California or Québec.



Product Features

- R-410A chlorine-free refrigerant
- High-efficiency scroll compressor
- SmartShift™ technology to ensure quiet reliable defrost
- Factory-installed bi-flow liquid line filter drier
- Factory-installed suction line accumulator
- Factory-installed compressor crank case heater
- Factory-installed high capacity muffler
- Service valves with sweat connections and easy access to gauge ports
- Copper tube/enhanced aluminum fin coil
- Fully charged for 15' of tubing length
- Contactor with lug connection
- Ground lug connection
- AHRI Certified; ETL Listed
- Wire fan discharge grille
- Steel louver coil guard
- Baked-on powder-paint finish
- Single-panel access to controls with space provided for field-installed accessories
- When properly anchored, meets the 2010 Florida Building Code unit integrity requirements for hurricane-type winds (anchor bracket kits available)



About Our Furnaces

The Making Of A Million-Air® Heat Exchanger

The Million-Air Heat Exchanger is made of 409 stainless-steel tubing and is formed using a precisely engineered process. This unique manufacturing technology makes a long lasting heat exchanger. Before a heat exchanger design is approved it must pass the ANSI.Z21.47 test which requires 10,000 successful cycles. In 1995, we began testing an Amana brand Million-Air heat exchanger and it's still going strong with over 2.5 million cycles completed.

Wrinkle-Bend Technology

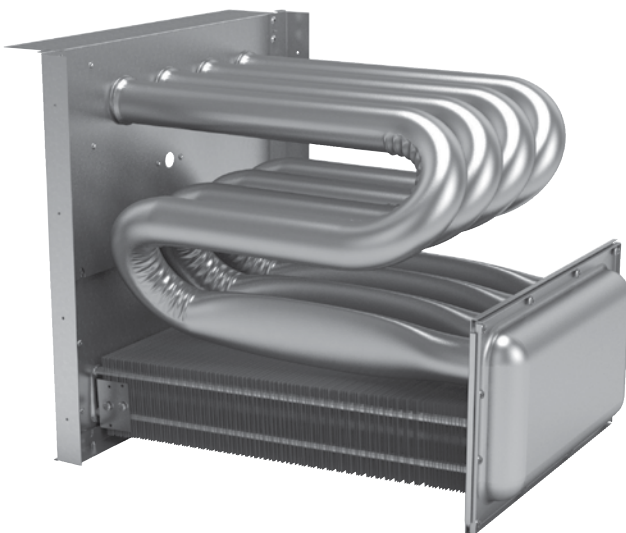
How the tubes in a tubular heat exchanger are bent is critical. Some designs simply bend the tubing, thus stretching the metal on the outside of the tube while compressing the metal on the inside. Our unique process carefully forms the tubing to create precisely placed wrinkles to reduce the likelihood of weak points in the metal. And the wrinkles have an added benefit: they cause turbulence inside the tube, forcing more heat to the tube walls for even greater efficiency.

Dual-Diameter Tubing

With dual-diameter tubing, heat transfer is maximized. As hot gases pass from the larger to the smaller diameter tube, the velocity of the gas increases. This helps to ensure the best possible heat transfer to the home.

Muffler Joint Technology

Where the tubes are joined together and to the vestibule panel, the Million-Air Heat Exchanger takes advantage of the properties of thermal expansion. The larger tube is drawn to a smaller diameter and fitted inside the smaller tube. During operation, the larger tube is hotter, and the joint actually becomes more solid. The same principle is employed where the tubes are joined to the vestibule panel.



Our Unique Million-Air® Heat Exchanger Technology

Over 2.6 Million cycles completed and still going!

Quality features of the Million-Air Heat Exchanger:

- Heavy-duty stainless-steel dual-diameter, tubular heat exchanger
- Began testing in 1995 with over 2.6 million cycles completed to date
- Wrinkle-bend technology minimizes manufacturing stress and promotes turbulence aiding efficiency of heat transfer
- Tubes solidly joined using a crimping process
- Thermal expansion ensures a solid seal at joints
- Optimized combustion air velocity

MILLION-AIR
STAINLESS-STEEL
HEAT EXCHANGER

AMVM96 — Modulating, Variable-Speed Gas Furnace / up to 96% AFUE

MODEL	HIGH-FIRE RATE (BTU/H)		LOW-FIRE RATE (BTU/H)		AFUE %	TONS A/C ¹	DIMENSIONS			SHIP WEIGHT (LBS)
	INPUT	OUTPUT	INPUT	OUTPUT			W"	D"	H"	
AMVM960603BXB*	60,000	57,600	30,000	28,800	96	1.5-3.0	17½	28¾	40	132
AMVM960805CXB*	80,000	76,800	40,000	38,400	96	2.0-5.0	21	28¾	40	150
AMVM961005DXB*	100,000	96,000	50,000	48,000	96	2.0-5.0	24½	28¾	40	165
AMVM961155DXB*	115,000	109,250	57,500	54,625	95	2.0-5.0	24½	28¾	40	165

¹ @ 0.1" - 0.8" ESP

Goodman Company, L.P., reserves the right to discontinue, or change at any time, specifications or designs without notice or without incurring obligations.

Warranty * Complete warranty details available from your local dealer or at www.amana-hac.com. To receive the Lifetime Unit Replacement Limited Warranty (good for as long as you own your home) and 10-Year Parts Limited Warranty, online registration must be completed within 60 days of installation. Online registration is not required in California or Quebec.



Product Features

- ComfortNet™ Communicating Systems compatible
- Heavy-duty Million-Air® stainless-steel dual-diameter, tubular heat exchanger
- Stainless-steel secondary heat exchanger
- Self-calibrating modulating gas valve auto-configures for each installation
- Durable SureStart™ Silicon Nitride igniter
- Quiet variable-speed induced draft blower
- Utilizes ComfortNet™ communicating, two-stage or single-stage thermostats
- Self-diagnostic control board with constant memory fault code history output to a dual 7-segment display
- Color-coded low-voltage terminals with provisions for electronic air cleaner and humidifier
- Efficient and quiet variable-speed airflow system gently ramps up or down according to heating or cooling demand
- Multiple continuous fan speed options offer quiet air circulation
- Auto-Comfort and enhanced dehumidification modes available
- All models comply with California Low NOx emissions standards
- Multi-position installation: upflow, horizontal left or right
- Certified for direct vent (2-pipe) or non-direct vent (1-pipe)
- Easy to install top venting with optional side venting
- Convenient left or right connection for gas and electrical service
- Cabinet air leakage ($Q_{Leak} \leq 2\%$)
- Heavy-gauge steel cabinet with durable baked-enamel finish
- Fully insulated heat exchanger and blower section
- Airtight solid bottom or side-return with easy-cut tabs for effortless removal in bottom air-inlet applications



Amana® brand AMVM96 Upflow-Horizontal, Modulating Variable-Speed Gas Furnaces provide exceptional indoor comfort, quiet operation and feature a stainless-steel tubular heat exchanger and durable Silicon Nitride ignition system. With their variable-speed airflow system and gas modulation from 35% to 100% capacity, these furnaces provide the homeowner with optimum comfort all season long.



ACVM96 — Modulating, Variable-Speed Gas Furnace / up to 96% AFUE

MODEL	HIGH-FIRE RATE (BTU/H)		LOW-FIRE RATE (BTU/H)		AFUE %	TONS A/C ¹	DIMENSIONS			SHIP WEIGHT (LBS)
	INPUT	OUTPUT	INPUT	OUTPUT			W"	D"	H"	
ACVM960604CXB*	60,000	57,600	30,000	28,800	96	1.5-4.0	21	28%	40	139
ACVM960805DXB*	80,000	76,800	40,000	38,400	96	2.0-5.0	24½	28%	40	160
ACVM9601005DXB*	100,000	95,000	50,000	47,500	95	2.0-5.0	24½	28%	40	165

¹@ 0.1" - 0.8" ESP

Goodman Company, L.P., reserves the right to discontinue, or change at any time, specifications or designs without notice or without incurring obligations.

Warranty * Complete warranty details available from your local dealer or at www.amana-hac.com. To receive the Lifetime Unit Replacement Limited Warranty (good for as long as you own your home) and 10-Year Parts Limited Warranty, online registration must be completed within 60 days of installation. Online registration is not required in California or Quebec.



Amana® brand ACVM96 Downflow-Horizontal, Modulating Variable-Speed Gas Furnaces provide exceptional indoor comfort, quiet operation and feature a stainless-steel tubular heat exchanger and durable Silicon Nitride ignition system. With their variable-speed airflow system and gas modulation from 35% to 100% capacity, these furnaces provide the homeowner with optimum comfort all season long.

Product Features

- ComfortNet™ Communicating Systems compatible
- Heavy-duty Million-Air® stainless-steel dual-diameter, tubular heat exchanger
- Stainless-steel secondary heat exchanger
- Self-calibrating modulating gas valve auto-configures for each installation
- Durable SureStart™ Silicon Nitride igniter
- Quiet variable-speed induced draft blower
- Utilizes ComfortNet™ communicating, two-stage or single-stage thermostats
- Self-diagnostic control board with constant memory fault code history output to a dual 7-segment display
- Color-coded low-voltage terminals with provisions for electronic air cleaner and humidifier
- Efficient and quiet variable-speed airflow system gently ramps up or down according to heating or cooling demand
- Multiple continuous fan speed options offer quiet air circulation
- Auto-Comfort and enhanced dehumidification modes available
- All models comply with California Low NOx emissions standards
- Multi-position installation: downflow, horizontal left or right
- Certified for direct vent (2-pipe) or non-direct vent (1-pipe)
- Easy to install top venting with optional side venting
- Convenient left or right connection for gas and electrical service
- Cabinet air leakage (Q_{Leak}) $\leq 2\%$
- Heavy-gauge steel cabinet with durable baked-enamel finish
- Fully insulated heat exchanger and blower section



AMVC95 / ACVC95 — Two-Stage, Variable-Speed Gas Furnace / up to 96% AFUE

MODEL	HIGH-FIRE RATE (BTU/H)		LOW-FIRE RATE (BTU/H)		AFUE %	TONS A/C ¹	DIMENSIONS			SHIP WEIGHT (LBS)
	INPUT	OUTPUT	INPUT	OUTPUT			W"	D"	H"	
AMVC950453BXB*	45,000	43,200	31,500	30,300	96	1½ - 3	17½	28¾	40	123
AMVC950704CXB*	68,000	65,300	47,600	45,700	96	1½ - 4	21	28¾	40	142
AMVC950905CXB*	90,000	86,500	63,000	60,500	96	2 - 5	24½	28¾	40	150
AMVC950905DXB*	90,000	86,500	63,000	60,500	96	2 - 5	24½	28¾	40	155
AMVC951155DXB*	113,000	108,600	79,100	76,000	96	2 - 5	24½	28¾	40	165
ACVC950714CXB*	68,000	64,600	47,600	45,200	95	1.5 - 4.0	21	28¾	40	139
ACVC950915DXB*	90,000	85,500	63,000	59,900	95	2.0 - 5.0	24½	28¾	40	158
ACVC951155DXB*	113,000	105,500	79,100	73,600	93	2.0 - 5.0	24½	28¾	40	160

¹ @ 0.1" - 0.8" ESP

Goodman Company, L.P., reserves the right to discontinue, or change at any time, specifications or designs without notice or without incurring obligations.

Warranty * Complete warranty details available from your local dealer or at www.amana-hac.com. To receive the Lifetime Unit Replacement Limited Warranty (good for as long as you own your home) and 10-Year Parts Limited Warranty, online registration must be completed within 60 days of installation. Online registration is not required in California or Quebec.



Product Features

- ComfortNet™ Communicating Systems compatible
- Heavy-duty Million-Air® stainless-steel dual-diameter, tubular heat exchanger
- Stainless-steel secondary heat exchanger
- Two-stage gas valve provides quiet, economical heating
- Durable SureStart™ silicon nitride igniter
- Quiet two-speed draft inducer
- Utilizes ComfortNet™ communicating, two-stage or single-stage thermostats
- Self-diagnostic control board with constant memory fault code history output to a dual 7-segment display
- Color-coded low-voltage terminals with provisions for electronic air cleaner and humidifier
- Efficient and quiet variable-speed airflow system gently ramps up or down according to heating or cooling demand
- Multiple continuous fan speed options offer quiet air circulation
- Auto-Comfort and enhanced dehumidification modes available
- All models comply with California Low NOx emissions standards
- Designed for multi-position installation —
AMVC95: upflow, horizontal left or right
ACVC95: downflow, horizontal left or right
- Certified for direct vent (2-pipe) or non-direct vent (1-pipe)
- Easy-to-install top venting with optional side venting
- Convenient left or right connection for gas and electrical service
- Cabinet air leakage (Q_{Leak}) ≤ 2%
- Heavy-gauge steel cabinet with durable baked-enamel finish
- Fully-insulated heat exchanger and blower section
- Airtight solid bottom or side return with easy-cut tabs for effortless removal in bottom air-inlet applications



Amana® brand Two-Stage, Variable-Speed Gas Furnaces provide exceptional indoor comfort, quiet operation and feature a stainless-steel tubular heat exchanger and durable silicon nitride Ignition system. With their two-stage gas valve and variable-speed airflow system, these furnaces provide homeowners with comfort all season long.



AMEH96 — Two-Stage Convertible Multi-Speed Gas Furnace / up to 96% AFUE

MODEL	HEATING FIRE RATE (BTU/H)		AFUE %	TONS A/C ¹	DIMENSIONS			SHIP WEIGHT (LBS)
	INPUT	OUTPUT			W"	D"	H"	
AMEH960403BXA*	40,000	38,400	96	3	17½	28¾	40	120
AMEH960603BXA*	60,000	57,700	96	3	17½	28¾	40	124
AMEH960805CXA*	80,000	76,900	96	5	21	28¾	40	144
AMEH961005DXA*	100,000	96,100	96	5	24½	28¾	40	162

¹ Max tons @ 0.5" ESP

Goodman Company, L.P., reserves the right to discontinue, or change at any time, specifications or designs without notice or without incurring obligations.

Warranty * Complete warranty details available from your local dealer or at www.amana-hac.com. To receive the Lifetime Unit Replacement Limited Warranty (good for as long as you own your home) and 10-Year Parts Limited Warranty, online registration must be completed within 60 days of installation. Online registration is not required in California or Quebec.



Amana® brand AMEH96 Upflow Horizontal, Two-Stage, Convertible Multi-Speed ECM Gas Furnaces provide exceptional indoor comfort and feature a stainless-steel tubular heat exchanger and durable silicon nitride Ignition system. This quiet furnace delivers a money-saving efficiency of up to 96% AFUE compared to lower AFUE furnaces.

Product Features

- Energy-efficient multi-speed ECM blower motor
- Heavy-duty Million-Air® stainless-steel dual-diameter, tubular heat exchanger
- Stainless-steel secondary heat exchanger
- Two-stage convertible gas valve automatically adjusts to high or low stage
- Durable SureStart™ silicon nitride igniter
- Quiet single-speed draft inducer
- Self-diagnostic control board with constant memory fault code
- Color-coded low-voltage terminals with provisions for electronic air cleaner and humidifier
- Low continuous fan speed options offer quiet air circulation
- All models comply with California Low NOx emissions standards
- Multi-position installation: upflow, horizontal left or right
- Certified for direct vent (2-pipe) or non-direct vent (1-pipe)
- Easy-to-install top venting with optional side venting
- Convenient left or right connection for gas and electrical service
- Cabinet air leakage (QLeak) ≤ 2%
- Heavy-gauge steel cabinet with durable baked-enamel finish
- Fully-insulated heat exchanger and blower section
- Airtight solid bottom or side return with easy-cut tabs for effortless removal in bottom air-inlet applications



AMH95 — Two-Stage Convertible, Multi-Speed Gas Furnace / up to 96% AFUE

MODEL	HEATING FIRE RATE (BTU/H)		AFUE %	Tons A/C ¹	DIMENSIONS			SHIP WEIGHT (Lbs)
	INPUT	OUTPUT			W"	D"	H"	
AMH950453BXA*	46,000	44,200	96	3	17½	28¾	40	120
AMH950703BXA*	69,000	66,300	96	3	17½	28¾	40	123
AMH950704CXA*	69,000	66,300	96	4	21	28¾	40	125
AMH950904CXA*	92,000	88,400	96	4	21	28¾	40	144
AMH950905CXA*	92,000	88,400	96	5	21	28¾	40	146
AMH951155DXA*	115,000	110,500	96	5	24½	28¾	40	163

¹ Max tons @ 0.5" ESP

Goodman Company, L.P., reserves the right to discontinue, or change at any time, specifications or designs without notice or without incurring obligations.

Warranty * Complete warranty details available from your local dealer or at www.amana-hac.com. To receive the Lifetime Unit Replacement Limited Warranty (good for as long as you own your home) and 10-Year Parts Limited Warranty, online registration must be completed within 60 days of installation. Online registration is not required in California or Quebec.



Product Features

- Heavy-duty Million-Air® stainless-steel dual-diameter, tubular heat exchanger
- Stainless-steel secondary heat exchanger
- Two-stage convertible gas valve automatically adjust to high or low stage
- Durable SureStart™ Silicon Nitride igniter
- Quiet single speed draft inducer
- Self-diagnostic control board with constant memory fault code
- Color-coded low-voltage terminals with provisions for electronic air cleaner and humidifier
- Multi-speed blower motor
- Low continuous fan speed options offer quiet air circulation
- All models comply with California Low NOx emissions standards
- Multi-position installation: upflow, horizontal left or right
- Certified for direct vent (2-pipe) or non-direct vent (1-pipe)
- Easy to install top venting with optional side venting
- Convenient left or right connection for gas and electrical service
- Cabinet air leakage (Q_{Leak}) ≤ 2%
- Heavy-gauge steel cabinet with durable baked-enamel finish
- Fully insulated heat exchanger and blower section
- Airtight solid bottom or side-return with easy-cut tabs for effortless removal in bottom air-inlet applications



Amana® brand AMH95 Upflow Horizontal, Two-Stage, Convertible Multi-Speed Gas Furnaces provide exceptional indoor comfort and feature a stainless-steel tubular heat exchanger and durable Silicon Nitride Ignition system. This quiet furnace delivers a money-saving efficiency of up to 96% AFUE compared to lower AFUE furnaces.

SureStart
SILICON NITRIDE IGNITER

MILLION-AIR
STAINLESS-STEEL
HEAT EXCHANGER

ACSH96 — Two-Stage Convertible Multi-speed Gas Furnace / up to 96% AFUE

MODEL	HEATING FIRE RATE (BTU/H)		AFUE %	TONS A/C ¹	DIMENSIONS			SHIP WEIGHT (LBS)
	INPUT	OUTPUT			W"	D"	H"	
ACSH960453BXA*	46,000	44,200	96	3	17½	28¾	40	120
ACSH960703BXA*	69,000	66,300	96	3	17½	28¾	40	123
ACSH960704CXA*	69,000	66,300	96	4	21	28¾	40	123
ACSH960904CXA*	92,000	88,400	96	4	21	28¾	40	144
ACSH960905DXA*	92,000	88,400	96	5	24½	28¾	40	146
ACSH961155DXA*	115,000	106,500	93	5	24½	28¾	40	160

¹ Max tons @ 0.5" ESP

Goodman Company, L.P., reserves the right to discontinue, or change at any time, specifications or designs without notice or without incurring obligations.

Warranty

* Complete warranty details available from your local dealer or at www.amana-hac.com. To receive the Lifetime Unit Replacement Limited Warranty (good for as long as you own your home) and 10-Year Parts Limited Warranty, online registration must be completed within 60 days of installation. Online registration is not required in California or Quebec.



Amana® brand ACSH96 Downflow Horizontal, Two-Stage, Convertible Multi-Speed Gas Furnaces provide exceptional indoor comfort and feature a stainless-steel tubular heat exchanger and durable silicon nitride Ignition system. This quiet furnace delivers a money-saving efficiency of up to 96% AFUE compared to lower AFUE furnaces.

Product Features

- Heavy-duty Million-Air® stainless-steel dual-diameter, tubular heat exchanger
- Stainless-steel secondary heat exchanger
- Two-stage convertible gas valve automatically adjust to high or low stage
- Durable SureStart™ silicon nitride igniter
- Quiet single-speed draft inducer
- Self-diagnostic control board with constant memory fault code
- Color-coded, low-voltage terminals with provisions for electronic air cleaner and humidifier
- Multi-speed blower motor
- Low continuous fan speed options offer quiet air circulation
- All models comply with California Low NOx emissions standards
- Multi-position installation: downflow, horizontal left or right
- Certified for direct vent (2-pipe) or non-direct vent (1-pipe)
- Easy-to-install top venting with optional side venting
- Convenient left or right connection for gas and electrical service
- Cabinet air leakage ($Q_{Leak} \leq 2\%$)
- Heavy-gauge steel cabinet with durable baked-enamel finish
- Fully-insulated heat exchanger and blower section
- Airtight solid bottom or side return with easy-cut tabs for effortless removal in bottom air-inlet applications



AKSS92 — Single-Stage Multi-Speed Gas Furnace / up to 92% AFUE

MODEL	HEATING FIRE RATE (BTU/H)		AFUE %	TONS A/C ¹	DIMENSIONS			SHIP WEIGHT (Lbs)
	INPUT	OUTPUT			W"	D"	H"	
AKSS920453BXA*	46,000	42,800	92	3	17½	28¾	40	115
AKSS920703BXA*	69,000	64,400	92	3	17½	28¾	40	120
AKSS920704CXA*	69,000	64,400	92	4	21	28¾	40	134
AKSS920904CXA*	92,000	86,000	92	4	21	28¾	40	138
AKSS920905DXA*	92,000	86,000	92	5	24½	28¾	40	150
AKSS921155DXA*	115,000	106,500	92	5	24½	28¾	40	155

¹ Max tons @ 0.5" ESP

Goodman Company, L.P., reserves the right to discontinue, or change at any time, specifications or designs without notice or without incurring obligations.

Warranty * Complete warranty details available from your local dealer or at www.amana-hac.com. To receive the Lifetime Heat Exchanger Limited Warranty (good for as long as you own your home) and 10-Year Parts Limited Warranty, online registration must be completed within 60 days of installation. Online registration is not required in California or Quebec.



Product Features

- Heavy-duty Million-Air® stainless-steel, dual-diameter, tubular heat exchanger
- Stainless-steel secondary heat exchanger
- Single-stage gas valve
- Durable silicon carbide ignitor
- Quiet single-speed draft inducer
- Self-diagnostic control board
- Color-coded low-voltage terminals
- Multi-speed blower motor
- All models comply with California Low NOx emissions standards
- Multi-position installation: upflow, convertible horizontal left or right with kit
- Certified for direct vent (2-pipe) or non-direct venting
- Easy-to-install top venting with optional side venting
- Convenient left or right connection for gas and electrical service
- Cabinet air leakage (Q_{Leak}) ≤ 2%
- Heavy-gauge steel cabinet with durable baked-enamel finish
- Foil-faced insulated heat exchanger
- Airtight solid bottom or side return with easy-cut tabs for effortless removal in bottom air inlet applications



Amana® brand AKSS92 Upflow Horizontal (kit) Single-Stage, Multi-Speed Gas Furnaces features a stainless steel heat exchanger and self-diagnostic control board.



AMVC8 / ADVC8 — Two-Stage, Variable-Speed Gas Furnace / 80% AFUE

MODEL	HIGH-FIRE RATE (BTU/H)		LOW-FIRE RATE (BTU/H)		AFUE %	Tons A/C ¹	DIMENSIONS			SHIP WEIGHT (LBS)
	INPUT	OUTPUT	INPUT	OUTPUT			W"	D"	H"	
AMVC80604B*B*	60,000	48,000	42,000	33,600	80	1½ to 4	17½	28¾	33¾	107
AMVC80805C*B*	80,000	64,000	56,000	44,800	80	2 to 5	21	28¾	33¾	121
AMVC81005C*B*	100,000	80,000	70,000	56,000	80	2 to 5	21	28¾	33¾	124
ADVC80603B*B*	60,000	48,000	42,000	33,600	80	1½ to 3	17½	28¾	33¾	105
ADVC80805C*B*	80,000	64,000	56,000	44,800	80	2 to 5	21	28¾	33¾	125
ADVC81005C*B*	100,000	80,000	70,000	56,000	80	2 to 5	21	28¾	33¾	129

¹ @ 0.1" - 0.8" ESP

Goodman Company, L.P., reserves the right to discontinue, or change at any time, specifications or designs without notice or without incurring obligations.

Warranty * Complete warranty details available from your local dealer or at www.amana-hac.com. To receive the Lifetime Unit Replacement Limited Warranty (good for as long as you own your home) and 10-Year Parts Limited Warranty, online registration must be completed within 60 days of installation. Online registration is not required in California or Quebec.



Amana® brand AMVC8/ADVC8 Two-Stage, Variable-Speed Multi-Position Gas Furnaces provide exceptional indoor comfort, quiet operation, and feature a stainless-steel tubular heat exchanger and durable Silicon Nitride Ignition system. With their two-stage gas valves and variable-speed circulator blowers, these furnaces provide comfort all season long.

Product Features

- ComfortNet™ Communicating Systems compatible
- Heavy-duty Million-Air® stainless-steel dual-diameter, tubular heat exchanger
- Two-stage gas valve provides quiet, economical heating
- Durable SureStart™ Silicon Nitride igniter
- Quiet two-speed induced draft blower
- Utilizes ComfortNet™ communicating, two-stage or single-stage thermostats
- Self-diagnostic control board with constant memory fault code history output to a dual 7-segment display
- Color-coded low-voltage terminals with provisions for electronic air cleaner and humidifier
- Efficient and quiet variable-speed airflow system gently ramps up or down according to heating or cooling demand
- Multiple continuous fan speed options offer quiet air circulation
- Auto-Comfort and enhanced dehumidification modes available
- California Low NOx emissions standards models available
- Multi-position installation:
AMVC8 - upflow, horizontal left or right.
ADVC8 - dedicated downflow
- Convenient left or right connection for gas and electrical service
- Cabinet air leakage ($Q_{Leak} \leq 2\%$)
- Heavy-gauge steel cabinet with durable baked-enamel finish
- Fully insulated heat exchanger and blower section



AMEH8 — Two-Stage Convertible Multi-Speed ECM Gas Furnace 80% AFUE

MODEL	HEATING FIRE RATE (BTU/H)		AFUE %	TONS A/C ¹	DIMENSIONS			SHIP WEIGHT (LBS)
	INPUT	OUTPUT			W"	D"	H"	
AMEH800603B*A*	60,000	48,000	80	3	17½	28¾	33¾	98
AMEH800805C*A*	80,000	64,000	80	5	21	28¾	33¾	116
AMEH800805D*A*	80,000	64,000	80	5	24	28¾	33¾	123
AMEH801005C*A*	100,000	80,000	80	5	21	28¾	33¾	120

¹ Max tons @ 0.5" ESP

Goodman Company, L.P., reserves the right to discontinue, or change at any time, specifications or designs without notice or without incurring obligations.

Warranty * Complete warranty details available from your local dealer or at www.amana-hac.com. To receive the Lifetime Unit Replacement Limited Warranty (good for as long as you own your home) and 10-Year Parts Limited Warranty, online registration must be completed within 60 days of installation. Online registration is not required in California or Quebec.



Product Features

- Energy-efficient multi-speed ECM blower motor
- Heavy-duty Million-Air® stainless-steel dual-diameter, tubular heat exchanger
- Two-stage convertible gas valve automatically adjusts to high or low stage
- Durable SureStart™ silicon nitride igniter
- Quiet single-speed draft inducer
- Self-diagnostic control board with constant memory fault code
- Color-coded low-voltage terminals with provisions for electronic air cleaner and humidifier
- Low continuous fan speed options offer quiet air circulation
- California Low NOx emissions standards models available
- Multi-position installation: upflow, horizontal left or right with kit
- Convenient left or right connection for gas and electrical service
- Cabinet air leakage (Q_{Leak}) $\leq 2\%$
- Heavy-gauge steel cabinet with durable baked-enamel finish
- Fully-insulated heat exchanger and blower section



Amana® brand AMEH8 Upflow Horizontal, Two-stage Convertible, Multi-speed ECM Gas Furnaces feature a stainless-steel tubular heat exchanger and durable silicon nitride Ignition system. With a heavy-gauge reinforced, insulated steel cabinet and durable baked enamel finish, this unit can be installed in a variety of locations.



AMH8 — Two-Stage Convertible, Multi-Speed Gas Furnace / 80% AFUE

MODEL	HEATING FIRE RATE (BTU/H)		AFUE %	TONS A/C ¹	DIMENSIONS			SHIP WEIGHT (LBS)
	INPUT	OUTPUT			W"	D"	H"	
AMH80403A*B*	40,000	32,000	80	3	14	28¾	33¾	86
AMH80603A*B*	60,000	48,000	80	3	14	28¾	33¾	90
AMH80604B*B*	60,000	48,000	80	4	17½	28¾	33¾	98
AMH80803B*B*	80,000	64,000	80	3	17½	28¾	33¾	106
AMH80804B*B*	80,000	64,000	80	4	17½	28¾	33¾	107
AMH80805C*B*	80,000	64,000	80	5	21	28¾	33¾	114
AMH81005C*B*	100,000	80,000	80	5	21	28¾	33¾	118
AMH81205D*B*	120,000	96,000	80	5	24½	28¾	33¾	132
AMH81405DXC*	140,000	112,000	80	5	24½	28¾	33¾	163

¹ Max tons @ 0.5" ESP

Goodman Company, L.P., reserves the right to discontinue, or change at any time, specifications or designs without notice or without incurring obligations.

Warranty

* Complete warranty details available from your local dealer or at www.amana-hac.com. To receive the Lifetime Unit Replacement Limited Warranty (good for as long as you own your home) and 10-Year Parts Limited Warranty, online registration must be completed within 60 days of installation. Online registration is not required in California or Quebec.



Amana® brand AMH8 TwinComfort™ Multi-Position, Multi-Speed Gas Furnaces feature a stainless-steel tubular heat exchanger and durable Silicon Nitride Ignition system. With a heavy-gauge reinforced, insulated steel cabinet and durable baked enamel finish, this unit can be installed in a variety of locations.

Product Features

- Heavy-duty Million-Air® stainless-steel dual-diameter, tubular heat exchanger
- Two-stage convertible gas valve automatically adjust to high or low stage
- Durable SureStart™ Silicon Nitride igniter
- Quiet single speed draft inducer
- Self-diagnostic control board with constant memory fault code
- Color-coded low-voltage terminals with provisions for electronic air cleaner and humidifier
- Multi-speed blower motor
- Low continuous fan speed options offer quiet air circulation
- California Low NOx emissions standards models available
- Multi-position installation: upflow, horizontal left or right
- Convenient left or right connection for gas and electrical service
- Heavy-gauge steel cabinet with durable baked-enamel finish
- Fully insulated heat exchanger and blower section
- Cabinet air leakage (Q_{Leak}) ≤ 2%

SureStart™
SILICON NITRIDE IGNITER

MILLION-AIR
STAINLESS-STEEL
HEAT EXCHANGER

ADSH8 — Two-Stage Convertible Multi-Speed Gas Furnace 80% AFUE

MODEL	HEATING FIRE RATE (BTU/H)		AFUE %	TONS A/C ¹	DIMENSIONS			SHIP WEIGHT (LBS)
	INPUT	OUTPUT			W"	D"	H"	
ADSH800403A*A*	40,000	32,000	80	3	14	28¾	33¾	88
ADSH800603A*A*	60,000	48,000	80	3	14	28¾	33¾	92
ADSH800804B*A*	80,000	64,000	80	4	17½	28¾	33¾	106
ADSH801005C*A*	100,000	80,000	80	5	21	28¾	33¾	114

¹ Max tons @ 0.5" ESP

Goodman Company, L.P., reserves the right to discontinue, or change at any time, specifications or designs without notice or without incurring obligations.

Warranty * Complete warranty details available from your local dealer or at www.amana-hac.com. To receive the Lifetime Unit Replacement Limited Warranty (good for as long as you own your home) and 10-Year Parts Limited Warranty, online registration must be completed within 60 days of installation. Online registration is not required in California or Quebec.



Product Features

- Heavy-duty Million-Air® stainless-steel dual-diameter, tubular heat exchanger
- Two-stage convertible gas valve automatically adjusts to high or low stage
- Durable SureStart™ silicon nitride igniter
- Quiet single-speed draft inducer
- Self-diagnostic control board with constant memory fault code
- Color-coded low-voltage terminals with provisions for electronic air cleaner and humidifier
- Multi-speed blower motor
- Low continuous fan speed options offer quiet air circulation
- California Low NOx emissions standards models available
- Installation: dedicated downflow
- Convenient left or right connection for gas and electrical service
- Cabinet air leakage ($Q_{Leak} \leq 2\%$)
- Heavy-gauge steel cabinet with durable baked-enamel finish
- Fully-insulated heat exchanger and blower section



Amana® brand ADSH8 Downflow Horizontal, Two-stage Convertible, Multi-Speed Gas Furnaces feature a stainless-steel tubular heat exchanger and durable silicon nitride Ignition system. With a heavy-gauge reinforced, insulated steel cabinet and durable baked enamel finish, this unit can be installed in a variety of locations.

SureStart
SILICON NITRIDE IGNITER

MILLION-AIR
STAINLESS-STEEL
HEAT EXCHANGER

AMS8 — Single-Stage Multi-Speed Gas Furnaces 80% AFUE

MODEL	HEATING FIRE RATE (BTU/H)		AFUE %	TONS A/C ¹	DIMENSIONS			SHIP WEIGHT (LBS)
	INPUT	OUTPUT			W"	D"	H"	
AMS80403A*B*	40,000	32,000	80%	3	14	28¾	33¾	84
AMS80603A*B*	60,000	48,000	80%	3	14	28¾	33¾	88
AMS80604B*B*	60,000	48,000	80%	4	17½	28¾	33¾	98
AMS80804B*B*	80,000	64,000	80%	4	17½	28¾	33¾	106
AMS80805C*B*	80,000	64,000	80%	5	21	28¾	33¾	114
AMS81005C*B*	100,000	80,000	80%	5	21	28¾	33¾	118
AMS81205D*B*	120,000	96,000	80%	5	24½	28¾	33¾	130
AMS81405D*C*	140,000	112,000	80%	5	24½	28¾	33¾	130

¹ Max tons @ 0.5" ESP

Goodman Company, L.P., reserves the right to discontinue, or change at any time, specifications or designs without notice or without incurring obligations.

Warranty

* Complete warranty details available from your local dealer or at www.amana-hac.com. To receive the Lifetime Heat Exchanger Limited Warranty (good for as long as you own your home) and 10-Year Parts Limited Warranty, online registration must be completed within 60 days of installation. Online registration is not required in California or Quebec.



Product Features

- Heavy-duty Million-Air® stainless-steel dual-diameter, tubular heat exchanger
- Single-stage gas valve
- Durable silicon carbide ignitor
- Quiet, single-speed draft inducer
- Self-diagnostic control board
- Color-coded low-voltage terminals
- Multi-speed blower motor
- California Low NOx emissions standards models available
- Installation: Upflow, horizontal left or right
- Convenient left or right connection for gas and electrical service
- Cabinet air leakage ($Q_{Leak} \leq 2\%$)
- Heavy-gauge steel cabinet with durable baked-enamel finish

Amana® brand AMS8 Upflow Horizontal Single-Stage, Multi-Speed Gas Furnaces features a stainless steel heat exchanger and self-diagnostic control board.



ADSS8 — Single-Stage Multi-Speed Gas Furnaces 80% AFUE

MODEL	HEATING FIRE RATE (BTU/H)		AFUE %	TONS A/C ¹	DIMENSIONS			SHIP WEIGHT (LBS)
	INPUT	OUTPUT			W"	D"	H"	
ADSS800403A*A*	40,000	32,000	80	3	14	28¾	33¾	88
ADSS800603A*A*	60,000	48,000	80	3	14	28¾	33¾	92
ADSS800804B*A*	80,000	64,000	80	4	17½	28¾	33¾	105
ADSS801005C*A*	100,000	80,000	80	5	21	28¾	33¾	113

¹ Max tons @ 0.5" ESP

Goodman Company, L.P., reserves the right to discontinue, or change at any time, specifications or designs without notice or without incurring obligations.

Warranty * Complete warranty details available from your local dealer or at www.amana-hac.com. To receive the Lifetime Heat Exchanger Limited Warranty (good for as long as you own your home) and 10-Year Parts Limited Warranty, online registration must be completed within 60 days of installation. Online registration is not required in California or Quebec.



Product Features

- Heavy-duty Million-Air® stainless-steel dual-diameter, tubular heat exchanger
- Single-stage gas valve
- Durable silicon carbide ignitor
- Quiet, single-speed draft inducer
- Self-diagnostic control board
- Color-coded low-voltage terminals
- Multi-speed blower motor
- California Low NOx emissions standards models available
- Installation: Dedicated downflow
- Convenient left or right connection for gas and electrical service
- Cabinet air leakage ($Q_{Leak} \leq 2\%$)
- Heavy-gauge steel cabinet with durable baked-enamel finish



Amana® brand ADSS8 Downflow Single-Stage, Multi-Speed Gas Furnaces features a stainless steel heat exchanger and self-diagnostic control board.

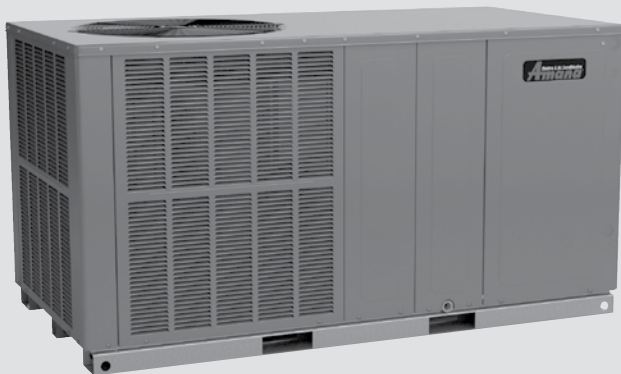


APC14H Air Conditioner — up to 14 SEER

MODEL	NOMINAL CAPACITIES		ELECTRIC HEAT (kW)	SEER / EER	VOLTAGE-PHASE	DIMENSIONS			DBs	SHIP WEIGHT (LBS)
	TONS	CFM				W"	D"	H"		
APC1424H41D*	2	875	5, 8, 10	14.0 / 12.0	208/230-1	66"	34"	30	76	310
APC1430H41D*	2½	1,050	5, 8, 10,15	14.0 / 12.0	208/230-1	66"	34"	30	76	315
APC1436H41D*	3	1,200	5, 8, 10,15,20	14.0 / 12.0	208/230-1	66"	34"	35	78	320
APC1442H41D*	3½	1,200	5, 8, 10,15, 20	14.0 / 12.0	208/230-1	66"	34"	35	78	365
APC1448H41D*	4	1,600	5, 8, 10,15, 20	14.0 / 12.0	208/230-1	66"	34"	38"	80	375
APC1460H41D*	5	1,600	5, 8, 10,15, 20	14.2 / 12.0	208/230-1	66"	34"	38"	80	380

Goodman Company, L.P., reserves the right to discontinue, or change at any time, specifications or designs without notice or without incurring obligations.

Warranty * Complete warranty details available from your local dealer or at www.amana-hac.com. To receive the 10-Year Parts Limited Warranty, online registration must be completed within 60 days of installation. Online registration is not required in California or Quebec.



Product Features

- High-efficiency compressor with internal relief valve
- Fully charged R-410A refrigerant system
- EEM blower motor
- Quiet horizontal discharge
- Copper tube/aluminum fin coil
- Totally enclosed, permanently lubricated condenser fan motor
- Electric heat kits available as field-installed options
- Heavy-gauge galvanized-steel cabinet with attractive Architectural Gray powder-paint finish
- Fully insulated blower compartment with convenient access panels
- Louvered condenser coil protection
- All-Aluminum evaporator coil



APC13M Air Conditioner — 13 SEER

MODEL	NOMINAL CAPACITIES		ELECTRIC HEAT (kW)	SEER / EER	VOLTAGE-PHASE	DIMENSIONS			DBS	SHIP WEIGHT (LBS)
	TONS	CFM				W"	D"	H"		
APC1336M41C*	3	1,080	5, 8, 10,15	13.0 / 11.0	208/230-1	47	51	34%	80.1	365
APC1348M41C*	4	1,675	5, 8, 10,15, 20	13.0 / 11.0	208/230-1	47	51	42%	81.7	435
APC1360M41C*	5	1,750	5, 8, 10,15, 20	13.0 / 10.9	208/230-1	47	51	42%	80.2	458

Goodman Company, L.P., reserves the right to discontinue, or change at any time, specifications or designs without notice or without incurring obligations.

Warranty * Complete warranty details available from your local dealer or at www.amana-hac.com. To receive the 10-Year Parts Limited Warranty, online registration must be completed within 60 days of installation. Online registration is not required in California or Quebec.



Product Features

- Energy-efficient compressor with internal relief valve
- EEM blower motor; PSC blower motor on 3-ton units
- Fully charged R-410A refrigerant system
- Convertible airflow: horizontal or downflow
- Copper tube/aluminum fin coils
- Totally enclosed, permanently lubricated condenser fan motor
- Electric heat kits available as field-installed options
- Heavy-gauge galvanized-steel cabinet with attractive Architectural Gray powder-paint finish
- Louvered condenser coil protection
- When properly anchored, meets the 2010 Florida Building Code unit integrity requirements for hurricane-type winds (Anchor bracket kits available.)
- All-Aluminum evaporator coil

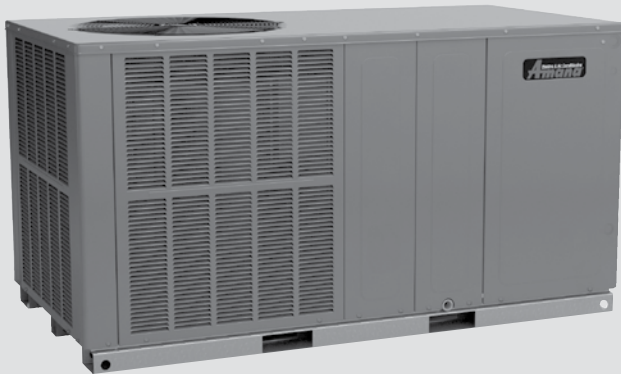


APC13H Air Conditioner — 13 SEER

MODEL	COOLING CAPACITY		ELECTRIC HEAT (kW)	SEER / EER	VOLTAGE-PHASE	DIMENSIONS			DBS	SHIP WEIGHT (LBS)
	TONS	CFM				W'	D'	H'		
APC1324H41C*	2	875	5, 8, 10	13.0 / 11.0	208/230-1	66½	34	30	76	305
APC1330H41C*	2½	1,050	5, 8, 10,15	13.0 / 11.0	208/230-1	66½	34	30	76	305
APC1336H41C*	3	1,200	5, 8, 10,15	13.0 / 11.0	208/230-1	66½	34	30	78	320
APC1342H41C*	3½	1,400	5, 8, 10,15, 20	13.0 / 11.0	208/230-1	66½	34	35	78	375
APC1349H41C*	4	1,600	5, 8, 10,15, 20	13.0 / 11.0	208/230-1	66½	34	38¾	80	375
APC1360H41D*	5	1,900	5, 8, 10,15, 20	13.0 / 11.0	208/230-1	66½	34	38¾	80	375

Goodman Company, L.P., reserves the right to discontinue, or change at any time, specifications or designs without notice or without incurring obligations.

Warranty * Complete warranty details available from your local dealer or at www.amana-hac.com. To receive the 10-Year Parts Limited Warranty, online registration must be completed within 60 days of installation. Online registration is not required in California or Quebec.



Product Features

- Energy-efficient compressor with internal relief valve
- PSC blower motor; EEM blower motor on 5-ton units
- Fully charged R-410A refrigerant system
- Quiet horizontal discharge
- Copper tube/aluminum fin coil
- Totally enclosed, permanently lubricated condenser fan motor
- Electric heat kits available as field-installed options
- Heavy-gauge galvanized-steel cabinet with attractive Architectural Gray powder-paint finish
- Fully insulated blower compartment with convenient access panels
- Louvered condenser coil protection
- All-Aluminum evaporator coil



APH15M Heat Pump — up to 15 SEER / up to 8.0 HSPF

MODEL	NOMINAL RATINGS			ELECTRIC HEAT (kW)	VOLTAGE/ PHASE/Hz	DIMENSIONS			DBS	SHIP WEIGHT (LBS)
	TONS	HEATING ¹	CFM			W"	D"	H"		
APH1524M41C*	2	23,400	860	5,8,10	208-230/1/60	47	51	34¾	76	376
APH1530M41C*	2½	27,400	1,000	5,8,10,15	208-230/1/60	47	51	34¾	76	385
APH1536M41C*	3	34,500	1,200	5,8,10,15	208-230/1/60	47	51	34¾	76	438
APH1543M41C*	3½	39,000	1,300	5,8,10,15	208-230/1/60	47	51	42¾	78	492
APH1549M41C*	4	45,500	1,350	5,8,10,15,20	208-230/1/60	47	51	42¾	78	490
APH1560M41C*	5	56,000	1,800	5,8,10,15,20	208-230/1/60	47	51	42¾	78	503

¹ BTU/h

Goodman Company, L.P., reserves the right to discontinue or change at any time specifications or designs without notice or without incurring obligations.

Warranty * Complete warranty details available from your local dealer or at www.amana-hac.com. To receive the Lifetime Compressor Limited Warranty (good for as long as you own your home) and 10-Year Parts Limited Warranty, online registration must be completed within 60 days of installation. Online registration is not required in California or Quebec.



Product Features

- Energy-efficient compressor with internal relief valve
- Two-stage heating & cooling on 4-, and 5-ton units
- Fully charged R-410A system
- ECM blower motor
- Liquid-line filter drier
- Convertible airflow: horizontal or downflow
- Copper tube/aluminum fin coils
- Totally enclosed, permanently lubricated condenser fan motor
- Electric heat kit available as a field-installed option
- All-Aluminum evaporator coil
- Heavy-gauge galvanized-steel cabinet with attractive Architectural Gray powder-paint finish
- Fully insulated air-handling compartment with convenient access panels
- Louvered condenser coil protection
- One footprint; two heights



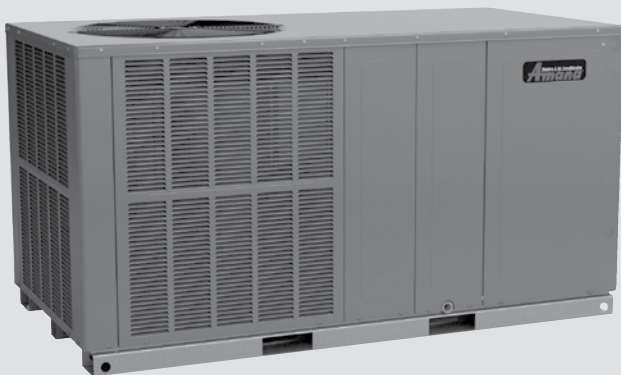
APH14H Heat Pump — up to 14.5 SEER / up to 8.0 HSPF

MODEL	NOMINAL RATINGS			ELECTRIC HEAT (kW)	SEER / EER	VOLTAGE-PHASE	DIMENSIONS			DBS	SHIP WEIGHT (LBS)
	TONS	CFM	HEATING ¹				W"	D"	H"		
APH1424H41D*	2	875	22,800	5, 8, 10	14.5 / 12.0	208/230-1	66%	34%	30	76	325
APH1430H41D*	2½	1,050	27,600	5, 8, 10,15	14.0 / 12.0	208/230-1	66%	34%	30	76	325
APH1436H41D*	3	1,200	32,200	5, 8, 10,15	14.0 / 11.5	208/230-1	66%	34%	35	78	385
APH1442H41D*	3½	1,300	37,600	5, 8, 10,15, 20	14.0 / 12.0	208/230-1	66%	34%	35	78	385
APH1448H41D*	4	1,600	44,000	5, 8, 10,15, 20	14.0 / 12.0	208/230-1	66%	34%	38%	80	415
APH1460H41D*	5	1,700	54,500	5, 8, 10,15, 20	14.0 / 12.0	208/230-1	66%	34%	38%	80	415

¹ BTU/h

Goodman Manufacturing Company, L.P., reserves the right to discontinue or change at any time specifications or designs without notice or without incurring obligations.

Warranty * Complete warranty details available from your local dealer or at www.amana-hac.com. To receive the 10-Year Parts Limited Warranty, online registration must be completed within 60 days of installation. Online registration is not required in California or Quebec.



Product Features

- High-efficiency compressor with internal relief valve
- EEM blower motor
- Fully charged R-410A refrigerant system
- Quiet horizontal discharge
- Copper tube/aluminum fin coil
- Totally enclosed, permanently lubricated condenser fan motor
- Electric heat kits available as field-installed options
- Heavy-gauge galvanized-steel cabinet with attractive Architectural Gray powder-paint finish
- All-Aluminum evaporator coil



APH13M Heat Pump — 13 SEER / up to 8.0 HSPF

MODEL	NOMINAL RATINGS			ELECTRIC HEAT (kW)	SEER / EER	VOLTAGE-PHASE	DIMENSIONS			DBS	SHIP WEIGHT (LBS)
	TONS	CFM	HEATING ¹				W"	D"	H"		
APH1324M41C*	2	850	23,000	5,8,10	13 / 11	208/230-1	47	51	34¾	76.7	365
APH1330M41C*	2½	1,050	27,000	5,8,10,15	13 / 11	208/230-1	47	51	34¾	75.3	390
APH1336M41C*	3	1,200	34,600	5,8,10,15	13 / 11	208/230-1	47	51	34¾	81.3	400
APH1342M41C*	3½	1,385	40,000	5,8,10,15	13 / 11	208/230-1	47	51	34¾	80.1	440
APH1348M41C*	4	1,690	47,000	5,8,10,15,20	13 / 11	208/230-1	47	51	42¾	79.1	485
APH1360M41C*	5	1,775	55,500	5,8,10,15,20	13 / 10.9	208/230-1	47	51	42¾	80.2	495

¹ BTU/h

Goodman Manufacturing Company, L.P., reserves the right to discontinue, or change at any time, specifications or designs without notice or without incurring obligations.

Warranty * Complete warranty details available from your local dealer or at www.amana-hac.com. To receive the 10-Year Parts Limited Warranty, online registration must be completed within 60 days of installation. Online registration is not required in California or Quebec.



Product Features

- Energy-efficient compressor with internal relief valve
- PSC blower motor; EEM blower motor on 3, 4 & 5-ton units
- Fully charged R-410A refrigerant system
- Convertible airflow: horizontal or downflow
- Copper tube/aluminum fin coils
- Totally enclosed, permanently lubricated condenser fan motor
- Electric heat kits available as field-installed options
- Heavy-gauge galvanized-steel cabinet with attractive Architectural Gray powder-paint finish
- When properly anchored, meets the 2010 Florida Building Code unit integrity requirements for hurricane-type winds (Anchor bracket kits available.)
- All-Aluminum evaporator coil



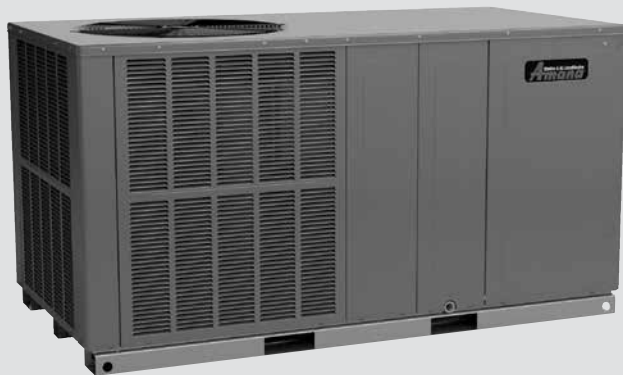
APH13H Heat Pump — 13 SEER / 11.0 EER / 7.7 HSPF

MODEL	NOMINAL RATINGS			ELECTRIC HEAT (kW)	VOLTAGE-PHASE	SEER / EER	DIMENSIONS			DBs	SHIP WEIGHT (LBS)
	TONS	CFM	HEATING ¹				W"	D"	H"		
APH1324H41C*	2	850	22,000	5, 8, 10	208/230-1	13.0 / 11.0	66½	34	30	76	325
APH1330H41C*	2½	1,050	27,400	5, 8, 10, 15	208/230-1	13.0 / 11.0	66½	34	30	76	325
APH1336H41C*	3	1,200	33,600	5, 8, 10, 15	208/230-1	13.0 / 11.0	66½	34	35	78	385
APH1342H41C*	3½	1,400	38,000	5, 8, 10, 15, 20	208/230-1	13.0 / 11.0	66½	34	35	78	385
APH1348H41D*	4	1,600	44,500	5, 8, 10, 15, 20	208/230-1	13.0 / 11.0	66½	34	38½	80	415
APH1360H41D*	5	1,850	54,500	5, 8, 10, 15, 20	208/230-1	13.0 / 11.0	66½	34	38½	80	415

¹ BTU/h

Goodman Manufacturing Company, L.P., reserves the right to discontinue, or change at any time, specifications or designs without notice or without incurring obligations.

Warranty * Complete warranty details available from your local dealer or at www.amana-hac.com. To receive the 10-Year Parts Limited Warranty, online registration must be completed within 60 days of installation. Online registration is not required in California or Quebec.



Product Features

- Energy-efficient compressor with internal relief valve
- R-410A chlorine-free refrigerant
- Copper tube/aluminum fin coil
- Totally enclosed, permanently lubricated condenser fan motor
- 5 kW-20 kW electric heat kits available as field-installed options
- AHRI Certified; ETL Listed
- Heavy-gauge galvanized-steel cabinet with attractive Architectural Gray powder-paint finish Fully insulated blower compartment Louvered condenser coil protection
- All-Aluminum evaporator coil



APG15 Gas-Electric — up to 15 SEER / 80% AFUE

MODEL	NOMINAL RATINGS		VOLTAGE/ PHASE/Hz	DIMENSIONS			DBS	SHIP WEIGHT (LBS)
	COOLING ¹	HEATING ²		W"	D"	H"		
APG152407041C*	2	69,000	208-230/1/60	47	51	34"	76	445
APG153009041C*	2½	92,000	208-230/1/60	47	51	34"	76	448
APG153709041C*	3	92,000	208-230/1/60	47	51	34"	76	514
APG154211541C*	3½	115,000	208-230/1/60	47	51	34"	78	517
APG154911541C*	4	115,000	208-230/1/60	47	51	34"	78	519
APG156014041C*	5	138,000	208-230/1/60	47	51	34"	78	523

¹ Tons ² BTU/h

Goodman Company, L.P., reserves the right to discontinue or change at any time specifications or designs without notice or without incurring obligations.

Warranty * Complete warranty details available from your local dealer or at www.amana-hac.com. To receive the Lifetime Heat Exchanger Limited Warranty, the Lifetime Compressor Limited Warranty (good for as long as you own your home) and 10-Year Parts Limited Warranty, online registration must be completed within 60 days of installation. Online registration is not required in California or Quebec.



Product Features

- Heavy-duty Million-Air® stainless-steel heat exchanger
- High-efficiency compressor with factory-installed sound blanket
- EEM (energy-efficient) blower motor
- Fully charged R-410A system
- Copper tube/aluminum fin coils
- Redundant two-stage gas valve; natural gas with easy conversion to propane
- Power-assisted combustion
- Direct-spark ignition system, including a microprocessor-based control for the entire ignition sequence
- All blower operation and all safety circuits complete with self-diagnostics
- Loss-of-charge protection and high-pressure switch
- All models comply with California Low NOx emissions standards
- All-Aluminum evaporator coil
- Fully insulated heavy-gauge, galvanized-steel cabinet with UV-resistant powder-paint finish
- Compressor grommets for vibration isolation
- All models fit in a standard-size pick-up truck
- One roof curb fits all units
- Convenient access panels
- Bottom 2" high base rails for easier handling



APG13M Gas-Electric — 13 SEER / 80% AFUE

MODEL	NOMINAL RATINGS			VOLTAGE/ PHASE/Hz	DIMENSIONS			DBS	SHIP WEIGHT (LBS)
	TONS	CFM	HEATING ¹		W"	D"	H"		
APG1324045M41B*	2	800	46,000	208-230/1/60	47	51	34¾	78	415
APG1324070M41B*	2	800	69,000	208-230/1/60	47	51	34¾	78	420
APG1330045M41B*	2½	1,000	46,000	208-230/1/60	47	51	34¾	78	416
APG1330070M41B*	2½	1,000	69,000	208-230/1/60	47	51	34¾	78	421
APG1336045M41B*	3	1,250	46,000	208-230/1/60	47	51	34¾	78	481
APG1336070M41B*	3	1,250	69,000	208-230/1/60	47	51	34¾	78	486
APG1336090M41B*	3	1,250	92,000	208-230/1/60	47	51	34¾	78	491
APG1342070M41D*	3½	1,300	69,000	208-230/1/60	47	51	42¾	78	485
APG1342090M41D*	3½	1,300	92,000	208-230/1/60	47	51	42¾	78	488
APG1348070M41D*	4	1,550	69,000	208-230/1/60	47	51	42¾	80	487
APG1348090M41D*	4	1,550	92,000	208-230/1/60	47	51	42¾	80	492
APG1348115M41D*	4	1,550	115,000	208-230/1/60	47	51	42¾	80	497
APG1360090M41D*	5	1,750	92,000	208-230/1/60	47	51	42¾	80	495
APG1360115M41D*	5	1,750	115,000	208-230/1/60	47	51	42¾	80	500
APG1360140M41D*	5	1,750	138,000	208-230/1/60	47	51	42¾	80	505

¹ BTU/h

Goodman Company, L.P., reserves the right to discontinue or change at any time specifications or designs without notice or without incurring obligations.

Warranty * Complete warranty details available from your local dealer or at www.amana-hac.com. To receive the Lifetime Heat Exchanger Limited Warranty, the Lifetime Compressor Limited Warranty (good for as long as you own your home) and 10-Year Parts Limited Warranty, online registration must be completed within 60 days of installation. Online registration is not required in California or Quebec.



Product Features

- Heavy-duty Million-Air® stainless-steel heat exchanger
- Energy-efficient compressor
- Copper tube/aluminum fin coil with flowrate expansion device
- Recirculating blower motor: PSC type on 2- to 3½-ton units; X-13 type on 4- and 5-ton units
- Fully charged R-410A system
- Redundant gas valve and easy conversion to propane
- Power-assisted combustion
- Direct spark ignition system includes a microprocessor-based control for the entire ignition sequence, all blower operation, and all safety circuits complete with self-diagnostics
- Comply with California Low NOx emission standards
- AHRI Certified; ETL Listed
- All-Aluminum evaporator coil
- High-quality UV-resistant powder-paint finish
- Horizontal or downflow application
- Convenient access panels
- Fully insulated cabinet
- Bottom, 2" high base rails for easier handling
- All models fit in a standard-size pick-up truck
- When properly anchored, meets the 2010 Florida Building Code unit integrity requirements for hurricane-type winds



APD14 Dual-Fuel — up to 14.5 SEER / 80% AFUE / up to 8.0 HSPF

MODEL	NOMINAL CAPACITIES (BTU/H)			VOLTAGE/ PHASE/Hz	DIMENSIONS			DBS	SHIP WEIGHT (LBS)
	TONS	HEATING	GAS HEAT		W"	D"	H"		
APD1424070M41B*	2	23,800	69,000	208-230/1/60	47	51	34¾	76	440
APD1430090M41B*	2½	28,000	92,000	208-230/1/60	47	51	34¾	76	440
APD1437090M41A*	3	32,600	92,000	208-230/1/60	47	51	34¾	76	460
APD1442115M41B*	3½	40,000	115,000	208-230/1/60	47	51	42¾	76	545
APD1448115M41B*	4	44,000	115,000	208-230/1/60	47	51	42¾	76	545

Goodman Company, L.P., reserves the right to discontinue, or change at any time, specifications or designs without notice or without incurring obligations.

Warranty * Complete warranty details available from your local dealer or at www.amana-hac.com. To receive the Lifetime Heat Exchanger Limited Warranty, the Lifetime Compressor Limited Warranty (good for as long as you own your home) and 10-Year Parts Limited Warranty, online registration must be completed within 60 days of installation. Online registration is not required in California or Quebec.



Product Features

- Combines cooling with heat pump and gas heating for optimal year-long performance
- High-efficiency Scroll compressor
- Durable, corrosion-resistant stainless-steel tubular heat exchanger
- Energy-efficient motor (EEM)
- Fully charged R-410A system
- Copper tube/aluminum fin coil
- Two-stage gas valve; natural gas with easy conversion to propane with accessory kit
- Power-assisted combustion
- Direct spark ignition system includes a microprocessor-based control for the entire ignition sequence
- All blower operation and all safety circuits complete with self-diagnostics
- Loss-of-charge protection
- All models comply with California Low NOx emission standards
- AHRI Certified; ETL Listed
- Fully insulated heavy-gauge, galvanized-steel cabinet with UV-resistant powder-paint finish
- Louvered metal panel condenser coil protection
- Horizontal or downflow application
- Convenient access panels
- Bottom, 2" high base rails for easy handling
- When properly anchored, meets the 2010 Florida Building Code unit integrity requirements for hurricane-type winds (Anchor bracket kits available.)



AVPTC — Multi-Position, Internal TXV Variable-Speed ECM Based Comfortnet™ Compatible Air Handler

MODEL	COOLING CAPACITY (BTU/H)	VOLTAGE-PHASE	DIMENSIONS			SERVICE VALVE		SHIP WEIGHT (LBS)
			W"	D"	H"	LIQUID"	SUCTION"	
AVPTC24B14	24,000	208/230	17½	21	45	¾	¾	100
AVPTC30C14	30,000	208/230	21	21	49	¾	¾	118
AVPTC36C14	36,000	208/230	21	21	49	¾	¾	118
AVPTC42D14	42,000	208/230	24½	21	58	¾	¾	125
AVPTC48C14	48,000	208/230	24½	21	58	¾	¾	155
AVPTC48D14	48,000	208/230	24½	21	58	¾	¾	167
AVPTC60D14	60,000	208/230	24½	21	58	¾	¾	167

Goodman Company, L.P., reserves the right to discontinue, or change at any time, specifications or designs without notice or without incurring obligations.

Warranty * Complete warranty details available from your local dealer or at www.amana-hac.com. To receive the 10-Year Parts Limited Warranty, online registration must be completed within 60 days of installation. Online registration is not required in California or Quebec.



The Amana® brand AVPTC Multi-Position, Variable-Speed Air Handler is part of our ComfortNet™ family of communicating units and optimized for use with the chlorine-free refrigerant, R-410A. This unit's ECM blower motor allows for a soft start and stop for quieter, more efficient operation and help reduce the cold blast of air upon heating start-up.

Product Features

- Internal factory-installed thermal expansion valves for cooling and heat pump applications
- Variable-speed ECM blower motor
- ComfortNet™ Communicating System compatible
- Auto configuration of the airflow and tonnage in communicating mode
- Provides constant CFM over a wide range of static pressure conditions independent of duct system
- CFM indicator
- Fault recall of six most recent faults
- Provides adjustable low CFM for efficient fan-only operation
- Improved humidity and comfort control
- Built-in compatibility with multi-stage heat pump and cooling applications
- All-aluminum evaporator coil
- Cabinet air leakage less than 2.0% at 1.0 inch H₂O when tested in accordance with ASHRAE standard 193
- Cabinet air leakage less than 1.4% at 0.5 inch H₂O when tested in accordance with ASHRAE standard 193
- 3 kW – 25 kW electric heater kits
- Horizontal or vertical configuration capabilities
- Rigid SmartFrame™ cabinet
- 21" depth for easier attic access
- DecaBDE-free thermoplastic drain pan with secondary drain connections
- Screw-less sides and back helps to reduce condensation when installed in humid locations
- Foil-faced insulation covers the internal casing to reduce cabinet condensation
- Galvanized, leather grain-embossed finish
- Glue-less cabinet insulation retention
- Tool-less filter access
- AHRI certified; ETL listed



ASPT — Multi-Position, Internal TXV Multi-Speed ECM Based Air Handler

MODEL	NOMINAL COOLING (Tons)	VOLTAGE	UNIT DIMENSIONS			CONNECTION SIZE		SHIP WEIGHT (LBS)
			W"	D"	H"	LIQUID"	SUCTION"	
ASPT24B14*	2	208/230	17½	21	45	¾	¾	100
ASPT30C14*	2½	208/230	21	21	49	¾	¾	118
ASPT36C14*	3	208/230	21	21	49	¾	¾	118
ASPT42D14*	3½	208/230	24½	21	58	¾	¾	167
ASPT48D14*	4	208/230	24½	21	58	¾	¾	167
ASPT60D14*	5	208/230	24½	21	58	¾	¾	167

¹ Tons * Airflow rate @.3 static

Goodman Company, L.P., reserves the right to discontinue, or change at any time, specifications or designs without notice or without incurring obligations.

Warranty * Complete warranty details available from your local dealer or at www.amana-hac.com. To receive the 10-Year Parts Limited Warranty, online registration must be completed within 60 days of installation. Online registration is not required in California or Quebec.



Product Features

- Internal factory-installed thermal expansion valves for cooling and heat pump applications
- Direct drive, multi-speed ECM blower motor
- All-aluminum evaporator coil
- Coil mounting track for quick repositioning
- Optimized for use with R-410A refrigerant
- Cabinet air leakage less than 2.0% at 1.0 inch H₂O when tested in accordance with ASHRAE standard 193
- Cabinet air leakage less than 1.4% at 0.5 inch H₂O when tested in accordance with ASHRAE standard 193
- 3 kW – 25 kW electric heater kits
- Horizontal or vertical configuration capabilities
- Rigid SmartFrame™ cabinet
- 21" depth for easier attic access
- DecaBDE-free thermoplastic drain pan with secondary drain connections
- Screw-less sides and back helps to reduce condensation when installed in humid locations
- Foil-faced insulation covers the internal casing to reduce cabinet condensation
- Galvanized, leather grain-embossed finish
- Glue-less cabinet insulation retention
- Tool-less filter access
- AHRI certified; ETL listed



The Amana® brand ASPT Multi-Position, Multi-Speed Air Handler features the SmartFrame cabinet with a 21" depth for easy attic access and includes a direct-drive, multi-speed motor for air volume variation. The ASPT may be installed in a variety of locations.



ASUF — Multi-Position Multi-Speed ECM Based Air Handler

MODEL	NOMINAL COOLING (Tons)	VOLTAGE	DIMENSIONS			SERVICE VALVE		SHIP WEIGHT (LBS)
			W"	D"	H"	LIQUID"	SUCTION"	
ASUF49C14*	4	208/230	21	21	49	3/8	3/8	125
ASUF59D14*	5	208/230	24½	21	58	3/8	3/8	167

¹ Tons *Airflow rate @.3 static

Goodman Company, L.P., reserves the right to discontinue, or change at any time, specifications or designs without notice or without incurring obligations.

Warranty * Complete warranty details available from your local dealer or at www.amana-hac.com. To receive the 10-Year Parts Limited Warranty, online registration must be completed within 60 days of installation. Online registration is not required in California or Quebec.



The Amana® brand ASUF Multi-Position Air Handler features the SmartFrame™ cabinet with a 21" depth for easy attic access. This unit includes a direct-drive, multi-speed ECM motor for air volume variation. The ASUF is ideal for new or retrofit applications and may be installed in a variety of locations.

Product Features

- Check flowrator for cooling and heat pump applications
- Direct drive, multi-speed ECM blower motor
- All-aluminum evaporator coil
- Coil mounting track for quick repositioning
- Optimized for use with R-410A refrigerant
- Cabinet air leakage less than 2.0% at 1.0 inch H₂O when tested in accordance with ASHRAE standard 193
- Cabinet air leakage less than 1.4% at 0.5 inch H₂O when tested in accordance with ASHRAE standard 193
- 3 kW – 25 kW electric heater kits
- Horizontal or vertical configuration capabilities
- Rigid SmartFrame™ cabinet
- 21" depth for easier attic access
- DecaBDE-free thermoplastic drain pan with secondary drain connections
- Screw-less sides and back helps to reduce condensation when installed in humid locations
- Foil-faced insulation covers the internal casing to reduce cabinet condensation
- Galvanized, leather grain-embossed finish
- Glue-less cabinet insulation retention
- Tool-less filter access
- AHRI certified; ETL listed

ARPT — Multi-Position, Internal TXV, Multi-Speed PSC Motor Air Handler

MODEL	NOMINAL COOLING (Tons)	VOLTAGE	DIMENSIONS			SERVICE VALVE		SHIP WEIGHT (LBS)
			W"	D"	H"	LIQUID"	SUCTION"	
ARPT24B14*	2	208/230	17½	21	45	¾	¾	99
ARPT30B14*	2½	208/230	17½	21	45	¾	¾	110
ARPT36C14*	3	208/230	21	21	49	¾	¾	130
ARPT36D14*	3	208/230	24½	21	58	¾	¾	130
ARPT42D14*	3½	208/230	24½	21	58	¾	¾	147
ARPT48D14*	4	208/230	24½	21	58	¾	¾	157
ARPT60D14*	5	208/230	24½	21	58	¾	¾	159

¹ Tons *Airflow rate @.3 static

Goodman Company, L.P., reserves the right to discontinue, or change at any time, specifications or designs without notice or without incurring obligations.

Warranty * Complete warranty details available from your local dealer or at www.amana-hac.com. To receive the 10-Year Parts Limited Warranty, online registration must be completed within 60 days of installation. Online registration is not required in California or Quebec.



Product Features

- Internal factory-installed thermal expansion valves for cooling and heat pump applications
- Direct drive, multi-speed PSC blower motor
- All-aluminum evaporator coil
- Coil mounting track for quick repositioning
- Optimized for use with R-410A refrigerant
- Cabinet air leakage less than 2.0% at 1.0 inch H₂O when tested in accordance with ASHRAE standard 193
- Cabinet air leakage less than 1.4% at 0.5 inch H₂O when tested in accordance with ASHRAE standard 193
- 3 kW – 25 kW electric heater kits
- Horizontal or vertical configuration capabilities
- Rigid SmartFrame™ cabinet
- 21" depth for easier attic access
- DecaBDE-free thermoplastic drain pan with secondary drain connections
- Screw-less sides and back helps to reduce condensation when installed in humid locations
- Foil-faced insulation covers the internal casing to reduce cabinet condensation
- Galvanized, leather grain-embossed finish
- Glue-less cabinet insulation retention
- Tool-less filter access
- AHRI certified; ETL listed



The Amana® brand ARPT Multi-Position, Multi-Speed Air Handler features the SmartFrame cabinet with a 21" depth for easy attic access and includes a direct-drive, multi-speed motor for air volume variation. The ARPT may be installed in a variety of locations.



ARUF — Multi-Position Multi-speed PSC Motor Air Handler

MODEL	NOMINAL COOLING (Tons)	VOLTAGE	UNIT DIMENSIONS			CONNECTION SIZE		SHIP WEIGHT (LBS)
			W"	D"	H"	LIQUID"	SUCTION"	
ARUF18B14*	1½	208/230	17½	21	45	¾	¾	96
ARUF24B14*	2	208/230	17½	21	45	¾	¾	96
ARUF30B14*	2½	208/230	17½	21	45	¾	¾	102
ARUF36C14*	3	208/230	21	21	49	¾	¾	116
ARUF42C14*	3½	208/230	21	21	49	¾	¾	118
ARUF48D14*	4	208/230	24½	21	58	¾	¾	147
ARUF60D14*	5	208/230	24½	21	58	¾	¾	151

¹Tons *Airflow rate @.3 static

Goodman Company, L.P., reserves the right to discontinue, or change at any time, specifications or designs without notice or without incurring obligations.

Warranty * Complete warranty details available from your local dealer or at www.amana-hac.com. To receive the 10-Year Parts Limited Warranty, online registration must be completed within 60 days of installation. Online registration is not required in California or Quebec.



The Amana® brand ARUF Multi-Position Air Handler features the SmartFrame cabinet with a 21" depth for easy attic access. This unit includes a check flowrator expansion device as well as direct-drive, multi-speed motor for air volume variation. The ARUF is ideal for new or retrofit applications and may be installed in a variety of locations.

Product Features

- Check flowrator for cooling and heat pump applications
- Direct drive, multi-speed PSC blower motor
- All-aluminum evaporator coil
- Coil mounting track for quick repositioning
- Optimized for use with R-410A refrigerant
- Cabinet air leakage less than 2.0% at 1.0 inch H₂O when tested in accordance with ASHRAE standard 193
- Cabinet air leakage less than 1.4% at 0.5 inch H₂O when tested in accordance with ASHRAE standard 193
- 3 kW – 25 kW electric heater kits
- Horizontal or vertical configuration capabilities
- Rigid SmartFrame™ cabinet
- 21" depth for easier attic access
- DecaBDE-free thermoplastic drain pan with secondary drain connections
- Screw-less sides and back helps to reduce condensation when installed in humid locations
- Foil-faced insulation covers the internal casing to reduce cabinet condensation
- Galvanized, leather grain-embossed finish
- Glue-less cabinet insulation retention
- Tool-less filter access
- AHRI certified; ETL listed



MBVC / MBR — Multi-Position Variable-Speed ECM Based ComfortNet™ Compatible Modular Blower

MODEL	VOLTAGE	DIMENSIONS			SHIP WEIGHT (LBS)
		W"	D"	H"	
MBVC1200AA-1	208/230	17½	21	26	67
MBVC1600AA-1	208/230	21	21	30	80
MBVC2000AA-1	208/230	24½	21	30	86
MBR0800AA-1	208/230	17½	21	26	62
MBR1200AA-1	208/230	17½	21	26	62
MBR1600AA-1	208/230	21	21	30	73
MBR2000AA-1	208/230	24½	21	30	84

Goodman Company, L.P., reserves the right to discontinue, or change at any time, specifications or designs without notice or without incurring obligations.

Warranty * Complete warranty details available from your local dealer or at www.amana-hac.com. To receive the 10-Year Parts Limited Warranty, online registration must be completed within 60 days of installation. Online registration is not required in California or Quebec.



Product Features: MBVC

- Variable-speed ECM blower motor
- Direct drive, multi-speed PSC blower motor
- ComfortNet™ Communicating System compatible
- Auto configuration of the airflow and tonnage in communicating mode
- Provides constant CFM over a wide range of static pressure conditions independent of duct system
- CFM indicator
- Fault recall of six most recent faults
- Provides adjustable low CFM for efficient fan-only operation
- Improved humidity and comfort control
- Built-in compatibility with multi-stage heat pump and cooling applications
- 3 kW – 21 kW electric heat kits
- Blower section usable as electric heater
- Horizontal or vertical configuration capabilities
- 21" depth for easier attic access
- Foil-faced insulation covers the internal casing to reduce cabinet condensation
- Galvanized, leather grain-embossed finish
- AHRI certified; ETL listed

Product Features: MBR

- Direct drive, multi-speed PSC blower motor
- 3 kW – 21 kW electric heat kits
- Blower section usable as electric heater
- Horizontal or vertical configuration capabilities
- 21" depth for easier attic access
- Foil-faced insulation covers the internal casing to reduce cabinet condensation
- Galvanized, leather grain-embossed finish
- AHRI certified; ETL listed



The Amana® brand MBVC/MBR modular blowers are tailor-made for exceptional energy efficiency. Now fully compatible with the ComfortNet™ line of communicating equipment, the MBVC's ECM blower motor assemblies increase both installation and application flexibility. Both units can be matched with cased coils for upflow, downflow, and horizontal applications.



AWUF — Wall-Mount Air Handler

MODEL	NOMINAL COOLING (TONS)	ELECTRIC HEAT (kW)	VOLTAGE	DIMENSIONS			SERVICE VALVE		SHIP WEIGHT (LBS)
				W"	D"	H"	LIQUID"	SUCTION"	
AWUF180316B	1½	3	240/208	20 ³ / ₁₆	16 ¹ / ₈	36	³ / ₈	⁵ / ₈	84
AWUF180516B	1½	5	240/208	20 ³ / ₁₆	16 ¹ / ₈	36	³ / ₈	⁵ / ₈	84
AWUF180816B	1½	8	240/208	20 ³ / ₁₆	16 ¹ / ₈	36	³ / ₈	⁵ / ₈	84
AWUF240316B	2	3	240/208	20 ³ / ₁₆	16 ¹ / ₈	36	³ / ₈	⁵ / ₈	84
AWUF240516B	2	5	240/208	20 ³ / ₁₆	16 ¹ / ₈	36	³ / ₈	⁵ / ₈	84
AWUF240816B	2	8	240/208	20 ³ / ₁₆	16 ¹ / ₈	36	³ / ₈	⁵ / ₈	84
AWUF241016B	2	10	240/208	20 ³ / ₁₆	16 ¹ / ₈	36	³ / ₈	⁵ / ₈	84
AWUF300316B	2½	3	240/208	24	21	36	³ / ₈	⁵ / ₈	93
AWUF300516B	2½	5	240/208	24	21	36	³ / ₈	⁵ / ₈	109
AWUF300816B	2½	8	240/208	24	21	36	³ / ₈	⁵ / ₈	109
AWUF301016B	2½	10	240/208	24	21	36	³ / ₈	⁵ / ₈	109
AWUF310516A*	1½ to 2½	5	240/208	24	21	36	³ / ₈	⁵ / ₈	109
AWUF310816A*	1½ to 2½	8	240/208	24	21	36	³ / ₈	⁵ / ₈	109
AWUF321016A*	1½ to 2½	10	240/208	24	21	36	³ / ₈	⁵ / ₈	109
AWUF360516B	2½ to 3	5	240/208	24	21	36	³ / ₈	⁵ / ₈	96
AWUF360816B	2½ to 3	8	240/208	24	21	36	³ / ₈	⁵ / ₈	96
AWUF361016B	2½ to 3	10	240/208	24	21	36	³ / ₈	⁵ / ₈	96
AWUF370516B	2½ to 3	5	240/208	24	21	36	³ / ₈	⁵ / ₈	96
AWUF370816B	2½ to 3	8	240/208	24	21	36	³ / ₈	⁵ / ₈	96
AWUF371016B	2½ to 3	10	240/208	24	21	36	³ / ₈	⁵ / ₈	96

Goodman Company, L.P., reserves the right to discontinue or change at any time specifications or designs without notice or without incurring obligations.

Warranty * Complete warranty details available from your local dealer or at www.amana-hac.com. To receive the 10-Year Parts Limited Warranty, online registration must be completed within 60 days of installation and the unit must be installed in conjunction with a new split system air conditioner or heat pump to which it is properly matched by the installer. Online registration is not required in California or Quebec.



The Amana® brand AWUF Air Handler is designed to be vertically wall- or stud-mounted. This unit features a check flowrater and direct-drive, multi-speed motor. The AWUF is housed in a fully insulated, galvanized-steel cabinet.

Product Features

- For use with R-410A refrigerant
- Equipped with a check flowrater for cooling-only and heat pump operation
- Direct-drive, multi-speed motor allows air volume variation for heating/cooling
- Sequence-controlled, rust-resistant nickel chromium heating elements
- Factory-installed pull-type disconnect
- Aluminum tubing coils on all models
- AHRI Certified; ETL Listed
- Thermoplastic drain pan with bottom primary and secondary drain connections
- Built-in filter rack (filter included)
- Large chassis (2½- and 3-ton units) – front return only
- Small chassis (1½- and 2-ton units) – front or bottom return
- Wall-hanging bracket provided

ACNF — Ceiling-Mount Air Handlers

MODEL	COOLING CAPACITY (TONS)	ELECTRIC HEAT (KW)	VOLTAGE (VAC)	DIMENSIONS			REFRIGERANT LINE CONNECTION SIZE		SHIP WEIGHT (LBS)
				W"	D"	H"	LIQUID"	SUCTION"	
ACNF180016	1½	0	208/230	37¼	21	10	¾	¾	59
ACNF180516	1½	5	208/230	37¼	21	10	¾	¾	59
ACNF180616	1½	6	208/230	37¼	21	10	¾	¾	59
ACNF180816	1½	8	208/230	37¼	21	10	¾	¾	59
ACNF240016	2	0	208/230	43¼	21	10	¾	¾	69
ACNF240516	2	5	208/230	43¼	21	10	¾	¾	69
ACNF240616	2	6	208/230	43¼	21	10	¾	¾	69
ACNF240816	2	8	208/230	43¼	21	10	¾	¾	69
ACNF241016	2	10	208/230	43¼	21	10	¾	¾	69
ACNF300016	2½	0	208/230	49¼	21	10	¾	¾	79
ACNF300516	2½	5	208/230	49¼	21	10	¾	¾	79
ACNF300616	2½	6	208/230	49¼	21	10	¾	¾	79
ACNF300816	2½	8	208/230	49¼	21	10	¾	¾	79
ACNF301016	2½	10	208/230	49¼	21	10	¾	¾	79

Goodman Company, L.P., reserves the right to discontinue, or change at any time, specifications or designs without notice or without incurring obligations.

Warranty * Complete warranty details available from your local dealer or at www.amana-hac.com. To receive the 10-Year Parts Limited Warranty, online registration must be completed within 60 days of installation and the unit must be installed in conjunction with a new split system air conditioner or heat pump to which it is properly matched by the installer. Online registration is not required in California or Quebec.



Product Features

- Suitable for use with refrigerants R-410A and R-22
- Check flowrate for heat pump and cooling-only applications
- All-Aluminum tube/aluminum fin coil
- Direct-drive, resilient-mount, multi-speed motor
- Sequence-controlled and rust-resistant nickel chromium heating elements
- High-efficiency evaporator coil
- Quiet operation
- Available with and without heat
- AHRI Certified
- ETL Listed
- Primary/secondary drain connection in a high-temperature plastic drain pan
- Suitable for free-return installation (non-ducted return air)
- Galvanized-steel construction
- Factory-installed pull-type disconnect
- Easy service access



The Amana® brand ACNF Electric Heat Air Handler is designed to be ceiling-mounted. This unit features a check flowrate and direct-drive, resilient-mount, multi-speed motor. The ACNF has galvanized-steel construction and quiet operation.



CAPT — Cased Indoor “A” Coil, Internal TXV, Upflow and Downflow, 1½ to 5 Tons

MODEL	CABINET DIMENSIONS			NOMINAL TONS	CONNECTION		SHIP WEIGHT (LBS)
	W”	D”	H”		LIQUID”	SUCTION”	
CAPT3131B4	17½	21	22	2½	¾	¾	46
CAPT3131C4	21	21	22	2½	¾	¾	50
CAPT3743C4	21	21	30	3-3½	¾	¾	63
CAPT3743D4	24½	21	30	3-3½	¾	¾	75
CAPT4961C4	21	21	30	4-5	¾	¾	73
CAPT4961D4	24½	21	30	4-5	¾	¾	76

Goodman Company, L.P., reserves the right to discontinue, or change at any time, specifications or designs without notice or without incurring obligations.

Warranty * Complete warranty details available from your local dealer or at www.amana-hac.com. To receive the 10-Year Parts Limited Warranty, online registration must be completed within 60 days of installation and the unit must be installed in conjunction with a new split system air conditioner or heat pump to which it is properly matched by the installer. Online registration is not required in California or Quebec.



Product Features

- Optimized for use with R-410a refrigerant
- Suitable for use with R-410a or R-22 refrigerant
- Internal factory-installed thermal expansion valves for cooling and heat pump applications
- Check flowrator for cooling and heat pump applications
- Vertical configuration
- Horizontal configuration
- 21” depth for easier attic access
- Split seam front for easy access
- Foil-faced insulation covers the internal casing to reduce cabinet condensation
- Galvanized, leather grain-embossed finish
- All-aluminum evaporator coil
- Rust resistant, thermoplastic drain pans featuring a low water-retention design
- DecaBDE-free thermoplastic drain pan with secondary drain connections
- UV-resistant drain pan
- AHRI certified; ETL listed

The Amana® brand All-Aluminum CAPT Cased coils with a factory installed TXV is made for split system air conditioners and heat pumps. This unit features aluminum tubing and corrugated aluminum fin coils and rust-resistant, high-temperature, thermoplastic drain pans. The CAPT cabinet is painted Architectural Gray.

CAPF — Cased Indoor “A” Coil, Upflow and Downflow, 1½ to 5 Tons

MODEL	DIMENSIONS			NOMINAL TONS	CONNECTION		SHIP WEIGHT (LBS)
	W"	D"	H"		LIQUID"	SUCTION"	
CAPF1824A6	14	21	18	1½-2	¾	¾	32
CAPF1824B6	17½	21	18	1½-2	¾	¾	35
CAPF1824C6	21	21	22	1½-2	¾	¾	42
CAPF3030A6	14	21	22	2½	¾	¾	41
CAPF3030B6	17½	21	22	2½	¾	¾	43
CAPF3030C6	21	21	22	2½	¾	¾	44
CAPF3030D6	24½	21	22	2½	¾	¾	52
CAPF3131B6	17½	21	22	2½	¾	¾	46
CAPF3131C6	21	21	26	2½	¾	¾	50
CAPF3636A6	14	21	22	3	¾	¾	40
CAPF3636B6	17½	21	22	3	¾	¾	44
CAPF3636C6	21	21	22	3	¾	¾	53
CAPF3636D6	24½	21	22	3	¾	¾	51
CAPF3642C6	21	21	22	3-3½	¾	¾	49
CAPF3642D6	24½	21	22	3-3½	¾	¾	52
CAPF3743C6	21	21	30	3-3½	¾	¾	63
CAPF3743D6	24½	21	30	3-3½	¾	¾	75
CAPF4860C6	21	21	30	4-5	¾	¾	65
CAPF4860D6	24½	21	30	4-5	¾	¾	68
CAPF4961C6	21	21	30	4-5	¾	¾	73
CAPF4961D6	24½	21	30	4-5	¾	¾	76

Goodman Company, L.P., reserves the right to discontinue, or change at any time, specifications or designs without notice or without incurring obligations.

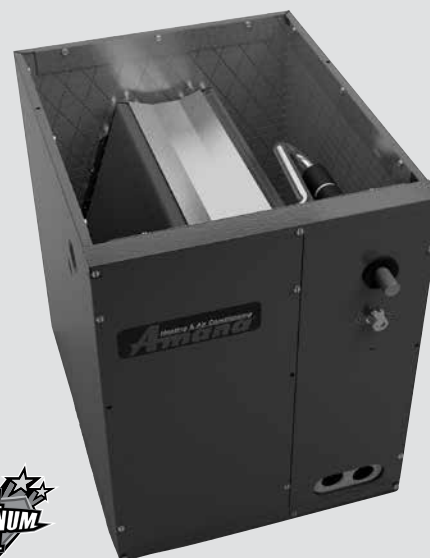
Warranty * Complete warranty details available from your local dealer or at www.amana-hac.com. To receive the 10-Year Parts Limited Warranty, online registration must be completed within 60 days of installation and the unit must be installed in conjunction with a new split system air conditioner or heat pump to which it is properly matched by the installer. Online registration is not required in California or Quebec.



Product Features

- Suitable for use with R-410a or R-22 refrigerant
- Check flowrator for cooling and heat pump applications
- Vertical configuration
- 21" depth for easier attic access
- Split seam front for easy access
- Foil-faced insulation covers the internal casing to reduce cabinet condensation
- Galvanized, leather grain-embossed finish
- All-aluminum evaporator coil
- Rust resistant, thermoplastic drain pans featuring a low water-retention design
- DecaBDE-free thermoplastic drain pan with secondary drain connections
- UV-resistant drain pan
- AHRI certified; ETL listed

The Amana® brand All-Aluminum CAPF Cased Upflow/Downflow Indoor Coils are made for split system air conditioners and heat pumps. This unit features aluminum tubing and corrugated aluminum fin coils and rust-resistant, high-temperature, thermoplastic drain pans. The CAPF cabinet is painted Architectural Gray.



CHPF — Cased Indoor “A” Coil, Horizontal, 1½ to 5 Tons

MODEL	CABINET DIMENSIONS			NOMINAL TONS	CONNECTION		SHIP WEIGHT (LBS)
	W"	D"	H"		LIQUID"	SUCTION"	
CHPF1824A6	21½	26	14	1½ to 2	¾	¾	36
CHPF2430B6	21½	26	17½	2 to 2½	¾	¾	55
CHPF3636B6	21½	26	17½	3	¾	¾	50
CHPF3642C6	21½	26	21	3 to 3½	¾	¾	63
CHPF3642D6	21½	26	24½	3 to 3½	¾	¾	66
CHPF3743C6	21½	26	21	3 to 3½	¾	¾	63
CHPF3743D6	21½	26	24½	3 to 3½	¾	¾	63
CHPF4860D6	21½	26	24½	4 to 5	¾	¾	77

Goodman Company, L.P., reserves the right to discontinue, or change at any time, specifications or designs without notice or without incurring obligations.

Warranty * Complete warranty details available from your local dealer or at www.amana-hac.com. To receive the 10-Year Parts Limited Warranty, online registration must be completed within 60 days of installation and the unit must be installed in conjunction with a new split system air conditioner or heat pump to which it is properly matched by the installer. Online registration is not required in California or Quebec.



Product Features

- Suitable for use with R-410a or R-22 refrigerant
- Check flowrator for cooling and heat pump applications
- Horizontal configuration
- 21" depth for easier attic access
- Split seam front for easy access
- Foil-faced insulation covers the internal casing to reduce cabinet condensation
- Galvanized, leather grain-embossed finish
- All-aluminum evaporator coil
- Rust resistant, thermoplastic drain pans featuring a low water-retention design
- DecaBDE-free thermoplastic drain pan with secondary drain connections
- UV-resistant drain pan
- AHRI certified; ETL listed

The Amana® brand All-Aluminum CHPF Cased Horizontal “A” Coils are made for split system air conditioners and heat pumps. Each coil is made of quality galvanized steel with a painted, leather grain-embossed finish. This cabinet is painted Architectural Gray.

CAUF — Uncased Indoor “A” Coil, Upflow, 1½ to 5 Tons

MODEL	DIMENSIONS		NOMINAL TONS	CONNECTION		SHIP WEIGHT (LBS)
	W"	H"		LIQUID"	SUCTION"	
CAUF1824A6	13	16¼	1½-2	¾	¾	18
CAUF1824B6	16½	16⅝	1½-2	¾	¾	23
CAUF1824C6	20	16⅝	1½-2	¾	¾	27
CAUF3030A6	13	20⅞	2½	¾	¾	25
CAUF3030B6	16½	18¾	2½	¾	¾	22
CAUF3030C6	20	17⅞	2½	¾	¾	25
CAUF3030D6	23	17⅞	2½	¾	¾	32
CAUF3131B6	16½	20⅞	2½	¾	¾	27
CAUF3131C6	20	20	2½	¾	⅞	31
CAUF3636A6	13	19½	3	¾	⅞	30
CAUF3636B6	16½	19⅞	3	¾	⅞	25
CAUF3636C6	20	19⅞	3	¾	⅞	28
CAUF3636D6	23	19⅞	3	¾	⅞	36
CAUF3642C6	20	19	3-3½	¾	⅞	29
CAUF3642D6	23	19⅞	3-3½	¾	⅞	34
CAUF3743C6	20	28⅞	3-3½	¾	⅞	46
CAUF3743D6	23	27⅞	3-3½	¾	⅞	43
CAUF4860C6	20	28	4-5	¾	⅞	48
CAUF4860D6	23	28	4-5	¾	⅞	39
CAUF4961C6	20	28	4-5	¾	⅞	54
CAUF4961D6	23	27	4-5	¾	⅞	59

Goodman Company, L.P., reserves the right to discontinue, or change at any time, specifications or designs without notice or without incurring obligations.

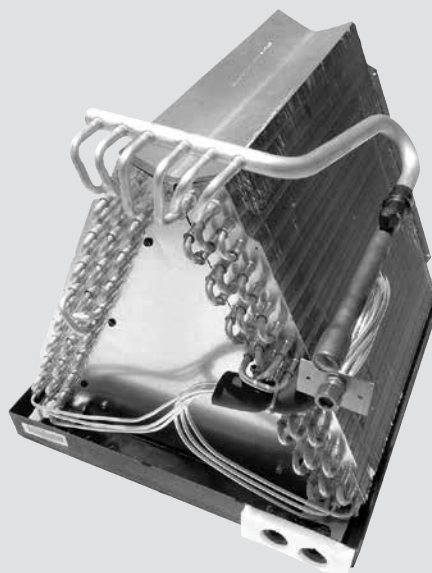
Warranty * Complete warranty details available from your local dealer or at www.amana-hac.com. To receive the 10-Year Parts Limited Warranty, online registration must be completed within 60 days of installation and the unit must be installed in conjunction with a new split system air conditioner or heat pump to which it is properly matched by the installer. Online registration is not required in California or Quebec.



Product Features

- Suitable for use with R-410a or R-22 refrigerant
- Check flowrator for cooling and heat pump applications
- Vertical configuration
- 21” depth for easier attic access
- All-aluminum evaporator coil
- Rust resistant, thermoplastic drain pans featuring a low water-retention design
- DecaBDE-free thermoplastic drain pan with secondary drain connections
- UV-resistant drain pan
- AHRI certified; ETL listed

The Amana® brand All-Aluminum CAUF Uncased Upflow/Downflow Indoor Coils are made for split system air conditioners and heat pumps. This coil features aluminum tubing and corrugated aluminum fins and rust-resistant, high-temperature, thermoplastic drain pans.

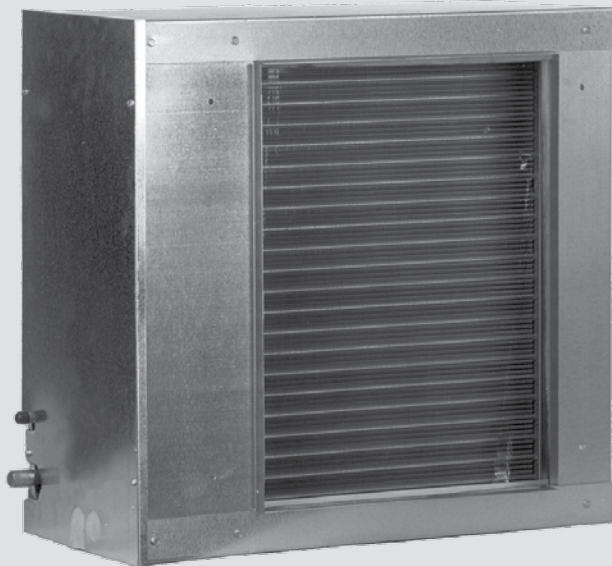


CSCF — Cased Indoor Slab Coil, Horizontal, 1½ to 5 Tons

MODEL	CABINET DIMENSIONS			PLENUM OPENING		CAPACITY (TONS)	CONNECTION SIZE		SHIP WEIGHT (LBS)
	W"	D"	H"	W"	H"		LIQUID"	SUCTION"	
CSCF1824N6	25½	12	25	16	21	1½-2	¾	¾	43
CSCF3036N6	33½	12	25	24	21	2½-3	¾	¾	53
CSCF3642N6	39½	12	25	30	21	3-3½	¾	¾	43
CSCF4860N6	39½	12	25	30	21	4-5	¾	¾	60

Goodman Company, L.P., reserves the right to discontinue or change at any time specifications or designs without notice or without incurring obligations.

Warranty * Complete warranty details available from your local dealer or at www.amana-hac.com. To receive the 10-Year Parts Limited Warranty, online registration must be completed within 60 days of installation and the unit must be installed in conjunction with a new split system air conditioner or heat pump to which it is properly matched by the installer. Online registration is not required in California or Quebec.



Product Features

- Suitable for use with R-410a or R-22 refrigerant
- Check flowrator for cooling and heat pump applications
- Horizontal configuration
- Foil-faced insulation covers the internal casing to reduce cabinet condensation
- All-aluminum evaporator coil
- Rust resistant, thermoplastic drain pans featuring a low water-retention design
- DecaBDE-free thermoplastic drain pan with secondary drain connections
- UV-resistant drain pan
- AHRI certified; ETL listed



The Amana® brand CSCF Horizontal Slab Evaporator Coils are made for split system air conditioners and heat pumps. This unit features a check flowrator expansion device and rust-resistant, high-temperature, thermoplastic drain pan. Each coil's cabinet has a quality, galvanized-steel finish.

ComfortNet™ High-Definition Communicating Control & System — CTK04

The ComfortNet™ brand programmable or non-programmable touch-screen high-definition digital control for residential and light commercial applications works with our Amana® brand Comfort-Net-ready heating and cooling systems.

Product Features

- Automatic system configuration ensures system is working at its maximum efficiency
- Simplified control wiring
- Advanced Active diagnostics
- Advanced modulation control
- Heat pump balance point
- Auxiliary heat lock-out
- Continuous fan speed (high, med, low)
- Full color display
- Window frost / condensation protection
- Southern dehumidification control
- Indoor temperature averaging
- Device naming option
- User interaction log (historical)
- Outdoor temperature display
- Outdoor humidity display (with Redlink)
- Advanced staging control
- Heat and cool cycle rate adjustability
- Energy management recovery
- Wireless accessory capability
- Internet accessibility
- Maintenance reminders: Air filter, UV lamp, Humidifier pad, Electronic air cleaner
- Continuous backlight
- Adjustable backlight & contrast
- Temperature display adjustment
- Humidity display adjustment
- Temperature display °F or °C
- Max / min temperature / humidity alerts

ComfortNet™ Family of Products

- Air Conditioners: ASXC18, ASXC16
- Heat Pumps: ASZC18, ASZC16
- Gas Furnaces: AMVM96, ACVM96, AMVC95, ACVC95, AMVC8, ADVC8
- Air Handlers: AVPTC, MBVC



* Complete warranty details available from your local dealer or at www.amana-hac.com. To receive the 10-Year Control Limited Warranty, the control must be installed in conjunction with a new furnace or air handler containing a communicating system that is compatible with the control and, if that furnace/air handler is a Goodman® or Amana® brand unit, that furnace/air handler must have been registered online within 60 days of installation of the furnace/air handler. Failure by Quebec or California residents to have registered a Goodman® or Amana® brand furnace/air handler does not diminish their warranty rights.

Programming

- Seven-day programmable system
- Auto heat / cool change-over option: automatically switches between heating and cooling programs
- Customizable home screen
- Dehumidification control
- Independent humidification control
- Airflow speed trimming adjustment
- Intuitive installer menus
- Four steps per daily schedule sequence
- Simultaneous heat and cool program storage
- Energy Management Recovery program (EMR)
- Program-loss, start-up temperature
- USB uploadable dealer information and set-point profiles

ComfortNet™ High-Definition Communicating Control & System — CTK02

The ComfortNet™ brand programmable or non-programmable touch-screen high-definition digital control for residential and light commercial applications works with our Amana® brand Comfort-Net-ready heating and cooling systems.



Product Features

- Automatic system configuration ensures system is working at its maximum efficiency
- Simplified control wiring
- Advanced Active diagnostics
- Advanced modulation control
- Removable faceplate (gray and white included)
- Adjustable maximum heat and cool settings
- Extra-large touchpad for easy operation
- Easy-to-read character size
- Advanced diagnostics and fault code display
- Fahrenheit/Celsius display
- Optional continuous LED back-lighted display
- Maximum four-wire low-voltage control wiring connection
- Only two wires required to outdoor unit when used with optional outdoor transformer
- Auto-setup and configuration of dipswitches
- Hard-wired with battery back-up
- Meets California Building Code, Title 24
- Selectable continuous fan speeds
- Fast or slow heating cycle anticipation
- Fast energizing between stages of heat and cool
- Active system diagnostics
- Exclusive “Call for Service” diagnostic indicator
- Dual-fuel heat pump compatible
- Audio beep alert on key press
- Humidifier pad maintenance reminder
- Air filter maintenance reminder
- UV lamp maintenance reminder

ComfortNet™ Family of Products

- Air Conditioners: ASXC18, ASXC16
- Heat Pumps: ASZC18, ASZC16
- Gas Furnaces: AMVM96, ACVM96, AMVC95, ACVC95, AMVC8, ADVC8
- Air Handlers: AVPTC, MBVC

* Complete warranty details available from your local dealer or at www.amana-hac.com. To receive the 10-Year Control Limited Warranty, the control must be installed in conjunction with a new furnace or air handler containing a communicating system that is compatible with the control and, if that furnace/air handler is a Goodman® or Amana® brand unit, that furnace/air handler must have been registered online within 60 days of installation of the furnace/air handler. Failure by Quebec or California residents to have registered a Goodman® or Amana® brand furnace/air handler does not diminish their warranty rights.

- Humidifier pad replacement reminder
- Adjustable brightness and key-pad adjustment
- Low-profile design

Programming

- Seven-day programmable system
- Auto heat / cool change-over option: automatically switches between heating and cooling programs
- Customizable home screen
- Dehumidification control
- Independent humidification control
- Airflow speed trimming adjustment
- Intuitive installer menus
- Four steps per daily schedule sequence
- Simultaneous heat and cool program storage
- Energy Management Recovery program (EMR)
- Program-loss, start-up temperature
- USB uploadable dealer information and set-point profiles

Touchscreen Thermostats for Residential & Light Commercial Applications



* Complete warranty details available from your local dealer or at www.amana-hac.com.

Features

- Customizable wallpaper and slide show
- Built-in nature and holiday wallpaper themes
- Customizable service alerts
- “Simple as you want” operation with easy-to-read display
- TouchScreen assistant for fast and easy programming
- SD memory card for easy importing and exporting of thermostat data, including copying data between thermostats
- At-a-glance screen lets users see temperature and heating/cooling status
- Programmable fan and night-time dimmer
- 7-Day programmable scheduler
- Switchable programmable or non-programmable
- Up to 4 heat & 2 cool stages
- Automatic daylight savings adjustments
- 7-Day energy usage graph
- Passcode security for screen lock and set-point limits
- Multiple languages: English, Spanish, and French
- Gas/electric or heat pump control
- Universal compatibility including dual fuel

Display

- Large 12” square touch screen display: largest in the industry
- Extra-large touch keys for easy operation
- Blue, lighted display for easier low-light viewing
- Larger, easy-to-read character size
- Extra-large touch keys for easy operation
- Clean, uncluttered touch screen display offers easier navigation

Programming

- Universal: choice of 7 day, 5/1/1 day programmable or non-programmable (installer selectable)
- Four time & 4 temperature settings per program: (2 setbacks) heat and cool, or selectable; 2 time & 2 temperature settings (1 setback)
- Energy savings up to 33%
- Pre-programmed schedule: simplifies time & temperature programming

Performance

- Battery-powered or hard-wired with battery back-up
- Selectable energy management recovery
- Meets California Building Code, Title 24
- Fast (FA) or slow (SL) heating cycle anticipation
- Exclusive “Call for Service” diagnostic indicator
- Compressor lock-out protection
- Millivolt-compatible
- Electric heat option
- Three-wire zone valve
- Audible feedback
- Remote sensing indoor / outdoor
- Programmable fan / circulator fan cycling
- Automatic daylight savings option
- Dual-fuel heat pump control (TSTAT ATS3275)

Digital Thermostats for Residential Applications

The Amana® brand programmable and non-programmable Digital Thermostats work with Amana® brand heating and cooling systems, and are compatible with a variety of accessories.



Premium Thermostats

Premium Line Regular Features

- Heat Pump compatible
- Auto-changeover
- Large easy-to-read back-lit display
- Can be configured for programmable or non-programmable mode
- Can be configured for manual or auto-changeover
- LED indicator glows green or red to indicate cooling or heating
- Service filter and UV light indicator
- Fahrenheit or Celsius display
- Non-Volatile memory
- Keypad lock
- **TSTATA2111**
1-Day Programmable Digital Thermostat
 - 2 Heat & 1 Cool for use with gas/electric
 - 1-Day Programmable with up to 4 time periods
 - Heat pump, electric & hydronic heat systems
- **TSTATA3272**
7-Day Programmable Digital Thermostat
 - Controls up to 3 Heat & 2 Cool
 - Controls or monitors a 2nd sensor
 - Hi/Low outdoor temps of the day
 - Programmable Fan
 - Energy Saver
- **TSTATA3273**
7-Day Programmable Digital Thermostat
All of the TSTAT A3272 features plus:
 - Programmable output
 - Built in humidity module
 - Can average with one remote sensor
 - Dual fuel capable
 - Reheat capable
 - Dry contact equipped
 - Drain pan alert ready
 - Energy Watch



Value Line Thermostats

Value Line Regular Features

- Battery or system powered
- Compatible with 2-, 3-, or 4-wire systems
- Fahrenheit or Celsius
- Large, easy-to-read digital display
- Extremely simple to operate
- **TSTATA1152-2**
5+2 Day Programmable Digital Thermostat
 - Stages: 1 Heat & 1 Cool
 - Back-lit digital display
 - Service filter indicator
 - Heat pump compatible
- **TSTATA2152-2**
Heat pump 5+2 Day Programmable Digital Thermostat
 - Stages: 2 Heat & 1 Cool
 - Auxiliary heat indicator
 - Service filter indicator
 - Back-lit digital display
- **TSTATA2100-2**
Heat pump Non-Programmable Digital Thermostat
 - Stages: 2 Heat & 1 Cool
 - Auxiliary heat indicator
- **TSTATA1100-2**
Non-Programmable Digital Thermostat
 - Stages: 1 Heat & 1 Cool
 - Heat pump compatible
 - RC and RH terminals

Split Systems

Air Conditioners

ITEM #	DESCRIPTION
ABK-20	Anchor Bracket Kit
ASC-01A	Anti-Short Cycle Kit
CSR-U-1/2/3	Hard-Start Kits
FSK-01A	Freeze Protection Kit (Indoor Coil)
LAKT-01	Low Ambient Control for 14-16 SEER units; can only be used with TXV-equipped indoor coil
LSK-01A	Liquid Line Solenoid
OT18-60A	Outdoor Thermostat
PCK-01A ¹	Pressure Control Kit; high-pressure switch and time-delay relay
TX2N2/TX3N2/TX5N2	Non-bleed TXV Kits – R-22
TX2N4A/TX3N4/TX5N4	Non-bleed TXV Kits – R-410A

¹ For use with Amana® brand R-22 Split System Air Conditioners

Heat Pumps

ITEM #	DESCRIPTION
ABK-20	Anchor Bracket Kit
AFE18-60A2	Fossil Fuel Kit
ASC-01A	Anti-Short Cycle Kit
CSR-U-1/2/3	Hard-Start Kits
EH18-60	Emergency Heat Relay Kit
FSK-01A	Freeze Protection Kit (Indoor Coil)
HPSK-01	Heat Pump Shut-off Relay; for ACNF Air Handlers
LAKT-01	Low Ambient Control for 14-16 SEER units; can only be used with TXV-equipped indoor coil
OT18-60A	Outdoor Thermostat Kit with Lockout Stat
OT/EHR18-60	Emergency Heat Relay kit
TX2N2/TX3N2/TX5N2	Non-bleed TXV Kits – R-22
TX2N4A/TX3N4/TX5N4	Non-bleed TXV Kits – R-410A

² Required for use with a dual-fuel split system heat pump system unless using ComfortNet™ models

Expansion Valve Kit Match-ups

ITEM #	DESCRIPTION	APPLICABLE UNITS
TX2N2	Expansion Valve Kit, Non-bleed: Field-installed for 1½- to 2-ton R-22 air conditioners & heat pumps	CAUF, CAPF, CHPF, CSCF, ARPF, ARUF, ASPF
TX2N4A	Expansion Valve Kit, Non-bleed: Field-installed for 1½- to 2-ton R-410A air conditioners & heat pumps	
TX3N2	Expansion Valve Kit, Non-bleed: Field-installed for 2- to 3-ton R-22 air conditioners & heat pumps	
TX3N4	Expansion Valve Kit, Non-bleed: Field-installed for 2- to 3-ton R-410A air conditioners & heat pumps	
TX5N2	Expansion Valve Kit, Non-bleed: Field-installed for 3½- through 5-ton R-22 air conditioners & heat pumps	
TX5N4	Expansion Valve Kit, Non-bleed: Field-installed for 3½ through 5-ton R-410A air conditioners & heat pumps	
TXV-30	Expansion Valve Kit; non-bleed: Field-installed for 1.5 to 2.5-ton R-410A air conditioners	
TXV-42	Expansion Valve Kit; non-bleed: Field-installed for 3.0 to 3.5-ton R-410A air conditioners	
TXV-48	Expansion Valve Kit; non-bleed: Field-installed for 4.0-ton R-410A air conditioners	
TXV-60	Expansion Valve Kit; non-bleed: Field-installed for 5.0-ton R-410A air conditioners	

ACCESSORIES

Gas Furnaces

ITEM #	DESCRIPTION	FOR USE WITH
DCVK-20	Concentric Vent Kit (2")	90% Furnaces with 2" Vent
DCVK-30	Concentric Vent Kit (3")	90% Furnaces with 3" Vent
DEHUM1	Dehumidistat	All 2 Stage Variable-Speed Furnaces
CFB21	Downflow Floor Base	90% Downflow Furnaces 21" Wide
CFB24	Downflow Floor Base	90% Downflow Furnaces 24.5" Wide
CFB17	Downflow Floor Base	90% Downflow Furnaces 17.5" Wide
SBT14	Downflow Sub-Base	80% Downflow Furnaces 14" Wide
SBT17	Downflow Sub-Base	80% Downflow Furnaces 17.5" Wide
SBT21	Downflow Sub-Base	80% Downflow Furnaces 21" Wide
RF000142	Drain Kit for Horizontal Left Installation	All 90% Furnaces
EFR01	External Filter Rack with 16"x25" Permanent Filter	All Furnaces
017K000005	Flush Mount Vent Kit	All 90% Furnaces
AFE18-60A	Fossil Fuel (Duel Fuel) Kit	All Furnaces Applied with Heat Pumps
FSRKG-14/17/21/24	Furnace Noise Reduction Kits	80% Furnaces (Except Downflow)
HANG21	High-Altitude Natural Gas Kit (+5,500 Ft)	80% Single Stage and Hybrid Furnaces
HA02	High-Altitude Natural Gas Kit (+7,000 Ft)	80% Two Stage Furnaces
HANG11 - HANG16	High-Altitude Natural Gas Kits - 90% Furnaces	See Furnace Spec Sheet for Specific Kit Number
HAPS27 - HAPS31	High-Altitude Pressure Switch Kits - 90% Furnaces	See Furnace Spec Sheet for Specific Kit Number
HALP10 - HALP13	High-Altitude LP Gas Kits - 90% Furnaces	See Furnace Spec Sheet for Specific Kit Number
0270K00012	Horizontal Conversion Pressure Switch Kit	GKS9 Furnaces
LPLP03	Low LP Gas Pressure Switch	All Furnaces Converted to LP Gas
LPM-06	LP Conversion Kit (Springs & Orifice)	All Hybrid and Two Stage Furnaces
LPT-03	LP Conversion Kit (Springs & Orifice)	All Single Stage Furnaces
LPKMOD***	LP Conversion Kits (Gas Valve)	All Modulating Furnaces
MVK-01	Masonry Vent Kits (Upflow Applications Only)	80% Furnaces except GMS8120 & GMS8140
MVK-02	Masonry Vent Kits (Upflow Applications Only)	GMS8120 & GMS8140 Furnaces Only
FTK04	Twinning Kit	80% & 90% Furnaces (Non-EMC motors)

Packaged Units

APG13/APG15 Packaged Gas/Electric Units

ITEM #	DESCRIPTION
20464501PDGK	Horizontal Duct Cover for Medium Chassis
20464502PDGK	Horizontal Duct Cover for Large Chassis
LPT-00A	LP Conversion Kit for GPG13
LPM-06	LP Conversion Kit for GPG15
PGC101/102/103	Roof Curb for Small/Medium/Large Chassis
PGED101/102/103	Downflow Economizer for Small/Medium/Large Chassis
PGEH101/102/103	Horizontal Economizer for Small/Medium/Large Chassis
PGFR101/102/103	Internal Filter Rack for Small/Medium/Large Chassis
PGMDD101/102/103	Manual 25% Fresh-Air Damper – Downflow Application for Small/Medium/Large Chassis
PGMDH101/102/103	Manual 25% Fresh-Air Damper – Horizontal Application for Small/Medium/Large Chassis
PGMDMD101/102/103	Motorized 25% Fresh-Air Damper – Downflow Application for Small/Medium/Large Chassis
PGMDMH101/102/103	Motorized 25% Fresh-Air Damper – Horizontal Application for Small/Medium/Large Chassis
SQRPG101/102/103	Square-to-Round Adapter with 16" Round – Downflow Application for Small/Medium/Large Chassis
SQRPGH101/102/103	Square-to-Round Adapter with 16" Round – Horizontal Application for Small/Medium/Large Chassis



DAIKIN DUCTLESS SYSTEMS

KE | WALL-MOUNTED

UP TO 18 SEER 8.5 HSPF

DUCTLESS SYSTEMS

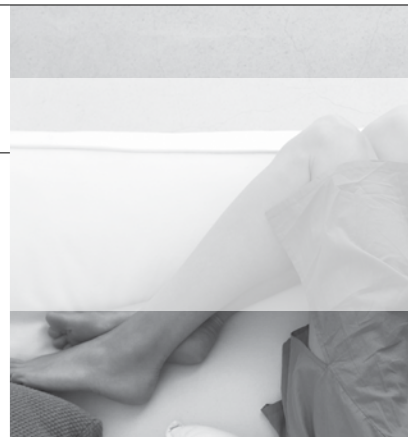
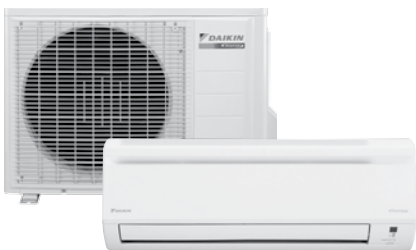
SYSTEM PERFORMANCE		0.75 TON	1.0 TON	1.0 TON	1.5 TON	2.0 TON
Indoor Model#		FTXN09KEVJU5	FTXN12KEVJU5	FTXN15KVJU	FTXN18KVJU	FTXN24KVJU
Outdoor Model #	Cooling Only	RKN09KEVJU5	RKN12KEVJU5	RKN15KEVJU5	RKN18KEVJU5	RKN24KEVJU5
	Heat Pump	RXN09KEVJU5	RXN12KEVJU5	RXN15KEVJU5	RXN18KEVJU5	RXN24KEVJU5
Cooling Capacity (Rated) (BTU/h)		9,000	12,000	15,000	18,000	22,000
Cooling Capacity (Min – Max) (BTU/h)		4,400 – 9,500	4,400 – 12,000	5,800 – 15,000	5,800 – 18,000	5,800 – 22,000
Heating Capacity (Rated) [†] (BTU/h)		10,000	13,500	18,000	21,600	24,000
Heating Capacity (Min – Max) [†] (BTU/h)		4,400 – 11,600	4,400 – 16,400	5,800 – 21,200	5,800 – 24,000	5,800 – 25,400
SEER / HSPF		18 / 8.5	18 / 8.5	18 / 8.5	18 / 8.5	18 / 8.5
COP / EER		3.49 / 12.0	3.25 / 9.9	3.49 / 12.0	2.88 / 12.0	2.78 / 8.6
Power Supply (Voltage-Phase-Hz)		208/230V-1-60	208/230V-1-60	208/230V-1-60	208/230V-1-60	208/230V-1-60
Minimum Circuit Amps		4.8	7.0	15.5	15.5	15.5
Maximum Overcurrent Protection (A)		15.0	15.0	20.0	20.0	20.0 Ø
Liquid Piping Connections (O.D.) (in.)		Ø 1/4	1/4	Ø 1/4	Ø 1/4	Ø 1/4
Gas Piping Connections (O.D.) (in.)		Ø 3/8	Ø 3/8	Ø 1/2	Ø 1/2	Ø 1/2
Condensate Drain (in.)		Ø 5/8	Ø 5/8	Ø 11/16	Ø 11/16	Ø 11/16
Max. Piping Length (ft.)		65.6	65.6	98.2	98.2	98.2
Max. Piping Height (ft.)		49.2	49.2	65.6	65.6	65.6

[†] Applicable to heat pump models only.

COMFORTABLE LIMITED WARRANTY* PROTECTION



*Complete warranty details available from your local dealer or at www.daikincomfort.com. To receive the 10-Year Parts Limited Warranty, online registration must be completed within 60 days of installation. Online registration is not required in California or Quebec.



- Standby electricity saving reduces electricity consumption by up to 90% when the unit is not in operation
- Econo-mode decreases power consumption during start-up when other appliances need more power

- Titanium apatite photocatalytic air purification filter attracts microscopic particles that can carry bacteria and viruses

- Quiet operation with sound levels as low as 22 decibels
- Available from 9,000 BTU/h to 24,000 BTU/h in heat pump and cooling-only models

LV | WALL-MOUNTED UNITS

UP TO 24.5 SEER & 12.5 HSPF

HIGH-EFFICIENCY SYSTEM PERFORMANCE	0.75 TONS	1.0 TONS	1.25 TONS	1.5 TONS	2.0 TONS
Indoor Model#	FTXS09LVJU	FTXS12LVJU	FTXS15LVJU	FTXS18LVJU	FTXS24LVJU
Outdoor Model #	RXS09LVJU	RXS12LVJU	RXS15LVJU	RXS18LVJU	RXS24LVJU
Cooling Capacity (Rated) (BTU/h)	10,600	13,800	18,000	21,600	25,800
Cooling Capacity (Min – Max) (BTU/h)	4,400 – 10,600	4,800 – 13,800	5,800 – 18,000	5,800 – 21,600	7,800 – 25,800
Heating Capacity (Rated) [†] (BTU/h)	15,600	14,400	18,000	21,600	25,400
Heating Capacity (Min – Max) [†] (BTU/h)	4,400 – 15,600	4,800 – 18,000	5,800 – 22,300	5,800 – 26,700	7,800 – 31,400
SEER / HSPF	24.5 / 12.5	23 / 12.5	20.6 / 11.6	20.3 / 11	20.0 / 10.6
COP / EER	4.46 / 15.3	4.35 / 12.8	4.00 / 14.4	3.70 / 12.7	3.37 / 12.5
Power Supply (Voltage-Phase-Hz)	208/230V-1-60	208/230V-1-60	208/230V-1-60	208/230V-1-60	208/230V-1-60
Minimum Circuit Amps	8.00	8.75	13.75	13.75	17.50
Maximum Overcurrent Protection (A)	15.0	15.0	20.0	20.0	20.0
Liquid Piping Connections (O.D.) (in.)	Ø 1/4	Ø 1/4	Ø 1/4	Ø 1/4	Ø 1/4
Gas Piping Connections (O.D.) (in.)	Ø 3/8	Ø 3/8	Ø 1/2	Ø 1/2	Ø 5/8
Condensate Drain (in.)	Ø 5/8	Ø 5/8	Ø 5/8	Ø 5/8	Ø 5/8
Max. Piping Length (ft.)	65.6	65.6	98.4	98.4	98.4
Max. Piping Height (ft.)	49.2	49.2	65.6	65.6	65.6

[†] Applicable to heat pump models only.

DUCTLESS SYSTEMS



*Complete warranty details available from your local dealer or at www.daikincomfort.com. To receive the 12-Year Parts Limited Warranty, online registration must be completed within 60 days of installation. Online registration is not required in California or Quebec.

COMFORTABLE LIMITED WARRANTY* PROTECTION



- Intelligent eye adjusts between normal operation and energy-saving mode by using a motion-detecting sensor to monitor occupancy, resulting in heating and cooling savings

- Titanium apatite photocatalytic air purification filter attracts microscopic particles that can carry bacteria and viruses
- Weekly timer offers the ability to program up to four settings per day

- 3-D airflow combines vertical and horizontal auto-swing to circulate warm or cool air throughout large spaces
- Available from 9,000 BTU/h to 24,000 BTU/h in heat pump models

LV | SLIM-DUCT UNITS

UP TO 15.5 SEER & 10.4 HSPF

DUCTLESS SYSTEMS

HIGH-EFFICIENCY SYSTEM PERFORMANCE	0.75 TONS	1.0 TONS
Indoor Model#	FDXS09LVJU	FDXS12LVJU
Outdoor Model #	RXS09LVJU	RXS09LVJU
Cooling Capacity (Rated) (BTU/h)	8,500	11,500
Cooling Capacity (Min – Max) (BTU/h)	4,400 – 8,500	4,800 – 11,500
Heating Capacity (Rated)† (BTU/h)	10,000	11,500
Heating Capacity (Min – Max)† (BTU/h)	4,400 – 10,000	4,800 – 11,500
SEER / HSPF	15.1 / 10.3	15.5 / 10.4
COP / EER	3.45 / 11.2	3.51 / 9.1
Power Supply (Voltage-Phase-Hz)	208/230V-1-60	208/230V-1-60
Minimum Circuit Amps	8.00	8.75
Maximum Overcurrent Protection (A)	15	15
Liquid Piping Connections (O.D.) (in.)	Ø 1/4	Ø 1/4
Gas Piping Connections (O.D.) (in.)	Ø 3/8	Ø 3/8
Condensate Drain (in.)	Ø 25/32	Ø 25/32
Max. Piping Length (ft.)	65.6	65.6
Max. Piping Height (ft.)	49.2	49.2

† Applicable to heat pump models only.

COMFORTABLE LIMITED WARRANTY* PROTECTION



*Complete warranty details available from your local dealer or at www.daikincomfort.com. To receive the 12-Year Parts Limited Warranty, online registration must be completed within 60 days of installation. Online registration is not required in California or Quebec.



- Ductless or short-run ducted operation is perfect for bedrooms, basements, bathrooms and closets

- Increased energy savings with Econo-Mode function reduces operating current and power consumption during start-up

- Undisturbed comfort with indoor operating sound levels as low as 31 dB(A)

QUATERNITY | WALL-MOUNTED

UP TO 26.1 SEER & 11.0 HSPF

NOMINAL TONS		0.75 Ton	1.0 Ton	1.25 Ton
Indoor Model#		FTXG09HVJU	FTXG12HVJU	FTXG15HVJU
Outdoor Model#		RXG09HVJU	RXG12HVJU	RXG15HVJU
Cooling Capacity (Rated)	BTU/h	9,000	12,000	15,000
Cooling Capacity (Min – Max)	BTU/h	5,300 – 12,300	5,300 – 15,700	5,300 – 18,000
Heating Capacity (Rated) †	BTU/h	12,000	16,000	18,000
Heating Capacity (Min – Max) †	BTU/h	4,400 – 18,000	4,400 – 19,100	4,400 – 21,200
SEER / HSPF		26.1 / 11.0	24.2 / 10.6	21.0 / 10.0
COP / EER		4.51 / 15.8	4.04 / 14.0	3.99 / 12.9
Power Supply (Voltage/Phase)		208/230V/1	208/230V/1	208/230V/1
Minimum Circuit Amps	A	14.5	14.5	14.5
MOCP	A	15.0	15.0	15.0
Liquid Piping Connections (O.D.)	in.	Ø 1/4	Ø 1/4	Ø 1/4
Gas Piping Connections (O.D.)	in.	Ø 3/8	Ø 3/8	Ø 3/8
Condensate Drain	A	Ø 11/16	Ø 11/16	Ø 11/16
Max. Piping Length	ft.	32	32	32
Max. Piping Height	ft.	26	26	26

† Applicable to heat pump models only.

DUCTLESS SYSTEMS



*Complete warranty details available from your local dealer or at www.daikincomfort.com. To receive the 12-Year Parts Limited Warranty, online registration must be completed within 60 days of installation. Online registration is not required in California or Quebec.

COMFORTABLE LIMITED WARRANTY* PROTECTION



- Provides high-energy savings with systems up to SEER 26.1 and EER 15.8
- Controls humidity levels to a relative setting

- Reduces bacteria, mold, viruses, and odors with the “Flash Streamer” electronic air cleaner
- Delivers high-heating capacity at low ambient temperatures down to -4°F

- Offers simple, user-friendly wireless infra-red remote controller
- Quiet operation with sound levels as low as 26 decibels

MXS | MULTI-ZONE

OUTDOOR UNITS

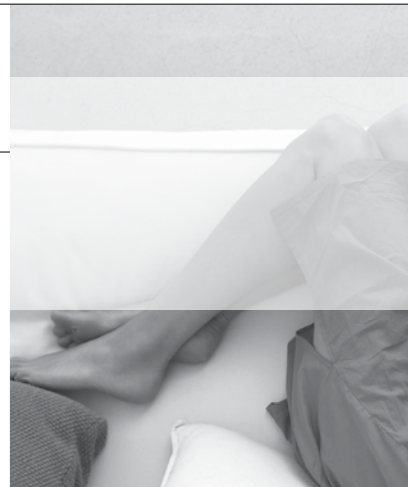
DUCTLESS SYSTEMS

OUTDOOR MODEL	2MXS18GVJU	2MXS18GVJU	4MXS32GVJU	RMXS48LVJU
Nominal Capacity (BTU/h)	18,000	24,000	30,600	48,000
Max. Connective Cap (BTU/h)	18,000	39,000	45,000	62,400
Min – Max No. of Indoor Units	2	2 – 3	2 – 4	2 – 8
Power Supply (Voltage-Phase-Hz)	208/230V-1-60	208/230V-1-60	208/230V-1-60	208/230V-1-60
Minimum Circuit Amps	11.1	17.8	18.0	27.0
Maximum Overcurrent Protection (A)	20.0	20.0	20.0	30.0
Max. Total Piping Length	164	230	230	433
Max. Piping Length to Indoor	82	82	82	230
Max. Piping Height	49.2	49.2	49.2	98.4
SEER/HSPF (non-ducted)	19.5 / 9.2	16.6 / 9.0	17.2/9.3	18.8/11.3
SEER/HSPF (mixed)	16.3 / 8.5	14.3 / 8.35	15.25/8.6	16.5/10.5
SEER/HSPF (ducted)	13.0 / 7.7	13.0 / 7.7	13.3/7.9	14.1/9.6
COP / EER (non-ducted)	3.40 / 12.60	3.20 / 12.50	3.40 / 10.30	10.3 / 3.0
COP / EER (mixed)	3.15 / 10.80	3.15 / 10.80	3.00 / 8.40	9.8 / 2.9
COP / EER (ducted)	2.90 / 9.00	2.70 / 9.70	3.20 / 9.35	9.3 / 2.7

COMFORTABLE LIMITED WARRANTY* PROTECTION



*Complete warranty details available from your local dealer or at www.daikincomfort.com. To receive the 12-Year Parts Limited Warranty, online registration must be completed within 60 days of installation. Online registration is not required in California or Quebec.



- Ability to connect up to four indoor units to a single outdoor unit.

- Connects to multiple indoor unit styles: wall-mounted, 2 x 2 cassette, and slim-ducted models

- Reduced installation space
- Long piping lengths up to 433 ft.

INDOOR UNITS

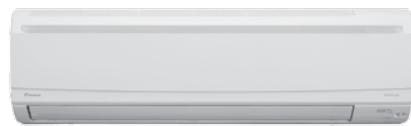
MXS INDOOR UNITS						
WALL-MOUNTED UNITS						
Indoor Model#	CTXS07LVJU	CTXS09HVJU	CTXS12HVJU	FTXS15LVJU	FTXS18LVJU	FTXS24LVJU
Cooling Capacity (Nominal) (BTU/h)	7,000	9,000	12,000	15,000	18,000	21,500
Heating Capacity (Nominal) (BTU/h)	8,500	12,000	14,400	18,000	21,600	25,400
Liquid Piping Connection (O.D.) (in.)	Ø 1/4	Ø 1/4	Ø 1/4	Ø 1/4	Ø 1/4	Ø 1/4
Gas Piping Connection (O.D.) (in.)	Ø 3/8	Ø 3/8	Ø 3/8	Ø 1/2	Ø 3/8	Ø 5/8
Condensate Drain (in.)	Ø 5/8	Ø 11/16	Ø 11/16	Ø 5/8	Ø 5/8	Ø 5/8
SLIM-DUCT UNITS						
Indoor Model#		FDXS09LVJU	FDXS12LVJU	CDXS15LVJU	CDXS18LVJU	CDXS24LVJU
Rated Capacity Class		9,000	12,000	15,000	18,000	24,000
External Static Pressure		0.12	0.12	0.16	0.16	0.16
Liquid Piping Connection (O.D.) (in.)		Ø 1/4	Ø 1/4	Ø 1/4	Ø 1/4	Ø 1/4
Gas Piping Connection (O.D.) (in.)		Ø 3/8	Ø 3/8	Ø 1/2	Ø 1/2	Ø 1/2
Condensate Drain (in.)		Ø 1-1/32	Ø 1-1/32	Ø 1-1/32	Ø 1-1/32	Ø 1-1/32
2' X 2' CEILING CASSETTE UNITS						
Indoor Model#		FFQ09LVJU	FFQ12LVJU	FFQ15LVJU	FFQ18LVJU	
Cooling Capacity (Nominal) (BTU/h)		9,500	12,000	15,000	18,000	
Heating Capacity (Nominal) (BTU/h)		11,100	14,000	17,500	21,500	
Liquid Piping Connection (O.D.) (in.)		Ø 1/4	Ø 1/4	Ø 1/4	Ø 1/4	
Gas Piping Connection (O.D.) (in.)		Ø 3/8	Ø 3/8	Ø 1/2	Ø 1/2	
Condensate Drain (in.)		Ø 1-1/32	Ø 1-1/32	Ø 1-1/32	Ø 1-1/32	

DUCTLESS SYSTEMS



*Complete warranty details available from your local dealer or at www.daikincomfort.com. To receive the 12-Year Parts Limited Warranty, online registration must be completed within 60 days of installation. Online registration is not required in California or Quebec.

COMFORTABLE LIMITED WARRANTY* PROTECTION



Wall-Mounted Units

- Intelligent Eye occupancy sensor
- Weekly timer for programmable comfort
- Titanium apatite photocatalytic air purification

Slim-Duct Units

- Static capability up to 0.16" W.G.
- Compact design (7 7/8" in height)
- Rear or bottom return

2' X 2' Ceiling Cassette Units

- 2, 3, or 4-way airflow pattern
- Built-in condensate pump (up to 22")
- Fresh air intake knockout

SKYAIR | OUTDOOR UNITS

OVERVIEW

SkyAir is the best ducted and duct-free solution for light commercial and residential whole-house applications. Ranging from 18,000 BTU/h to 42,000 BTU/h, these innovative systems provide energy efficiency, technological reliability, and installation flexibility.

- DC fan motor improves efficiency compared to conventional AC motors.
- Aero spiral fan and grille minimizes turbulence and increases sound reduction.
- Reluctance brushless DC compressor increases efficiency.

- Swing compressor with friction reduction and quieter rotation or scroll compressor with robust and low sound design provides maximum durability.
- Long piping lengths up to 230 ft. allow layout flexibility.
- Anti-corrosion treatment on the outdoor heat exchanger increases durability.

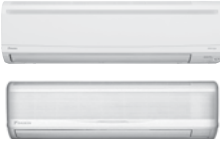




DUCTLESS SYSTEMS



COMFORTABLE LIMITED
WARRANTY* PROTECTION



* Complete warranty details available from your local dealer or at www.daikincomfort.com.

	INDOOR TYPE		FEATURES
DUCTLESS	Wall-Mounted Unit FAQ / FTXS		Wall-mounted FAQ / FTXS units are compact and made with a sophisticated design to blend in discretely with any interior décor. These units feature wide-angle louvers and auto-swing functions for comfortable airflow distribution.
	DC Ducted Concealed Ceiling Unit (Medium to High Static) FBQ		DC Ducted FBQ units offer a low profile design for an easily concealed look. At less than 12" in height, these built-in systems provide a powerful solution for any small to mid-size application.
	Ceiling-Mounted Round-flow Cassette FCQ		Round-flow ceiling cassette FCQ units provide an elegant and customizable solution ideal for open plan applications. Easily cleaned with airflow flexibility, systems are a low maintenance option for all around comfort.
	Ceiling-Suspended Unit FHQ		Ceiling-suspended FHQ units have a slim and elegant design for open or structured applications. With wide air openings and an innovative stream fan, operation is quiet and comfortable throughout the entire space.
Ducted	Vertical Air-Handling Unit FTQ		Daikin's inverter ducted FTQ units are a cost-effective, space-saving alternative to traditional systems. These systems are designed for quiet operation with superior heating capabilities.

DUCTLESS SYSTEMS



* Complete warranty details available from your local dealer or at www.daikincomfort.com.

COMFORTABLE LIMITED WARRANTY* PROTECTION

SKYAIR | OUTDOOR UNITS

FAQ WALL- MOUNT

DUCTLESS SYSTEMS

FAQ PERFORMANCE	1.5 TONS	2.0 TONS
Indoor Model#	FAQ18PVJU	FAQ24PVJU
Outdoor Model # (Cooling Only)	RZR18PVJU	RZR24PVJU
Outdoor Model # Heat Pump	RZQ18PVJU9	RZQ24PVJU9
Cooling Capacity (Rated) (BTU/h)	18,000	24,000
Heating Capacity (Rated) [†] (BTU/h)	20,000	26,000
SEER / HSPF	18.6 / 8.7	17.6 / 9.1
EER	12.7	10.2
Power Supply (Voltage-Phase-Hz)	208/230V-1-60	208/230V-1-60
Liquid Piping Connections (O.D.) (in.)	∅ 3/8	∅ 3/8
Gas Piping Connections (O.D.) (in.)	∅ 5/8	∅ 5/8
Condensate Drain (in.)	∅ 11/16	∅ 11/16
Dimensions (H" x W" x D")	11-3/8 x 41-3/8 x 9	
Net Weight	31	31
Max. Piping Length (ft.)	164	164
Max. Piping Height (ft.)	98	98

[†] Applicable to heat pump models only

COMFORTABLE LIMITED WARRANTY* PROTECTION



* Complete warranty details available from your local dealer or at www.daikincomfort.com.



- Vertical auto-swing function for efficient air distribution
- Removable front panel for easy cleaning
- Mold-resistant, washable filters



SKYAIR | INDOOR UNITS

FTXS WALL-MOUNT

FTXS PERFORMANCE	2.5 TONS	3.0 TONS
Indoor Model#	FTXS30LVJU	FTXS36LVJU
Outdoor Model# Cooling Only	RKS30LVJU	RKS36LVJU
Outdoor Model# Heat Pump	RXS30LVJU	RXS36LVJU
Cooling Capacity (Rated) (BTU/h)	30,000	36,000
Cooling Capacity (Min–Max) (BTU/h)	10,200 – 30,000	10,200 – 36,000
Heating Capacity (Rated) [†] (BTU/h)	34,800	38,000
Heating Capacity (Min–Max) [†] (BTU/h)	10,200 – 34,000	10,200 – 38,000
SEER / HSPF	19.3 / 8.3	17.9 / 8.3
EER	10.71	8.37
Minimum Circuit Amps	19.5	19.5
Maximum Overcurrent Protection (A)	20.0	20.0
Liquid Piping Connections (O.D.) (in.)	∅ 3/8	∅ 3/8
Gas Piping Connections (O.D.) (in.)	∅ 5/8	∅ 5/8
Condensate Drain (in.)	∅ 5/8	∅ 5/8
Max. Piping Length (ft.)	98.4	98.4
Max. Piping Height (ft.)	65.6	65.6

[†] Applicable to heat pump models only

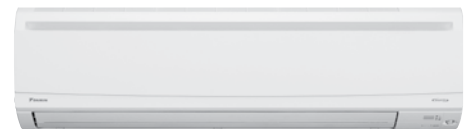
DUCTLESS SYSTEMS



* Complete warranty details available from your local dealer or at www.daikincomfort.com.

COMFORTABLE LIMITED WARRANTY* PROTECTION

- Vertical auto-swing function for efficient air distribution
- Removable front panel for easy cleaning
- Mold-resistant, washable filters



SKYAIR | INDOOR UNITS

FBQ DC DUCTED

NOMINAL TONS	1.5 TONS	2.0 TONS	2.5 TONS	3.0 TONS	3.5 TONS
Indoor Model#	FBQ18PVJU	FBQ24PVJU	FBQ30PVJU	FBQ36PVJU	FBQ42PVJU
Outdoor Model # Cooling Only	RZR18PVJU	RZR24PVJU	RZR30PVJU	RZR36PVJU	RZR42PVJU
Outdoor Model # Heat Pump	RZQ18PVJU9	RZQ24PVJU9	RZQ30PVJU	RZQ36PVJU9	RZQ42PVJU9
Cooling Capacity (Nominal) (BTU/h)	18,000	24,000	30,000	36,000	42,000
Heating Capacity (Nominal) (BTU/h)	20,000	27,000	34,000	40,000	47,000
SEER / HSPF †	17.5 / 10.6	16.5 / 10.5	16.0 / 9.2	17.5 / 9.1	16.0 / 8.8
EER	14.1	12.0	10.5	11.2	10.2
Power Supply (Voltage-Phase-Hz)	208/230V-1-60	208/230V-1-60	208/230V-1-60	208/230V-1-60	208/230V-1-60
External Static Pressure ("W.G)	Standard 0.40 (0.80 - 0.20)				
Liquid Piping Connections O.D.) (in.)	Ø 1/4	Ø 3/8	Ø 3/8	Ø 3/8	Ø 3/8
Gas Piping Connections (O.D.) (in.)	Ø 1/2	Ø 5/8	Ø 5/8	Ø 5/8	Ø 5/8
Condensate Drain (in.)	Ø 1-1/4	Ø 1-1/4	Ø 1-1/4	Ø 1-1/4	Ø 1-1/4
Max. Piping Length (ft.)	164	164	164	230	230
Max. Piping Height (ft.)	98	98	98	164	164

† Applicable to heat pump models only

DUCTLESS SYSTEMS

COMFORTABLE LIMITED WARRANTY* PROTECTION



* Complete warranty details available from your local dealer or at www.daikincomfort.com.



- External static pressure up to 0.8" W.G.
- Three user-selected fan speeds available, plus fan "Auto" logic
- Built-in condensate pump
- Bottom access for easy service



SKYAIR | INDOOR UNITS

FCQ ROUND-FLOW CASSETTE

FCQ PERFORMANCE	1.5 TONS	2.0 TONS	2.5. TONS	3.0 TONS	3.5 TONS
Indoor Model#	FCQ18PAVJU	FCQ24PAVJU	FCQ30PAVJU	FCQ36PAVJU	FCQ42PAVJU
Outdoor Model # Cooling Only	RZR18PVJU	RZR24PVJU	RZR30PVJU	RZR36PVJU	RZR42PVJU
Outdoor Model # Heat Pump	RZQ18PVJU9	RZQ24PVJU9	RZQ30PVJU	RZQ36PVJU9	RZQ42PVJU9
Cooling Capacity (Rated) (BTU/h)	18,000	24,000	30,000	36,000	42,000
Heating Capacity (Rated) [†] (BTU/h)	20,000	27,000	34,000	40,000	47,000
SEER / HSPF [†]	17.2 / 10.1	16.8 / 9.7	15.8 / 9.7	17.5 / 8.4	16.0 / 8.5
EER	13.9	12.0	10.2	11.2	10.2
Power Supply (Voltage-Phase-Hz)	208/230V-1-60	208/230V-1-60	208/230V-1-60	208/230V-1-60	208/230V-1-60
Liquid Piping Connections (O.D.) (in.)	Ø 1/4	Ø 3/8	Ø 3/8	Ø 3/8	Ø 3/8
Gas Piping Connections (O.D.) (in.)	Ø 1/2	Ø 5/8	Ø 5/8	Ø 5/8	Ø 5/8
Condensate Drain (in.)	Ø 1-1/4	Ø 1-1/4	Ø 1-1/4	Ø 1-1/4	Ø 1-1/4
Max. Piping Length (ft.)	164	164	164	230	230
Max. Piping Height (ft.)	98	98	98	164	164

[†] Applicable to heat pump models only

DUCTLESS SYSTEMS



* Complete warranty details available from your local dealer or at www.daikincomfort.com.

COMFORTABLE LIMITED WARRANTY* PROTECTION

- 23 configurable airflow patterns for ideal airflow distribution
- 360° airflow reduces draft
- Stain-resistant decorative panel allows for easy cleaning



SKYAIR | INDOOR UNITS

FHQ CEILING SUSPENDED

FHQ PERFORMANCE	1.5 TONS	2.0 TONS	2.5. TONS	3.0 TONS	3.5 TONS
Indoor Model#	FHQ18PVJU	FHQ24PVJU	FHQ30PVJU	FHQ36MVJU	FHQ42MVJU
Outdoor Model # Cooling Only	RZR18PVJU	RZR24PVJU	RZR30PVJU	RZR36PVJU	RZR42PVJU
Outdoor Model # Heat Pump	RZQ18PVJU9	RZQ24PVJU9	RZQ30PVJU	RZQ36PVJU9	RZQ42PVJU9
Cooling Capacity (Rated) (BTU/h)	18,000	24,000	30,000	36,000	40,500
Heating Capacity (Rated) [†] (BTU/h)	20,000	27,000	34,000	37,500	39,500
SEER / HSPF [†]	18.0 / 11.1	18.1 / 11.1	18.1 / 10.0	17.2 / 8.4	13.8 / 8.2
EER	14.0	12.6	10.5	10.2	9.5
Power Supply (Voltage-Phase-Hz)	208/230V-1-60	208/230V-1-60	208/230V-1-60	208/230V-1-60	208/230V-1-60
Liquid Piping Connections (O.D.) (in.)	∅ 3/8	∅ 3/8	∅ 3/8	∅ 3/8	∅ 3/8
Gas Piping Connections (O.D.) (in.)	∅ 5/8	∅ 5/8	∅ 5/8	∅ 5/8	∅ 5/8
Condensate Drain (in.)	∅ 1	∅ 1	∅ 1	∅ 1	∅ 1
Max. Piping Length (ft.)	164	164	164	230	230
Max. Piping Height (ft.)	98	98	98	164	164

[†] Applicable to heat pump models only

DUCTLESS SYSTEMS

COMFORTABLE LIMITED WARRANTY* PROTECTION



* Complete warranty details available from your local dealer or at www.daikincomfort.com.



- Auto-swing capability with 100° airflow pattern
- Lateral servicing space allows installation in corners, narrow spaces, walls and ceilings
- Innovative stream fan technology



SKYAIR | INDOOR UNITS

FTQ AIR HANDLER

Nominal Tons	1.5 TONS	2.0 TONS	2.5 TONS	3.0 TONS	3.5 TONS
Indoor Model#	FTQ18PBVJU	FTQ24PBVJU	FTQ30PBVJU	FTQ36PBVJU	FTQ42PBVJU
Outdoor Model#	RZQ18PVJU9	RZQ24PVJU9	RZQ30PVJU9	RZQ36PVJU9	RZQ42PVJU9
Cooling Capacity (Rated) (BTU/h)	18,000	24,000	30,000	36,000	40,000
Cooling Capacity (Min–Max) (BTU/h)	9,000 – 18,000	9,000 – 24,000	12,000 – 30,000	12,000 – 36,000	12,000 – 42,000
Heating Capacity (Rated) [†] (BTU/h)	20,000	27,000	34,000	40,000	47,000
Heating Capacity (Min–Max) [†] (BTU/h)	9,000 – 20,000	9,000 – 27,000	12,000 – 34,000	12,000 – 40,000	12,000 – 47,000
SEER / HSPF [†]	20.0 / 12.0	19.0 / 11.5	19.5 / 10.0	18.0 / 9.5	17.0 / 9.0
COP / EER	4.0 / 14.5	3.8 / 13.5	3.7 / 19.5	3.6 / 12.5	3.2 / 12.0
Power Supply (Voltage-Phase-Hz)	208/230V-1-60	208/230V-1-60	208/230V-1-60	208/230V-1-60	208/230V-1-60
External Static Pressure ("W.G.)	Up to 0.50				
Liquid Piping Connections (O.D.) (in.)	∅ 3/8	∅ 3/8	∅ 3/8	∅ 3/8	∅ 3/8
Gas Piping Connections (O.D.) (in.)	∅ 5/8	∅ 5/8	∅ 5/8	∅ 5/8	∅ 5/8
Condensate Drain (in.)	∅ 1	∅ 1	∅ 1	∅ 1	∅ 1
Max. Piping Length (ft.)	98.0	98.0		230.0	
Max. Piping Height (ft.)	98.0	98.0		164.0	

[†] Applicable to heat pump models only

DUCTLESS SYSTEMS



* Complete warranty details available from your local dealer or at www.daikincomfort.com.

COMFORTABLE LIMITED WARRANTY* PROTECTION

- Low ambient heat operation down to -4°F
- Upflow or horizontal right configurations
- Field-installed electric heat options available from 3kW to 15 kW



ACCESSORIES

DUCTLESS SYSTEMS

DUCTLESS SYSTEMS

ITEM #	ITEM DESCRIPTION
CONTROLLER OPTIONS	
BRC7E830	Wireless Remote Control Kit
BRC944B2-A08	Wired Remote Controller - Kit Reference - see next 3 items
BRC944B2	Wired Controller - Part 1 of BRC944B2-A08 Kit
BRCW901A08	Wired Controller Cord - Part 2 of BRC944B2-A08 Kit
KRP980B1	Interface Adaptor for BRC944B2-A08 Kit - Part 3 (Required for the 09.12 KEVJU)
DACA- BRCW901P10	Remote Controller Cable, Plenum Rated, 10ft
DACA- BRCW901P25	Remote Controller Cable, Plenum Rated, 25ft
DACA-TS1-1	Daikin ENVi Intelligent Thermostat Kit
FILTER REPLACEMENTS	
KAF918A44	Air purifying filter with photocatalytic deodorizing filter without frame
KAF952B42	Air purifying filter with photocatalytic deodorizing filter without frame
KAF974B42S	Titanium Apatite Photocatalytic Air Purifying Filter Set
MINI-SPLIT PADS - PLASTIC PAD	
EL1838-3	Elite Plastic Pad 18x38x3
EL2436-3	Elite Plastic Pad 24x36x3
MINI-SPLIT PADS - ULTRALITE - CONCRETE BASED PAD	
UC1636-2	Ultralite Pad 16x36x2
UC2436-2	Ultralite Pad 24x36x2
UC2436-3	Ultralite Pad 16x36x3
UC2436-3	Ultralite Pad 24x36x3
MINI-SPLIT PADS - FLORIDA MARKET	
UC1636-2	N FL Hurricane Pad 18x40x4 - 150MPH Zone
UC2436-2	N FL Hurricane Pad 24x36x4 - 150MPH Zone
UC2436-3	S FL Hurricane Pad 18x40x4 - 175MPH Zone
UC2436-3	S FL Hurricane Pad 24x36x4 - 175MPH Zone
INSTALLATION TOOLS	
DACA-FSG-1	Flare Size Gauge
DACA-RBTC-1	Replacement Tubing Cutter Blade
TLTWSM	Torque Wrench Kit w/Lever -METRIC- Replaces All DACA-TQW SERIES INDIV TORQUE WRENCHES
TLTWSAE	Torque Wrench Kit w/Lever - SAE
TLB410AD	Daikin Custom Tool Kit - 22Pcs + Tool Bag
MT2H7P5	R410a Gauges w/ball vlv - Replaces - DACA-R410GS-1
FT800FN	Flaring Tool - Clutch Type Eccentric - Replaces - DACA-CFK-1
TLDB	Deburring Tool - Replaces - DACA-DT-1
TCT274	HD Tubing Cutter - 1/8 to 1-3/8 - Replaces DACA-TC-1
AD87	Straight Adapter 5/16 flare to a 1/4 flare - Replaces - DACA-SVA-1
AD87S	Angled Adapter 55deg 5/16 flare to 1/4 flare - Replaces - DACA-SVA-1
TLVCS410	Valve Core Remover / Installer Tool w/Side Port
LSFNUT14	Lineset 45Deg Flare Nut - 1/4 - Pkg 10
LSFNUT38	Lineset 45Deg Flare Nut - 3/8 - Pkg 10
LSFNUT12	Lineset 45Deg Flare Nut - 1/2 - Pkg 10
LSFNUT58	Lineset 45Deg Flare Nut - 5/8 - Pkg 10

ACCESSORIES

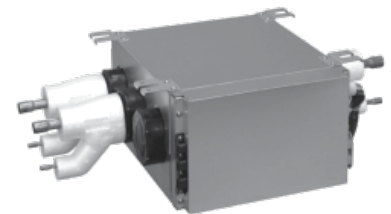
DUCTLESS SYSTEMS

LINE SETS			
MODEL NUMBER	SIZE (IN.)	LENGTH (FT.)	INSULATION (IN.)
LS14381210DMSF	1/4 x 3/8	10	1/2
LS14381215DMSF	1/4 x 3/8	15	1/2
LS14381230DMSF	1/4 x 3/8	30	1/2
LS14381250DMSF	1/4 x 3/8	50	1/2
LS14381265DMSF	1/4 x 3/8	65	1/2
LS143812100DMSF	1/4 x 3/8	100	1/2
LS14121210DMSF	1/4 x 1/2	10	1/2
LS14121215DMSF	1/4 x 1/2	15	1/2
LS14121230DMSF	1/4 x 1/2	30	1/2
LS14121250DMSF	1/4 x 1/2	50	1/2
LS14121265DMSF	1/4 x 1/2	65	1/2
LS141212100DMSF	1/4 x 1/2	100	1/2
LS14581210DMSF	1/4 x 5/8	10	1/2
LS14581215DMSF	1/4 x 5/8	15	1/2
LS14581230DMSF	1/4 x 5/8	30	1/2
LS14581250DMSF	1/4 x 5/8	50	1/2
LS14581265DMSF	1/4 x 5/8	65	1/2
LS145812100DMSF	1/4 x 5/8	100	1/2



ACCESSORIES

BRANCH PORT UNITS COMPATIBILITY TABLE				
COMPATIBILITY	2MXS18	3MXS24	4MXS32	RMXS48
CTXS09HVJU	X	X	X	X
CTXS12HVJU	X	X	X	X
FTXS15LVJU		X	X	X
FTXS18LVJU		X	X	X
FTXS24LVJU		X	X	X
FDXS09LVJU				X
FDXS12LVJU	X	X	X	X
CDXS15LVJU		X	X	X
CDXS18LVJU		X	X	X
CDXS24LVJU		X	X	X
FFQ09LVJU				X
FFQ12LVJU	X	X	X	X
FFQ15LVJU		X	X	X
FFQ18LVJU		X	X	X



RMXS48LVJU requires at least one branch port unit. Two sizes available, 2-port and 3-port. Refer to installation manual for full refrigerant piping lengths and requirements.



Residential Products Catalog

14.2

