

# INSTALLATION INSTRUCTIONS

## LOW AMBIENT KIT

### LA-01

#### Application:

The LA-01 Low Ambient Kit is a temperature-sensitive fan motor speed control intended to regulate the outdoor sections head pressure by varying the air-volume through the outdoor coil. This is accomplished by sensing the liquid temperature at the coil by means of a thermistor-probe. The probe provides an input signal to the control to increase or decrease the fan motor speed in relation to changes in the liquid temperature.

#### Parts List:

Item	Part No.	Qty.
Pressure Control / Probe	B13706-00	1
Wires Assembly	---	5
Installation Instructions	IO-561	1

#### Installation:

1. Disconnect power to the outdoor section
2. Mount the pressure control in the units control compartment.
3. a. For Condensing Units and Package Units with One Outdoor Condenser Fan:  
Attached the probe, using the tape provided, to the outdoor coil at the return bend of the third tube from the bottom as shown in the Figure 1. The tape is a special type that bonds to itself therefore, use at least two wraps of the tape to secure the probe in place.  
b. For Commercial Package Units with Multiple Outdoor Fans:  
Attached the probe, using the tape provided, to the outdoor coil at the bottom hairpin as shown in the Figure 2. The tape is a special type that bonds to itself therefore, use at least two wraps of the tape to secure the probe in place.
4. a. For Condensing Units and Package Units with One Outdoor Condenser Fan:  
Connect the electrical wiring of the control and outdoor section as shown in the Figure 1 below taking care to connect line voltage leads to the proper terminals.  
b. For Commercial Package Units with Multiple Outdoor Fans  
Connect the electrical wiring of the control and outdoor section as shown in the Figure 2 below taking care to connect line voltage leads to the proper terminals.

**NOTE: TERMINAL 3 IS FOR 208-240 V UNITS & TERMINAL 4 IS FOR 460-480 V UNITS.**

7. Follow the system calibration instructions provided in the controls instruction manual for sleeve bearing motors.
8. Reapply power to the out door section.
9. Verify system operation per the outdoor sections installation instructions.

**NOTE:** Use probe marked **PTB02** (ICM part # ICM376) supplied with the head pressure control.

# LA-01 KIT WIRING DIAGRAM WITH OUTDOOR (O.D.) UNIT

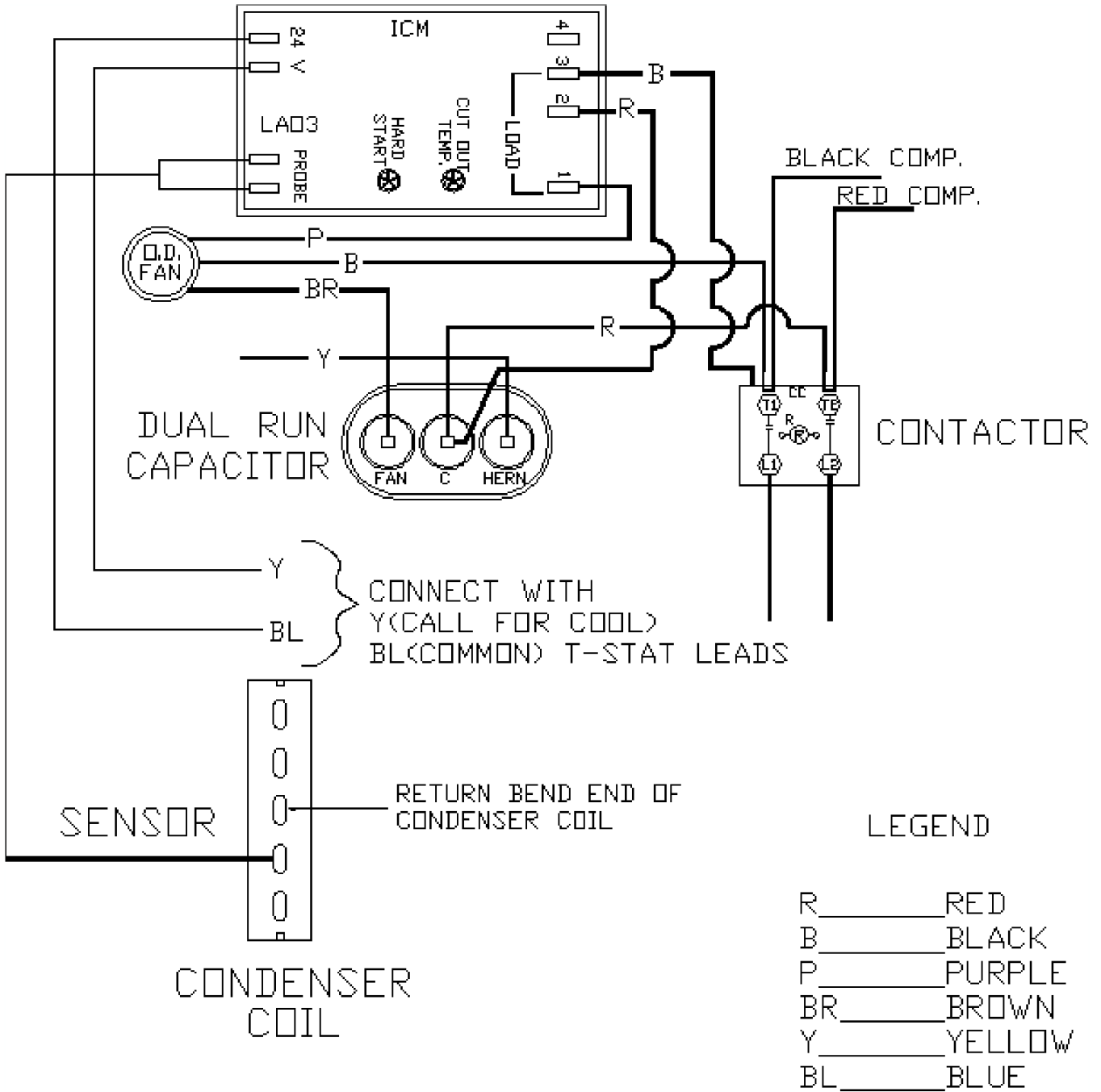


Figure 1

# LA-01 KIT WIRING DIAGRAM FOR COMMERCIAL PACKAGE UNITS

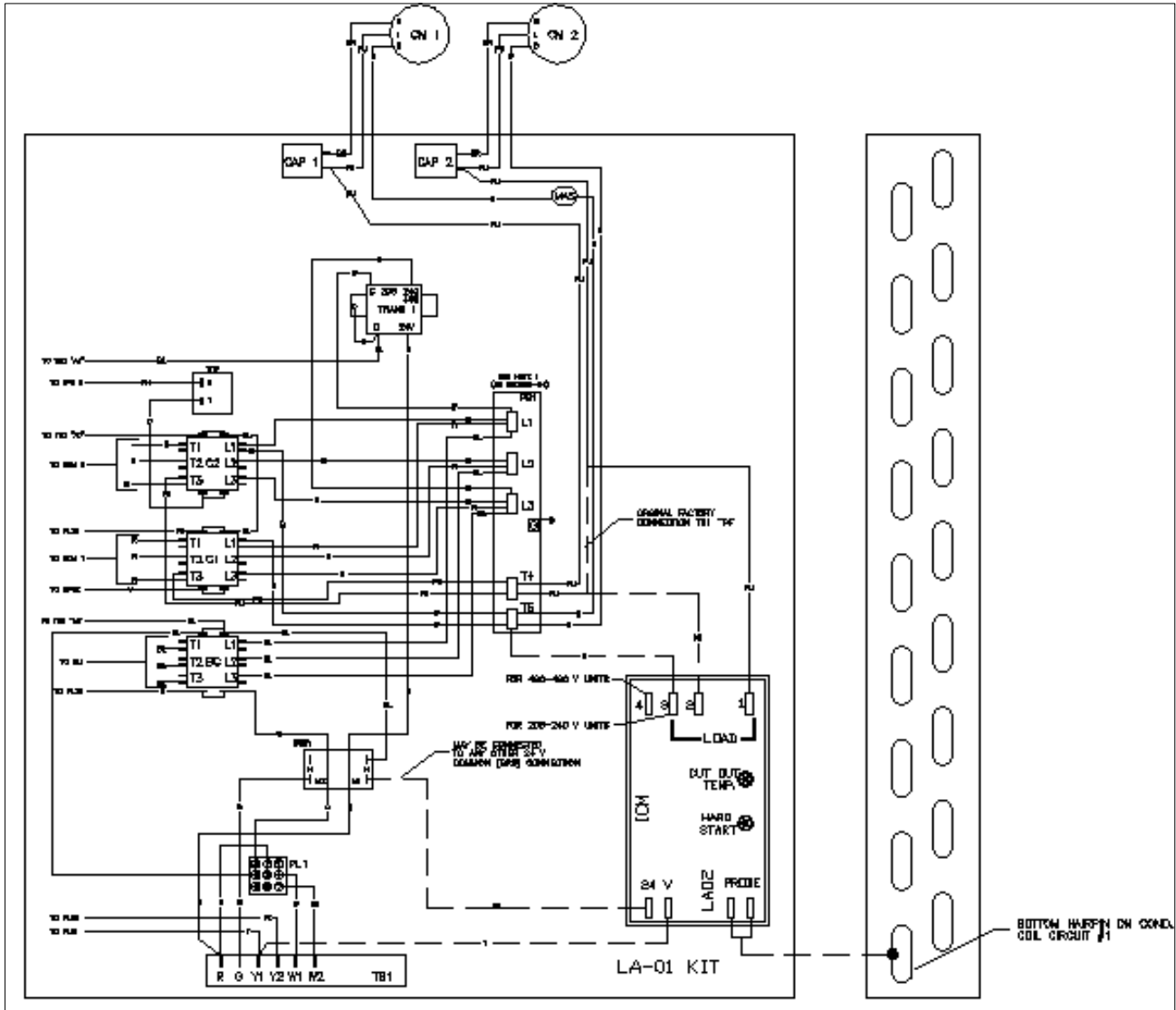


FIGURE 2