

PGJ SERIES

12 SEER

Gas/Electric Packaged Air Conditioning

2 to 4 Ton

Cooling Capacities: 24,000 to 46,000 BTUH
Heating Input Rates: 46,000 to 92,000 BTUH



The high-efficiency, self-contained PGJ packaged gas/electric air conditioner has a simple design that allows for new or retrofit, ground-level or rooftop, side-by-side or downflow applications.

Standard Features

- Revolutionary high-efficiency design utilizing the second generation Electronically Commutated Motor-2 (ECM™ -2) by General Electric
- Provides constant CFM over a wide range of static pressure conditions independent of duct systems
- Sixteen field-selectable airflow settings that can be adjusted to optimize the system CFM for each mode of operation
- Provides low CFM for efficient fan only operation
- Copper tube/aluminum fin coils
- Provides improved humidity control and comfort; additional humidity control is obtained by using a standard humidistat
- Special controls or installation procedures not required
- Totally enclosed, permanently lubricated condenser fan motor
- Blower operation designed for soft start and stop for quieter, more efficient operation; eliminates cold blast of air on heating start up
- Quiet operating top condenser discharge grille
- Hermetically sealed compressor with internal relief valve
- Fully charged R-22 system
- Liquid-line filter drier
- Power-assisted combustion requiring no vent cap
- Aluminized-steel heat exchanger cells
- All models meet Calif. NOX emissions standards
- Direct Spark Ignition system

Cabinet Construction

- Powder-paint finish with 500-hour salt spray approval
- Fully insulated with blankets of fiberglass
- Convenient access panels
- Bottom handling rails
- Watershed base
- When properly anchored, meets the 2001 Florida Building Code unit integrity requirements for hurricane-type winds

Accessories

- L.P. Gas Conversion Kit
- Room thermostat
- High and Low Pressure Switch Kit
- Humidistat
- Roof curb
- Low Ambient Kit
- Concentric converter
- Economizer (horizontal and vertical)
- Manual fresh air damper (0-25%)
- Motorized fresh air damper (0-25%)
- Rectangular to round converter
- Downflow filter rack



PRODUCT SPECIFICATIONS

Specifications

	PGJ024050-1B	PGJ024075-1B	PGJ030050-1B	PGJ030075-1B	PGJ036075-1B	PGJ036100-1B
Total Cooling (BTUH)	24,000	24,000	29,000	29,000	34,400	34,400
Sensible Cooling (BTUH)	18,200	18,200	21,800	21,800	25,800	25,800
Nominal Cooling CFM	800	800	1,000	1,000	1,200	1,200
SEER (2)	12.0	12.0	12.0	12.0	12.0	12.0
EERa (3)	11.0	11.0	11.0	11.0	11.0	11.0
Sound Rating (2)	8.2	8.2	8.2	8.2	8.2	8.2
Heating Input	46,000	69,000	46,000	69,000	69,000	92,000
Heating Capacity	37,700	56,600	37,700	56,600	56,600	75,400
Output Capacity	-	-	-	-	-	-
AFUE (1)	80.0	80.0	80.0	80.0	80.0	80.0
Outdoor S.S. Efficiency	-	-	-	-	-	-
California SEER	77.0	78.0	76.7	77.7	77.3	78.0
Temperature Rise Range	30-60	50-80	25-55	40-70	30-60	45-75
Indoor Blower						
Type	DD	DD	DD	DD	DD	DD
Size (D" x W")	10 x 8	10 x 8	10 x 8	10 x 8	11 x 10	11 x 10
Motor Horsepower	½	½	½	½	1	1
Evaporator Coil						
Face (Ft²)	2.86	2.86	2.86	2.86	4.43	4.43
Fins per Inch	14	14	14	14	14	14
Number of Rows	3	3	4	4	3	3
Outdoor Fan						
Fan Diameter	20"	20"	20"	20"	22"	22"
Motor Horsepower	¼	¼	¼	¼	¼	¼
Condenser Coil						
Face (Ft²)	11.30	11.30	11.30	11.30	14.95	14.95
Fins per Inch	19	19	19	19	19	19
Number of Rows	1	1	1	1	1	1
Electrical						
Ph	1	1	1	1	1	1
Volts	208/230	208/230	208/230	208/230	208/230	208/230
Compressor RLA	10.2	10.2	10.3	10.3	14.4	14.4
Compressor LRA	51.0	51.0	60.0	60.0	82.0	82.0
Indoor Blower FLA	4.0	4.0	4.0	4.0	8.0	8.0
Outdoor Blower FLA	1.8	1.8	1.8	1.8	1.8	1.8
Min. Circuit Ampacity	18.6	18.6	18.7	18.7	27.8	27.8
Max. Fuse Size	30	30	30	30	40	40
Max. HACR Breaker	30	30	30	30	40	40
Net Weight	375	385	380	390	405	410
Shipping Weight (lbs.)	385	395	390	400	415	420

PGJ Models meet California NOX Requirements

- (1) In accordance with D.O.E. Test Procedures
- (2) Certified per ARI 210 and 270
- (3) BTU/Watt @ 80/67 °F inside - 95 °F outside air

PRODUCT SPECIFICATIONS

Specifications (cont.)

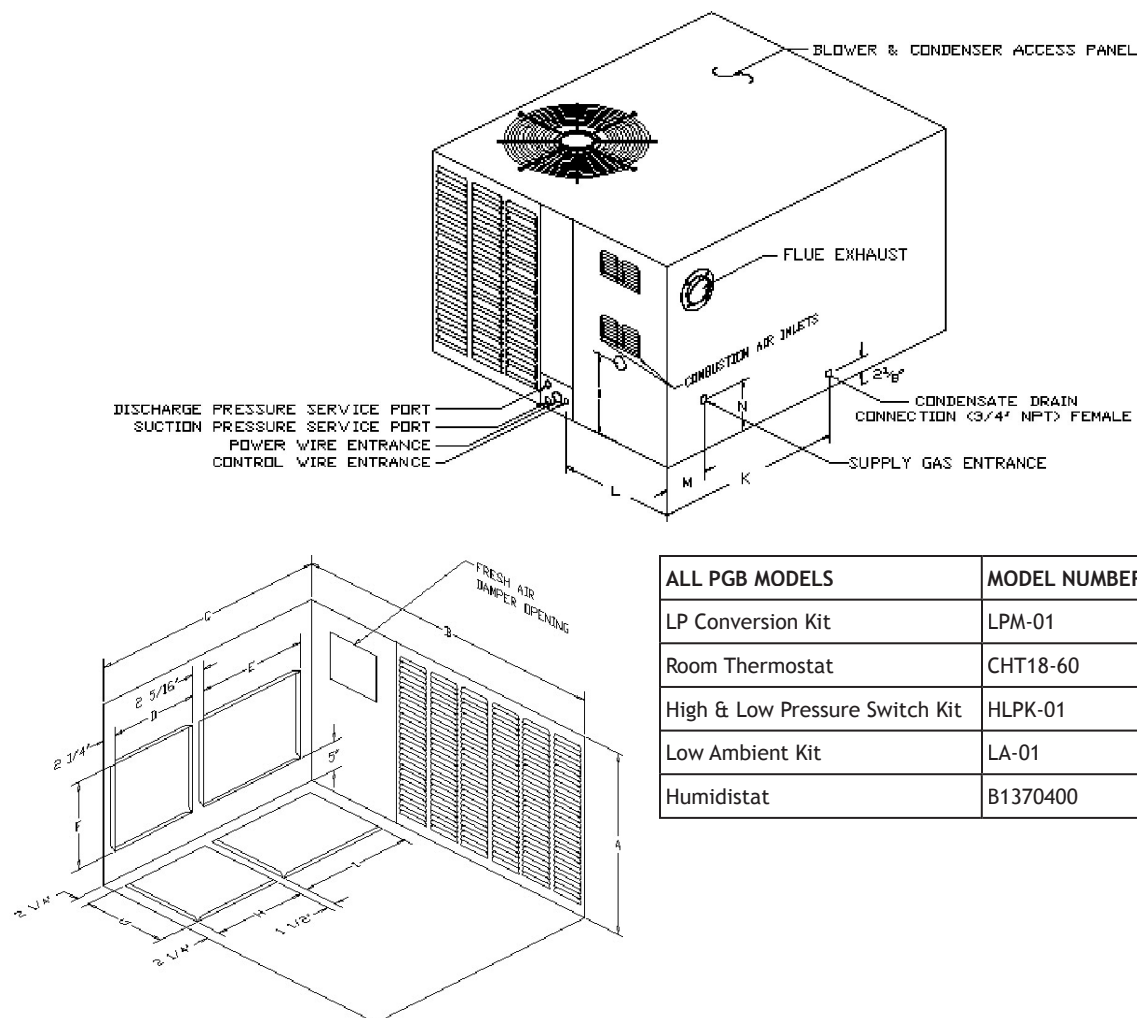
	PGJ042075-1B	PGJ042100-1B	PGJ048075-1	PGJ048100-1
Total Cooling (BTUH)	40,000	40,000	46,000	46,000
Sensible Cooling (BTUH)	31,500	31,500	36,300	36,300
Nominal Cooling CFM	1,400	1,400	1,500	1,500
SEER (2)	12.0	12.0	12.0	12.0
EERa (3)	11.0	11.0	11.0	11.0
Sound Rating (2)	8.4	8.4	8.4	8.4
Heating Input	69,000	92,000	69,000	92,000
Heating Capacity	56,600	75,400	56,600	75,400
Output Capacity	-	-	-	-
AFUE (1)	80.0	80.0	80.0	80.0
Outdoor S.S. Efficiency	-	-	-	-
California SEER	77.3	78.0	76.3	77.2
Temperature Rise Range	30-60	45-75	20-50	30-60
Indoor Blower				
Type	DD	DD	DD	DD
Size (D" x W")	11 x 10	11 x 10	11 X 10	11 X 10
Motor Horsepower	1	1	1	1
Evaporator Coil				
Face (Ft ²)	4.43	4.43	4.43	4.43
Fins per Inch	14	14	14	14
Number of Rows	4	4	4	4
Outdoor Fan				
Fan Diameter	22	22	22	22
Motor Horsepower	¼	¼	⅓	⅓
Condenser Coil				
Face (Ft ²)	14.95	14.95	14.95	14.95
Fins per Inch	19	19	19	19
Number of Rows	1	1	1	1
Electrical				
Ph	1	1	1	1
Volts	208/230	208/230	208/230	208/230
Compressor RLA	16.6	16.6	18.3	18.3
Compressor LRA	95.0	95.0	105.0	105.0
Indoor Blower FLA	8.0	8.0	8.0	8.0
Outdoor Blower FLA	1.8	1.8	2.4	2.4
Min. Circuit Ampacity	30.6	30.6	33.3	33.3
Max. Fuse Size	40	40	50	50
Max. HACR Breaker	40	40	50	50
Net Weight	405	410	470	480
Shipping Weight (lbs.)	415	420	480	490

PGJ Models meet California NOX Requirements

- (1) In accordance with D.O.E. Test Procedures
- (2) Certified per ARI 210 and 270
- (3) BTU/Watt @ 80/67 °F inside - 95 °F outside air

PRODUCT SPECIFICATIONS

Dimensional Data

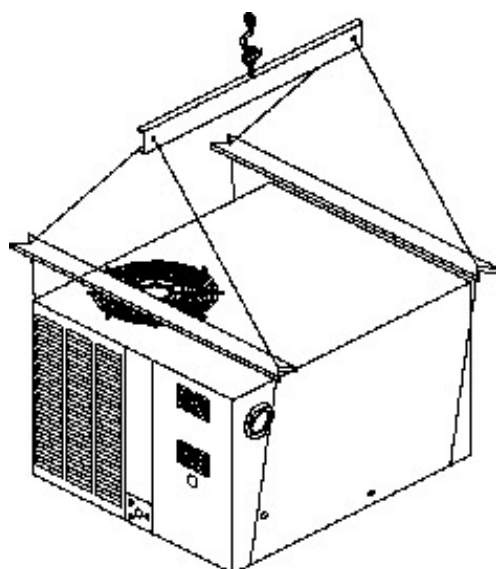


ALL PGB MODELS	MODEL NUMBERS
LP Conversion Kit	LPM-01
Room Thermostat	CHT18-60
High & Low Pressure Switch Kit	HLPK-01
Low Ambient Kit	LA-01
Humidistat	B1370400

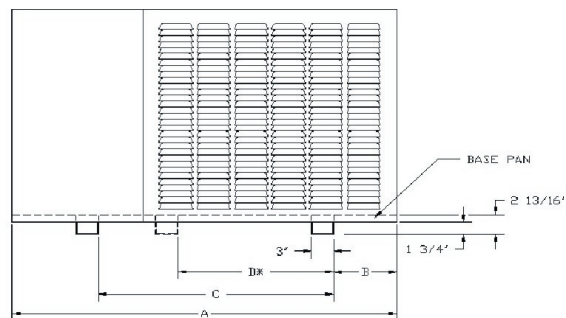
DIMENSIONS	CHASSIS #2	CHASSIS #3
	PGJ024050-1B PGJ024075-1B PGJ030050-1B PGJ030075-1B	PGJ036075-1B PGJ036100-1B PGJ042075-1B PGJ042100-1B PGJ048075-1 PGJ048100-1
A	31 $\frac{1}{8}$ "	33 $\frac{5}{8}$ "
B	52"	55 $\frac{5}{8}$ "
C	43 $\frac{3}{4}$ "	58 $\frac{1}{8}$ "
D	16 $\frac{3}{8}$ "	24 $\frac{5}{8}$ "
E	20 $\frac{3}{8}$ "	26 $\frac{5}{8}$ "
F	15"	17"
G	15 $\frac{1}{4}$ "	17 $\frac{1}{4}$ "
H	16 $\frac{3}{4}$ "	25"
I	20 $\frac{3}{4}$ "	27"
K	30"	32 $\frac{1}{2}$ "
L	18 $\frac{3}{8}$ "	27 $\frac{3}{4}$ "
M	7"	7 $\frac{1}{4}$ "
N	7 $\frac{5}{8}$ "	10 $\frac{1}{8}$ "
O	12 $\frac{3}{8}$ "	14 $\frac{7}{8}$ "

PRODUCT SPECIFICATIONS

Accessory Model Identification

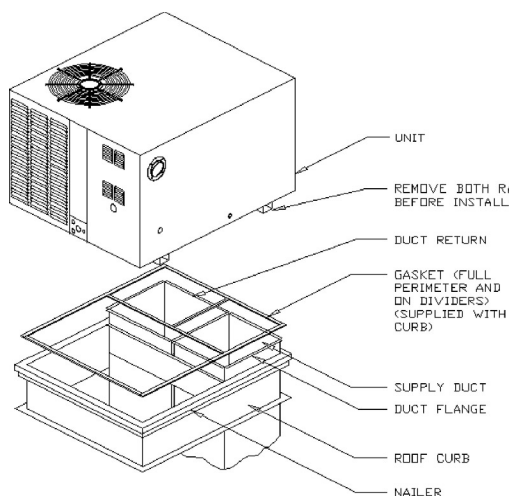


Lifting Detail
Figure 3

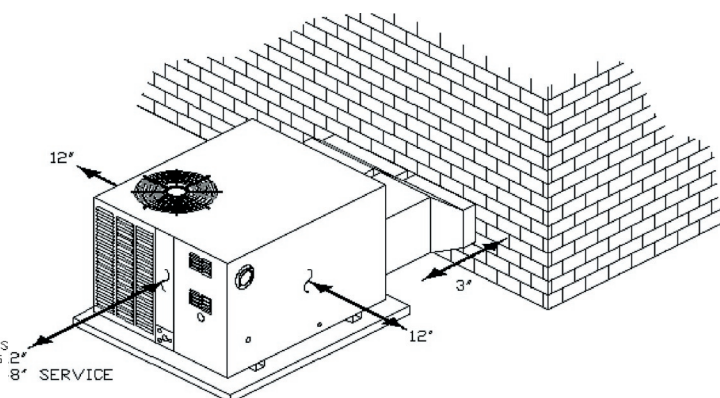


Base Rail Detail
Figure 4

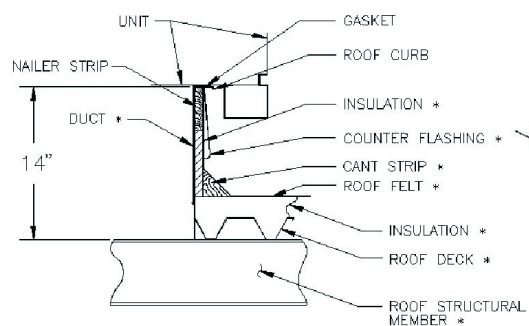
UNIT	A	B	C	D
CHASSIS #2	52"	9"	31 $\frac{3}{4}$ "	21 $\frac{1}{16}$ "
CHASSIS #3	55 $\frac{5}{8}$ "	8"	35 $\frac{1}{4}$ "	23"



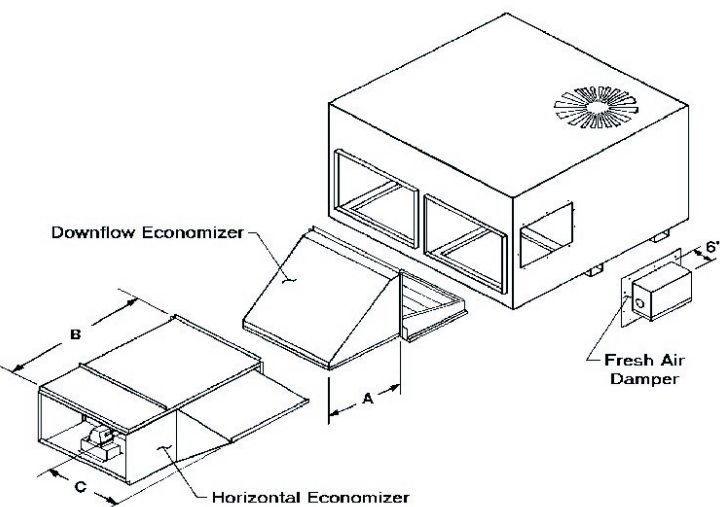
Roof Curb
Figure 5



Outside Slab Installation
Figure 6



Roof Curb Detail
Figure 7



Economizer & Fresh Air Damper (Optional)
Figure 8

UNIT	A	B	C
CHASSIS #2	19"	35"	15 $\frac{13}{16}$ "
CHASSIS #3	22"	42"	17 $\frac{3}{16}$ "

PRODUCT SPECIFICATIONS

Evaporator Blower Specifications

PGJ024 - 050 (XXX)-1B

		COOLING CFM	GAS HEATING CFM
PGJ030050 (075) -1B	A	1000	850
PGJ030050 (075) -1B	B	1000	850
PGJ024050 (075) -1B	C	800	775
PGJ024050 (075) -1B	D	800	775

PGJ036 - 048 (XXX)-1B

		COOLING CFM	GAS HEATING CFM
	A	1850	1700
PGJ048075 (100) -1A	B	1500	1450
PGJ042075 (100) -1B	C	1400	1150
	D	1200	1150

"FAN ONLY"

"HUMIDISTAT"

"ADJUST" C

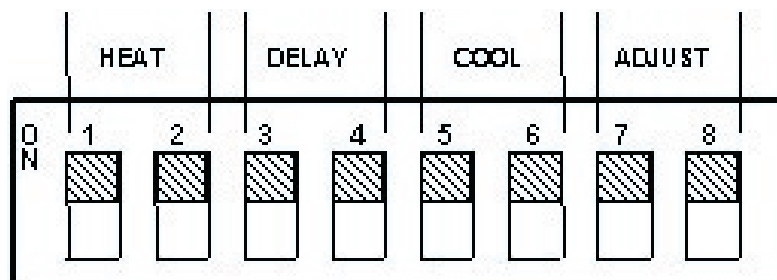
"ADJUST" B

CFM of select mode X 30%

CFM of selected mode X 75%

Decreases selected speed by 15%

Increases selected speed by 10%



	HEAT		DELAY ^F		COOL		ADJUST	
A	OFF	OFF	OFF	OFF	OFF	OFF	OFF	OFF
B	ON	OFF	ON	OFF	ON	OFF	ON	OFF
C	OFF	ON	OFF	ON	OFF	ON	OFF	ON
D	ON	ON	ON	ON	ON	ON	ON	ON
	1	2	3	4	5	6	7	8
DIP SWITCH NUMBER								

F= Factory Setting

NOTE: The ECM-2 Motor Speed Taps are located on the blower scroll in the return air compartment of the equipment. The design CFM is factory set. If additional adjustments are required for each particular application, adjustments can be made at the variable speed terminal block taps as shown above. Refer to IO-569 for additional information on the ECM-2 Motor and speed taps.

PRODUCT SPECIFICATIONS

Accessory Nomenclature

SQRPG - 2

CHASSIS SIZE

#2 - MEDIUM CHASSIS

#3 - LARGE CHASSIS

UNIT TYPE

PGC - ROOF CURB

PGED - ECONOMIZER, DOWNFLOW

PGEH - ECONOMIZER, HORIZONTAL

PGMD - MANUAL DAMPER

PGMDM - MOTORIZED DAMPER

SQRPG - SQUARE TO ROUND CONVERTER

CDK - CONCENTRIC CONVERTER (FLUSH MOUNT)

PGFR - FILTER RACK, DOWNFLOW

Accessory Selection Table

MODEL	DESCRIPTION	CHASSIS #2	CHASSIS #3
PGC-2	Roof curb	•	
PGC-3	Roof curb		•
PGED-2	Downflow economizer	•	
PGED-3	Downflow economizer		•
PGEH-2	Horizontal economizer	•	
PGEH-3	Horizontal economizer		•
PGMD1-3	Manual fresh air damper	•	•
PGMDM1-3	Motorized fresh air damper	•	•
SQRPG-2	Square to round converter	•	
SQRPG-3	Square to round converter		•
CDK1-2	Concentric converter	•	
CDK-3	Concentric converter		•
PGFR-2	Downflow filter rack	•	
PGFR-3	Downflow filter rack		•

NOTES:

1) See Figures 5, 7 and 8 on page 5 for details.

2) See page 4 for chassis dimensions table.

PRODUCT SPECIFICATIONS

Model Identification

PGJ 036 075 - 1 B

ENGINEERING REVISION

ELECTRIC DESIGNATOR

1 = 208 / 230V, 1PH, 60HZ

NOMINAL HEATING CAPACITY
(INPUT)

050 = 46,000 BTUH

075 = 69,000 BTUH

100 = 92,000 BTUH

NOMINAL COOLING
CAPACITOR

024 = 24,000 BTUH

030 = 30,000 BTUH

036 = 36,000 BTUH

042 = 42,000 BTUH

048 = 48,000 BTUH

UNIT TYPE

PGJ=PACKAGE GAS (12 SEER)

(ALL UNITS ARE DIRECT DRIVE)



Goodman Manufacturing Company, L.P., reserves the right to discontinue, or change at any time, specifications or designs without notice or without incurring obligations.
Copyright © 2003 Goodman Manufacturing Company, L.P. • Houston, Texas • Printed in the USA. • Goodman products are made proudly in the USA.