

HEAT CONTROLLER, INC.

HAGV AIR HANDLER WITH OPTIONAL ELECTRIC HEAT 1½ - 5 TONS

Matched to HCI Condensers & Heat Pumps
Can reach 13-14 SEER when properly matched

Multi-Position Design

Ships upflow, horizontal-left and can be easily converted to horizontal-right airflow without additional parts

Drain Pan Flexibility

Durable, non-corrosive drain pans have primary and 3/4" secondary openings for right or left connections, meets ASHRAE standard for IAQ

Factory Installed A-Coil

Units are A/C ready with installed coil equipped with R-410A thermal expansion valve

Blower Time Delay Relay

Increases cooling efficiency

Slide-Out Blower Assembly

Speeds service and maintenance

Cabinet Insulation

Reduces blower motor noise

Installation Convenience

Can be installed with zero clearance to combustible materials (30" front clearance required for maintenance)

Refrigeration Coil Connections

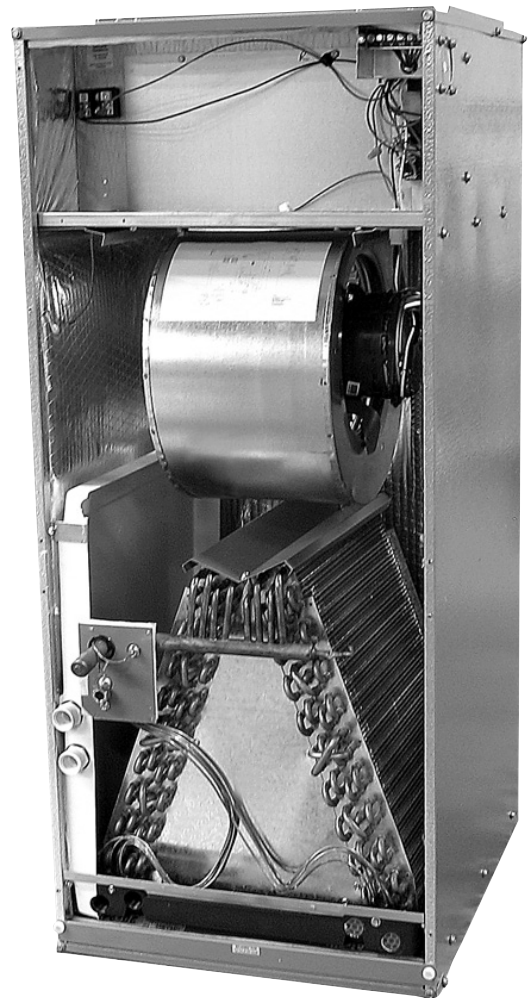
Swaged and factory sealed to maintain nitrogen holding charge

Durable Cabinet

22 gauge galvanized steel cabinet for maximum corrosion protection

Electric Heat

Heater kits are available for all HAGV models



**HAGV AIR HANDLER
208/240V
For R-410A**

The HAGV Series uses an ECM (Electronically Commutated Motor) to run the blower. These brushless DC motors with built-in inverters are ultra-high efficiency for lower operating costs. They are also quieter than PSC motors.



HAGV AIR HANDLER SPECIFICATIONS

208/240V

CONDENSING UNITS	AIR HANDLER	NOMINAL TONS	SEER	EER	COOLING CAPACITY (BTU/H)	REQUIRED CFM
RSG1318	HAGV24-00-1A	1.5	14.0	12.00	18,000	600
RSG1324	HAGV24-00-1A	2.0	14.0	11.80	23,800	800
RSG1330	HAGV36-00-1A	2.5	14.0	12.00	29,200	1000
RSG1336	HAGV36-00-1A	3.0	14.0	12.00	36,000	1200
RSG1342	HAGV48-00-1A	3.5	14.0	12.00	42,000	1400
RSG1348	HAGV48-00-1A	4.0	14.0	12.00	48,000	1600
RSG1360	HAGV60-00-1A	5.0	13.5	11.85	55,000	2000
RSG1418	HAGV24-00-1A	1.5	15.5	13.50	18,000	600
RSG1424	HAGV24-00-1A	2.0	15.5	13.50	24,000	800
RSG1430	HAGV36-00-1A	2.5	15.5	13.00	30,000	1000
RSG1436	HAGV36-00-1A	3.0	14.5	12.90	36,000	1200
RSG1442	HAGV48-00-1A	3.5	15.0	12.90	41,000	1400
RSG1448	HAGV48-00-1A	4.0	15.0	12.90	48,000	1600
RSG1460	HAGV60-00-1A	5.0	14.5	12.90	59,000	2000

HEAT PUMP	AIR HANDLER	NOMINAL TONS	SEER	EER	COOLING CAPACITY (BTU/H)	HEATING CAPACITY (BTU/H)	HSPF	REQUIRED CFM
HRG1318	HAGV24-00-1A	1.5	14.0	12.30	18,000	17,000	7.85	600
HRG1324	HAGV24-00-1A	2.0	14.0	12.05	24,000	23,000	7.95	800
HRG1330	HAGV36-00-1A	2.5	14.0	11.90	29,000	28,000	7.90	1000
HRG1336	HAGV36-00-1A	3.0	14.0	12.00	35,000	34,000	7.95	1200
HRG1342	HAGV48-00-1A	3.5	14.0	12.00	42,000	41,000	7.90	1400
HRG1348	HAGV48-00-1A	4.0	14.0	11.70	48,000	46,000	7.90	1600
HRG1360	HAGV60-00-1A	5.0	13.0	10.90	57,000	56,000	7.70	1800
HRG1418	HAGV24-00-1A	1.5	14.5	12.00	18,000	17,600	8.20	600
HRG1424	HAGV24-00-1A	2.0	14.5	12.00	23,800	22,000	8.60	800
HRG1430	HAGV36-00-1A	2.5	14.5	12.00	29,600	28,000	8.75	1000
HRG1436	HAGV36-00-1A	3.0	14.5	12.00	35,600	34,000	8.75	1200
HRG1442	HAGV48-00-1A	3.5	14.5	12.25	38,000	38,000	8.80	1400
HRG1448	HAGV48-00-1A	4.0	14.5	12.30	47,500	46,000	8.95	1600
HRG1460	HAGV60-00-1A	5.0	14.5	12.35	59,500	58,000	8.50	1800

ELECTRIC AIR HANDLER BLOWER PERFORMANCE

MODEL	MOTOR@240V 60Hz		DWDI BLOWER (DxW)	MOTOR SPEED	CFM @ ESP (in. W.O.) * / ECM MOTOR AMPS				
	HP	AMPS ⁽¹⁾			0.1	0.2	0.3	0.4	0.5
HAGV24-00-1A HAGV36-00-1A	1/2	4.3	10 x 7	A	1422/1.69	1421/1.73	1421/1.79	1416/1.95	1415/2.03
B				1215/1.02	1214/1.11	1214/1.19	1214/1.27	1208/1.39	
C				898/0.58	899/0.64	899/0.71	982/0.78	969/0.85	
D				865/0.44	865/0.51	865/0.57	864/0.64	858/0.69	
HAGV48-00-1A HAGV60-00-1A	3/4	6.8	12 x 9	A	1957/1.90	1919/1.90	1900/2.10	1871/2.30	1847/2.50
B				1576/1.10	1565/1.20	1547/1.40	1517/1.50	1487/1.60	
C				1495/0.80	1482/0.90	1451/1.10	1432/1.20	1409/1.20	
D				1411/0.90	1385/1.00	1372/1.20	1338/1.30	1311/1.40	

NOTES

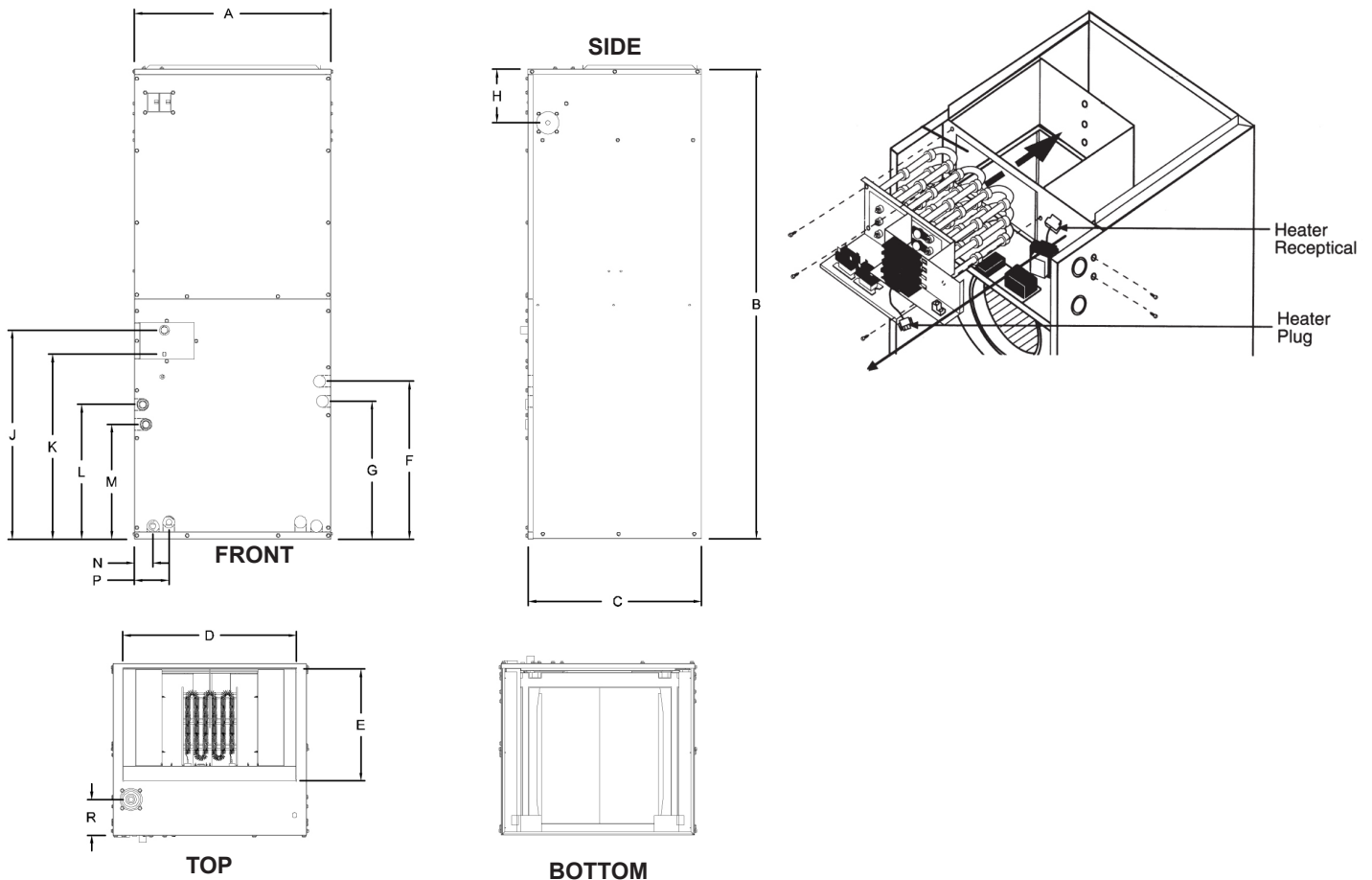
Based upon unit with normal tonnage, dry coil and filter installed.

Use 0.96 as approximate CFM correction factor for wet coil.

(1) Amps based on motor rating plate.

DIMENSIONS (inches)

MODELS	A	B	C	D	E	F	G	H	J	K	L	M	N	P	R
HAGV24-00-1A HAGV36-00-1A	21.00	48.00	21.00	19.00	12.50	14.50	13.00	6.75	20.00	17.00	12.75	10.30	2.30	4.35	5.00
HAGV48-00-1A HAGV60-00-1A	24.50	58.75	21.75	23.35	21.25	19.75	17.25	6.75	26.00	23.00	16.75	14.35	2.30	4.35	4.50



HAGV SPECIFICATIONS

MODEL	REF. CONN. SIZES	FILTER SIZE (IN.)	HEATER kW RANGE	MAX. SHIPPING WT. WITH COIL (lbs.)
HAGV24-00-1A	3/8 x 3/4	16 x 20 x 1	0-10	152
HAGV36-00-1A	3/8 x 3/4	16 x 20 x 1	0-15	152
HAGV48-00-1A	3/8 x 7/8	16 x 20 x 1	0-20	213
HAGV60-00-1A	3/8 x 7/8	16 x 20 x 1	0-20	213

ELECTRIC HEATER KIT SPECIFICATIONS

MODEL	USED WITH	kW@		MINIMUM CIRCUIT AMPACITY		MAX. FUSE OR BREAKER (HACR)	
		240V	208V	240V	208V	240V	208V
N/A	without heat	0	0	5.4	5.4	10	10
7800-305C	HAGV24-00-1A	5	3.8	30.3	26.8	40	40
7800-310C		10	7.5	56.4	49.4	60	60
N/A	without heat	0	0	5.4	5.4	10	10
7800-305D	HAGV36-00-1A	5	3.8	30.3	26.8	40	40
7800-310D		10	7.5	56.4	49.4	60	60
7800-315D		15	11.3	56/30	49/27	60/40	60/35
N/A	without heat	0	0	8.5	8.5	15	15
7800-305E	HAGV48-00-1A HAGV60-00-1A	5	3.8	32.8	29.3	40	35
7800-310E		10	7.5	58.9	51.9	70	60
7800-315E		15	11.3	58.9/3.20	51.9/29.3	70/40	60/35
7800-320E		20	15.0	58.9/58.9	51.9/51.9	70/70	60/60
7800-400	4-Pole Jumper Bar Assembly 15 and 20 kW only						



The coils listed in this brochure are designed for use with R-410A, an environmentally friendly refrigerant. Refrigerants used in the past contained chlorine which, when released to the atmosphere, combined with oxygen molecules from the earth's vital ozone layer, destroying this barrier that protects us from the sun's harmful ultraviolet rays. Soon all CFC and HCFC refrigerants used around the world will be replaced by non-ozone depleting types such as the R-410A already in use in our equipment.

Design, specifications, performance data and materials subject to change without notice.

HEAT CONTROLLER, INC.

1900 Wellworth Ave., Jackson, MI 49203 • Ph. 517-787-2100 • Fax 517-787-9341

THE QUALITY LEADER IN CONDITIONING AIR

www.heatcontroller.com