

SAUERMANN CONDENSATE PUMP INSTALLATION INSTRUCTIONS FOR WHP/WCP 09-36

Part# 240-3351

PUMP SPECIFICATIONS

15 GPH, 4 FT. MAX. LIFT, 50 FT. MAX. HORIZONTAL RUN

SAFETY CONSIDERATIONS

Installing and servicing air-conditioning equipment can be hazardous. Only trained and qualified service personnel should install repair, or service air conditioning equipment.

WARNING: Before removing any access panel, disconnect power to both indoor and outdoor units. Failure to do so could result in serious injury or electric shock.

PARTS INCLUDED

KIT# 550-1009 (115V)

109-4224...Sauer mann Pump Mounting Strap (1)
201-21.....3/8" #8 Screws (2)
207-06.....Wire Ties (2)
240-2215...V" Single Wire Hose Clamp (1)
240-2200...1/2" I.D. x 3/4" O.D. Clear Hose, 8" length (1)
240-255....Small Popcorn Crimps (2)
240-3342...115V Sauer mann Condensate Pump (1)
240-3344...1/4" I.D. x 3/8" O.D. Clear Hose, 5' length (1)
323-003....Insulation Tape, 3" length (!)

KIT# 550-1010 (208/230V)

109-4224...Sauer mann Pump Mounting Strap (1)
201-21.....Screws (2)
207-06.....Wire Ties (2)
240-2215...1/2" Single Wire Hose Clamp (1)
240-2200...1/2" I.D. x 3/4" O.D. Clear Hose, 8" length (1)
240-255....Small Popcorn Crimps (2)
240-3343...208/230V Sauer mann Condensate Pump (1)
240-3344...1/4" I.D. x 3/8" O.D. Clear Hose, 5' length (1)
323-003....Insulation Tape, 3" length (1)

NOTE: Please read the instructions included with the Sauer mann Pump for reference but refer to these instructions for proper unit installation.

TOOLS REQUIRED

Drill Bit-1/4" (1)
Nut Drivers-1/4" (1), 5/16" (1)

INSTALLATION INSTRUCTIONS

1. Disconnect power to BOTH indoor and outdoor units.

NOTE: For EMI Systems, 24v power supply is located in the Condensing Unit.

2. Remove Front Cover. [FIG. 1]

3. Remove Front Cabinet Assembly to expose Control Panel and components. [FIGS. 2, 3]

4. Remove Control Panel. [FIG. 4]

5. Clean inside surface of Control Panel with a 409-type Cleaner and apply Self-Adhesive Mounting Rail (included with Sauer mann Pump). [FIG. 5]

6. Place Sump/Detection Unit in place on the Control Panel as shown. The unit will snap into place. [FIG. 6]

7. Remove the 1/2" Black Drain Hose from the Drain Pan.

8. Using the Single Wire Clamp, mount one end of the 8" x 1/2" I.D. x 3/4" O.D. Drain Hose to the Drain Pan and the other end to the Sump/Detection Unit. [FIG. 7]

9. Cut 6-3/8" section of 1/4" I.D. x 3/8" O.D. Hose and use it to connect the Sump/Detection Unit to the Pump Unit. [FIGS. 8,11,12]

10. Use the template on Page 7 to mark hole locations for mounting the Pump Unit to the Panel. [FIG. 9]

11. Before installing the Pump Unit, adhere the 3" length of Armaflex to the Panel as shown. [FIG. 10]

12. Mount the Pump on top of the Armaflex as shown. [FIGS. 11,13]

NOTE: Pump discharge must point to the top of the unit.

13. Connect additional 1/4" x 3/8" O.D. Hose to discharge of Pump Unit. [FIG. 11]

14. Fasten the Pump Mounting Strap to the unit by using the 2 #8 screws from the outside face of the Panel. [FIG. 12]

NOTE: Be sure the hose is not kinked and all connections are watertight.

15. Route Condensate Hose along the Distributor and secure with wire ties. [FIG. 13]

NOTE: Keep Hose away from all Electrical Components!!

16. Wire the Pump according to the provided Wiring Diagram.

NOTE: For units equipped with Unit-Mounted Digital Controls, use Wire Diagram# 614-1794. For units with optional Remote Wall Thermostat Controls, use Wire Diagram 614-1795.

17. Wire Tie all loose ends.

18. Test the unit to ensure proper operation.

SAUERMANN PUMP INSTALLATION INSTRUCTIONS FOR WHP/WCP 09-36

NOTE: Your model MAY or MAY NOT have a transformer.

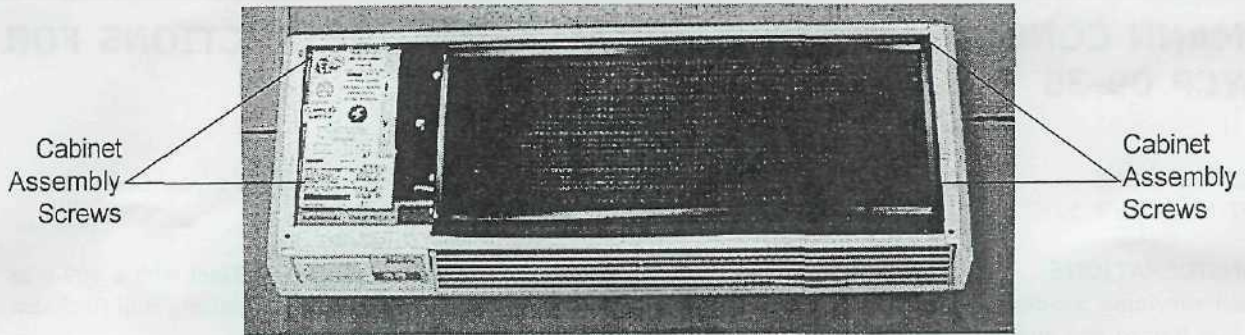


Fig. 1- View Of Unit With Front Cover Removed.

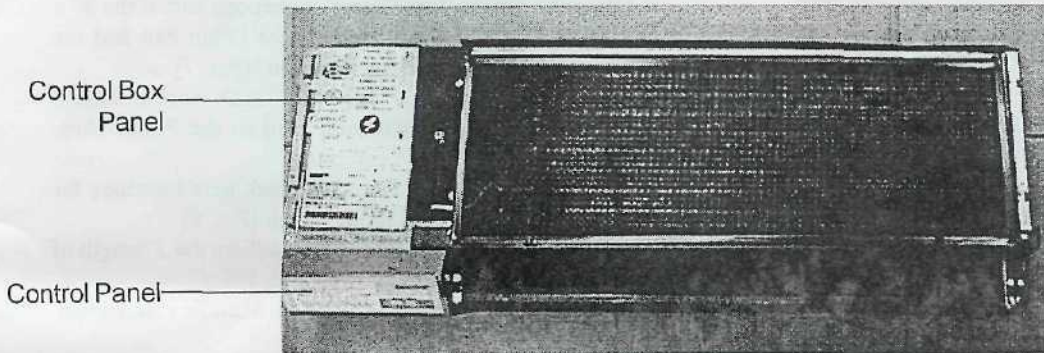


Fig. 2- View Of Unit With Cabinet Assembly Removed.

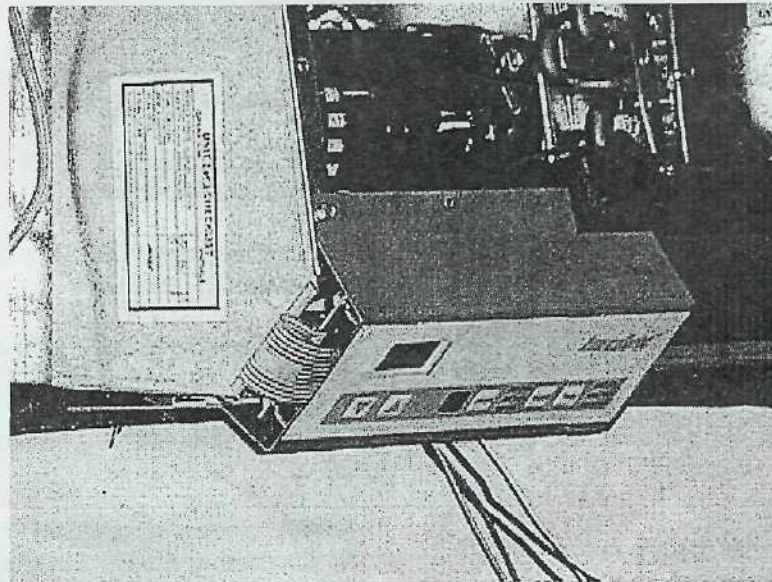


Fig. 3- View Of Unit With Control Panel And Components Exposed.

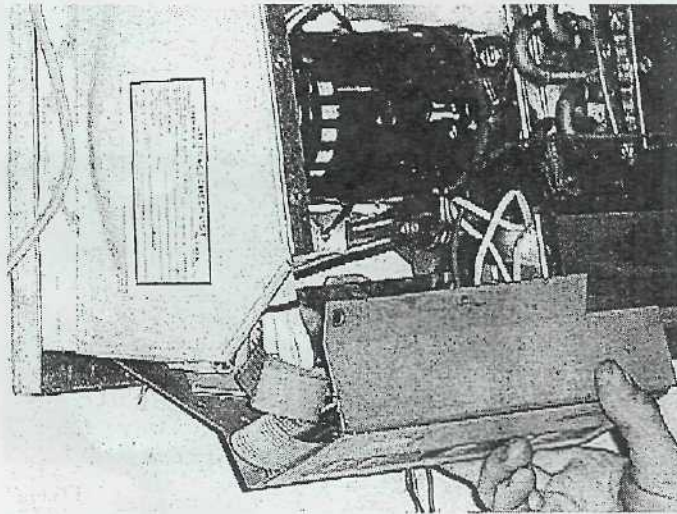


Fig. 4- Remove Control Panel.

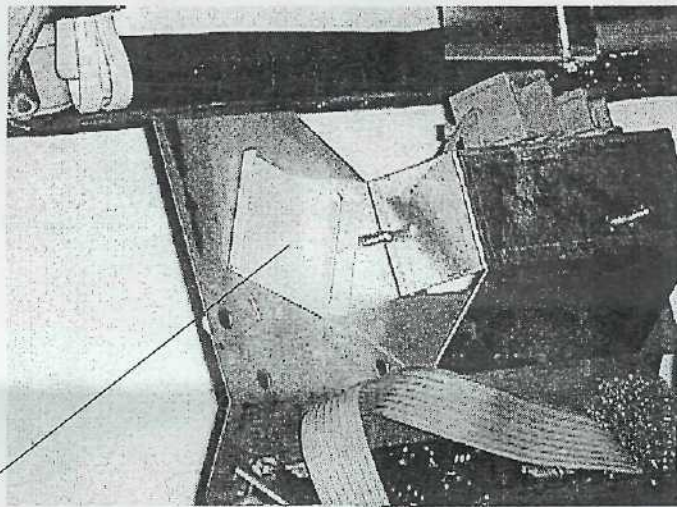


Fig. 5- Self-Adhesive Mounting Rail Applied.

These parts
included
with
Sauermann
Pump

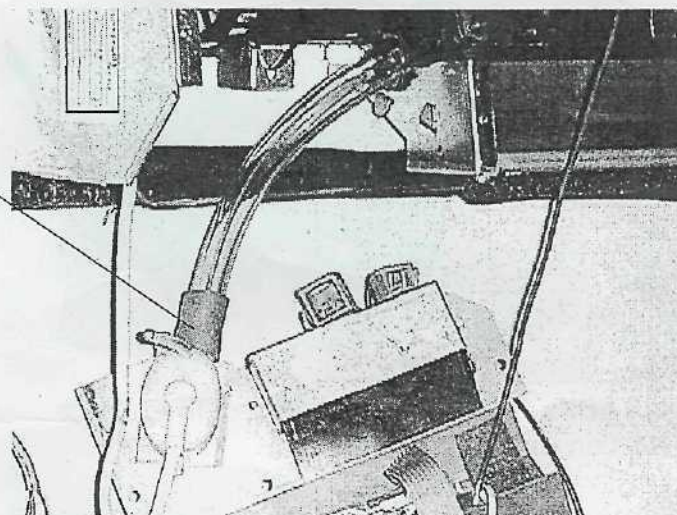


Fig. 6- Sump/Detection Unit Installed On Control Panel.

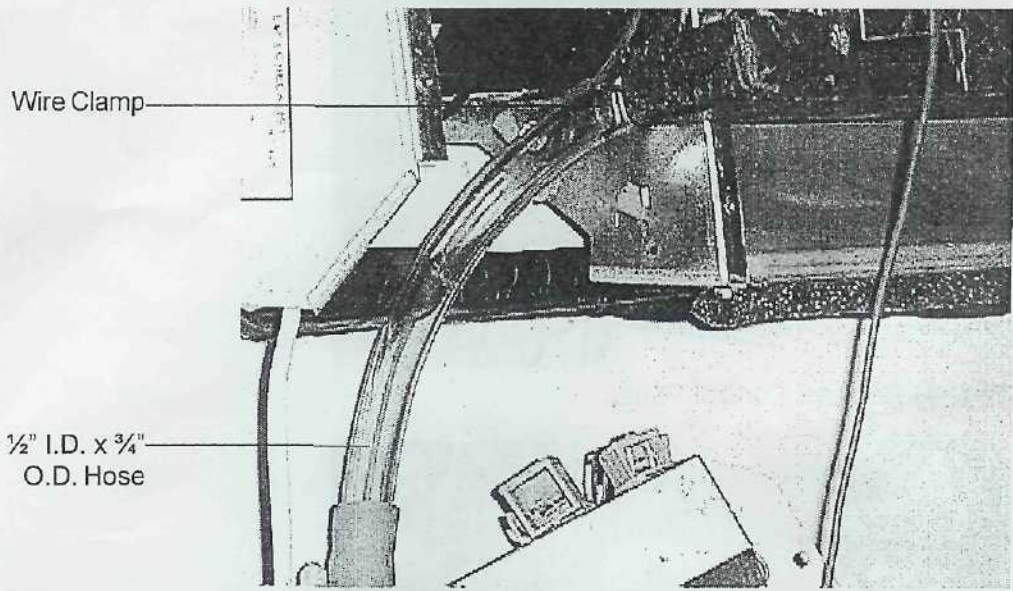


Fig. 7- 8" x 1/2" I.D. x 3/4" O.D. Drain Hose Mounted To Drain Pan And Sump/Detection Unit With Single Wire Clamp.

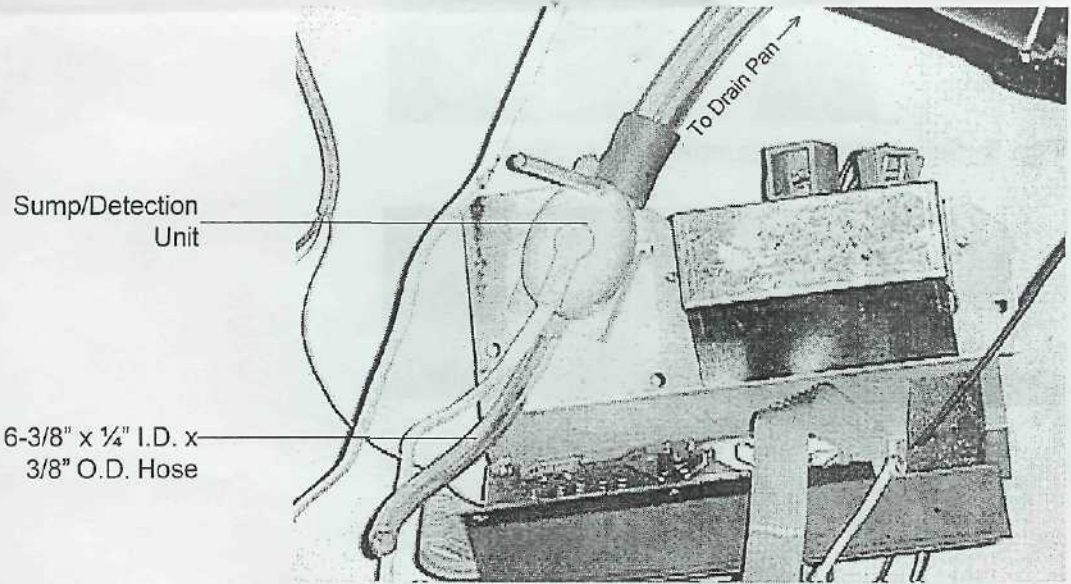


Fig. 8- 1/4" I.D. x 3/8" O.D. Hose Added To Connect Sump/Detection Unit To Pump Unit.

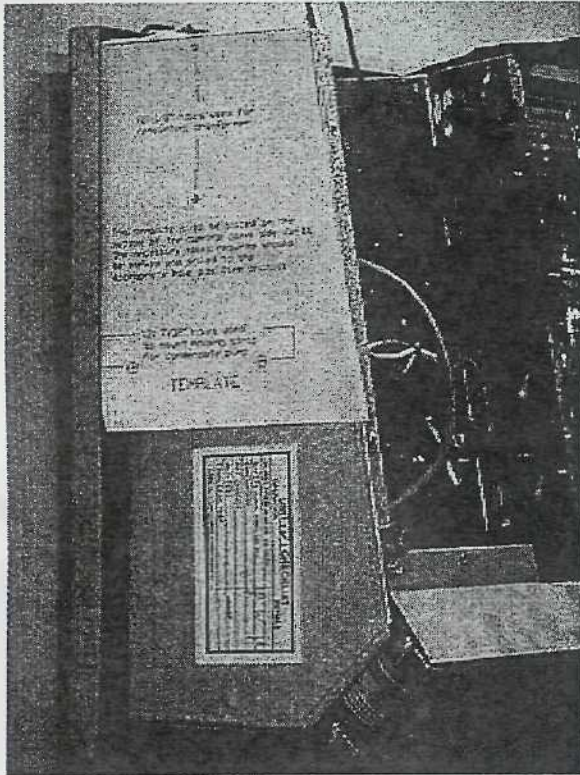


Fig. 9- Proper Use Of Template#1 For Mounting Pump Unit To Panel.

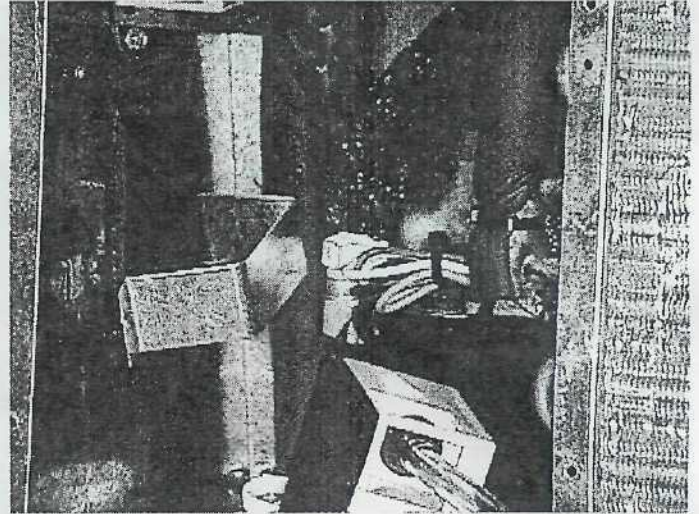
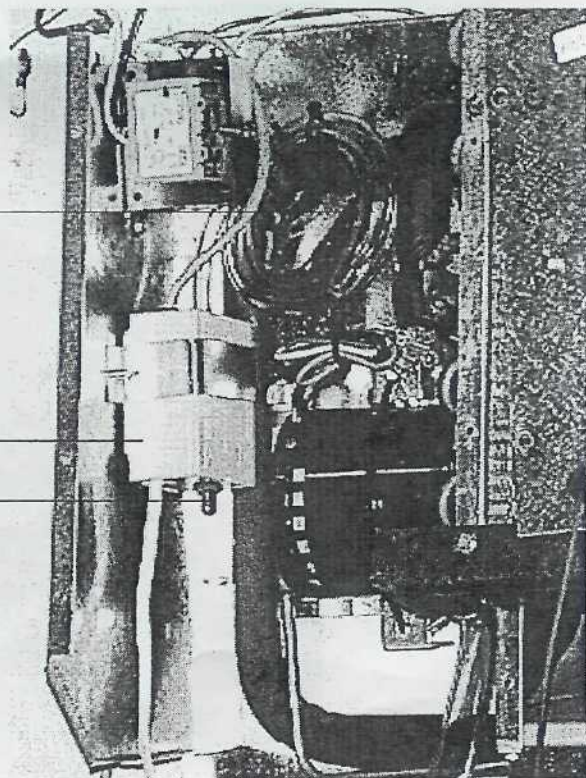


Fig. 10- 3" Length Of Armaflex Adhered To Panel Prior To Pump Unit Installation.



1/4" I.D. x 3/8" O.D.
Drain Hose

Pump Unit

Connect 1/4" I.D. x 3/8" O.D.
Hose from Sump/Detection
Unit to Pump

Fig. 11- View Of Pump Mounted On Unit.

Pump Unit
 $\frac{1}{4}$ " I.D. x $\frac{3}{8}$ " O.D. Hose
from Sump/Detection Unit
to Pump

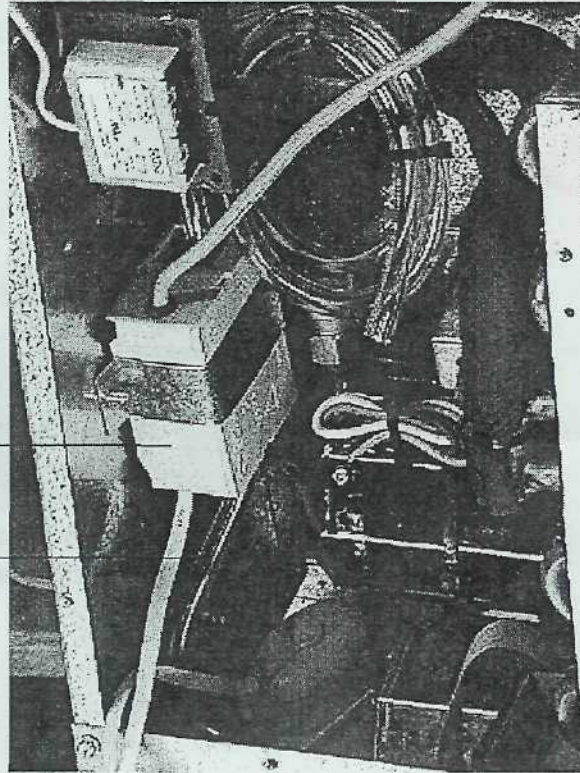


Fig. 12- Fasten Pump Mounting Strap To Unit With Screws From Panel.

Wire Tie

Wire Tie

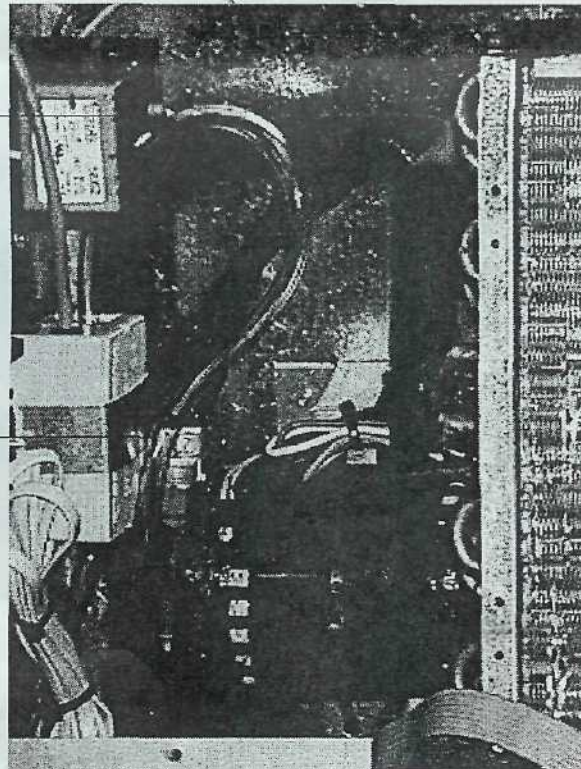
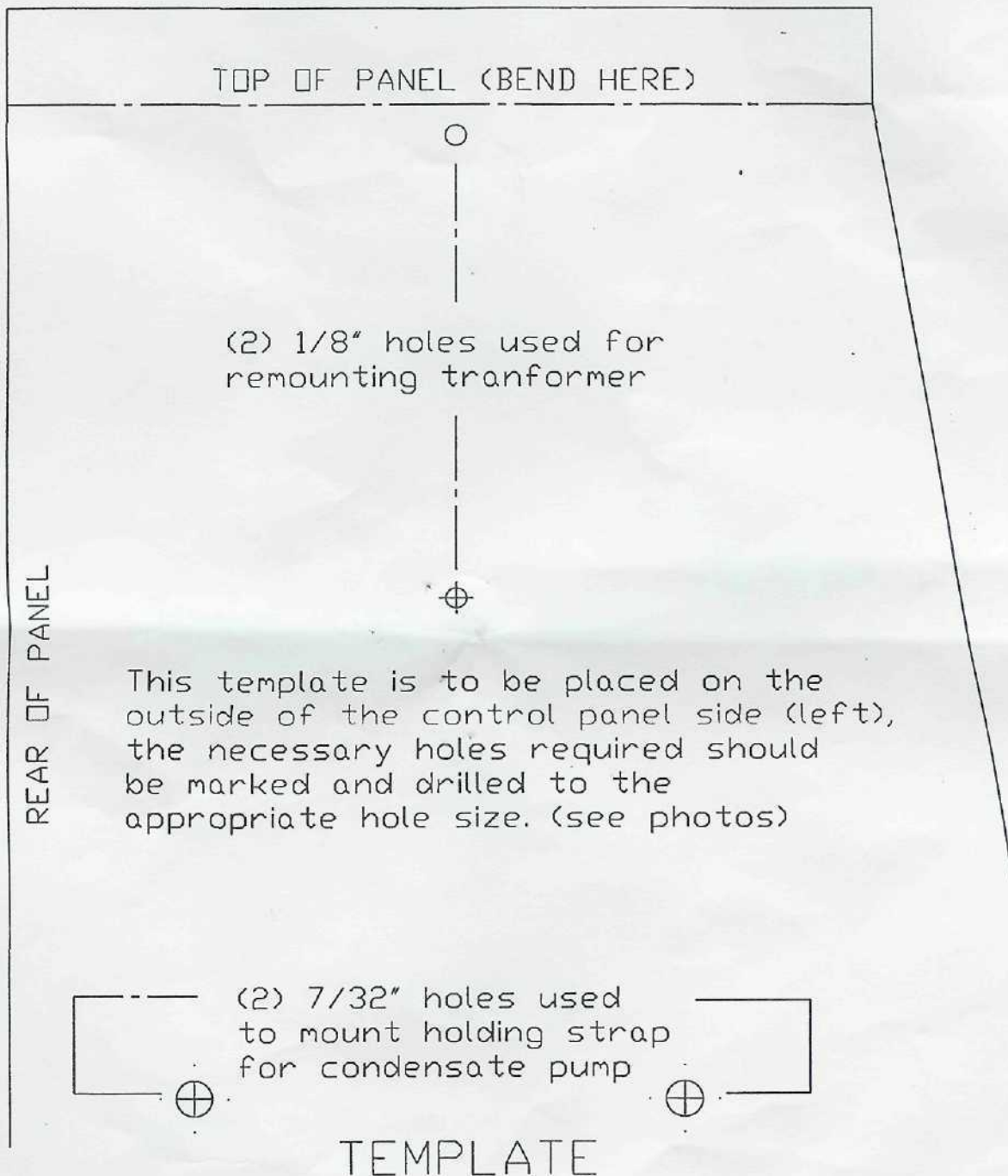


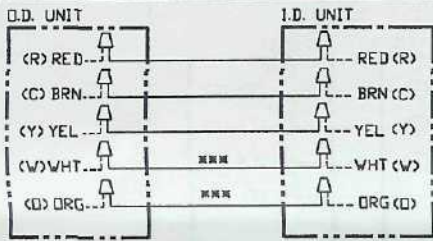
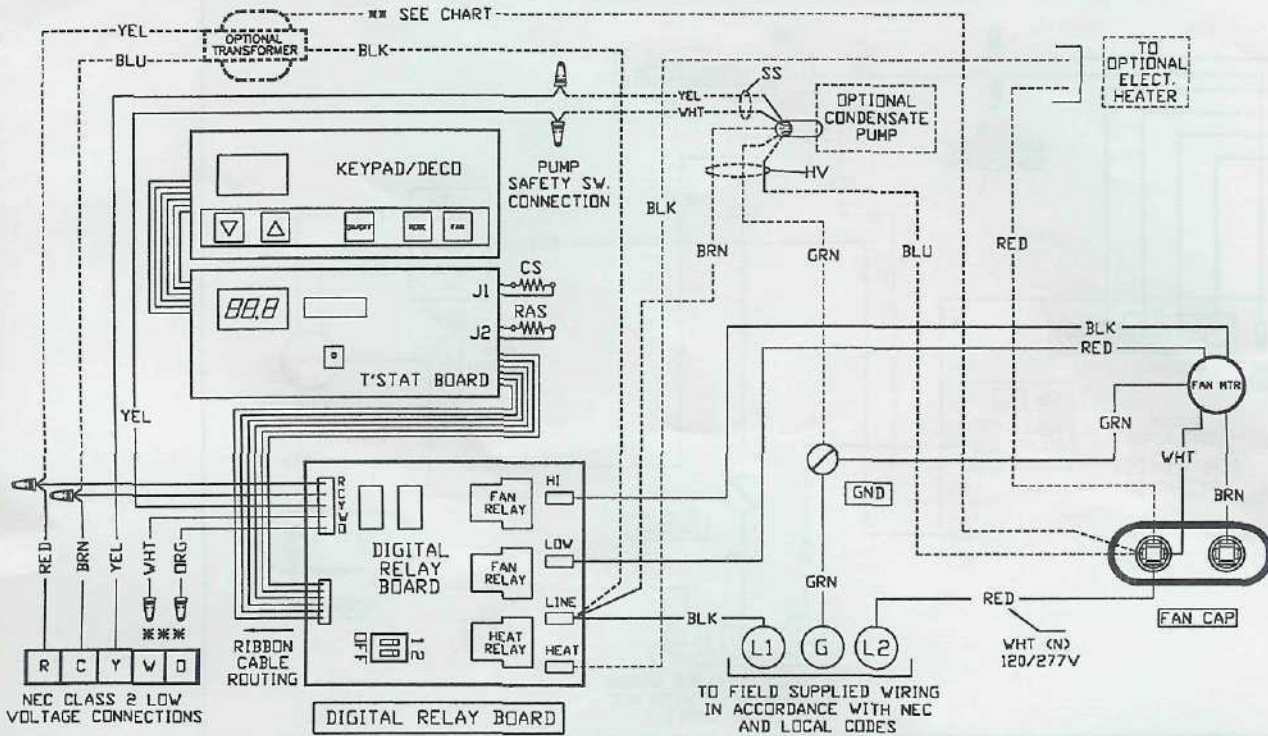
Fig. 13- Route Drain Hose Along Distributor Through Back Of Unit & Keep Away From All Electrical Components.

SAUERMANN PUMP INSTALLATION INSTRUCTIONS

(TEMPLATE#1)



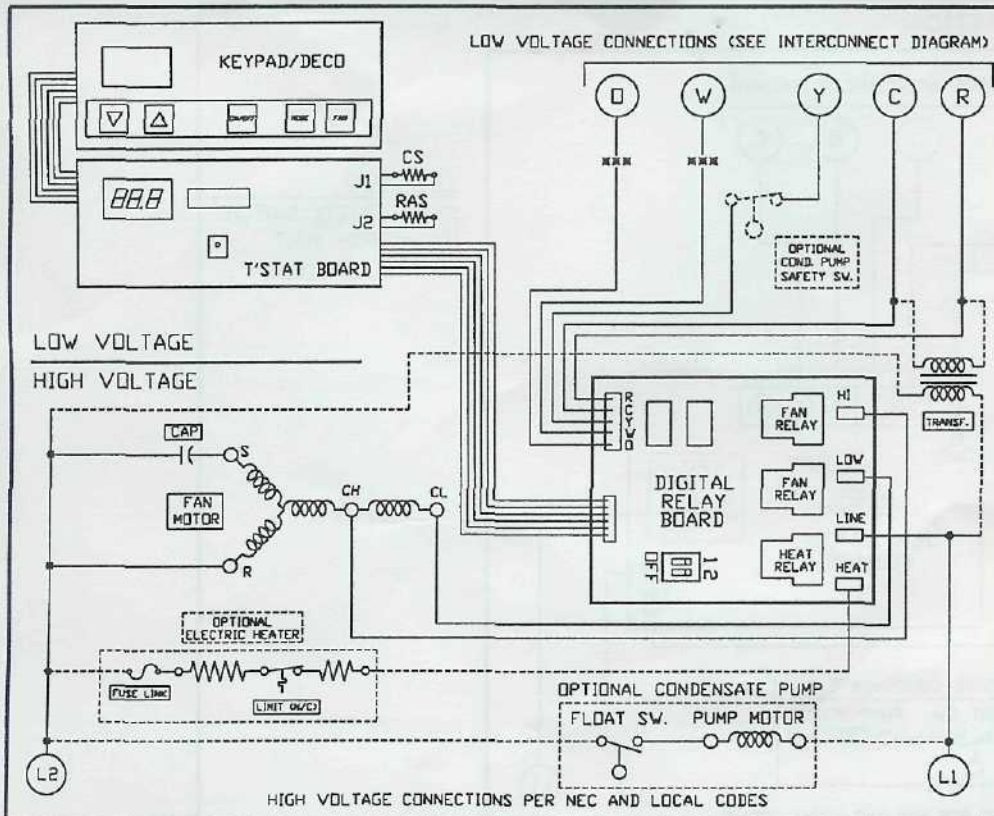
WHP,B/C 12-36 W/ U/M CONTROLS, (OPTIONAL ELECT. HEAT, COND. PUMP AND TFMR.)



DIP SWITCH SETTINGS

SWITCH	1	2
COOLING ONLY	OFF	OFF
COOL/ELECT.	ON	ON
ALL HEAT PUMPS	OFF	ON

WIRING SCHEMATIC



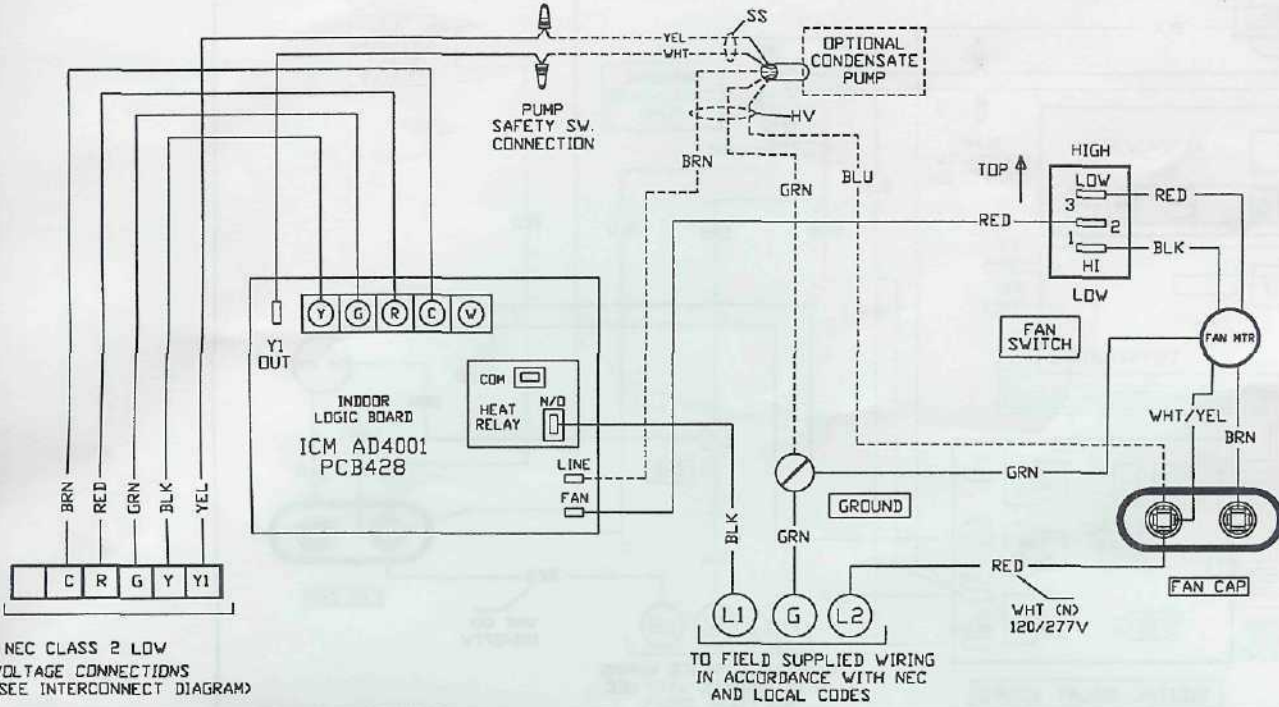
LEGEND

SS = SAFETY SWITCH
 HV = HIGH VOLT
 CS = COIL SENSOR
 RAS = ROOM AIR SENSOR
 --- = OPTIONAL

*** OPTIONAL TRANSFORMER WIRING

RED = 208 VOLT
 ORG = 230 VOLT
 BRN = 265 VOLT

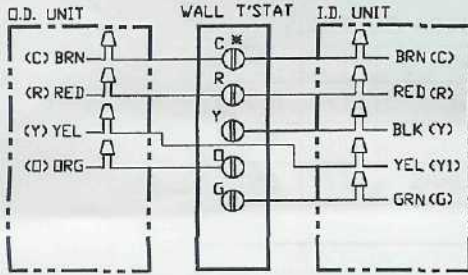
WHP W/ REMOTE T'STAT AND OPTIONAL CONDENSATE PUMP



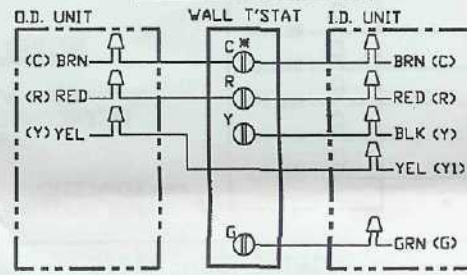
HEAT PUMP

LOW VOLTAGE INTERCONNECT DIAGRAM

STRAIGHT COOL



*SOME T'STATS MAY NOT HAVE A 'C' TERMINAL



WIRING SCHEMATIC

