



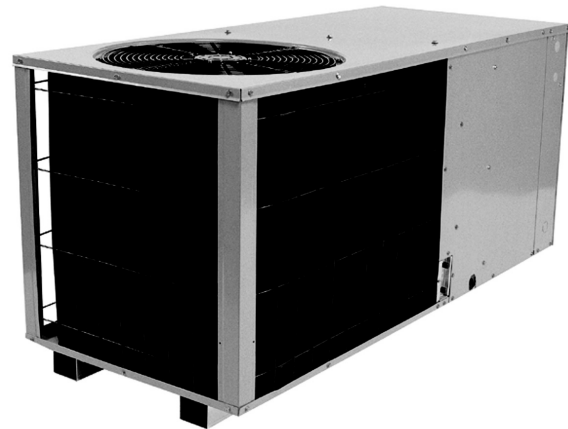
Air Conditioning & Heating

**PCK SERIES**  
**10 SEER**

**Self-Contained Packaged**  
**Air Conditioner**

**2 to 5 Ton**

Cooling Capacity: 23,200 - 58,000 BTUH



*The PCK self-contained, packaged air conditioner allows for side-by-side ground-level or rooftop application and is approved for manufactured and modular homes.*

**Standard Features**

- Convenient access panels
- Two-speed evaporator blower motor; low-speed for normal or low-static application, high-speed for high-static application in manufactured homes
- Quiet operating top grille condenser discharge
- Copper tube, aluminum fin coil
- Totally enclosed, permanently lubricated condenser fan motor
- Hermetically sealed compressor with internal relief valve
- Fully charged R-22 system
- Liquid line filter drier
- High-efficiency performance
- Bottom pan rails elevate the unit above the slab

**Cabinet Construction**

- Powder-paint finish with 500-hour salt spray approval
- Fully insulated air handling compartment
- When properly anchored, meets the 2001 Florida Building Code unit integrity requirements for hurricane-type winds

**Accessories**

- Roof curb
- Downflow Plenum (includes filter rack)
- Manual fresh air damper (to be used with Downflow Plenum)
- Economizer (to be used with Downflow Plenum)
- Square to Round Duct Converter for Round Duct applications (Horizontal and Downflow)
- Elbow and Flashing Downflow Kit
- Room Thermostat (CHT18-60)
- Outdoor Thermostat (OT18-60)
- Heat Kit from 5 to 20 kW with plug-in connection

**Accessory Heat Kit Features**

- Controlled by sequencers for better temperature control (single-phase units only)
- Control circuitry arranged to readily permit staging (HK10,15, 20-1 only)
- Primary and secondary limit protection
- Rust-resistant nickel chromium heating elements
- Factory-installed circuit breakers on certain models (see Electrical Data)



# PRODUCT SPECIFICATIONS

## Specifications

	PCK024-1A	PCK030-1A	PCK036-1A	PCK036-3B	PCK042-1A
<b>Total Cooling-BTUH</b>	23,200	28,400	35,000	35,000	42,000
<b>Sens. Cooling-BTUH</b>	16,800	20,600	25,600	25,600	32,000
<b>SEER (1)</b>	10.0	10.0	10.0	10.0	10.0
<b>EER<sub>s</sub> (2)</b>	9.0	9.0	9.0	9.0	9.0
<b>Sound Rating(bels)</b>	8.0	8.0	8.0	8.0	8.4
<b>Indoor Blower</b>					
Type	DD	DD	DD	DD	DD
Size - D x W	9 x 6	9 x 6	9 x 6	9 x 6	9 x 8
Motor H.P.	1/5	1/3	1/3	1/3	1/3
<b>Evaporator Coil</b>					
Face Area (ft <sup>2</sup> )	3.33	3.33	3.33	3.33	5.25
Fin/In.	14	14	14	14	14
No. of Rows	2	2	3	3	3
<b>Outdoor Fan</b>					
Fan Dia. (In.)	18	18	18	18	22
Motor H.P.	1/6	1/6	1/6	1/6	1/4
<b>Condenser Coil</b>					
Face Area (ft <sup>2</sup> )	12.1	12.1	12.1	12.1	14.7
Fin/In.	19	19	19	19	19
No. of Rows	1	1	1	1	1
<b>Electrical</b>					
Ph	1	1	1	3	1
Volts	208/230	208/230	208/230	208/230	208/230
Compr. RLA	9.8	13.8	16.2	10.3	17.1
Compr. LRA	56.0	75.0	96.0	75.0	105.0
Indoor Blw FLA	1.7	2.6	2.6	2.6	2.6
Outdoor Blw FLA	1.0	1.0	1.0	1.0	1.6
Min. Circuit Amp.	15.0	20.9	23.9	16.5	25.6
M.O.P. (3)	20	30	40	20	40
<b>Net Weight</b>	240	245	265	265	335
<b>Shipping Weight</b>	255	260	280	280	350

(1) Certified per ARI 210

(2) BTU/Watt @ 80/67 °F inside - 95 °F outside air

(3) M.O.P. (Maximum Overcurrent Protection)

Note - May use fuses or HACR type Circuit Breakers of the same size as noted

## PRODUCT SPECIFICATIONS

### Specifications (cont.)

	PCK048-1A	PCK048-3A	PCK060-1	PCK060-3	PCK060-4
<b>Total Cooling-BTUH</b>	46,000	46,000	58,000	58,000	58,000
<b>Sens. Cooling-BTUH</b>	35,800	35,800	43,500	43,500	43,500
<b>SEER (1)</b>	10.0	10.0	10.0	10.0	10.0
<b>EER<sub>s</sub> (2)</b>	9.0	9.0	9.0	9.0	9.0
<b>Sound Rating(bels)</b>	8.4	8.4	8.4	8.4	8.4
<b>Indoor Blower</b>					
Type	DD	DD	DD	DD	DD
Size - D x W	10 x 8	10 x 8	10 x 8	10 x 8	10 x 8
Motor H.P.	1/2	1/2	3/4	3/4	3/4
<b>Evaporator Coil</b>					
Face Area (ft <sup>2</sup> )	5.75	5.75	6.22	6.22	6.22
Fin/In.	14	14	14	14	14
No. of Rows	4	4	4	4	4
<b>Outdoor Fan</b>					
Fan Dia. (In.)	22	22	22	22	22
Motor H.P.	1/4	1/4	1/3	1/3	1/3
<b>Condenser Coil</b>					
Face Area (ft <sup>2</sup> )	14.7	14.7	16.2	16.2	16.2
Fin/In.	19	19	19	19	19
No. of Rows	1	1	1	1	1
<b>Electrical</b>					
Ph	1	3	1	3	1
Volts	208/230	208/230	208/230	208/230	460
Compr. RLA	18.3	12.6	25.0	15.5	7.5
Compr. LRA	102.0	91.0	170.0	124.0	59.6
Indoor Blw FLA	3.6	3.6	5.1	5.1	2.2
Outdoor Blw FLA	1.6	1.6	2.5	2.5	1.2
Min. Circuit Amp.	28.2	21.0	38.9	27.0	12.8
M.O.P. (3)	40	30	60	40	20
<b>Net Weight</b>	340	340	350	350	350
<b>Shipping Weight</b>	365	365	375	375	375

(1) Certified per ARI 210

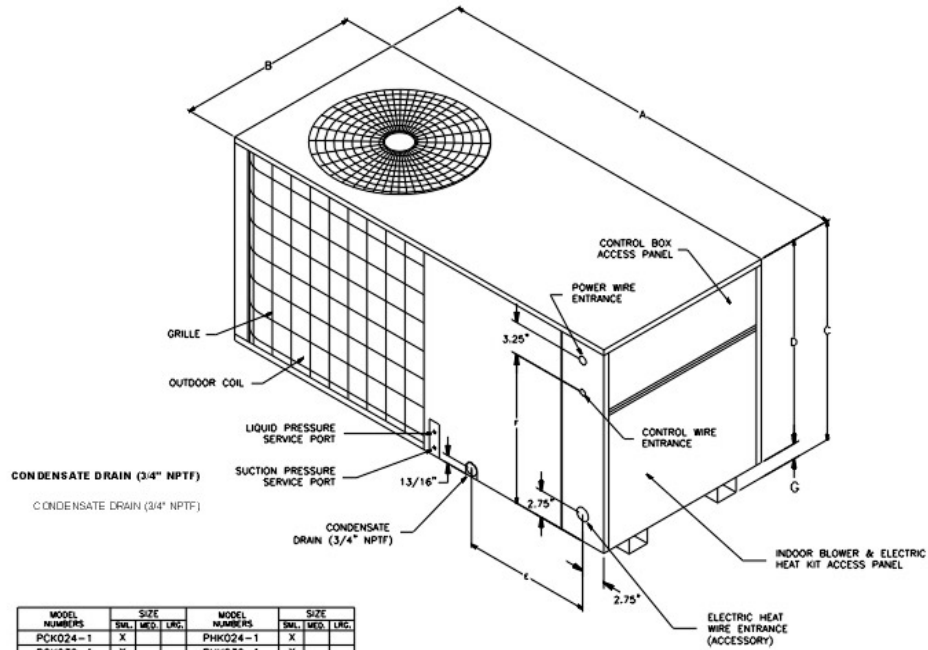
(2) BTU/Watt @ 80/67 °F inside - 95 °F outside air

(3) M.O.P. (Maximum Overcurrent Protection)

Note - May use fuses or HACR type Circuit Breakers of the same size as noted

# PRODUCT SPECIFICATIONS

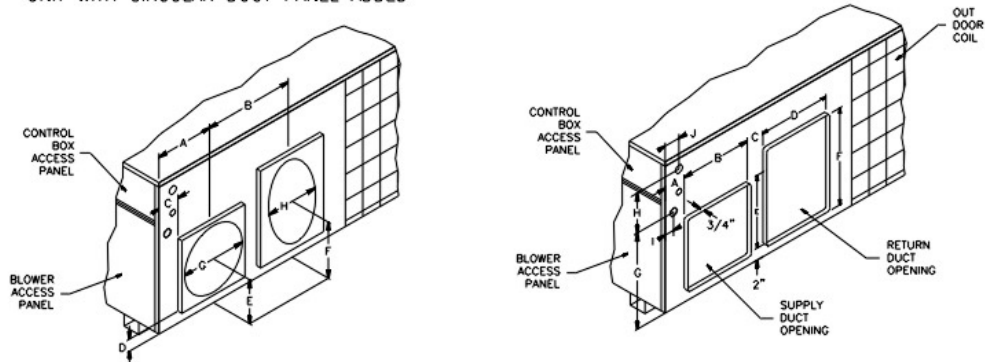
## Dimensions



MODEL NUMBERS	SIZE			MODEL NUMBERS	SIZE		
	SM.	MED.	LRG.		SM.	MED.	LRG.
PCK024-1	X			PHK024-1	X		
PCK030-1	X			PHK030-1	X		
PCK036-1	X			PHK036-1		X	
PCK036-3	X			PHK036-5			X
PCK042-1		X		PHK042-1			X
PCK048-1		X		PHK048-1			X
PCK048-3		X		PHK048-3			X
PCK048-5		X		PHK048-5			X
PCK060-1		X		PHK060-1			X
PCK060-3		X		PHK060-3			X
PCK060-4		X		PHK060-5			X
PCK060-5		X					
PCKJ024-1	X						
PCKJ030-1	X			PHKJ024-1			X
PCKJ036-1		X		PHKJ030-1			X
PCKJ042-1		X		PHKJ036-1			X
PCKJ048-1		X		PHKJ048-1			X
PCKJ060-1		X		PHKJ060-1			X

MODEL SIZE	A	B	C	D	E	F	G
LARGE	63.15	32.15	34.62	32.50	19.56	27.06	2.12
MEDIUM	63.15	32.15	29.62	27.50	19.56	22.06	2.12
SMALL	56.35	24.14	27.12	25.00	16.68	19.56	2.12

UNIT WITH CIRCULAR DUCT PANEL ADDED



MODEL SIZE	A	B	C	D	E	F	G	H*
LARGE	10.75	20.25	3.75	2.00	9.00	14.00	14.00	18.00
MEDIUM	10.75	20.25	3.75	2.00	9.00	13.00	14.00	16.00
SMALL	9.62	16.24	3.62	2.00	8.00	12.00	12.00	14.00

MODEL SIZE	A	B	C	D	E	F	G	H	I	J
LARGE	3.75	14	6.25	14	14	24	18.68	11.62	2.25	2.75
MEDIUM	3.75	14	6.25	14	14	22	18.68	6.62	2.25	2.75
SMALL	3.62	12	4.25	12	12	20	16.18	6.62	2.59	2.59

H\* RETURN OPENING IS EQUIVALENT TO ROUND DUCT STATED

# PRODUCT SPECIFICATIONS

## Evaporator Blower Specifications

		E.S.P (In. of H <sub>2</sub> O)											
MODEL	SPEED	VOLTS	0.1	0.2	0.3	0.4	0.5	0.6	0.7	0.8	0.9	1.0	
PCK024-1	LOW	230	CFM WATTS	1100 400	1080 390	1055 380	1020 370	975 355	950 330	900 305	855 285	- -	- -
		208	CFM WATTS	1060 375	1040 365	1005 335	950 330	920 320	890 305	845 285	795 260	- -	- -
	HIGH	230	CFM WATTS	1250 470	1240 465	1200 450	1150 435	1070 420	1035 400	995 370	945 345	890 320	835 290
		208	CFM WATTS	1225 440	1220 435	1175 420	1125 410	1045 395	1010 375	960 345	900 320	835 295	805 265
PCK030-1A	LOW	230	CFM WATTS	1150 320	1120 310	1075 300	1005 290	955 275	870 255	770 240	- -	- -	- -
		208	CFM WATTS	1110 355	1080 285	1055 255	945 250	900 240	8100 230	- -	- -	- -	- -
	MED	230	CFM WATTS	1275 385	1265 380	1210 360	1135 350	1070 335	985 310	855 290	- -	- -	- -
		208	CFM WATTS	1250 355	1245 340	1185 335	1110 330	1045 300	9602 285	820 265	- -	- -	- -
	HIGH	230	CFM WATTS	1345 435	1335 430	1275 415	1210 400	1135 390	1035 375	925 355	785 330	- -	- -
		208	CFM WATTS	1310 405	1315 400	1250 385	1175 375	1110 365	1010 350	890 330	740 305	- -	- -
PCK036-1A	LOW	230	CFM WATTS	1100 315	1070 305	1025 295	965 285	905 270	820 250	720 235	- -	- -	- -
		208	CFM WATTS	1060 350	1030 280	1005 250	895 245	850 235	760 225	- -	- -	- -	
	MED	230	CFM WATTS	1225 380	1215 375	1160 355	1085 345	1020 330	935 305	805 285	- -	- -	- -
		208	CFM WATTS	1200 350	1195 335	1135 330	1060 325	995 295	910 280	770 260	- -	- -	- -
	HIGH	230	CFM WATTS	1295 430	1285 425	1225 410	1150 395	1085 385	985 370	875 350	735 325	- -	- -
		208	CFM WATTS	1260 400	1265 395	1200 380	1125 370	1060 360	960 345	840 325	690 300	- -	- -
PCK042-X	LOW	230	CFM WATTS	1390 460	1375 440	1365 425	1355 420	1330 410	1280 380	- -	- -	- -	- -
		208	CFM WATTS	1320 430	1310 415	1300 400	1285 395	1260 385	- -	- -	- -	- -	- -
	HIGH	230	CFM WATTS	1725 550	1630 520	1590 510	1560 500	1520 480	1400 430	1315 410	- -	- -	- -
		208	CFM WATTS	1640 525	1550 495	1515 485	1485 475	1445 455	1330 410	1250 380	- -	- -	- -
PCK048-X	LOW	230	CFM WATTS	1760 725	1730 690	1685 670	1635 640	1580 600	1490 565	- -	- -	- -	- -
		208	CFM WATTS	1640 700	1610 665	1600 650	1580 625	1490 565	- -	- -	- -	- -	- -
	HIGH	230	CFM WATTS	2010 870	1990 840	1960 810	1880 765	1795 710	1695 670	1595 635	- -	- -	- -
		208	CFM WATTS	1910 825	1895 790	1865 770	1790 730	1710 680	1615 640	1520 605	- -	- -	- -
PCK060-X	LOW	230	CFM WATTS	2160 910	2125 865	2085 830	2025 800	1970 765	- -	- -	- -	- -	- -
		208	CFM WATTS	2055 820	2010 780	1985 755	1890 740	1870 730	- -	- -	- -	- -	- -
	HIGH	230	CFM WATTS	2540 1115	2470 1070	2310 1020	2280 985	2220 945	2095 895	- -	- -	- -	- -
		208	CFM WATTS	2425 1055	2350 1020	2200 985	2150 935	2120 905	1995 855	- -	- -	- -	- -

NOTES:

1. Data shown is dry coil. Wet coil pressure drop is approx. 0.1" H<sub>2</sub>O, for 2 row indoor coil; 0.2" H<sub>2</sub>O, for 3 row indoor coil; and 0.3" H<sub>2</sub>O, for 4 row indoor coil.
2. Data shown does not include filter pressure drop, approx. 0.08" H<sub>2</sub>O.
3. ALL MODELS SHOULD RUN NO LESS THAN 350 CFM / TON, USE HIGHER SPEED TAP OR NEXT SIZE LARGER BLOWER ASM., SEE REPAIR PARTS LIST.

# PRODUCT SPECIFICATIONS

## Expanded Ratings

### PCK024-1A

INDOOR AIR		CONDENSER AIR TEMPERATURE														
		75			85			95			105			115		
SCFM	WB	TOTAL MBTUH	SENS MBTUH	WATTS KWH	TOTAL MBTUH	SENS MBTUH	WATTS KWH	TOTAL MBTUH	SENS MBTUH	WATTS KWH	TOTAL MBTUH	SENS MBTUH	WATTS KWH	TOTAL MBTUH	SENS MBTUH	WATTS KWH
657	72	26.9	12.6	2.42	25.8	12.1	2.55	24.4	11.6	2.66	23.0	11.1	2.78	21.6	10.6	2.91
	67	24.6	15.6	2.27	23.4	15.1	2.37	22.3	14.6	2.50	20.9	14.1	2.63	19.5	14.1	2.76
	62	22.7	18.5	2.11	21.6	18.0	2.24	21.0	17.5	2.37	20.4	17.0	2.50	19.3	16.3	2.60
	57	21.8	20.0	2.06	20.9	19.2	2.19	20.0	18.3	2.32	18.8	17.3	2.47	17.9	16.3	2.58
773	72	28.1	13.9	2.50	26.7	13.4	2.60	25.3	12.9	2.73	23.9	12.6	2.86	22.3	11.9	2.99
	67	25.8	17.8	2.35	24.6	17.3	2.45	23.2	16.8	2.58	21.8	16.3	2.71	20.4	15.8	2.84
	62	23.9	21.3	2.22	22.7	20.7	2.32	21.6	19.8	2.45	20.6	18.8	2.58	19.5	17.8	2.73
	57	23.7	21.7	2.19	22.5	20.8	2.32	21.6	19.8	2.45	20.6	18.8	2.58	19.5	17.8	2.73
889	72	28.8	15.1	2.55	27.4	14.6	2.66	26.0	14.1	2.78	24.4	13.6	2.91	23.0	13.3	3.04
	67	26.7	19.7	2.40	25.3	19.3	2.50	23.9	18.8	2.63	22.5	18.1	2.76	21.1	17.6	2.89
	62	25.1	23.0	2.29	24.1	22.0	2.42	22.7	21.0	2.55	21.8	20.0	2.68	20.4	18.8	2.84
	57	25.1	23.0	2.29	24.1	22.0	2.42	22.7	21.0	2.55	21.8	20.0	2.68	20.4	18.8	2.84

Sensible heat capacities shown are based on 80 °F DB entering air at the evaporator coil. For sensible heat capacities at other than 80 °F DB, deduct 84 BTUH per 100 CFM of evaporator coil air for each degree below 80 °F, or add 84 BTUH per 100 CFM of evaporator coil air per degree above 80 °F

**CAPACITIES AT 95 °F OUTDOOR, 75 °F DB AND 63 °F WB INDOOR**

TOTAL MBTUH 21.9      SENSIBLE MBTUH 16.0      LATENT MBTUH 5.9

### PCK030-1A

INDOOR AIR		CONDENSER AIR TEMPERATURE														
		75			85			95			105			115		
SCFM	WB	TOTAL MBTUH	SENS MBTUH	WATTS KWH	TOTAL MBTUH	SENS MBTUH	WATTS KWH	TOTAL MBTUH	SENS MBTUH	WATTS KWH	TOTAL MBTUH	SENS MBTUH	WATTS KWH	TOTAL MBTUH	SENS MBTUH	WATTS KWH
805	72	32.9	15.5	2.97	31.5	14.8	3.12	29.8	14.2	3.25	28.1	13.6	3.41	26.4	13.0	3.57
	67	30.1	19.2	2.78	28.7	18.5	2.90	27.3	17.9	3.06	25.6	17.3	3.22	23.9	17.3	3.38
	62	27.8	22.7	2.59	26.4	22.0	2.75	25.7	21.4	2.90	25.0	20.8	3.06	23.6	20.0	3.19
	57	26.7	24.5	2.52	25.6	23.5	2.68	24.4	22.5	2.84	23.0	21.2	3.03	21.9	20.0	3.16
947	72	34.4	17.1	3.06	32.7	16.5	3.19	31.0	15.9	3.34	29.3	15.5	3.50	27.3	14.6	3.66
	67	31.5	21.8	2.87	30.1	21.2	3.00	28.4	20.6	3.16	26.7	20.0	3.31	25.0	19.4	3.47
	62	29.3	26.2	2.71	27.8	25.3	2.84	26.4	24.3	3.00	25.3	23.1	3.16	23.9	21.8	3.34
	57	29.0	26.6	2.68	27.5	25.5	2.84	26.4	24.3	3.00	25.3	23.1	3.16	23.9	21.8	3.34
1089	72	35.2	18.5	3.12	33.5	17.9	3.25	31.8	17.3	3.41	29.8	16.7	3.57	28.1	16.3	3.72
	67	32.7	24.1	2.93	31.0	23.7	3.06	29.3	23.1	3.22	27.5	22.2	3.38	25.8	21.6	3.53
	62	30.7	28.2	2.81	29.5	27.0	2.97	27.8	25.8	3.12	26.7	24.5	3.28	25.0	23.1	3.47
	57	30.7	28.2	2.81	29.5	27.0	2.97	27.8	25.8	3.12	26.7	24.5	3.28	25.0	23.1	3.47

Sensible heat capacities shown are based on 80 °F DB entering air at the evaporator coil. For sensible heat capacities at other than 80 °F DB, deduct 84 BTUH per 100 CFM of evaporator coil air for each degree below 80 °F, or add 84 BTUH per 100 CFM of evaporator coil air per degree above 80 °F

**CAPACITIES AT 95 °F OUTDOOR, 75 °F DB AND 63 °F WB INDOOR**

TOTAL MBTUH 26.8      SENSIBLE MBTUH 19.6      LATENT MBTUH 7.2

PRODUCT SPECIFICATIONS

Expanded Ratings (cont.)

PCK036-1A & -3A

INDOOR AIR		CONDENSER AIR TEMPERATURE														
		75			85			95			105			115		
SCFM	WB	TOTAL MBTUH	SENS MBTUH	WATTS KWH	TOTAL MBTUH	SENS MBTUH	WATTS KWH	TOTAL MBTUH	SENS MBTUH	WATTS KWH	TOTAL MBTUH	SENS MBTUH	WATTS KWH	TOTAL MBTUH	SENS MBTUH	WATTS KWH
992	72	40.6	19.2	3.66	38.9	18.4	3.85	36.8	17.7	4.01	34.7	16.9	4.20	32.6	16.1	4.39
	67	37.1	23.8	3.42	35.4	23.0	3.58	33.6	22.3	3.77	31.5	21.5	3.97	29.4	21.5	4.16
	62	34.3	28.2	3.19	32.6	27.4	3.38	31.7	26.6	3.58	30.8	25.9	3.77	29.1	24.8	3.93
	57	32.9	30.5	3.11	31.5	29.2	3.31	30.1	27.9	3.50	28.4	26.4	3.73	27.0	24.8	3.89
1167	72	42.4	21.2	3.77	40.3	20.5	3.93	38.2	19.7	4.12	36.1	19.2	4.32	33.6	18.2	4.51
	67	38.9	27.1	3.54	37.1	26.4	3.69	35.0	25.6	3.89	32.9	24.8	4.08	30.8	24.1	4.28
	62	36.1	32.5	3.34	34.3	31.5	3.50	32.6	30.2	3.69	31.2	28.7	3.89	29.4	27.1	4.12
	57	35.7	33.0	3.31	34.0	31.7	3.50	32.6	30.2	3.69	31.2	28.7	3.89	29.4	27.1	4.12
1342	72	43.4	23.0	3.85	41.3	22.3	4.01	39.2	21.5	4.20	36.8	20.7	4.39	34.7	20.2	4.59
	67	40.3	30.0	3.62	38.2	29.4	3.77	36.1	28.7	3.97	34.0	27.6	4.16	31.9	26.9	4.36
	62	37.8	35.1	3.46	36.4	33.5	3.66	34.3	32.0	3.85	32.9	30.5	4.04	30.8	28.7	4.28
	57	37.8	35.1	3.46	36.4	33.5	3.66	34.3	32.0	3.85	32.9	30.5	4.04	30.8	28.7	4.28

Sensible heat capacities shown are based on 80 °F DB entering air at the evaporator coil. For sensible heat capacities at other than 80 °F DB, deduct 84 BTUH per 100 CFM of evaporator coil air for each degree below 80 °F, or add 84 BTUH per 100 CFM of evaporator coil air per degree above 80 °F

CAPACITIES AT 95 °F OUTDOOR, 75 °F DB AND 63 °F WB INDOOR

TOTAL MBTUH 33.0      SENSIBLE MBTUH 24.4      LATENT MBTUH 8.7

PCK042-1A

INDOOR AIR		CONDENSER AIR TEMPERATURE														
		75			85			95			105			115		
SCFM	WB	TOTAL MBTUH	SENS MBTUH	WATTS KWH	TOTAL MBTUH	SENS MBTUH	WATTS KWH	TOTAL MBTUH	SENS MBTUH	WATTS KWH	TOTAL MBTUH	SENS MBTUH	WATTS KWH	TOTAL MBTUH	SENS MBTUH	WATTS KWH
1190	72	48.7	24.0	4.39	46.6	23.0	4.62	44.1	22.1	4.81	41.6	21.1	5.04	39.1	20.2	5.27
	67	44.5	29.8	4.11	42.4	28.8	4.29	40.3	27.8	4.53	37.8	26.9	4.76	35.3	26.9	4.99
	62	41.2	35.2	3.83	39.1	34.2	4.06	38.0	33.3	4.29	37.0	32.3	4.53	34.9	31.0	4.71
	57	39.5	38.1	3.73	37.8	36.5	3.97	36.1	34.9	4.20	34.0	33.0	4.48	32.3	31.0	4.67
1400	72	50.8	26.6	4.53	48.3	25.6	4.71	45.8	24.6	4.95	43.3	24.0	5.18	40.3	22.7	5.41
	67	46.6	33.9	4.25	44.5	33.0	4.43	42.0	32.0	4.67	39.5	31.0	4.90	37.0	30.1	5.13
	62	43.3	40.6	4.01	41.2	39.4	4.20	39.1	37.8	4.43	37.4	35.8	4.67	35.3	33.9	4.95
	57	42.8	41.3	3.97	40.7	39.7	4.20	39.1	37.8	4.43	37.4	35.8	4.67	35.3	33.9	4.95
1610	72	52.1	28.8	4.62	49.6	27.8	4.81	47.0	26.9	5.04	44.1	25.9	5.27	41.6	25.3	5.51
	67	48.3	37.4	4.34	45.8	36.8	4.53	43.3	35.8	4.76	40.7	34.6	4.99	38.2	33.6	5.23
	62	45.4	43.8	4.15	43.7	41.9	4.39	41.2	40.0	4.62	39.5	38.1	4.85	37.0	35.8	5.13
	57	45.4	43.8	4.15	43.7	41.9	4.39	41.2	40.0	4.62	39.5	38.1	4.85	37.0	35.8	5.13

Sensible heat capacities shown are based on 80 °F DB entering air at the evaporator coil. For sensible heat capacities at other than 80 °F DB, deduct 84 BTUH per 100 CFM of evaporator coil air for each degree below 80 °F, or add 84 BTUH per 100 CFM of evaporator coil air per degree above 80 °F

CAPACITIES AT 95 °F OUTDOOR, 75 °F DB AND 63 °F WB INDOOR

TOTAL MBTUH 39.6      SENSIBLE MBTUH 30.7      LATENT MBTUH 8.9

PRODUCT SPECIFICATIONS

Expanded Ratings (cont.)

PCK048-1A & 3A

INDOOR AIR		CONDENSER AIR TEMPERATURE														
		75			85			95			105			115		
SCFM	WB	TOTAL MBTUH	SENS MBTUH	WATTS KWH	TOTAL MBTUH	SENS MBTUH	WATTS KWH	TOTAL MBTUH	SENS MBTUH	WATTS KWH	TOTAL MBTUH	SENS MBTUH	WATTS KWH	TOTAL MBTUH	SENS MBTUH	WATTS KWH
1303	72	53.4	26.9	4.80	51.1	25.8	5.06	48.3	24.7	5.26	45.5	23.6	5.52	42.8	22.6	5.78
	67	48.8	33.3	4.50	46.5	32.2	4.70	44.2	31.1	4.96	41.4	30.1	5.21	38.6	30.1	5.47
	62	45.1	39.4	4.19	42.8	38.3	4.45	41.6	37.2	4.70	40.5	36.2	4.96	38.2	34.7	5.16
	57	43.2	42.6	4.09	41.4	40.8	4.34	39.6	39.0	4.60	37.3	36.9	4.91	35.4	34.7	5.11
1533	72	55.7	29.7	4.96	52.9	28.6	5.16	50.1	27.6	5.42	47.4	26.9	5.67	44.2	25.4	5.93
	67	51.1	37.9	4.65	48.8	36.9	4.86	46.0	35.8	5.11	43.2	34.7	5.37	40.5	33.7	5.62
	62	47.4	45.5	4.40	45.1	44.0	4.60	42.8	42.2	4.86	40.9	40.1	5.11	38.6	37.9	5.42
	57	46.9	46.2	4.34	44.6	44.4	4.60	42.8	42.2	4.86	40.9	40.1	5.11	38.6	37.9	5.42
1763	72	57.0	32.2	5.06	54.3	31.1	5.26	51.5	30.1	5.52	48.3	29.0	5.78	45.5	28.3	6.03
	67	52.9	41.9	4.75	50.1	41.2	4.96	47.4	40.1	5.21	44.6	38.7	5.47	41.9	37.6	5.72
	62	49.7	49.0	4.55	47.8	46.9	4.80	45.1	44.8	5.06	43.2	42.6	5.32	40.5	40.1	5.62
	57	49.7	49.0	4.55	47.8	46.9	4.80	45.1	44.8	5.06	43.2	42.6	5.32	40.5	40.1	5.62

Sensible heat capacities shown are based on 80 °F DB entering air at the evaporator coil. For sensible heat capacities at other than 80 °F DB, deduct 84 BTUH per 100 CFM of evaporator coil air for each degree below 80 °F, or add 84 BTUH per 100 CFM of evaporator coil air per degree above 80 °F

CAPACITIES AT 95 °F OUTDOOR, 75 °F DB AND 63 °F WB INDOOR

TOTAL MBTUH 43.4      SENSIBLE MBTUH 34.5      LATENT MBTUH 8.9

PCK060-1, 3 & 4

INDOOR AIR		CONDENSER AIR TEMPERATURE														
		75			85			95			105			115		
SCFM	WB	TOTAL MBTUH	SENS MBTUH	WATTS KWH	TOTAL MBTUH	SENS MBTUH	WATTS KWH	TOTAL MBTUH	SENS MBTUH	WATTS KWH	TOTAL MBTUH	SENS MBTUH	WATTS KWH	TOTAL MBTUH	SENS MBTUH	WATTS KWH
1643	72	67.3	32.6	6.06	64.4	31.3	6.38	60.9	30.0	6.64	57.4	28.7	6.96	53.9	27.4	7.28
	67	61.5	40.5	5.67	58.6	39.2	5.93	55.7	37.8	6.25	52.2	36.5	6.57	48.7	36.5	6.90
	62	56.8	47.9	5.28	53.9	46.5	5.61	52.5	45.2	5.93	51.0	43.9	6.25	48.1	42.2	6.51
	57	54.5	51.8	5.16	52.2	49.6	5.48	49.9	47.4	5.80	47.0	44.8	6.19	44.7	42.2	6.44
1933	72	70.2	36.1	6.25	66.7	34.8	6.51	63.2	33.5	6.83	59.7	32.6	7.15	55.7	30.9	7.48
	67	64.4	46.1	5.86	61.5	44.8	6.12	58.0	43.5	6.44	54.5	42.2	6.77	51.0	40.9	7.09
	62	59.7	55.2	5.54	56.8	53.5	5.80	53.9	51.3	6.12	51.6	48.7	6.44	48.7	46.1	6.83
	57	59.2	56.1	5.48	56.3	53.9	5.80	53.9	51.3	6.12	51.6	48.7	6.44	48.7	46.1	6.83
2223	72	71.9	39.2	6.38	68.4	37.8	6.64	65.0	36.5	6.96	60.9	35.2	7.28	57.4	34.4	7.60
	67	66.7	50.9	5.99	63.2	50.0	6.25	59.7	48.7	6.57	56.3	47.0	6.90	52.8	45.7	7.22
	62	62.6	59.6	5.74	60.3	57.0	6.06	56.8	54.4	6.38	54.5	51.8	6.70	51.0	48.7	7.09
	57	62.6	59.6	5.74	60.3	57.0	6.06	56.8	54.4	6.38	54.5	51.8	6.70	51.0	48.7	7.09

Sensible heat capacities shown are based on 80 °F DB entering air at the evaporator coil. For sensible heat capacities at other than 80 °F DB, deduct 84 BTUH per 100 CFM of evaporator coil air for each degree below 80 °F, or add 84 BTUH per 100 CFM of evaporator coil air per degree above 80 °F

CAPACITIES AT 95 °F OUTDOOR, 75 °F DB AND 63 °F WB INDOOR

TOTAL MBTUH 54.8      SENSIBLE MBTUH 41.6      LATENT MBTUH 13.1



## PRODUCT SPECIFICATIONS

### Heat Kit Model Identification

**HK 05 - 1**

Electrical Designator

1 - 208 / 240 VAC, 1 PH, 50/60 HZ

3 - 208 / 240 VAC, 3 PH, 50/60 HZ

Nominal Capacity

05 - 4.75 KW

10 - 9.5 KW

15 - 14.25 KW

20 - 19.0 KW

Unit Type

HK - Optional Heat Kit

### Heat Kit Selection

MODEL	PCK024-1	PCK030-1	PCK036-1	PCK036-3	PCK042-1	PCK042-3	PCK048-1	PCK048-3	PCK060-1	PCK060-3	PCK060-4
HK50-1	*	*	*	*	*	*	*	*	*	*	*
HK08-1	*	*	*	*	*	*	*	*	*	*	*
HK10-X	*	*	*	*	*	*	*	*	*	*	*
HK15-X			*	*	*	*	*	*	*	*	*
HK20-X				*	*	*	*	*	*	*	*

NOTE: X = 1, 3 OR 4 Electrical Designator.

### Heat Kit Electrical Data

Model No.	Nominal K. W.	Heater Amperage	Minimum Ampacity	Maximum Overcurrent Protection	Multiple Supply Circuit			
					Min. Ampacity per Circuit		Max. Overcurrent Protection	
					208/240V			
					1	2	1	2
HK05-1*	4.75	17.2/19.8	22/25	30/30				
HK08-1*	7.00	25.3/29.2	32/37	60/60				
HK10-1*	9.50	34.4/39.6	43/50	60/60				
HK10-3	9.50	20.7/23.6	26/30	30/30				
HK15-1*	14.25	51.5/59.4	65/75	90/90	22/25	43/50	30/30	60/60
HK15-3	15.0	31.7/36.2	40/46	50/50				
HK15-4#	15.0	18.1	23	30				
HK20-1*	19.0	68.7/79.2	86/99	120/120	43/50	43/50	60/60	60/60
HK20-3	19.6	41.4/47.2	52/59	60/60				
HK20-4#	19.6	23.6	30	30				

\* - Circuit Breaker Models

Ratings at 208/240 VAC, except where noted

# - Ratings at 480 VAC, PH 3

## PRODUCT SPECIFICATIONS

---

### Accessories

	SMALL	MEDIUM	LARGE
Roof Curb	PCCP-1	PCCP2-3	PCCP2-3
Down Flow Plenum	PCP-1	PCP2-3	PCP2-3
Manual Fresh Air Damper	PCMD-1	PCMD2-3	PCMD2-3
Economizer - Down Flow	PCE-1	PCE2-3	PCE2-3
Square To Round Converter (Downflow)	SQRPC-1	SQRPC2-3	SQRPC2-3
Square To Round Converter (Horizontal)	SQRPCH-1	SQRPCH-2	SQRPCH-3
Elbow & Flashing	PCEF-1	PCEF2-3	PCEF2-3
Room Thermostat	CHT18-60	CHT18-60	CHT18-60

NOTE - Down Flow Plenum includes Filter Rack

### Chassis Sizes

SMALL	MEDIUM	LARGE
PC024	PCK042	PCK060
PC030	PCK048	
PC036		

### KW Correction Factor

Supply Voltage	240	230	220	210	208
Correction Factor	1.00	0.93	0.85	0.78	0.76

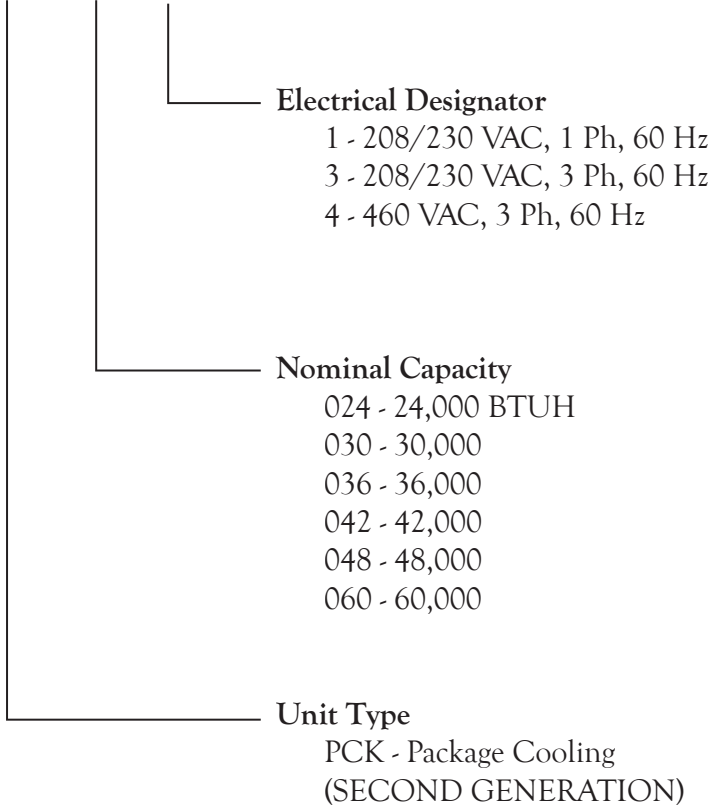
(Multiply the 240 VAC capacity by factors)

# PRODUCT SPECIFICATIONS

---

## Model Identification

**PCK 024 -1**



ALL UNITS ARE DIRECT DRIVE



Goodman Manufacturing Company, L.P., reserves the right to discontinue, or change at any time, specifications or designs without notice or without incurring obligations.  
Copyright © 2003 Goodman Manufacturing Company, L.P. • Houston, Texas • Printed in the USA. • Goodman products are made proudly in the USA.