

\$10.00

The Mobile Home Revolution Continues!

Leading the charge in Mobile Home HVAC!

800.945.4440

www.stylecrestinc.com

PRODUCT CATALOG

INDOOR COMFORT PRODUCTS
Revolv[®]
STYLECREST



R
The Mobile Home Expert!



Heating & Air Conditioning

HVAC SYSTEMS DIAGRAMS E-1 HVAC DEFINITIONS AND TERMINOLOGY E-2

A/C PADS E-44

AIR CONDITIONERS

Packaged Air Conditioners E-21, 22
Split System 13 S.E.E.R. AccuCharge®A E-3,4
Split System 14 S.E.E.R. AccuCharge®A E-5,6
Split System 13 S.E.E.R. Sweat Fit E-11,12
Split System 14 S.E.E.R. Sweat Fit E-13, 14

BLOWER

Blower EB Series E-19, 30, 32, 34

COIL

R22 Sweat Fit E-16
R410A Sweat Fit E-15

COIL CABINET E-19, 30, 31, 35, 36, 38, 40, 41

COIL SHELF KIT

for Downflow EBxxB E-18
EXTERNAL ROOF JACK EXTENSION E-28

FILTER

Fiberglass Filter E-45, 46
FILTER FOR BLEND AIR SYSTEM E-45
Foam Filter E-46
Metal Filter E-45, 46
Tech Fab Blue Filter Washable E-45, 46
Trimmable E-45

FITRIGHT® TO SWEAT FIT STUB KITS E-8

FLEX DUCT E-19,20

FLOOR REGISTERS

Metal E-44
Plastic E-44

FURNACE

RE9 Electric E-27,28
RG1 Gas E-29,30
RG7 GAS E-31, 32
RO1 OIL E-33, 34
VMA Series Gas E-39, 40
VMC Series Gas E-37, 38

RE9, RG1, AND RO1 FURNACE ACCESSORIES E-35

RG7 FURNACE ACCESSORIES E-36

HEAT PUMP

13 S.E.E.R. R410A Packaged Heat Pumps E-23, 24
Split System 13 S.E.E.R. AccuCharge® E-7, 8
Split System 14 S.E.E.R. Sweat Fit E-1,9,10
Insulation and coil shelf package E-18

LIQUID-TIGHT CONDUIT E-43

LIQUID-TIGHT CONDUIT KIT E-37

REFRIGERANT LINE SETS E-7

ROOF JACKS E-27

THERMOSTAT E-17, 47, 48, 49



The Mobile Home Expert!

Heating and cooling products engineered specifically for mobile home installation and optimum performance.

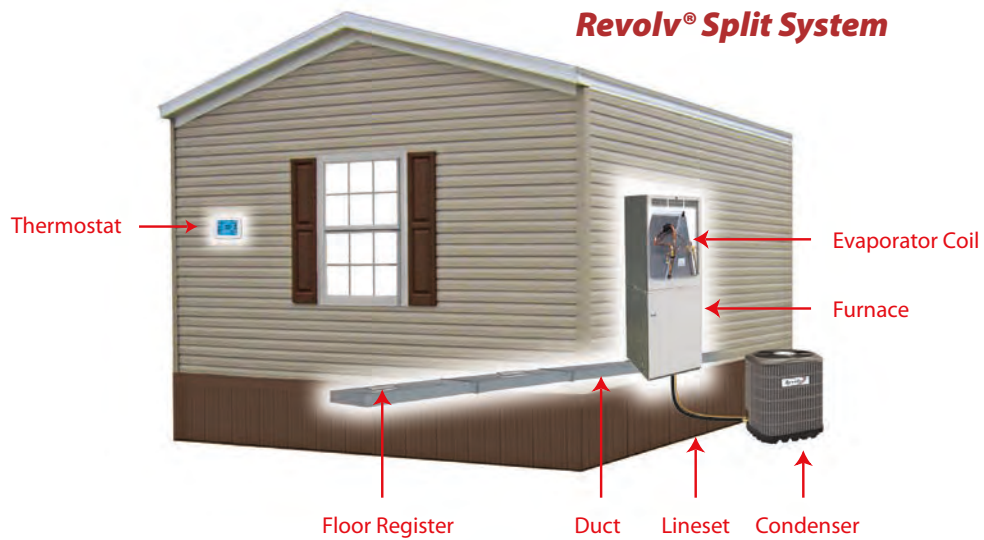
Best Warranty Program in the Industry!



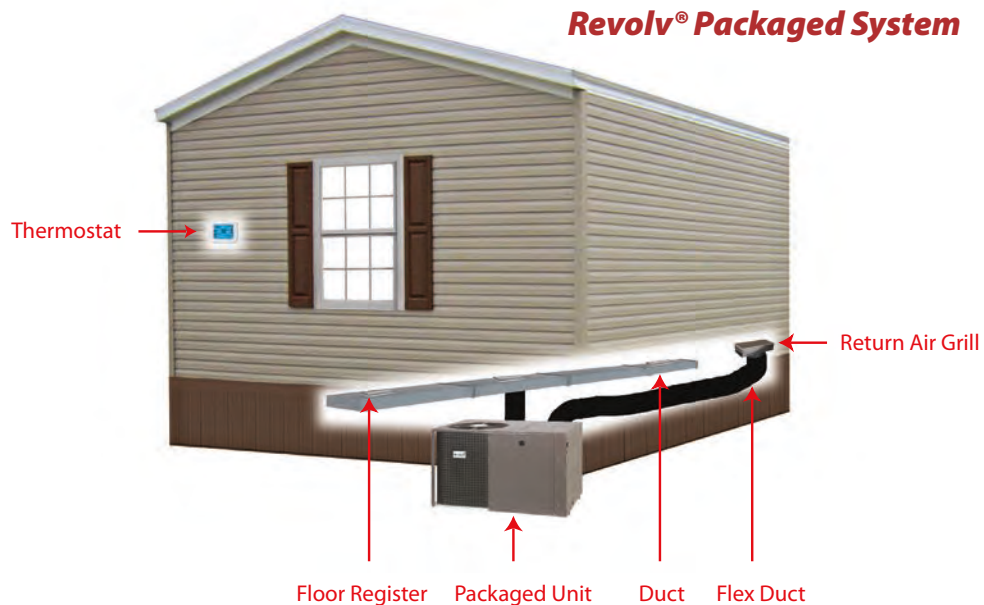


The Mobile Home Revolution Continues!

HEATING & AIR CONDITIONING



Revolv® Split System – This describes an air conditioning or heat pump system that is split into two sections - an outdoor section and an indoor section. A typical split system is an air conditioning condensing unit on a pad on the outside of the home with a furnace and or handler inside the home.



Revolv® Packaged System – Packaged units provide both heating and cooling from one unit that is placed outside the home. Packaged units are available in several combinations of fuel sources - gas heat/electric cooling; heat pump; electric heat/electric cooling; oil heat/electric cooling.

HEATING & AIR CONDITIONING

HVAC TERMINOLOGY AND DEFINITIONS

AFUE - An acronym which stands for Annual Fuel Utilization Efficiency wherein the higher the number, the more efficient the unit is rated. The Department of Energy's (DOE) minimum efficiency level is 78%.

Air Handler - This is the indoor section of a split system, also known as a fan coil, which serves to move air through your duct work via a blower motor.

Ambient Temperature - This is the air temperature surrounding the particular piece of equipment.

BTU - An acronym which stands for British Thermal Unit (Btu). This is the amount of heat required to raise the temperature of one pound of water by one degree Fahrenheit. These ratings are available on all hvac units. The heating Btu rating and air conditioner Btu rating typically are not the same for a single system.

Condensing Unit - This is the outdoor section of a split system air conditioning system which cools refrigerant that circulates in the HVAC system. This unit requires periodic cleaning to operate efficiently.

EER - is an abbreviation for Energy Efficiency Rating. The Air-Conditioning and Refrigeration Institute standardized this rating, which reports central air conditioning efficiency at 80 degrees F indoors and 95 degrees F outdoors. This rating measures steady-state efficiency — that is, the efficiency of the air conditioner once it is up and running.

Energy Star — HVAC products with the ENERGY STAR symbol are deemed to be environmentally friendly by meeting strict energy efficiency guidelines set by the EPA and the DOE.

Evaporator Coil — This element transfers heat to provide cooled, dehumidified air into your home or business. This element needs periodic cleaning to work efficiently.

Heat Pump — Provides heating and cooling comfort as a split system or as a packaged system. A heat pump can be combined with a gas furnace for better performance when temperatures fall below freezing.

HSPF - An acronym which stands for Heating Season Performance Factor and indicates the comparative level of a heat pumps' heating efficiency. A higher HSPF number indicates greater efficiency.

Latent Heat - is the energy absorbed by or released from a substance during a phase change from a gas to a liquid or a solid or vice versa. If a substance is changing from a solid to a liquid, for example, the substance needs to absorb energy from the surrounding environment in order to spread out the molecules into a larger, more fluid volume. If the substance is changing from something with lower density, like a gas, to a phase with higher density like a liquid, the substance gives off energy as the molecules come closer together and lose energy from motion and vibration.

Packaged System - Packaged units provide both heating and cooling from one unit that is placed outside the home or business. Packaged units are available in several combinations of fuel sources - gas heat/electric cooling; heat pump; electric heat/electric cooling; oil heat/electric cooling.

Sensible Heat - is the energy required to change the temperature of a substance with no phase change. This is what the thermostat and thermometer registers.

SEER Rating - A measurement of the efficiency of cooling products which stands for Seasonal Energy Efficiency Rating. Higher SEER ratings indicate higher energy efficiency. SEER rating is generally more important than the size of your air conditioning unit.

Split System - This describes an air conditioning or heat pump system that is split into two sections - an outdoor section and an indoor section. A typical split system is an air conditioning condensing unit on a concrete pad on the outside of the home with a furnace and air handler inside the home.

Thermo Coupler - a heat sensitive device used in a gas furnace which triggers the ignition of burners based.

Thermostat - is a control device located inside your home or office used to set, maintain and control temperature levels. A thermostat will automatically turn on an HVAC system to maintain a preset temperature level and should not be used as a switch. Thermostats must be matched to the type of system used and wired accordingly.

Ton - A measurement of the capacity of an air conditioning system (not weight). One ton of air conditioning equals 12,000 Btu's per hour. This means that a "one ton" air conditioning system has the capability of removing 12,000 Btu's of heat per hour from your home or business.



Split System AccuCharge® 13 SEER Air Conditioners

Features and Benefits

Composite Base Pan – Absorbs sound and is corrosion resistant. Composite is also stronger and lighter than steel.

Micro-Channel Coils – All aluminum coils in all models which provides high corrosion resistance.

High Pressure Switch – Protects against abnormally high system pressures. Auto-reset feature prevents nuisance service visits.

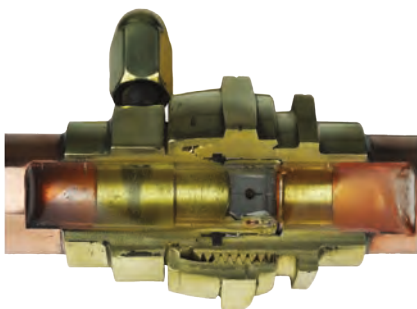
Louvered Condenser Guard – Durable metal guard protects the coil from yard hazards and extreme weather.

Designed Using Galvanized Steel – With a polyester urethane coat finish. The 950 hour salt spray finish resists corrosion 50% better than comparable units.

AccuCharge® with FitRight® fittings – Correctly charged for fast easy installations.

Warranty 5 Years Parts / 1 Year Labor *

* To receive 10-year Parts Limited Warranty, online registration of unit must be completed within 60 days of installation. Visit www.stylecrestinc.com for warranty registration



CUTAWAY VIEW OF FitRight® FITTING



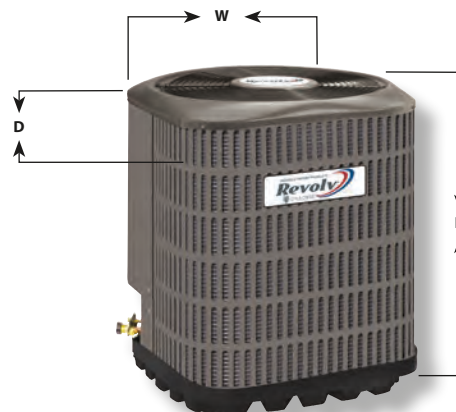
Revolv® Split System AccuCharge® A/C13 SEER

REVOLV® SPLIT SYSTEM AccuCharge® AIR CONDITIONERS 13 SEER					
Tons Nominal	Outdoor Unit SKU	Coil SCI SKU	Vapor Line	Liquid Line	Pad Size
2.0	RSC1324	1836M4A	3/4"	3/8"	24" x 24"
2.5	RSC1330	1836M4A	7/8" *	3/8"	24" x 24"
3.0	RSC1336	1854M4A	7/8" *	3/8"	24" x 24"
3.5	RSC1342	1854M4A	7/8"	3/8"	32" x 32"
4.0	RSC1348	1856M4A	7/8"	3/8"	32" x 32"

* 3/4" up to 24' length

REVOLV® SPLIT SYSTEM AccuCharge® AIR CONDITIONERS	
RSC1324	CONDENSER-QC-AC-13S-2.0T
RSC1330	CONDENSER-QC-AC-13S-2.5T
RSC1336	CONDENSER-QC-AC-13S-3.0T
RSC1342	CONDENSER-QC-AC-13S-3.5T
RSC1348	CONDENSER-QC-AC-13S-4.0T

REVOLV® SPLIT SYSTEM AccuCharge® 13 SEER AIR CONDITIONER DIMENSIONS			
Unit SKU	(D) Depth	(W) Width	(H) Height
RSC1324	22 3/4"	22 3/4"	25"
RSC1330	22 3/4"	23 3/4"	29"
RSC1336	22 3/4"	23 3/4"	29"
RSC1342	30 3/4"	30 3/4"	29"
RSC1348	30 3/4"	30 3/4"	29"



Features:

- Mounted TXV sensor bulb
- AccuCharge® Fit-Right® fittings
- Factory installed TXV valve suitable for A/C or H/P applications
- Coil has built-in strainer for coil protection
- UL® listed and leak tested to 500 p.s.i. Code approved 2-opening drain pan
- Dry-type pan does not maintain standing water
- Kit contains drain hose, fittings, and furnace cover plates for gas/oil furnaces





Split System AccuCharge® 14 SEER Air Conditioners

Features and Benefits

Composite Base Pan – Absorbs sound and is corrosion resistant. Composite is also stronger and lighter than steel.

Micro-Channel Coils – All aluminum coils in all models which provides high corrosion resistance.

High Pressure Switch – Protects against abnormally high system pressures. Auto-reset feature prevents nuisance service visits

Louvered Condenser Guard – Durable metal guard protects the coil from yard hazards and extreme weather.

Designed Using Galvanized Steel – With a polyester urethane coat finish. The 950 hour salt spray finish resists corrosion 50% better than comparable units.

AccuCharge® with FitRight® fittings – Correctly charged for fast easy installations.

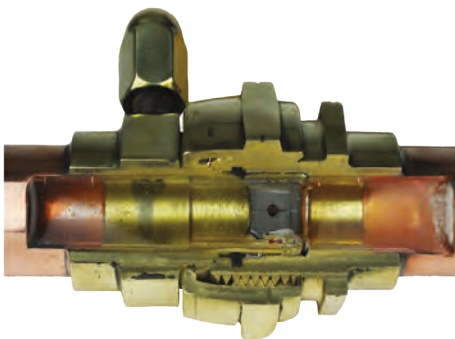
Warranty

5 Years Parts / 1 Year Labor *

* To receive 10-year Parts

Limited Warranty, online registration of unit must be completed within 60 days of installation.

Visit www.stylecrestinc.com for warranty registration



CUTAWAY VIEW OF FitRight® FITTING



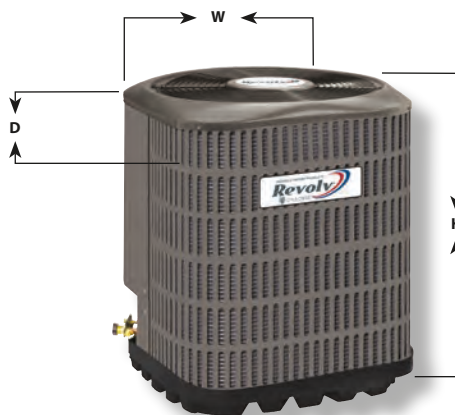
Revolv® Split System AccuCharge® A/C 14 SEER

REVOLV® SPLIT SYSTEM AccuCharge® AIR CONDITIONERS 14 SEER					
Tons Nominal	Outdoor Unit SKU	Coil SCI SKU	Vapor Line	Liquid Line	Pad Size
2	RSC1424	C8QAMX24U-B	3/4"	3/8"	24" x 24"
2.5	RSC1430	C8QAMX30U-B	3/4"	3/8"	32" x 32"
3	RSC1436	C8QAMX36U-B	7/8" *	3/8"	32" x 32"
3.5	RSC1442	C8QAMX42U-B	7/8"	3/8"	32" x 32"
4	RSC1448	C8QAMX48U-B	7/8"	3/8"	32" x 32"

* 3/4" up to 24' length

REVOLV® SPLIT SYSTEM AccuCharge® AIR CONDITIONERS	
RSC1424	CONDENSER-QC-AC-14S-2.0T
RSC1430	CONDENSER-QC-AC-14S-2.5T
RSC1436	CONDENSER-QC-AC-14S-3.0T
RSC1442	CONDENSER-QC-AC-14S-3.5T
RSC1448	CONDENSER-QC-AC-14S-4.0T

REVOLV® SPLIT SYSTEM AccuCharge® AIR CONDITIONER DIMENSIONS			
Unit SKU	(D) Depth	(W) Width	(H) Height
RSC1424	22 3/4"	22 3/4"	33"
RSC1430	30 3/4"	30 3/4"	29"
RSC1436	30 3/4"	30 3/4"	37"
RSC1442	30 3/4"	30 3/4"	45"
RSC1448	30 3/4"	30 3/4"	45"





Split System AccuCharge[®] 14 SEER Heat Pumps

Features and Benefits

Composite Base Pan – Absorbs sound and is corrosion resistant. Composite is also stronger and lighter than steel.

Micro-Channel Coils – All aluminum coils in all models which provides high corrosion resistance.

High Pressure Switch – Protects against abnormally high system pressures. Auto-reset feature prevents nuisance service visits.

Louvered Condenser Guard – Durable metal guard protects the coil from yard hazards and extreme weather.

Designed Using Galvanized Steel – With a polyester urethane coat finish. The 950 hour salt spray finish resists corrosion 50% better than comparable units.

AccuCharge[®] with FitRight[®] fittings – Correctly charged for fast easy installations



CUTAWAY VIEW OF FitRight[®] FITTING

Warranty

5 Years Parts / 1 Year Labor *

* To receive 10-year Parts

Limited Warranty, online registration of unit must be completed within 60 days of installation.

Visit www.stylecrestinc.com for warranty registration

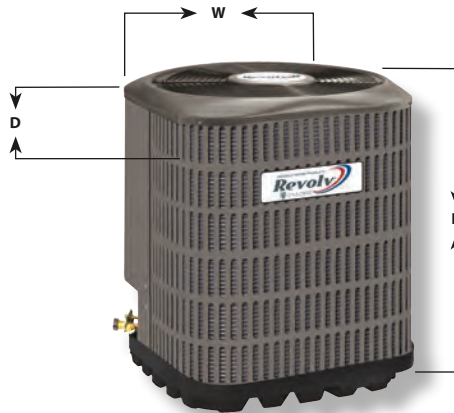


Revolv® Split System AccuCharge® H/P 14 SEER

REVOLV® SPLIT SYSTEM QC HEAT PUMPS 14 SEER					
Tons Nominal	Outdoor Unit SKU	Coil SCI SKU	Vapor Line	Liquid Line	Pad Size
2	RSH1424	C8QAMX24U-B	3/4"	3/8"	32" x 32"
2.5	RSH1430	C8QAMX30U-B	3/4"	3/8"	32" x 32"
3	RSH1436	C8QAMX36U-B	7/8"	3/8"	32" x 32"
3.5	RSH1442	C8QAMX42U-B	7/8"	3/8"	32" x 32"
4	RSH1448	C8QAMX49U-B	7/8"	3/8"	32" x 32"

REVOLV® SPLIT SYSTEM HEAT PUMPS	
RSH1424	CONDENSER-QC-HP-14S-2.0T
RSH1430	CONDENSER-QC-HP-14S-2.5T
RSH1436	CONDENSER-QC-HP-14S-3.0T
RSH1442	CONDENSER-QC-HP-14S-3.5T
RSH1448	CONDENSER-QC-HP-14S-4.0T

REVOLV® SPLIT SYSTEM HEAT PUMP DIMENSIONS			
Unit SKU	(D) Depth	(W) Width	(H) Height
RSH1424	30 3/4"	30 3/4"	33"
RSH1430	30 3/4"	30 3/4"	42"
RSH1436	30 3/4"	30 3/4"	45"
RSH1442	30 3/4"	30 3/4"	45"
RSH1448	30 3/4"	30 3/4"	45"



Product Availability, Prices and Specifications Subject to Change without Notice

MANUFACTURED HOUSING LINESETS

LINESET NOMENCLATURE	
4	4 6 3 Q 1 5 3 1
2=R22, 4=R410A, 6=Nitrogen or Open End	
Product type-4=complete Line Set. 5=Component of Line Set	
Suction line diameter-3=3/8", 2=1/4", 5=5/8", 6=3/4", 7=7/8"	
Liquid Line Diameter-1=1/8", 2=1/4", 3=3/8", 4=1/2", etc.	
Connection type-Q=QC both ends. E=QC Evap End, S=Plain End both indoor and outdoor	
Lineset length 15=15' L/S, 20=20' L/S, 25=25' L/S, 30=30' L/S, 40=40' L/S, 50=50' L/S, etc.	
Wall Insulation thickness-3=3/8" wall, 4=1/2" wall, 5=5/8" wall, 6=3/4" wall, etc.	
Sell Package quantity-1=individually boxed	

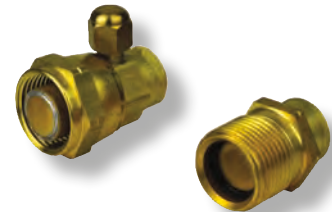
PRE-CHARGED AccuCharge® REFRIGERANT LINE SETS						
PART NUMBER	DESCRIPTION	LENGTH	LIQUID LINE DIAMETER	SUCTION LINE DIAMETER	WALL INSULATION THICKNESS	
4463Q1531	LINESET-QC R410A 15'-3/8 x 3/4-3	15'	3/8"	3/4"	3/8"	
4463Q2031	LINESET-QC R410A 20'-3/8 x 3/4-3	20'	3/8"	3/4"	3/8"	
4463Q2531	LINESET-QC R410A 25'-3/8 x 3/4-3	25'	3/8"	3/4"	3/8"	
4463Q3031	LINESET-QC R410A 30'-3/8 x 3/4-3	30'	3/8"	3/4"	3/8"	
4463Q4031	LINESET-QC R410A 40'-3/8 x 3/4-3	40'	3/8"	3/4"	3/8"	
4463Q5031	LINESET-QC R410A 50'-3/8 x 3/4-3	50'	3/8"	3/4"	3/8"	
4473Q1531	LINESET-QC R410A 15'-3/8 x 7/8-3	15'	3/8"	7/8"	3/8"	
4473Q2031	LINESET-QC R410A 20'-3/8 x 7/8-3	20'	3/8"	7/8"	3/8"	
4473Q2531	LINESET-QC R410A 25'-3/8 x 7/8-3	25'	3/8"	7/8"	3/8"	
4473Q3031	LINESET-QC R410A 30'-3/8 x 7/8-3	30'	3/8"	7/8"	3/8"	
4473Q4031	LINESET-QC R410A 40'-3/8 x 7/8-3	40'	3/8"	7/8"	3/8"	
4473Q5031	LINESET-QC R410A 50'-3/8 x 7/8-3	50'	3/8"	7/8"	3/8"	



LINESET WITH FITRIGHT® FITTINGS



OIL PACKET



FITRIGHT® FITTINGS

Product Availability, Prices and Specifications Subject to Change without Notice

FitRight® TO SWEAT FIT STUB KITS & LINE SETS

PART NUMBER	DESCRIPTION	LIQUID LINE DIAMETER	SUCTION LINE DIAMETER
4563Q1101	STUB KIT-INDOOR - 3/8" x 3/4"	3/8"	3/4"
4563Q1201	STUB KIT-COMBO - 3/8" x 3/4"	3/8"	3/4"
4563Q2201	STUB KIT OUTDOOR - 3/8" x 3/4"	3/8"	3/4"
4573Q1101	STUB KIT-INDOOR - 3/8" x 7/8"	3/8"	7/8"
4573Q1201	STUB KIT-COMBO - 3/8" x 7/8"	3/8"	7/8"
4573Q2201	STUB KIT-OUTDOOR - 3/8" x 7/8"	3/8"	7/8"



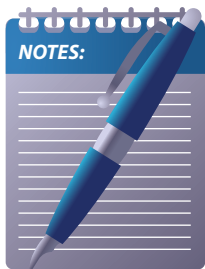
STUB KIT - OUTDOOR



STUB KIT - INDOOR



STUB KIT - COMBO





Split System Sweat Fit 13 SEER Air Conditioners

Features and Benefits

Composite Base Pan – Absorbs sound and is corrosion resistant. Composite is also stronger and lighter than steel.

Micro-Channel Coils – All aluminum coils in all models which provides high corrosion resistance.

High Pressure Switch – Protects against abnormally high system pressures. Auto-reset feature prevents nuisance service visits.

Louvered Condenser Guard – Durable metal guard protects the coil from yard hazards and extreme weather.

Designed Using Galvanized Steel – With a polyester urethane coat finish. The 950 hour salt spray finish resists corrosion 50% better than comparable units.

Warranty

5 Years Parts / 30 Days Labor *

* To receive 10-year Parts

Limited Warranty, online registration of unit must be completed within 60 days of installation.

Visit www.stylecrestinc.com for warranty registration



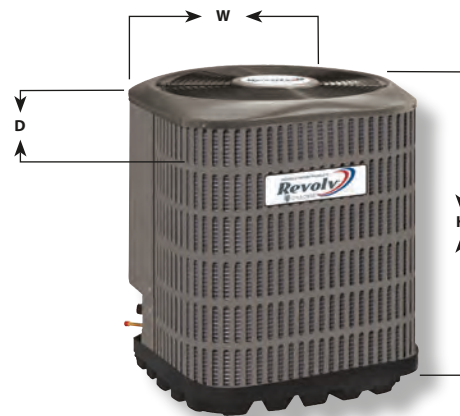
Revolv® Split System Sweat Fit A/C 13 SEER

REVOLV® SPLIT SYSTEM SWEAT FIT AIR CONDITIONERS 13 SEER					
Tons Nominal	Outdoor Unit SKU	Coil SCI SKU	Vapor Line	Liquid Line	Pad Size
2.0	RS4BD-024K	1836S4A	3/4"	3/8"	24" x 24"
2.5	RS4BD-030K	1836S4A	3/4"	3/8"	24" x 24"
3.0	RS4BD-036K	1854S4A	7/8" *	3/8"	24" x 24"
3.5	RS4BD-042KB	1854S4A	7/8"	3/8"	32" x 32"
4.0	RS4BD-048KB	1854S4A	7/8"	3/8"	32" x 32"

* 3/4" up to 24' length

REVOLV® SPLIT SYSTEM SWEAT FIT AIR CONDITIONERS	
RS4BD-024K	CONDENSER - SF - AC -13S-2.0T
RS4BD-030K	CONDENSER - SF - AC -13S-2.5T
RS4BD-036K	CONDENSER - SF - AC -13S-3.0T
RS4BD-042KB	CONDENSER - SF - AC -13-3.5T
RS4BD-048KB	CONDENSER - SF - AC -13S-4.0T

REVOLV® SPLIT SYSTEM SWEAT FIT 13 SEER AIR CONDITIONER DIMENSIONS			
Unit SKU	(D) Depth	(W) Width	(H) Height
RS4BD-024K	22 3/4"	22 3/4"	25"
RS4BD-030K	22 3/4"	23 3/4"	29"
RS4BD-036K	22 3/4"	23 3/4"	29"
RS4BD-042KB	30 3/4"	30 3/4"	29"
RS4BD-048KB	30 3/4"	30 3/4"	29"



Features and Benefits

Factory installed – TXV valve suitable for A/C or H/P applications.

Coil – Built-in strainer for coil protection.

UL® listed – Leak tested to 500 p.s.i. Code approved 2-opening drain pan.

Dry-type pan – Does not maintain standing water.

Kit – Contains drain hose, fittings, and furnace cover plates for gas/oil furnaces.

Furnace Compatibility:

All standard mobile home furnaces *

Confirm furnace coil cavity dimensions. Refer to coil dimension table on page E-15*





Split System Sweat Fit 14 SEER Air Conditioners

Features and Benefits

Composite Base Pan – Absorbs sound and is corrosion resistant. Composite is also stronger and lighter than steel.

Micro-Channel Coils – All aluminum coils in all models which provides high corrosion resistance.

High Pressure Switch – Protects against abnormally high system pressures. Auto-reset feature prevents nuisance service visits.

Louvered Condenser Guard – Durable metal guard protects the coil from yard hazards and extreme weather.

Designed Using Galvanized Steel – With a polyester urethane coat finish. The 950 hour salt spray finish resists corrosion 50% better than comparable units.

Warranty

5 Years Parts / 30 Days Labor *

* To receive 10-year Parts

Limited Warranty, online registration of unit must be completed within 60 days of installation.

Visit www.stylecrestinc.com for warranty registration



Revolv® Split System Sweat Fit A/C 14 SEER

REVOLV® SPLIT SYSTEM SWEAT FIT AIR CONDITIONERS 14 SEER					
Tons Nominal	Outdoor Unit SKU	Coil SCI SKU	Vapor Line	Liquid Line	Pad Size
2	RS4BE-024K	C8DAMX24U-B	3/4"	3/8"	24" x 24"
2.5	RS4BE-030K	C8DAMX30U-B	3/4"	3/8"	32" x 32"
3	RS4BE-036K	C8DAMX36U-B	7/8" *	3/8"	32" x 32"
3.5	RS6BF-042KB	C8DAMX42U-B	7/8"	3/8"	32" x 32"
4	RS6BF-048KB	C8DAMX48U-B	7/8"	3/8"	32" x 32"

* 3/4" up to 24' length

REVOLV® SPLIT SYSTEM SWEAT FIT AIR CONDITIONERS	
RS4BD-024KA	CONDENSER - SF - AC - 14S-2.0T
RS4BD-030KA	CONDENSER - SF - AC - 14S-2.5T
RS4BD-036KA	CONDENSER - SF - AC - 14S-3.0T
RS4BD-042K	CONDENSER - SF - AC - 14S-3.5T
RS4BD-048K	CONDENSER - SF - AC - 14S-4.0T

REVOLV® SPLIT SYSTEM SWEAT FIT AIR CONDITIONER DIMENSIONS			
Unit SKU	(D) Depth	(W) Width	(H) Height
RS4BE-024K	22 3/4"	22 3/4"	33"
RS4BE-030K	30 3/4"	23 3/4"	29"
RS4BE-036K	30 3/4"	23 3/4"	37"
RS6BF-042KB	30 3/4"	30 3/4"	45"
RS6BF-048KB	30 3/4"	30 3/4"	45"



Product Availability, Prices and Specifications Subject to Change without Notice



R410A Sweat Fit Manufactured Housing Coils

The **Revolv® R410A Coil** series is designed to be "THE" A-COIL choice to be installed on new and existing down flow MH furnaces. Special drain pans available for up flow gas/oil applications.

Features and Benefits

Factory installed – TXV valve suitable for A/C or H/P applications.

Coil – Built-in strainer for coil protection.

UL® listed – Leak tested to 500 p.s.i. Code approved 2–opening drain pan.

Dry-type pan – Does not maintain standing water.

Kit – Contains drain hose, fittings, and furnace cover plates for gas/oil furnaces.

Furnace Compatibility:

All standard mobile home furnaces *

Confirm furnace coil cavity dimensions. Refer to coil dimension table *

Revolv® Coils work with many national brands in 13 and higher SEER A/C and H/P applications (see AHRI for specific applications)



REVOLV® R410A SWEAT FIT MANUFACTURED COILS

Part Number	Description	Nominal * A/C size	Nominal * H/P size	Height x Width x Depth H x W x D
1829S4A	COIL - REVOLV® SF R410A A/C H/P	*	*	18 ½" x 18" x 19 5/8"
1830S4A	COIL - REVOLV® SF R410A A/C H/P	*	*	14" x 18" x 19 5/8"
1831S4A	COIL - REVOLV® SF R410A A/C H/P	*	*	20 ½" x 18" x 20.5"
1836S4A	COIL - REVOLV® SF R410A A/C H/P	*	*	18" x 18" x 19 5/8"
1837S4A	COIL - REVOLV® SF R410A A/C H/P	*	*	20 ½" x 18" x 20.5"
1841S4A	COIL - REVOLV® SF R410A A/C H/P	*	*	24 ½" x 18" x 19 5/8"
1844S4A	COIL - REVOLV® SF R410A A/C H/P	*	*	18 ½" x 18" x 19 5/8"
1847S4A	COIL - REVOLV® SF R410A A/C H/P	*	*	22 ½" x 18" x 19 5/8"
1851S4A	COIL - REVOLV® SF R410A A/C H/P	*	*	19" x 18" x 21"
1854S4A	COIL - REVOLV® SF R410A A/C H/P	*	*	18 ½" x 18" x 19 5/8"
1855S4A	COIL - REVOLV® SF R410A A/C H/P	*	*	20 ½" x 18" x 19 5/8"
1856S4A	COIL - REVOLV® SF R410A A/C H/P	*	*	24 ½" x 18" x 19 5/8"

*NOTE: REFER TO AHRI LISTINGS FOR ACTUAL APPLICATIONS AND CAPACITIES

Revolv® R410A Manufactured Coil Accessories

18R72DB003	TXV KIT R410A REVOLV®	1.5-3.0T	1.5T	
18R72DB004	TXV KIT R410A REVOLV®	2.5-5.0T	4.0-5.0T	
1899911101	REVOLV® COIL UNIVERSAL DRAIN PAN			

Product Availability, Prices and Specifications Subject to Change without Notice



R22 Sweat Fit Manufactured Housing Coils

The **Revolv® R22 Coil** series is designed to be "THE" high efficiency A-Coil choice to be installed on new and existing down flow MH furnaces. Special drain pans available for up flow gas/oil applications.

Features and Benefits

Factory installed – TXV valve suitable for A/C or H/P applications

Coil – Built-in strainer for coil protection

UL® listed – Leak tested to 500 p.s.i. Code approved 2-opening drain pan

Dry-type pan – Does not maintain standing water

Kit – Contains drain hose, fittings, and furnace cover plates for gas/oil furnaces

Furnace Compatibility:

All standard mobile home furnaces *

Revolv® Coils work with many national brands in 13 and higher SEER A/C and H/P applications (see AHRI for specific applications) Compatible with 10/12 SEER A/C and H/P installations
See separate cross reference charts



REVOLV® R22 MANUFACTURED COILS

PART NUMBER	DESCRIPTION	NOMINAL SIZE SEE APPLICATION GUIDES AND AHRI	Height x Width x Depth H x W x D
1836QA-N WITH FITRITE® FITTINGS	COIL - REVOLV® QC R22 A/C H/P NITROGEN	1.5-3.0 T	14" x 18" x 19-5/8"
1849QA-N WITH FITRITE® FITTINGS	COIL - REVOLV® QC R22 A/C H/P NITROGEN	2.5-4.0 T	14" x 18" x 19-5/8"
1854QA-N WITH FITRITE® FITTINGS	COIL - REVOLV® QC R22 A/C H/P NITROGEN	2.5-5.0 T	18.5" x 18" x 19-5/8"
1836SA	COIL - REVOLV® SF R22 A/C H/P	1.5-3.0 T	18" x 18" x 19-5/8"
1849SA	COIL - REVOLV® SF R22 A/C H/P	2.5-4.0 T	18" x 18" x 19-5/8"
1854SA	COIL - REVOLV® SF R22 A/C H/P	2.5-5.0 T	18.5" x 18" x 19-5/8"

* NOTE: REFER TO AHRI LISTINGS FOR ACTUAL APPLICATIONS AND CAPACITIES

Revolv® R22 Manufactured Coil Accessories

1899910800	TXV KIT R22 REVOLV®	1.5-3.0 T	
1899910900	TXV KIT R22 REVOLV®	2.5-5.0 T	
1899911101	REVOLV® COIL UNIVERSAL DRAIN PAN		

MANUFACTURED HOUSING AC ACCESSORIES

THERMOSTATS		
PART NUMBER	DESCRIPTION	Weight Lbs.
02538747000	THERMOSTAT-HEATING / COOLING—4 WIRE PIGTAIL	1
111001	THERMOSTAT-COOL ONLY	1
111002	THERMOSTAT-HEAT ONLY	1
111003	THERMOSTAT-HEATING / COOLING 5 WIRE	1
111004	THERMOSTAT-DIGITAL PROGRAMABLE HEAT PUMP (2H1C)	1
111005	THERMOSTAT-DIGITAL NON PROGRAMABLE HEAT PUMP (2H1C)	1
111006	THERMOSTAT-DIGITAL PROGRAMABLE AC (1H1C)	1
111007	THERMOSTAT-DIGITAL NON PROGRAMABLE AC (1H1C)	1
111010	THERMOSTAT-DIGITAL MULTIFUNCTION	1

THERMOSTAT



111001

THERMOSTAT



111002

THERMOSTAT



111003

THERMOSTAT



111004

THERMOSTAT



111005

THERMOSTAT



111006

THERMOSTAT



111007

THERMOSTAT



111010

THERMOSTAT

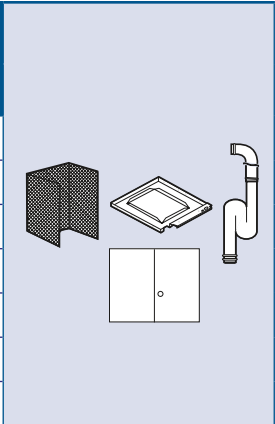


02538747000

MANUFACTURED HOUSING AC ACCESSORIES

FOR ALL REVOLV® EB SERIES ELECTRIC FURNACE APPLICATIONS

PART NUMBER	DESCRIPTION	WEIGHT LBS.
3500.8941B	COIL SHELF KIT DOWNFLOW EBXXC/D	6
3500.8941	INSULATION AND COIL SHELF PACKAGE - FOR DOWNFLOW EBXXB	8
3500.8961	INSULATION AND COIL SHELF PACKAGE - FOR UPFLOW EBXXB	8
3500.7211A	EB DOOR KIT & DOOR SUPPORT FOR UPFLOW APPLICATION	5
3501.9211	EBXXC/D 4 TON HALF LOUVERED DOOR	8
3501.9111	EBXXC/D SOLID DOOR - FOR TOP RETURN & UPFLOW	8
3501.9311	EBXXC/D 5 TON DOUBLE LOUVERED DOOR	8



COIL SHELF KIT



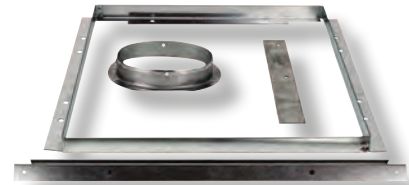
3500.8941B Coil Shelf Kit
Downflow EBxxC/D

INSULATION AND COIL SHELF PACKAGE



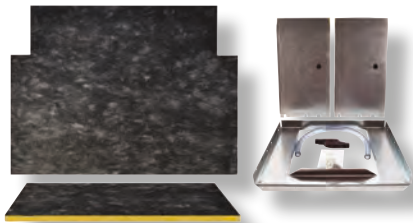
3500.8941 Insulation and Coil Shelf
Package - for Downflow EBxxB

EB DOOR KIT & DOOR SUPPORT FOR UPFLOW APPLICATION



3500.7211A EB Door Kit & Door
Support for Upflow Application

INSULATION AND COIL SHELF PACKAGE



3500.8961 INSULATION AND COIL
SHELF PACKAGE UPFLOW

EBXX ELECTRIC FURNACE OPTIONAL DOORS



3501.9211 EBXXC/D 4 TON HALF LOUVERED DOOR
3501.9111 EBXXC/D SOLID DOOR
3501.9311 DOOR EBXX 5 TON FULL LOUVERED DOOR

MANUFACTURED HOUSING AC ACCESSORIES

FOR ALL NORDYNE FURNACE APPLICATIONS (INTERTHERM/MILLER)

PART NUMBER	DESCRIPTION	WEIGHT LBS.
9536.7411	COIL CABINET W/ FILTER	6
13010001	COIL CABINET E2/E3 —KD	6
13010002	COIL CABINET- LOUVERED GRILLE ONLY	4

COIL CABINET

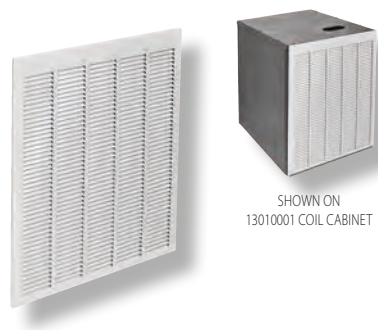
- UTILIZES NORDYNE FRONT GRILLE
- SHIPS FLAT-REDUCED FREIGHT EASY ASSEMBLY
- 23" HEIGHT-MAXIMUM ALLOWED WITH GRILLE
- USES STANDARD 20" x 25" x 1" FILTER



13010001 COIL CABINET E2-E4-KD

LOUVERED GRILLE

Replacement for Coil Cabinet



13010002 COIL GRILLE E2-E4-KD


BLOWERS AND ADAPTORS FOR OLDER REVOLV® FURNACES

PART NUMBER	DESCRIPTION
3500.6901	BLOWER - REVOLV® ELECTRIC 2-4 TONS
3500.7901	BLOWER - REVOLV® ELECTRIC 4+ TONS
7900.6051	BLOWER - REVOLV® GAS DGAT, 76-7900 ONLY 4 TON AC
7900.6061	BLOWER - REVOLV® GAS DGAT, 76-7900 ONLY 3.5 TON AC
7900.7741	BLOWER - REVOLV® GAS DGAA, DGAH-4 TON
7900.7751	BLOWER - REVOLV® GAS DGAA, DGAH-5 TON

BLOWERS AND ADAPTORS FOR OLDER NORDYNE FURNACES

PART NUMBER	DESCRIPTION
9536.7301	BLOWER - NORDYNE ELECTRIC ALL FEXX SERIES, E1EH
9536.7351	BLOWER - NORDYNE ELECTRIC E2EH ONLY
1888120854D	BLOWER - NORDYNE ELECTRIC E2EH-E2EB 4 -4.5 TON
9336.7901	BLOWER - NORDYNE GAS M1G-M1S SERIES-2-4.0 TON
1887120805	BLOWER - NORDYNE GAS M1 SERIES-4-4.5 TON
9536.7301	BLOWER ELECTRIC A/C

MANUFACTURED HOUSING AC ACCESSORIES

DUAL FUEL KIT	
PART NUMBER	DESCRIPTION
13010004	DUAL FUEL KIT
	

CONTROL BOXES FOR OLDER FURNACES (COLEMAN [®] , EVCON [™] , RED T [™])	
Part Number	Description
3500.5821	CONTROL PACKAGE FOR ADDING AC/HP W/2 WIRE (HEAT ONLY) T/STAT TO 3400, 3500, AND EBXXA FURNACES
3500.5841	CONTROL PACKAGE FOR ADDING AC/HP W/4 WIRE (HEAT/COOL) T/STAT TO 3400, 3500, AND EBXXA FURNACES
7900.6021	CONTROL PACKAGE FOR ADDING AC/HP W/2 WIRE (HEAT ONLY) T/STAT TO OLDER (PRE 1996) GAS FURNACES
18400001	CONTROL PACKAGE FOR ADDING AC/HP W/4 WIRE T/STAT (HEAT/COOL) TO OLDER (PRE 1996) GAS FURNACES



Packaged Air Conditioners

The Revolv® single packaged heat pumps are high efficiency self contained cooling and heating units that can be installed on a slab. Units are ETL and ETLc listed.

Features and Benefits

Quality Compressor – State of the art compressor is standard equipment.

Hi Pressure Switches – Ensure long compressor life.

Micro-Channel Coils – Both indoor and outdoor all aluminum coils are designed to optimize heat transfer, minimize size and cost, and increase durability and reliability. Eliminates corrosion.

ECM Blower Motor – Fixed torque energy efficient brushless DC ECM motor.

Permanently Lubricated Condenser Motor – A heavy duty PSC motor for long lasting reliability and quiet operation. Requires no maintenance and is completely protected from rain and snow.

Designed Using Galvanized Steel – With a polyester urethane coat finish. The 950 hour salt spray finish is 1.5 mil thick and resists corrosion 50% better than comparable units.

Compact Footprint and Profile – Make the RPC Series easy to install and transport.

Optional Electric Heat – Field installed 5 – 20 KW.

Warranty
10 Years Parts / 1 Year Labor
 Visit www.stylecrestinc.com
 for warranty registration



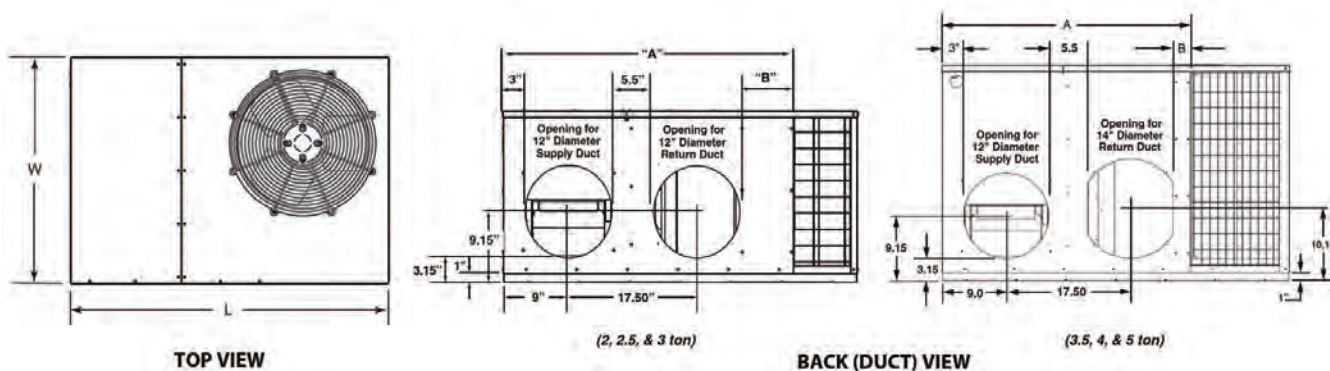
14 SEER



Revolv® 14 SEER Packaged Air Conditioners

REVOLV® PACKAGED AIR CONDITIONERS 14 SEER				
Tons Nominal	Unit SKU	Collar-Supply	Collar-Return	Unit Size W x L x H
2	RPC1424	294941A	294941A	35" x 49" x 22.2"
2.5	RPC1430	294941A	294941A	35" x 49" x 22.2"
3	RPC1436	294941A	294941A	35" x 49" x 22.2"
3.5	RPC1442	294941A	294942A	35" x 49" x 30.2"
4	RPC1448	294941A	294942A	35" x 49" x 30.2"
5	RPC1460	294941A	294942A	35" x 49" x 34.2"

HEAT STRIP KITS	
KW	SKU
5	H3HK005H-01C
10	H3HK010H-01C
15	H3HK015H-01C
20	H3HK020H-21C



REVOLV® PACKAGED AIR CONDITIONER DIMENSIONS					
Unit SKU	(L) Length	(W) Width	(H) Height	A	B
RPC1424	49"	35"	22.2"	35.02"	2.48"
RPC1430	49"	35"	22.2"	35.02"	2.48"
RPC1436	49"	35"	22.2"	35.02"	2.48"
RPC1442	49"	35"	30.2"	35.02"	2.48"
RPC1448	49"	35"	30.2"	35.02"	2.48"
RPC1460	49"	35"	34.2"	35.02"	2.48"



Packaged Heat Pumps

The Revolv® single packaged heat pumps are high efficiency self contained cooling and heating units that can be installed on a slab. Units are ET and ETLc listed.

Features and Benefits

First in Industry Patented Hot Gas Defrost –

Ensures complete, worry-free defrost.

Quality Compressor – State of the art compressor is standard equipment.

Hi/Low Pressure Switches – Ensure long compressor life.

All Aluminum Coils – Provides high corrosion resistance, lower refrigerant volume.

Designed using Galvanized Steel – With a polyester urethane coat finish. The 950 hour salt spray finish is 1.5 mil thick and resist corrosion 50% better than comparable units.

Compact Footprint and Profile – Make the RPH Series easy to transport and install..

Five Minute Restart Time Delay – When the unit shuts down, a five minute delay keeps the unit from restarting, eliminating the highest cause of compressor failure.

Outdoor Thermostat – Is standard equipment.

Optional Electric Heat – Field installed 5 – 20 KW.

Warranty

10 Years Parts / 1 Year Labor

Visit www.stylecrestinc.com for warranty registration



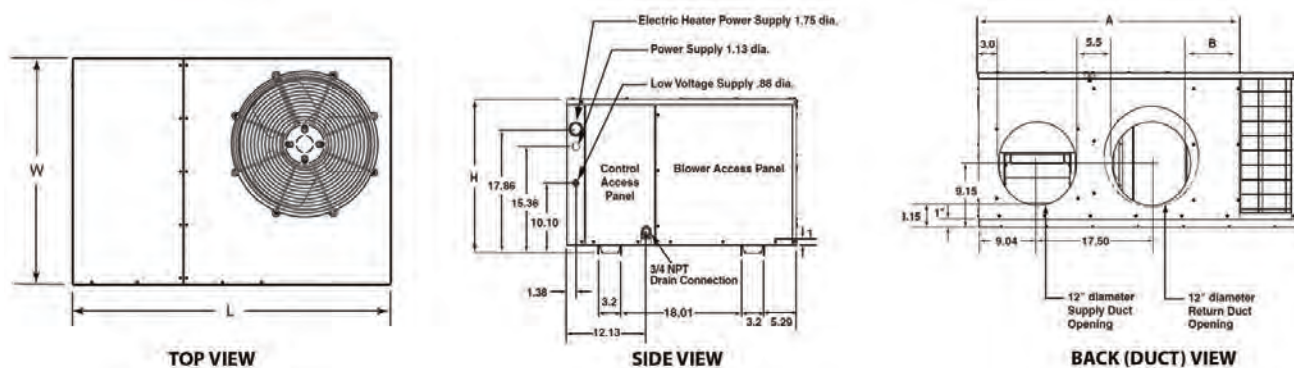
14 SEER



Revolv® 14 SEER Packaged Heat Pumps

REVOLV® PACKAGED HEAT PUMPS 14 SEER				
Tons Nominal	Unit SKU	Collar-Supply	Collar-Return	Unit Size W x L x H
2	RPH1424	294941A	294942A	35" x 49" x 30.2"
2.5	RPH1430	294941A	294942A	35" x 49" x 30.2"
3	RPH1436	294941A	294942A	35" x 49" x 30.2"
3.5	RPH1442	294941A	294942A	35" x 49" x 30.2"
4	RPH1448	294941A	294942A	35" x 63" x 38.2"
5	RPH1460	294941A	294942A	35" x 63" x 38.2"

HEAT STRIP KITS	
KW	SKU
5	H3HK005H-01C
10	H3HK010H-01C
15	H3HK015H-01C
20	H3HK020H-21C



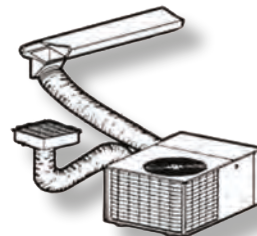
REVOLV® PACKAGED HEAT PUMP DIMENSIONS					
Unit SKU	(L) Length	(W) Width	(H) Height	A	B
RPH1424	49"	35"	30.2"	35.02"	2.48"
RPH1430	49"	35"	30.2"	35.02"	2.48"
RPH1436	49"	35"	30.2"	35.02"	2.48"
RPH1442	49"	35"	30.2"	35.02"	2.48"
RPH1448	63"	35"	38.2"	35.02"	2.48"
RPH1460	63"	35"	38.2"	35.02"	2.48"

PACKAGED SYSTEMS ACCESSORIES

SINGLE WIDE KIT FOR SELF CONTAINED AIR CONDITIONERS (TYPICAL)

ORDER ONE EACH OF THE FOLLOWING:

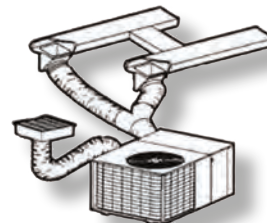
- 112012 ACCESSORY KIT
CONSISTS OF: 12" x 20" RETURN BOX & GRILLE
BLUE WASHABLE RETURN AIR FILTER
12" x 12" SUPPLY FITTING W/DAMPER



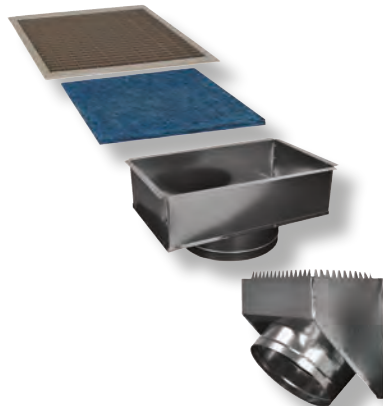
DOUBLE WIDE KIT FOR SELF CONTAINED AIR CONDITIONERS (TYPICAL)

ORDER ONE EACH OF THE FOLLOWING:

- 112012 ACCESSORY KIT (SEE SINGLE WIDE FOR INCLUDED ITEMS)
- 1101225 12" x 25' FLEX DUCT .047 R4
- 11121212 12" x 12" x 12" METAL WYE
- 7336.5801 DUCT CONNECTOR W/ DAMPER (1 REQUIRED FOR INSTALL)



SUPPLY / RETURN



- 112012 ACCESSORY KIT
12" SUPPLY, 12" RETURN

RETURN AIR KIT W/GRILLE



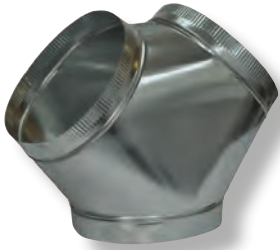
- 115012 12" RETURN AIR KIT W/GRILLE
- 115014 14" RETURN AIR KIT W/GRILLE
- 111220BRN GRILLE ONLY

FLEX DUCT



- 1101025 10" x 25' FLEX DUCT R4.2
- 1101225 12" x 25' FLEX DUCT R4.2
- 1101425 14" x 25' FLEX DUCT R4.2
- 1161025 10" x 25' FLEX DUCT R6
- 1161225 12" x 25' FLEX DUCT R6
- 1161425 14" x 25' FLEX DUCT R6
- 1181225 12" x 25' FLEX DUCT R8
- 1181425 14" x 25' FLEX DUCT R8

METAL WYE



- 11121010 12" x 10" x 10" METAL WYE
- 11121212 12" x 12" x 12" METAL WYE
- 111412 14" x 12" x 12" METAL WYE
- 11141414 14" x 14" x 14" METAL WYE

REDUCER INCREASER



- 1112108 REDUCER INCREASER 12"-10"
- 1114128 REDUCER INCREASER 14"-12"

DUCT COLLAR W/TABS



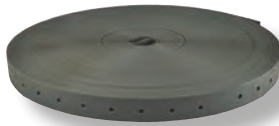
- 110010 10" COLLAR W/TABS
- 110120 12" COLLAR W/TABS
- 110140 14" COLLAR W/TABS

DRAWBANDS



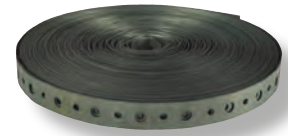
- 110225 DRAWBAND 36" LENGTH FOR FLEX DUCT / 50 PKG
- 110248 DRAWBAND 48" LENGTH FOR FLEX DUCT / 50 PKG
- 11187 DRAWBAND 14.1" L X .187 W

PIPE HANGER STRAP



- 1113038 PLASTIC, 3/4" x 100', .050 GAUGE ROLL

PIPE HANGER STRAP



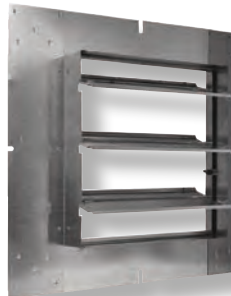
- 116507 GALVANIZED 3/4" x 100' 28 GAUGE ROLL

FABRIC FLEX DUCT STRAP



- 6014932 1-3/4" x 300' / FABRIC

BACKFLOW DAMPER



- 901083 PKG. AC BACKFLOW DAMPER GAS/OIL FURNACE
- 7900.6771 PKG. AC BACKFLOW DAMPER GAS/OIL FURNACE



Manufactured Housing



RE Series Electric Furnaces

The RE Series furnace is designed for all sizes of manufactured and modular homes. These units incorporate reliability and low maintenance. Units may be installed free standing in a utility room or enclosed in an alcove or closet. RE Series furnaces are A/C ready, with multiple blower combinations for cooling requirement.

Features and Benefits

- A/C and H/P ready** – for up through 4.0 tons.
- Available in** – Downflow and Upflow configurations.
- Built in full sized coil cabinet** – no need to add parts.
- Built in circuit breakers** – for safety and dependability.
- Nichrome heating elements** – for long lasting efficient heat.

Warranty

2 Years Parts / 1 Year Labor

Visit www.stylecrestinc.com
for warranty registration

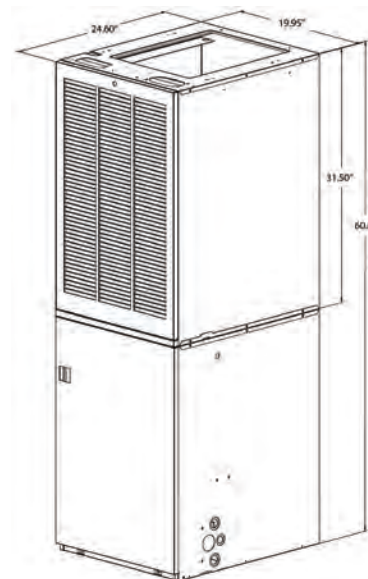


Revolv® RE Series Electric Furnaces

REVOLV® RE9 SERIES ELECTRIC FURNACE	
Model Number	Description
RE9D10C4	Electric 10KW downflow w/cabinet
RE9D12C4	Electric 12KW downflow w/cabinet
RE9D15C4	Electric 15KW downflow w/cabinet
RE9D17C4	Electric 17KW downflow w/cabinet
RE9D20C4	Electric 20KW downflow w/cabinet
RE9D23C4	Electric 23KW downflow w/cabinet
RE9U10C4	Electric 10KW Upflow w/cabinet
RE9U12C4	Electric 12KW Upflow w/cabinet
RE9U15C4	Electric 15KW Upflow w/cabinet
RE9U17C4	Electric 17KW Upflow w/cabinet
RE9U20C4	Electric 20KW Upflow w/cabinet
RE9U23C4	Electric 23KW Upflow w/cabinet

Electrical Specifications				
Model Number	Supply Circuit	Total Amperes	Maximum Over-current Rating	Minimum Circuit Ampacity
RE9D/U10C4	Single	44.6	60	56
RE9D/U12C4	Single	51.2	70	64
	Dual "A"	27.1	40	34
	Dual "B"	24.2	30	30
RE9D/U15C4	Single	65.4	90	82
	Dual "A"	44.6	60	56
	Dual "B"	20.8	30	26
RE9D/U17C4	Single	70.4	90	88
	Dual "A"	47.9	60	60
	Dual "B"	22.5	30	28
RE9D/U20C4	Single	86.2	125	108
	Dual "A"	44.6	60	56
	Dual "B"	41.7	60	52
RE9D/U23C4	Single	93.8	125	117
	Dual "A"	45.5	60	57
	Dual "B"	48.0	60	60

Revolv® RE9 Series Electric Furnace						
Electric Furnace Models	RE9D/U10C4	RE9D/U12C4	RE9D/U15C4	RE9D/U17C4	RE9D/U20C4	RE9D/U23C4
Rated Heating Output, Btuh (see note 1)	35,000	41,000	53,000	57,000	70,000	75,000
Watts (Total kw, Heating Elements and Blower)	10.4	12.0	15.4	16.6	20.4	22.0
Supply Voltage	240 Volts/60Hz/1-Phase					
Heating Elements, No.(Total kw)	2 (10.0)	2 (11.6)	3 (15.0)	3 (16.2)	4 (20.0)	4 (21.6)
Blower Wheel Size	10.5" Diameter, 8" Wide					
Motor Speed, H.P. Rating, Amps	4 Speed, 1/3 HP, 2.9					
Test ESP, in. w.c. Max	0.3					
Optional Cooling Available with factory installed blower	2.0 - 4.0 Ton					
Optional Heat Pump Available with factory installed blower	2.0 - 4.0 Ton					
Air Filter (Standard)	16" x 20" x 1" (nominal)					
Furnace Dimensions	Width - 20", Height - 60.63", Depth- 24.5"					
1. Heating output rated at listed voltage. For outputs at voltages other than 240V, multiply BTUH rating by the following factors: x 0.92 (230V), x 0.84 (220V), x 0.75 (208V)						



Clearances		
ALL MODELS	CLOSET	ALCOVE
Front ‡	6"	18"
Back	0"	0"
Sides	0"†	0"†
Top	0"	0"
Top and Sides of Duct	0"	0"
Bottom of Duct	0"	0"
‡ Service Clearance † For upflow application using upflow stand, 1" minimum per side.		



RG1 80% AFUE Gas Furnaces

The RG1 Series furnace is designed for all sizes of manufactured and modular homes. These units incorporate high efficiency, reliability, and low maintenance. Units may be installed free standing in a utility room or enclosed in an alcove or closet. M1 Series furnaces are available in A/C adaptable or A/C ready, with or without coil cavity box, multiple blower combinations for cooling requirements, and many burner options.

Features and Benefits

Sealed combustion – vents exhaust gases directly outdoors and draws in outside fresh air for combustion.

Choice of models – for up to 4 tons A/C and 3.5 tons H/P. *

Modern hot surface ignition – no pilot lights to blow out.

Low maintenance – sealed bearings on motors, reliable controls and burners.

Appliance quality – metal door with baked enamel finish for long life and easy cleaning.

Warranty

2 Years Parts / 1 Year Labor

10 Years Heat Exchanger

Visit www.stylecrestinc.com for warranty registration



* Use additional coil cabinet above 3.0 ton AC or HP



Revolv® RG1 AFUE 80% Gas Furnaces

REVOLV® RG1 80% AFUE GAS FURNACES

Model Number	Description
RG1D56N3	Gas - 80%, downflow, 56KBTU no cabinet, 3 ton blower
RG1D70N3	Gas - 80%, downflow, 70KBTU no cabinet, 3 ton blower
RG1D77N3	Gas - 80%, downflow, 77KBTU no cabinet, 3 ton blower
RG1D90N3	Gas - 80%, downflow, 90KBTU no cabinet, 3 ton blower
RG1D56C3	Gas - 80%, downflow, 56KBTU w/cabinet, 3 ton blower
RG1D70C3	Gas - 80%, downflow, 70KBTU w/cabinet, 3 ton blower
RG1D77C3	Gas - 80%, downflow, 77KBTU w/cabinet, 3 ton blower
RG1D90C3	Gas - 80%, downflow, 90KBTU w/cabinet, 3 ton blower
RG1D56N4	Gas - 80%, downflow, 56KBTU no cabinet, 4 ton blower
RG1D70N4	Gas - 80%, downflow, 70KBTU no cabinet, 4 ton blower
RG1D77N4	Gas - 80%, downflow, 77KBTU no cabinet, 4 ton blower
RG1D90N4	Gas - 80%, downflow, 90KBTU no cabinet, 4 ton blower

*Add cabinet for 3.5-4.0 ton applications-see sku 922594—922594
Coil cabinet-fits RG1, RG7*

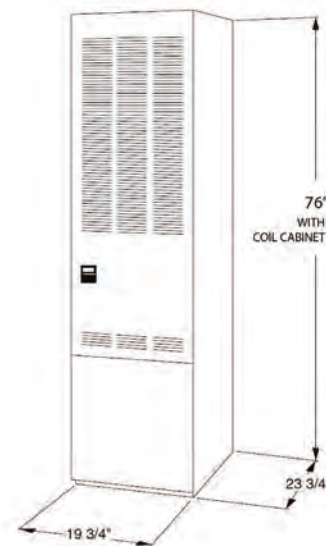
RG1 80% Gas Furnace Specifications

Furnace Model Number	Input KBTU/H	Output KBTU/H	Orifice Number Natural gas	Orifice Number LP	A/C Ready Tons	Shipping Weight Lbs
RG1D56N3	56	46	29	45	3	152
RG1D70N3	70	57	24	42	3	153
RG1D77N3	77	62	21	40	3	149
RG1D90N3	90	72	17	36	3	151
RG1D56C3	56	46	29	45	3	167
RG1D70C3	70	57	24	42	3	168
RG1D77C3	77	62	21	40	3	164
RG1D90C3	90	72	17	36	3	166
RG1D56N4	56	46	29	45	4	156
RG1D70N4	70	57	24	42	4	157
RG1D77N4	77	62	21	40	4	156
RG1D90N4	90	72	17	36	4	156

Clearances

All Models	Closet	Alcove
Front	6"	18"
Back	0"	0"
Sides	0"	0"
Roof Jack	0"	0"
Top	6"	6"
Top and Sides of Duct	0"	0"
Bottom of Duct	0"	0"
B Cabinet	0"	0"
A Cabinet (w/coil box)	0"	0"
A Cabinet (w/o coil box)	1/4"	1/4"

DIMENSIONS





RG7 95% + AFUE Gas Furnaces

The high efficiency downflow gas furnace is especially designed for Modular Housing. It may be installed in a utility room, or enclosed in a closet. CSA design certified for use in the United States and Canada.

Features and Benefits

High Efficiency – 95% AFUE.

Sealed combustion – can be vented vertically or horizontally with PVC pipe.

Sealed combustion - Vents Exhaust Gases – Directly outdoors and draws in outside fresh air for combustion.

Choice of models – for A/C and H/P applications through 4 tons A/C, and 3.5 H/P*

Modern hot surface ignition – no pilot lights to blow out.

Multi-speed direct drive blower.

Low maintenance: sealed bearings on motors, reliable controls and burners.

Appliance quality – metal door with baked enamel finish for long life and easy cleaning.

Warranty

2 Years Parts / 1 Year Labor

10 Years Heat Exchanger

Visit www.stylecrestinc.com
for warranty registration



WITH COIL CABINET



WITHOUT COIL CABINET



* Use additional coil cabinet
above 3.0 ton AC or HP



Revolv® RG7 95%+ AFUE Gas Furnaces

REVOLV® RG7 95%+ GAS FURNACES		
Model Number	Description	Shipping Weight Lbs
RG7D45N4	Gas - 95%, downflow, 45KBTU, no cabinet, 4 ton blower	150
RG7D60N4	Gas - 95%, downflow, 60KBTU, no cabinet, 4 ton blower	150
RG7D72N4	Gas - 95%, downflow, 72KBTU, no cabinet, 4 ton blower	155
RG7D45C4	Gas - 95%, downflow, 45KBTU, w/cabinet, 4 ton blower	170
RG7D60C4	Gas - 95%, downflow, 60KBTU, w/cabinet, 4 ton blower	170
RG7D72C4	Gas - 95%, downflow, 72KBTU, w/cabinet, 4 ton blower	175

VENTING

All models are approved for both vertical and horizontal direct (2 pipe) venting applications. See Vent Table below for specified sizes and allowable lengths.

Maximum Direct Vent, Dual Pipe Length (ft.)*

RG7 Inputs (BTUH)	Inlet / Outlet 3 in. Diameter	Inlet / Outlet 2 in. Diameter
45,000	60	30
60,000	60	30
72,000	60	30

***NOTES:**

1. Subtract 3.5 ft. for each additional 3" 90 degree elbow.
2. Two 45 degree elbows are equivalent to one 90 degree elbow.
3. One short radius elbow is equivalent to two long radius elbows
4. Do not include termination elbows in calculation of vent length
5. This table is applicable for elevations from sea level to 2,000 ft.
For higher elevations decrease vent pipe lengths by 8% per 1000 ft. of altitude.
6. Only the listed pipe materials are approved for use with RG7 condensing furnaces.
7. For Canadian applications, use ULC S636 approved material.

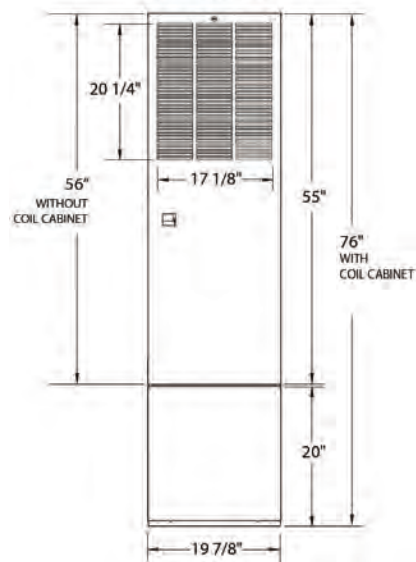
RG7 95% Gas Furnace Specifications

Furnace Model Number	Input KBTU/H	Output KBTU/H	A/C Ready Tons
RG7D45N4	45	42.75	4
RG7D60N4	60	57	4
RG7D72N4	72	68.4	4
RG7D45C4	45	42.75	4
RG7D60C4	60	57	4
RG7D72C4	72	68.4	4

Clearances

ALL MODELS	CLOSET	ALCOVE
Front	1"	1"
Back	0"	0"
Sides	0"	0"
Vent	0"	0"
Top	6"	6"
Duct (Plenum) (w/coil box)	0"	0"
Duct (Plenum) (w/o coil box) within 3 feet	1/4"	1/4"

DIMENSIONS





RO1 Oil Furnaces

The RO1 oil furnace is designed for all sizes of manufactured and modular homes. These units incorporate high efficiency, reliability, and low maintenance. Units may be installed free standing in a utility room or enclosed in an alcove or closet. RO1 oil furnaces are A/C ready, with coil cavity box.

Features and Benefits

Sealed Combustion System—Vents exhaust gas directly outdoors and draws in 100% outside air for the burner.

Easy Open Pawl Latch—Secures the door firmly for transit, yet allows easy removal for access.

Large, Effective Air Filter—Room air is cleaner with this permanent washable filter.

High Efficiency Drum Heat Exchanger—Delivers optimum heat transfer with low air resistance.

Appliance Quality Door—Protects against rust and other corrosion. Baked enamel finish allows for easy cleaning.

Fully Insulated Cabinet—Insures minimized heat loss and quiet operation.

Reliable Burner—With uniform flame pattern extends life of heat exchanger.

Warranty

2 Years Parts / 1 Year Labor

10 Years Heat Exchanger

Visit www.stylecrestinc.com for warranty registration



Product Availability, Prices and Specifications Subject to Change without Notice

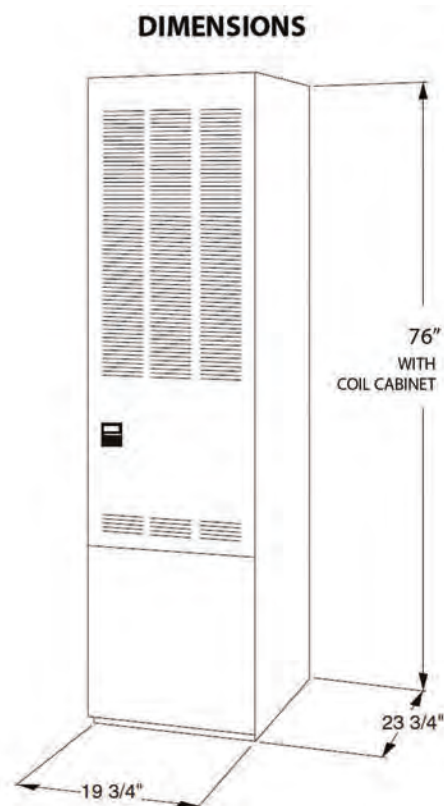


Revolv® R01 Oil Furnaces

REVOLV® R01 OIL FURNACES		
Model Number	Description	Shipping Weight Lbs
RO1D66C3	Oil, downflow, 66KBTU, with cabinet, 3 ton blower	167
RO1D86C3	Oil, downflow, 86KBTU, with cabinet, 3 ton blower	174

R01 Oil Furnace Specifications			
Model Number	Input MBtu/h	Output MBtu/h	A/C Ready Tons
RO1D66C3	66	56	3
RO1D86C3	86	73	3

Clearances		
All Models	Closet	Alcove
Front	6"	18"
Back	0"	0"
Sides	0"	0"
Roof Jack	0"	0"
Top	6"	6"
Top and Sides of Duct	0"	0"
Bottom of Duct	0"	0"
B Cabinet	0"	0"
A Cabinet (w/coil box)	0"	0"
A Cabinet (w/o coil box)	1/4"	1/4"



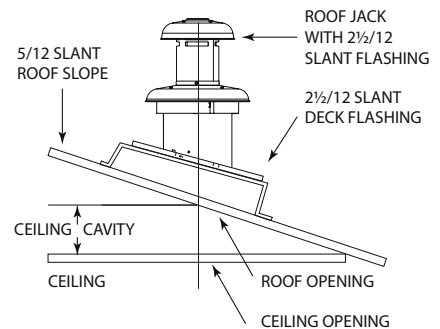
RE9, RG1, AND RO1 FURNACE ACCESSORIES

RE9, RG1 & RO1 Furnace Accessories	
Description	Part Number
Automatic Cavity / Backflow Damper	901083
Ceiling Rings (2 piece adjustable)	902521
Plenum / Duct Connectors	Part Number
11.25 x 13.50 x 0.88 12 / carton	901987A
11.25 x 13.50 x 2.00 12 / carton	901988A
11.25 x 13.50 x 4.25 6 / carton	901989A
11.25 x 13.50 x 6.25 6 / carton	901990A
11.25 x 13.50 x 8.25 4 / carton	901991A
11.25 x 13.50 x 10.25 3 / carton	901992A
11.25 x 13.50 x 12.25 3 / carton	901993A
11.25 x 13.50 x 6.25 24 / carton	902681A
Roof Jacks	Part Number
SAW2135-2A	903662
SAW2747-2A	903663
SAW3563-2A	903664
SAW5195-2A	920638
SAW2747-4A	903678A
SAW3563-4A	903665A
SAW5195-4A	903666
Sloped Roof Flashings	Part Number
2.5" in 12" - 4/carton	903893
3" in 12" - 4/carton	903894
4" in 12" - 2/carton	903895
Coil Cabinet	922594

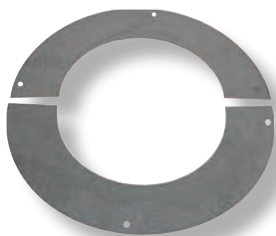
Add cabinet sku 922594 for
3.5-4.0 ton applications
Coil cabinet-fits RG1, RG7



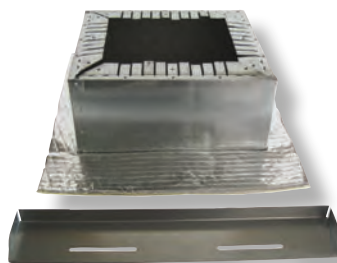
Roof Jack With 2 1/2 / 12 Slant Flashing



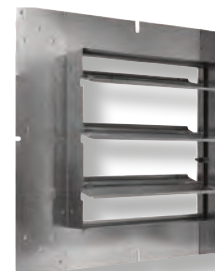
Ceiling Rings



Plenum / Duct Connectors



Automatic Cavity / Backflow Damper



Product Availability, Prices and Specifications Subject to Change without Notice

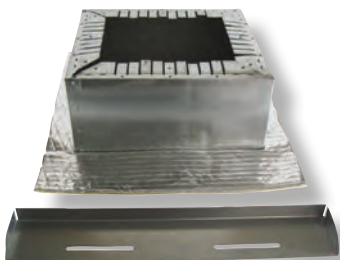
RG7 FURNACE ACCESSORIES

RG7 Furnace Accessories	
Description	Part Number
Automatic Cavity / Backflow Damper	901083
Plenum / Duct Connectors	
11.25 x 13.50 x 0.88 12 / carton	901987A
11.25 x 13.50 x 2.00 12 / carton	901988A
11.25 x 13.50 x 4.25 6 / carton	901989A
11.25 x 13.50 x 6.25 6 / carton	901990A
11.25 x 13.50 x 8.25 4 / carton	901991A
11.25 x 13.50 x 10.25 3 / carton	901992A
11.25 x 13.50 x 12.25 3 / carton	901993A
11.25 x 13.50 x 6.25 24 / carton	902681A
Vent Transition RG7 - 8"	904106
Coil Cabinet	922594

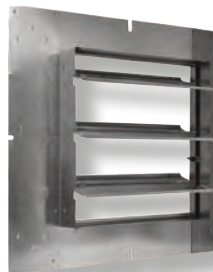
Add cabinet sku 922594 for 3.5-4.0 ton applications
Coil cabinet-fits RG1, RG7



Plenum / Duct Connectors



Automatic Cavity / Backflow Damper



Vent Transition RG7 - 8"



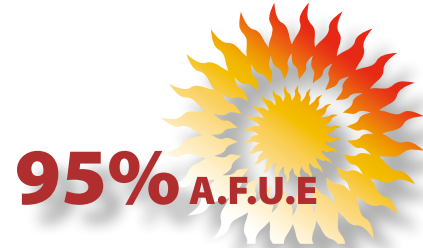


VMC Series Gas Manufactured Housing Furnace

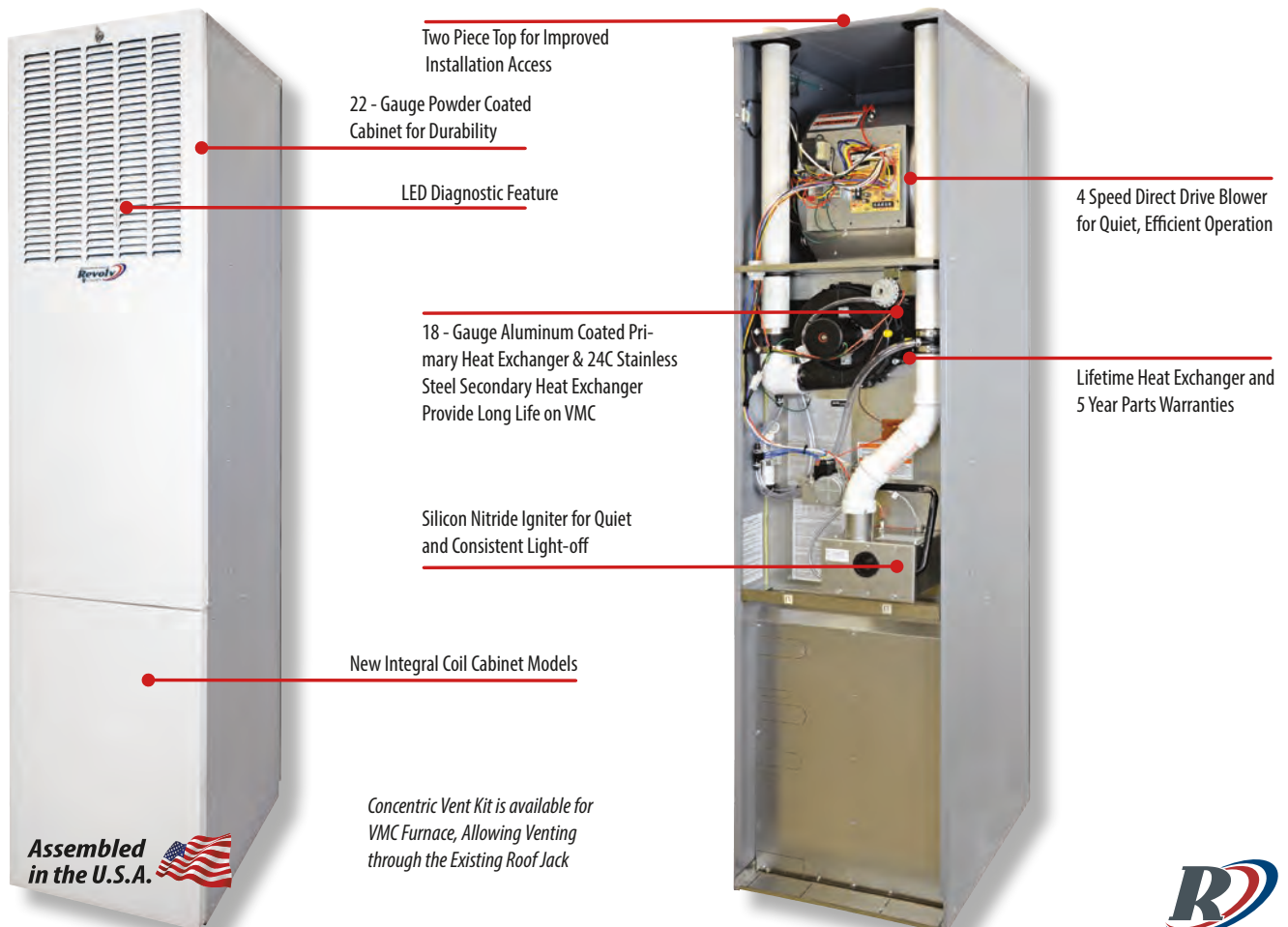
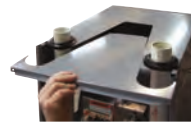
Features and Benefits

- Ease of installation** – fits standard MH furnace footprint.
- Easy conversion from natural gas to propane**—all models have convertible gas valves.
- A/C ready** – up to 4.0 tons.*
- 4-Speed blower**—easily adapted to air flow needs of the home.
- Lifetime** – heat exchanger warranty.
- ETL Listed**
- Sealed Combustion design** – provides draws combustion air from the outside.
- 18-Gauge Aluminum** – Coated Primary Heat Exchanger & 24C Stainless Steel Secondary Heat Exchanger Provide Long Life on VMC.
- Standard footprint** – easily replaces older MH furnaces
- New high capacity** – built-in coil cabinet
- Energy Star** – models available

*3.5 ton on 50K BTU 4.0 ton on 75K BTU



Warranty
5 Years Parts
Lifetime Heat Exchanger
Visit www.stylecrestinc.com
for warranty registration



Product Availability, Prices and Specifications Subject to Change without Notice



Revolv® VMC Series Gas Furnaces

REVOLV® VMC GAS FURNACES					
PART NUMBER	ITEM DESCRIPTION	INPUT MBH	OUTPUT MBH	DIMENSIONS H x W x D	WT. LBS.
08540005	FURNACE - GAS - 50K-95% - 3.5 T - VMC	50	48	76-1/8" x 18 3/4" x 25-3/4"	205
08540006	FURNACE - GAS - 75K-95% - 4.0 T - VMC	75	72	76-1/8" x 18 3/4" x 25-3/4"	205
08540007	FURNACE - GAS - 50K-95% - 3.5 T - VMC-ES★	50	48	76-1/8" x 18 3/4" x 25-3/4"	205
08540008	FURNACE - GAS - 75K-95% - 4.0 T - VMC-ES★	75	72	76-1/8" x 18 3/4" x 25-3/4"	205
Revolv® Gas Furnace Accessories					
08560001	COMBUSTIBLE BASE				
08560002	CONCENTRIC VENT KIT with ROOF FLASHING				
08560005	VMC - CONCENTRIC VENT KIT				
08560006	VMC - ROOF FLASHING KIT				
08560007	VMC - 3"X4" DRAFT TRANSITION				
08560008	VMC - 3"X5" DRAFT TRANSITION				
08560009	VMC - ROOF JACK CLOSEOFF				
08560003	COIL CABINET 20"				
08560004	COIL CABINET 24"				



★ THE NEW VMC ENERGYSTAR
ES- MODELS NOW AVAILABLE ★



VMA Series Gas Manufactured Housing Furnace

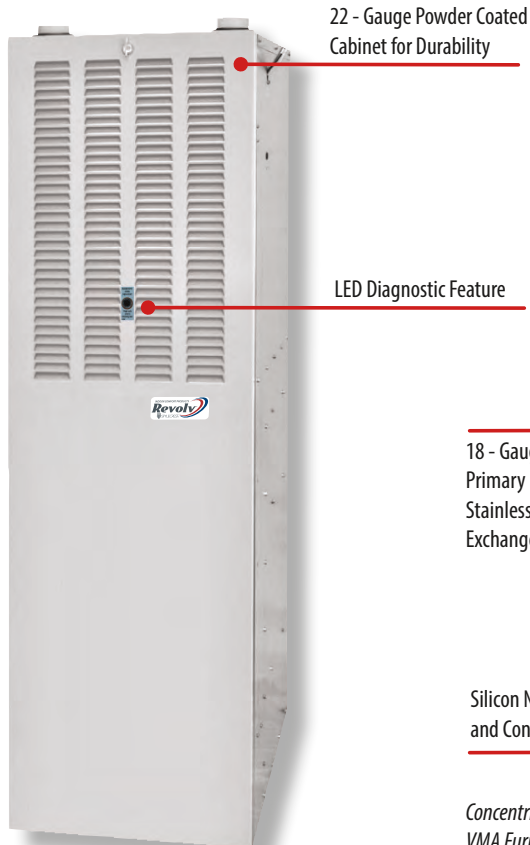
Features:

- Ease of installation** – fits standard MH furnace footprint.
- Easy conversion from natural gas to propane**—all models have convertible gas valves.
- A/C ready** – up to 4.0 tons.*
- 4-Speed blower** – easily adapted to air flow needs of the home.
- Lifetime** – heat exchanger warranty.
- ETL Listed**
- Sealed Combustion design** – provides draws combustion air from the outside.
- 18-Gauge Aluminum** – Coated Primary Heat Exchanger & 24C Stainless Steel Secondary Heat Exchanger Provide Long Life on VMA.
- Standard footprint** – easily replaces older MH furnaces.
- New high capacity** – built-in coil cabinet.
- Energy Star** – models available.

*3.5 ton on 50K BTU 4.0 ton on 75K BTU



Warranty
5 Years Parts
Lifetime Heat Exchanger
 Visit www.stylecrestinc.com
 for warranty registration



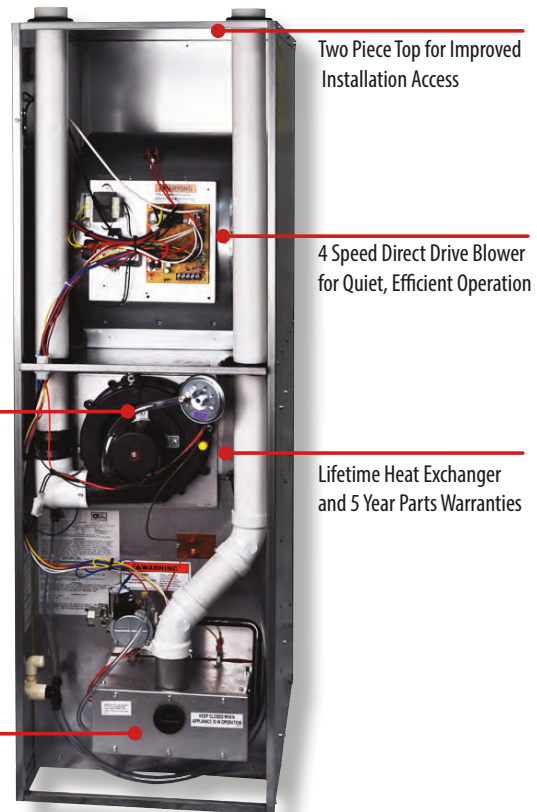
22 - Gauge Powder Coated Cabinet for Durability

LED Diagnostic Feature

18 - Gauge Aluminum Coated Primary Heat Exchanger & 24C Stainless Steel Secondary Heat Exchanger Provide Long Life on VMA

Silicon Nitride Igniter for Quiet and Consistent Light-off

Concentric Vent Kit is available for VMA Furnace, Allowing Venting through the Existing Roof Jack



Two Piece Top for Improved Installation Access

4 Speed Direct Drive Blower for Quiet, Efficient Operation

Lifetime Heat Exchanger and 5 Year Parts Warranties

Assembled in the U.S.A.

Product Availability, Prices and Specifications Subject to Change without Notice



Revolv® VMA Series Gas Furnaces

REVOLV® VMA GAS FURNACES					
PART NUMBER	ITEM DESCRIPTION	INPUT MBH	OUTPUT MBH	DIMENSIONS H x W x D	WT. LBS.
08540003	FURNACE - GAS - 50K-95% - 3.5 T - VMA	50	48	57" x 18" x 25-3/4"	175
08540004	FURNACE - GAS - 75K-95% - 3.5 T - VMA	75	72	57" x 18" x 25-3/4"	175
REVOLV® GAS FURNACE ACCESSORIES					
08560001	COMBUSTIBLE BASE				
08560002	CONCENTRIC VENT KIT with ROOF FLASHING				
08560005	VMA - CONCENTRIC VENT KIT				
08560006	VMA - ROOF FLASHING KIT				
08560007	VMA - 3"X4" DRAFT TRANSITION				
08560008	VMA - 3"X5" DRAFT TRANSITION				
08560009	VMA - ROOF JACK CLOSEOFF				
08560003	COIL CABINET 20"				
08560004	COIL CABINET 24"				

ROOF FLASHING KIT



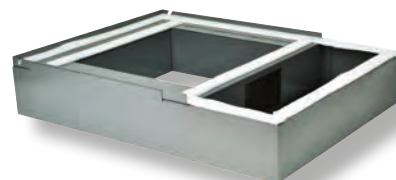
08560006 VMA ROOF FLASHING KIT

ROOF JACK CLOSEOFF



08560009 VMA ROOF JACK CLOSEOFF

COMBUSTIBLE BASE



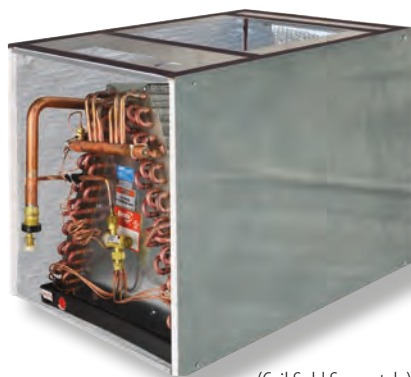
08560001 COMBUSTIBLE BASE

CONCENTRIC VENT KIT



08560005 VMA CONCENTRIC VENT KIT

COIL CABINET



(Coil Sold Separately)

08560003 VMA COIL CABINET 20"
08560004 VMA COIL CABINET 24"

DRAFT TRANSITION



08560007 VMA DRAFT TRANSITION 3" x 4"
08560008 VMA DRAFT TRANSITION 3" x 5"

A.C. DISCONNECT SWITCH

THREE-PIECE CONSTRUCTION
UP OPENING



598064 NONFUSIBLE 60 AMP

CONNECTORS



- 598042 1/2" STRAIGHT CONNECTOR
25/CTN
- 598043 3/4" STRAIGHT CONNECTOR
10/CTN
- 598045 1/2" 90° ELBOW CONNECTOR
10/CTN
- 598046 3/4" 90° ELBOW CONNECTOR
10/CTN

LIQUID-TIGHT CONDUIT KIT

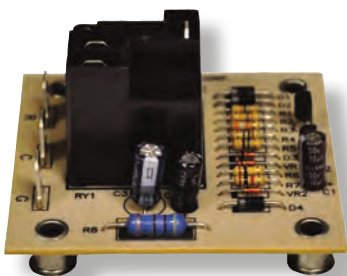
FOR A.C. UNIT HOOKUP
WIRE NONMETALLIC
CONNECTORS
ASSEMBLY, WIRE, CONDUIT & CONNECTORS



- 598077 3/4" x 6', #8 WIRE
- 598071 1/2" x 4', #10 WIRE
- 598073 1/2" x 6', #10 WIRE
- 598079 3/4" x 6', #6 WIRE

TIME DELAY RELAY

• REQUIRED WITH SOME APPLICATIONS
• 8 SECOND DELAY



6918.5011 TDR SWITCH

LIQUID-TIGHT CONDUIT

FLEXIBLE, NONMETALLIC, TYPE B



- 598040 1/2" CONDUIT 100'
- 598041 3/4" CONDUIT 100'

CONDENSATION DRAIN TRAP

3/4"



5015411 3/4" CONDENSATION DRAIN TRAP

A/C PADS

DISTRIBUTES WEIGHT EVENLY, RESISTS BREAKAGE - LIGHT-WEIGHT, EASY TO INSTALL!



- 1124242D PAD A/C 24 X 24 X 2"
- 1130302D PAD A/C 30 X 30 X 2"
- 1134342D PAD A/C 34 X 34 X 2"
- 1124243D PAD A/C 24 X 24 X 3"
- 1130303D PAD A/C 30 X 30 X 3"
- 1132323D PAD A/C 32 X 32 X 3"
- 1136363D PAD A/C 36 X 36 X 3"
- 1136483D PAD A/C 36 X 48 X 3"
- 1145583D PAD A/C 45 X 58 X 3"
- 1145583D PAD A/C 45 X 58 X 3"
- 1152523D PAD A/C 52 X 52 X 3"

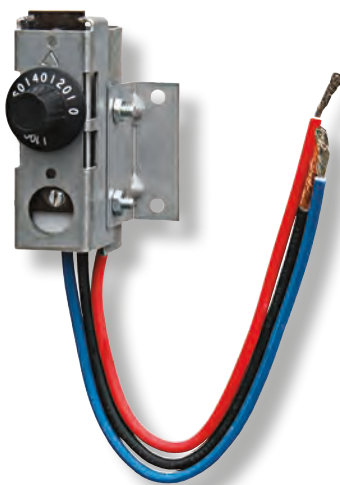
- H3232-4 PAD A/C 32 X 32 X 4"-150MPH
- H3636-4 PAD A/C 36 X 36 X 4"-150MPH
- H3652-4 PAD A/C 36 X 52 X 4"-150MPH
- 1145584 PAD A/C 45 X 58 X 4"-150MPH

- 1138524HT PAD-AC 38" X 52" X 4"-175MPH
- 1145584HT PAD-AC 45" X 58" X 4"-175MPH

1136368HP PAD-HP W/RISER 36" X 36" X 8"

OTHER SIZES AVAILABLE!

SINGLE OUTDOOR THERMOSTAT



111020 THERMOSTAT
OUTDOOR/SINGLE

METAL FLOOR REGISTERS

- SMOOTH OPERATION
- DUAL GATE, DIRECTIONAL AIR FLOW PADDLES
- WIDE FLANGES ON ALL FOUR SIDES
- MULTI-POINT WELDS



DOES NOT INCLUDE SCREWS

- 11CL48B 4" x 8" BROWN
- 11CL48W 4" x 8" WHITE
- 11CL410B 4" x 10" BROWN
- 11CL410W 4" x 10" WHITE
- 11CL412B 4" x 12" BROWN
- 11CL412W 4" x 12" WHITE

PLASTIC FLOOR REGISTERS

DISHWASHER SAFE - NO SHARP EDGES
LIGHTWEIGHT, NEARLY INDESTRUCTIBLE



- 1178481 4" x 8" WHITE - 40/CTN
- 1178487 4" x 8" BROWN - 40/CTN
- 1178401 4" x 10" WHITE - 40/CTN
- 1178407 4" x 10" BROWN - 40/CTN

BACKFLOW DAMPER



- 901083 PKG. AC BACKFLOW DAMPER GAS/OIL FURNACE
- 7900.6771 PKG. AC BACKFLOW DAMPER GAS/OIL FURNACE

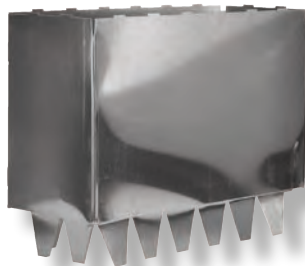
DRAFT CAP

FOR SINGLE WALL PIPE APPLICATION



- 522086 4" FLUE SIZE—8/CTN
- 522095 5" FLUE SIZE—8/CTN

REGISTER COLLARS



- 11486 4" W x 8" D x 6" LONG
48/CTN
- 114106 4" W x 10" D x 6" LONG
48/CTN

UNIVERSAL THERMOCOUPLE KITS



- COUPLER AND ADAPTOR
- 11921 18" KIT
 - 11923 30" KIT

FILTER FOR BLEND AIR SYSTEM



- 7681.7331 FILTER FOR BLEND AIR SYSTEM

FURNACE FILTER



- 11050001 FILTER 2 PAK 17" x 24" TRIMMABLE

FURNACE FILTER



- 110611 TECH FAB BLUE FILTER WASHABLE

FURNACE FILTERS



1122515 16" x 20" FIBERGLASS FILTER
1122517 20" x 20" FIBERGLASS FILTER

FURNACE FILTERS



1162036 1/4" x 19" x 36" FOAM FILTER
1161026 1/4" x 16" x 26" FOAM FILTER
FOR MILLER/INTERTHERM
1163054 1/4" x 19" x 54" FOAM FILTER
FOR MILLER/INTERTHERM

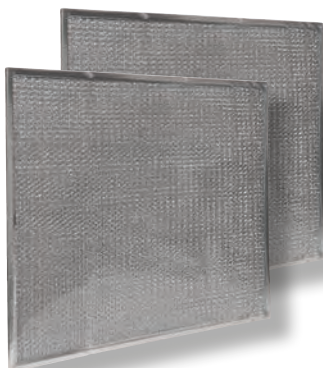
FURNACE FILTER



119401 METAL FILTER 15.5" x 20" EACH
1196935689 FILTER / METAL
15.9" x 19"(PAIR)

FURNACE FILTER KITS

TWO FILTERS WITH MOUNTING BRACKETS



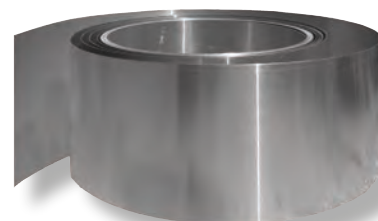
921784A FILTER KIT 15" x 17" MC 18"
921785A FILTER KIT 17" x 21" MC 24"
1006697 FILTER KIT 17" x 28" MC 29"

FURNACE FILTER



07540020 FILTER-VMA/C 1" x 18" x 24"

METAL FLASHING



60850 8" x 50' ALUMINUM
601050 10" x 50' ALUMINUM
6010501 10" x 50' GALVANIZED
601250 12" x 50' ALUMINUM

THERMOSTAT

- RUGGED SNAP-ACTION CONTACTS
- ADJUSTABLE HEAT ANTICIPATOR
- BI-METAL THERMOMETER
- CLASSIC WHITE COLOR



111001 COOL ONLY THERMOSTAT

111002 HEAT ONLY THERMOSTAT

THERMOSTAT

- RUGGED SNAP-ACTION CONTACTS
- ADJUSTABLE HEAT ANTICIPATOR
- BI-METAL THERMOMETER
- HEAT/COOL MODEL INCLUDES SWITCHING SUBBASE
- HEAT/COOL MODEL COMPATIBLE WITH ELECTRIC HEAT SYSTEMS
- CLASSIC WHITE COLOR



111003 HEAT/COOL THERMOSTAT

THERMOSTAT

- HEATING AND COOLING 4 WIRE (24)



02538747000 THERMOSTAT HEAT/COOL 4 WIRE

THERMOSTAT

NON-PROGRAMMABLE

- FOSSIL FUEL OR ELECTRIC HEAT COMPATIBLE
- LARGE LCD WITH BACKLIGHT
- SELECTABLE CELSIUS OR FAHRENHEIT TEMPERATURE DISPLAY
- INCLUDES B/O TERMINALS
- ELECTRONIC ACCURACY



FURNACES AND A/C

111007 DIGITAL NON PROG. T-STAT 1H/1C

THERMOSTAT

PROGRAMMABLE

- FOSSIL FUEL OR ELECTRIC HEAT COMPATIBLE
- LARGE LCD WITH BACKLIGHT
- SELECTABLE CELSIUS OR FAHRENHEIT TEMPERATURE DISPLAY
- INCLUDES B/O TERMINALS
- ELECTRONIC ACCURACY



FURNACES AND A/C

111006 DIGITAL PROG. T-STAT 1H/1C

THERMOSTAT

NON-PROGRAMMABLE

- ELECTRIC HEAT COMPATIBLE
- LARGE LCD WITH BACKLIGHT
- SELECTABLE CELSIUS OR FAHRENHEIT TEMPERATURE DISPLAY
- INCLUDES B/O TERMINALS
- ELECTRONIC ACCURACY



FURNACES AND HEAT PUMP

111005 DIGITAL NON PROG. T-STAT 2H/1

THERMOSTAT PROGRAMMABLE

- ELECTRIC HEAT COMPATIBLE
- LARGE LCD WITH BACKLIGHT
- SELECTABLE CELSIUS OR FAHRENHEIT TEMPERATURE DISPLAY
- INCLUDES B/O TERMINALS
- ELECTRONIC ACCURACY



FURNACES AND HEAT PUMP

111004 DIGITAL PROG. T-STAT 2H/1C

THERMOSTAT DIGITAL MULTI FUNCTION

- LARGE EASY-TO-READ BACKLIT TOUCH SCREEN DISPLAY WITH EASY TO USE SETUP
- USER SELECTABLE PROGRAMMING (7 DAY, 5/11 DAY WITH 4 TIME AND TEMP SETTINGS PER PROGRAM)
- ENERGY STAR RATED-MEETS CALIFORNIA BUILDING CODE, TITLE 24
- MAINTAINS ROOM TEMPERATURE +/- 1° F
- APPLICABLE FOR SINGLE AND MULTIPLE STAGE HEAT (A/C AND H/P OPERATION)
- WIRING OPTIONS-BATTERY OPERATION OR HARD-WIRED WITH BATTERY BACKUP
- BUILT IN DIAGNOSTIC INDICATOR
- FILTER CHANGE REMINDER
- AUTO CHANGEOVER OPTION-AUTOMATICALLY CHANGES FROM HEATING MODE TO COOLING
- TEMPORARY TEMPERATURE OVERRIDE-15 MINUTE OR 7-DAY VACATION MODES
- DUAL FUEL CAPACITY

111010 DIGITAL PROG. T-STAT MULTIFUNCTION



HEATING & AIR CONDITIONING

ALPHA INDEX

—E—

HEATING & COOLING

Furnaces, Air Conditioners, Heat Pumps, Accessories

A

A.C. DISCONNECT SWITCH E-43

A/C PADS E-44

AIR CONDITIONER

PACKAGED AIR CONDITIONERS E-21, 22

SPLIT SYSTEM 13 S.E.E.R. ACCUCHARGE®A E-3,4

SPLIT SYSTEM 14 S.E.E.R. ACCUCHARGE®A E-5,6

SPLIT SYSTEM 13 S.E.E.R. SWEAT FIT E-11,12

SPLIT SYSTEM 14 S.E.E.R. SWEAT FIT E-13, 14

B

BACKFLOW DAMPER E-26,35, 36, 44

BLOWER

BLOWER EB SERIES E-19, 30, 32, 34

C

CHIMNEY CROWN E-28

COIL

R22 SWEAT FIT E-16

R410A SWEAT FIT E-15

COIL CABINET E-19, 30, 31, 35, 36, 38, 40, 41

COIL SHELF KIT

FOR DOWNFLOW EBXXB E-18

COMBUSTIBLE BASE E-41

CONCENTRIC VENT KIT E-41

CONDENSATION DRAIN TRAP E-43

CONNECTORS E-35, 36, 43

CONTROL BOXES E-16

D

DRAFT CAP E-45

DRAFT TRANSITION E-41

DRAWBANDS E-26

DUAL FUEL KIT E-20

DUCT COLLAR W/ TABS E-26

E

EBXX ELECTRIC FURNACE OPTIONAL DOORS E-18

EXTERNAL ROOF JACK EXTENSION E-28

F

FABRIC FLEX DUCT STRAP E-26

FILTER

FIBERGLASS FILTER E-45, 46

FILTER FOR BLEND AIR SYSTEM E-45

FOAM FILTER E-46

METAL FILTER E-45, 46

TECH FAB BLUE FILTER WASHABLE E-45, 46

TRIMMABLE E-45

FITRIGHT® TO SWEAT FIT STUB KITS E-8

FLEX DUCT E-19,20

FLOOR REGISTERS

METAL E-44

PLASTIC E-44

FURNACE

RE9 ELECTRIC E-27,28

RG1 GAS E-29,30

RG7 GAS E-31, 32

RO1 OIL E-33, 34

VMA SERIES GAS E-39, 40

VMC SERIES GAS E-37, 38

RE9, RG1, AND RO1 FURNACE ACCESSORIES E-35

RG7 FURNACE ACCESSORIES E-36

H

HVAC SYSTEMS DIAGRAMS E-1

HVAC DEFINITIONS AND TERMINOLOGY E-2

HEAT PUMP

13 S.E.E.R. R410A PACKAGED HEAT PUMPS E-23, 24

SPLIT SYSTEM 13 S.E.E.R. ACCUCHARGE® E-7, 8

SPLIT SYSTEM 14 S.E.E.R. SWEAT FIT E-1,9,10

I

INSULATION AND COIL SHELF PACKAGE E-18

INTERNAL EXTENSIONS E-28

L

LIQUID-TIGHT CONDUIT E-43

LIQUID-TIGHT CONDUIT KIT E-37

LOUVERED GRILLE E-5,15

M

METAL FLASHING E-46

METAL WYE E-26

P

PIPE HANGER STRAP

GALVANIZED E-26,40

PLASTIC E-26,23,25

R

REDUCER INCREASER E-26

REFRIGERANT LINE SETS E-7

REGISTER COLLARS E-45

REMOVABLE CROWN ASSEMBLY E-28

RETURN AIR KIT W/GRILLE E-25

ROOF FLASHING KIT E-41
ROOF JACK CLOSEOFF E-41
ROOF JACKS E-27
ROOF JACK SEALANT E-28

S

SUPPLY / RETURN ACCESSORY KIT E-25

T

THERMOSTAT

COOL ONLY THERMOSTAT E-17, 47, 48, 49
DIGITAL NON PROG. T-STAT 1H/1C E-17, 47, 48, 49
DIGITAL NON PROG. T-STAT 2H/1 E-17, 47, 48, 49
DIGITAL PROG. T-STAT 1H/1C E-17, 47, 48, 49
DIGITAL PROG. T-STAT 2H/1C E-17, 47, 48, 49
DIGITAL PROG. T-STAT MULTIFUNCTION E-17, 47, 48, 49
HEAT/COOL THERMOSTAT E-17, 47, 48, 49
HEAT/COOL THERMOSTAT 5 WIRE E-17, 47, 48, 49
HEAT ONLY THERMOSTAT E-17, 47, 48, 49
SINGLE OUTDOOR THERMOSTAT E-44
THERMOSTAT HEAT/COOL 4 WIRE E-17, 47, 48, 49

TIME DELAY RELAY E-1,9,10,37

U

UNIVERSAL THERMOCOUPLE KITS E-45



800.945.4440
www.stylecrestinc.com

PRODUCT CATALOG